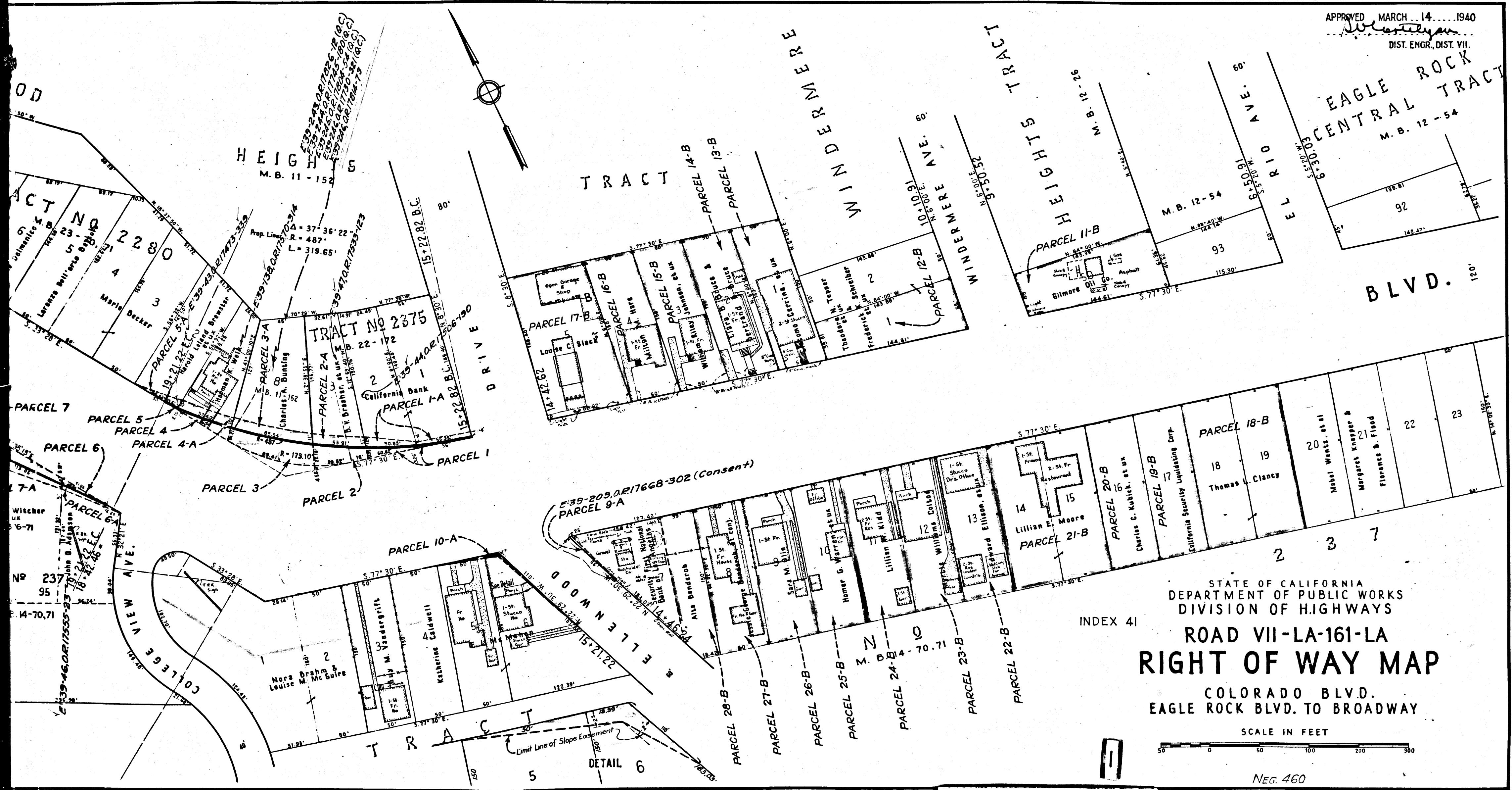


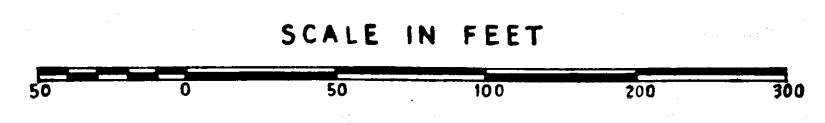
APPROVED MARCH 14, 1940  
W. Westley  
DIST. ENGR., DIST. VII.

EAGLE ROCK  
CENTRAL TRACT  
M. B. 12-54



STATE OF CALIFORNIA  
DEPARTMENT OF PUBLIC WORKS  
DIVISION OF HIGHWAYS  
ROAD VII-LA-161-LA  
**RIGHT OF WAY MAP**

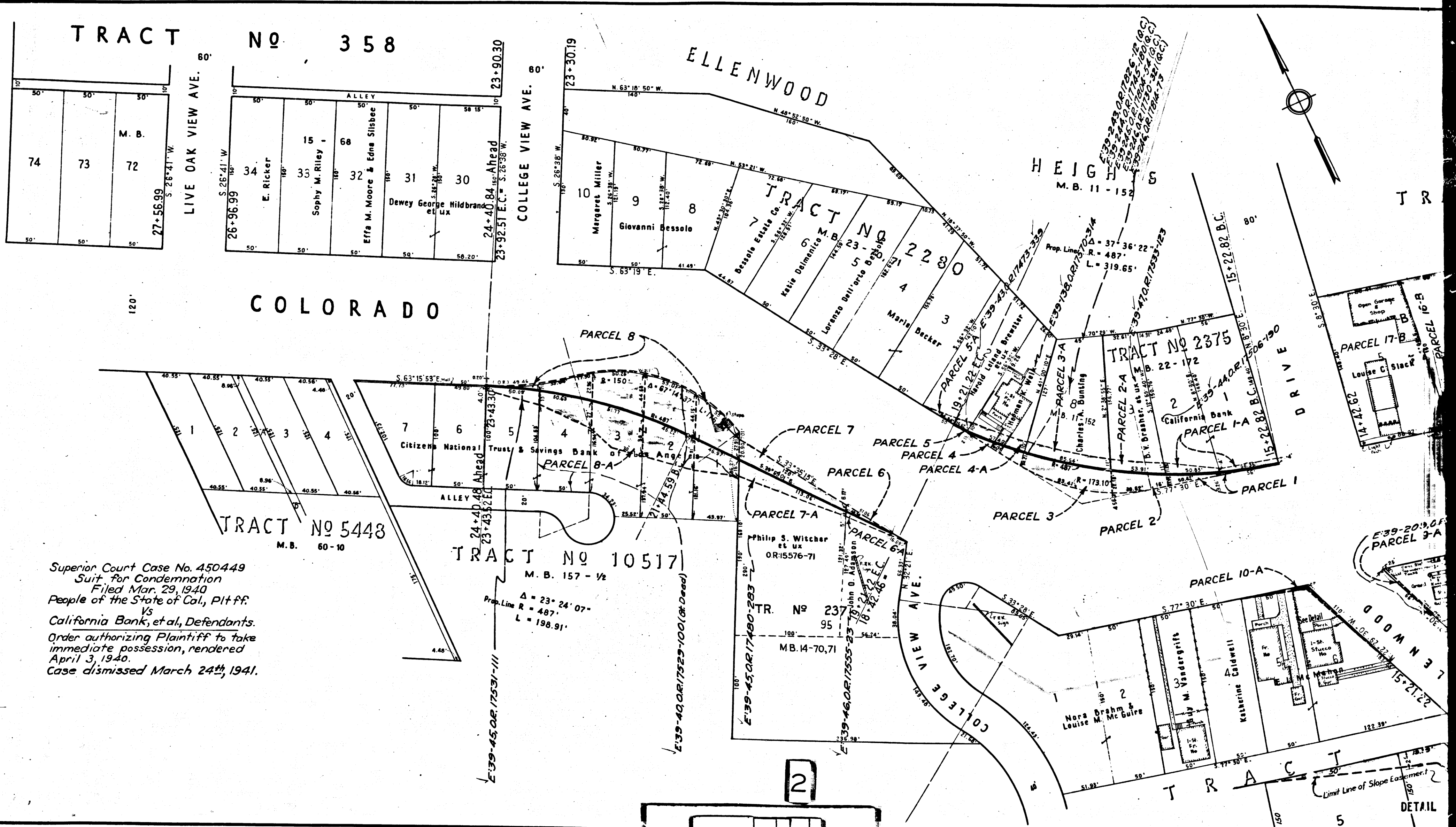
COLORADO BLVD.  
EAGLE ROCK BLVD. TO BROADWAY



NEG. 460

INDEX 41

C.F. 21211-



Superior Court Case No. 450449  
 Suit for Condemnation  
 Filed Mar. 29, 1940  
 People of the State of Cal., Pltff.  
 Vs  
 California Bank, et al, Defendants.  
 Order authorizing Plaintiff to take  
 immediate possession, rendered  
 April 3, 1940.  
 Case dismissed March 24th, 1941.

2

C.F. 2121 -

5  
DETAIL