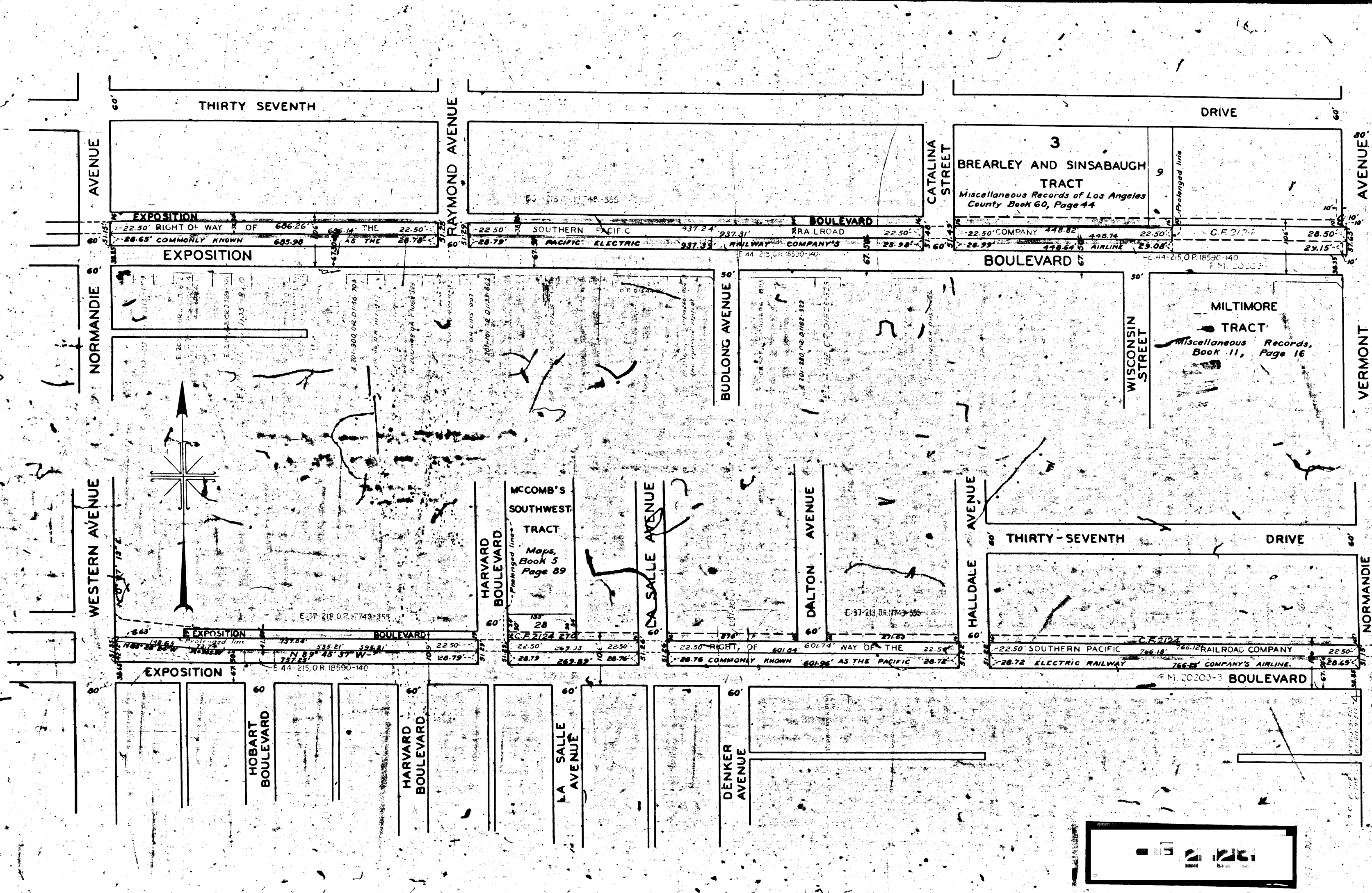


0633-A

0633-A



Superior Court Case No. 450820  
 Suit for Condemnation  
 Filed April 11, 1940  
 City of Los Angeles, Plaintiff  
 vs.  
 Southern Pacific RR. Co., et al., Def.  
 Dismissed Sept. 11, 1941

MAP  
 SHOWING LAND TO BE CONDEMNED  
 FOR THE  
 OPENING WIDENING EXTENDING AND LAYING OUT OF  
 THE NORTHERLY ROADWAY OF  
**EXPOSITION BOULEVARD**  
 BETWEEN  
 A POINT APPROXIMATELY 363 FEET WESTERLY OF  
 VERMONT AVENUE  
 AND  
 WESTERN AVENUE  
 IN THE CITY OF LOS ANGELES CALIFORNIA  
 IN ACCORDANCE WITH ORDINANCE NO. 82584.  
 LLOYD ALDRICH CITY ENGINEER MARCH 1940



Notes:  
 Land to be condemned shown colored red.  
 Dotted lines and dimensions show property holdings  
 in those cases where they differ from recorded subdivisions.

Right of Way No. 4261 Improvement of  
 Exposition Blvd - Vermont Avenue to  
 Western Avenue. Order No. 41504  
 Clerk's File 5256-33 Dist Map 5252-5254 Div. Index 181-182  
 Sowers/Storm Drains required 19 By  
 Date Traced/Swept Drawn Ch. Hoyt  
 Submitted April 4, 1940 Div. Dist. Eng. J. H. [unclear]  
 Submitted April 5, 1940 Deputy Eng. [unclear]  
 Approved April 5, 1940 City Eng. [unclear]

F.W.A. DOCKET 1644-F UNIT 39  
 A-6639