

V-003A

V-003A

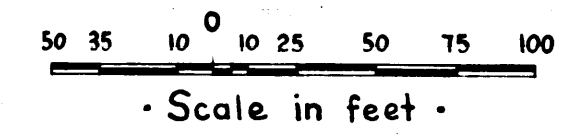
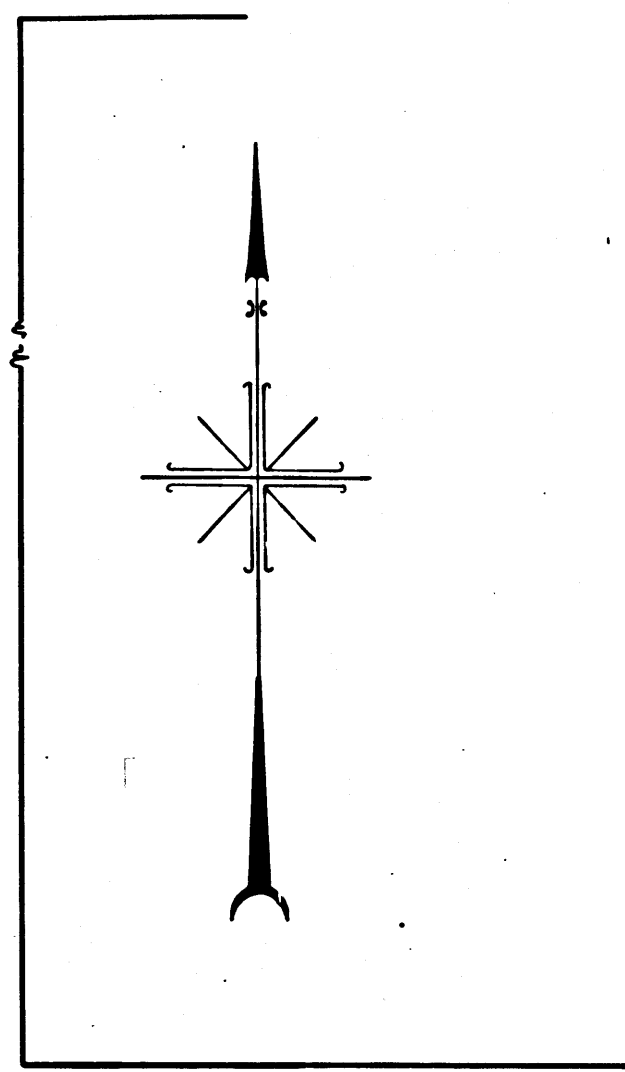
# MAP

SHOWING REAL PROPERTY TO BE CONDEMNED  
FOR PUBLIC STREET PURPOSES

ALSO  
SHOWING REAL PROPERTIES  
TO WHICH IT IS PROPOSED TO ASCERTAIN DAMAGES IF ANY  
WHICH WILL BE CAUSED BY THE PROPOSED IMPROVEMENT  
ALSO  
SHOWING EASEMENTS AND RIGHTS OF WAY TO BE CONDEMNED  
FOR THE EXTENSION OF SLOPES OF CUTS AND FILLS  
ALL FOR PUBLIC STREET PURPOSES  
IN CONNECTION WITH THE PROPOSED IMPROVEMENT OF

## OLYMPIC BOULEVARD

BETWEEN  
WESTERN AVENUE  
AND  
A POINT APPROXIMATELY 65 FEET SOUTHEASTERLY FROM  
GRAMERCY PLACE  
IN THE CITY OF LOS ANGELES, CALIFORNIA  
IN ACCORDANCE WITH ORDINANCE NO. 82110  
LLOYD ALDRICH-CITY ENGINEER JANUARY 1940



### NOTES:-

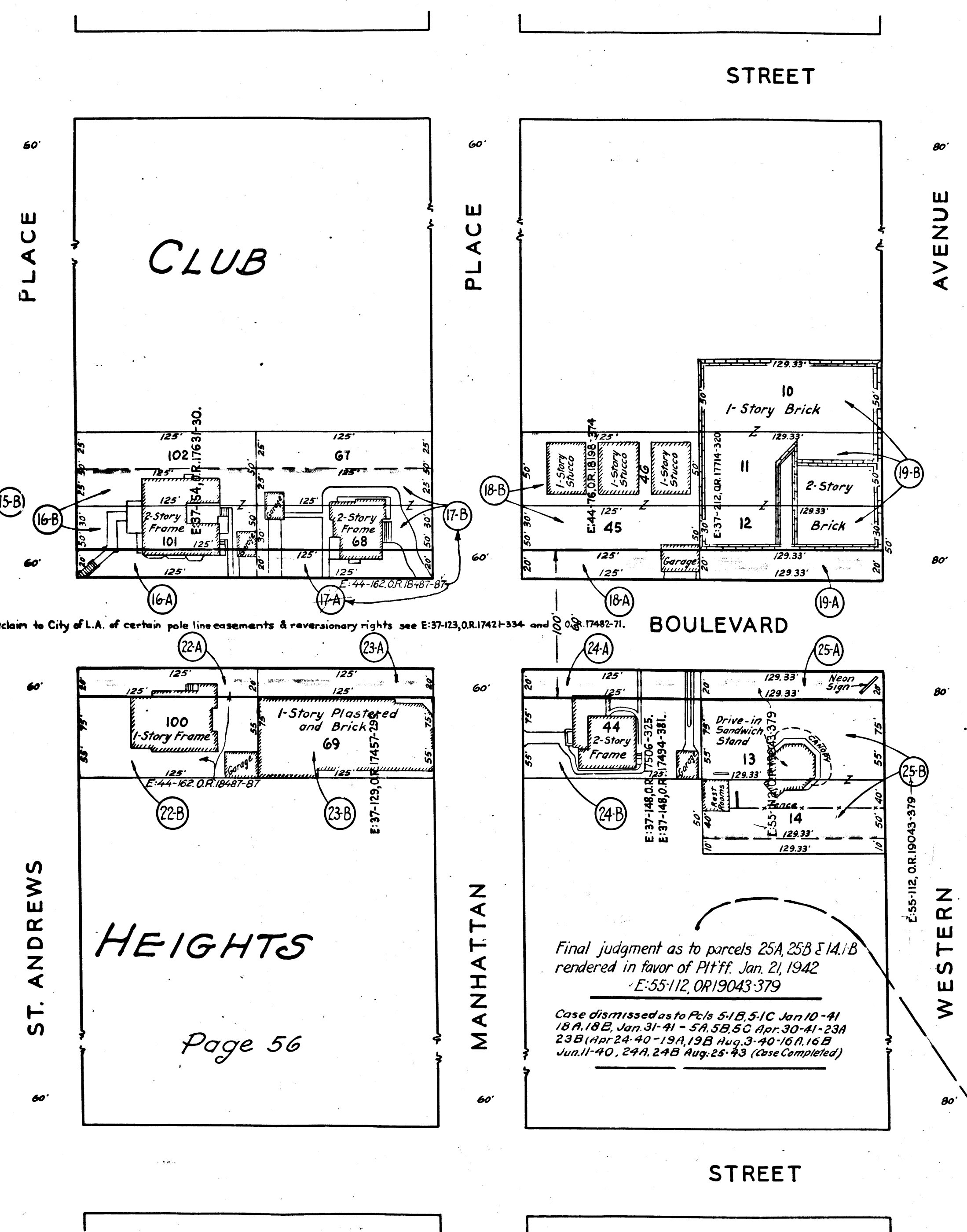
Land to be condemned for public street purposes shown colored red.  
Real properties to which it is proposed to ascertain damages if any  
shown outlined in yellow.  
Easements and rights of way to be condemned for the extension of  
slopes of cuts and fills shown thus .  
Figures and letters in circles indicate parcels as set forth in  
paragraph ... of the complaint.

### INDEX 5

Right of Way No.	Improvement of
OLYMPIC BOULEVARD WESTERN AVE TO	
ARLINGTON AVE.	Order No. 88539
Clerk's File 345-39	Dist. Map 7286 Div. Index 106
Sewers/Storm Drains	required 19 By
Calc.	Traced Drawn Kuhn Ckd Rowe
Submitted	19 Div. Dist. Engr.
Submitted March 1 1940	Deputy Engr. <i>Walter H. ...</i>
Approved	March 1, 1940 City Engineer <i>Lloyd Aldrich</i>

A-6634

C.F. 2125 -



Superior Court Case No. 450489  
Suit for Condemnation  
Filed Apr. 1, 1940  
City of Los Angeles, Plaintiff  
vs  
Blanche Allen Bagnall, et al., Def.  
Order authorizing Plaintiff to take  
immediate possession of parcels  
1A-B, 2A-B-C, 5A-B-C, 5B1-C1,  
10A-B-C, 12A-B-C, 14A-B-C, 15A-B-C,  
20A-B-C, 21A-B-C, rendered Apr. 5,  
1940.  
Parcels 10A, B, C dismissed May 14, 1940.  
" 12A, B, C " May 3, 1940.  
" 14A, B, C " "  
" 15A, B, C " "  
" 20A, B, C " "  
" 21A, B, C " "  
Int. judg. as to parcels 1A and 1B, ren-  
dered Sept. 25, 1940. J.B. 1100-180.  
Int. judg. as to parcels 2A, 2B and 2C,  
rendered Oct. 9, 1940. J.B. 1103-170.  
Int. judg. as to parcels 22A and 22B,  
rendered Mar. 14, 1941. J.B. 1142-218.  
Int. judg. as to parcels 17A and 17B,  
rendered Apr. 15, 1941. J.B. 1148-295.  
Final Judgement in favor of P'tff as per  
parcels Nos. 1-A, 1-B, 2-A, 2-B, 2-C, 17-A,  
17-B, 22-A, 22-B, rendered May 16, 1941

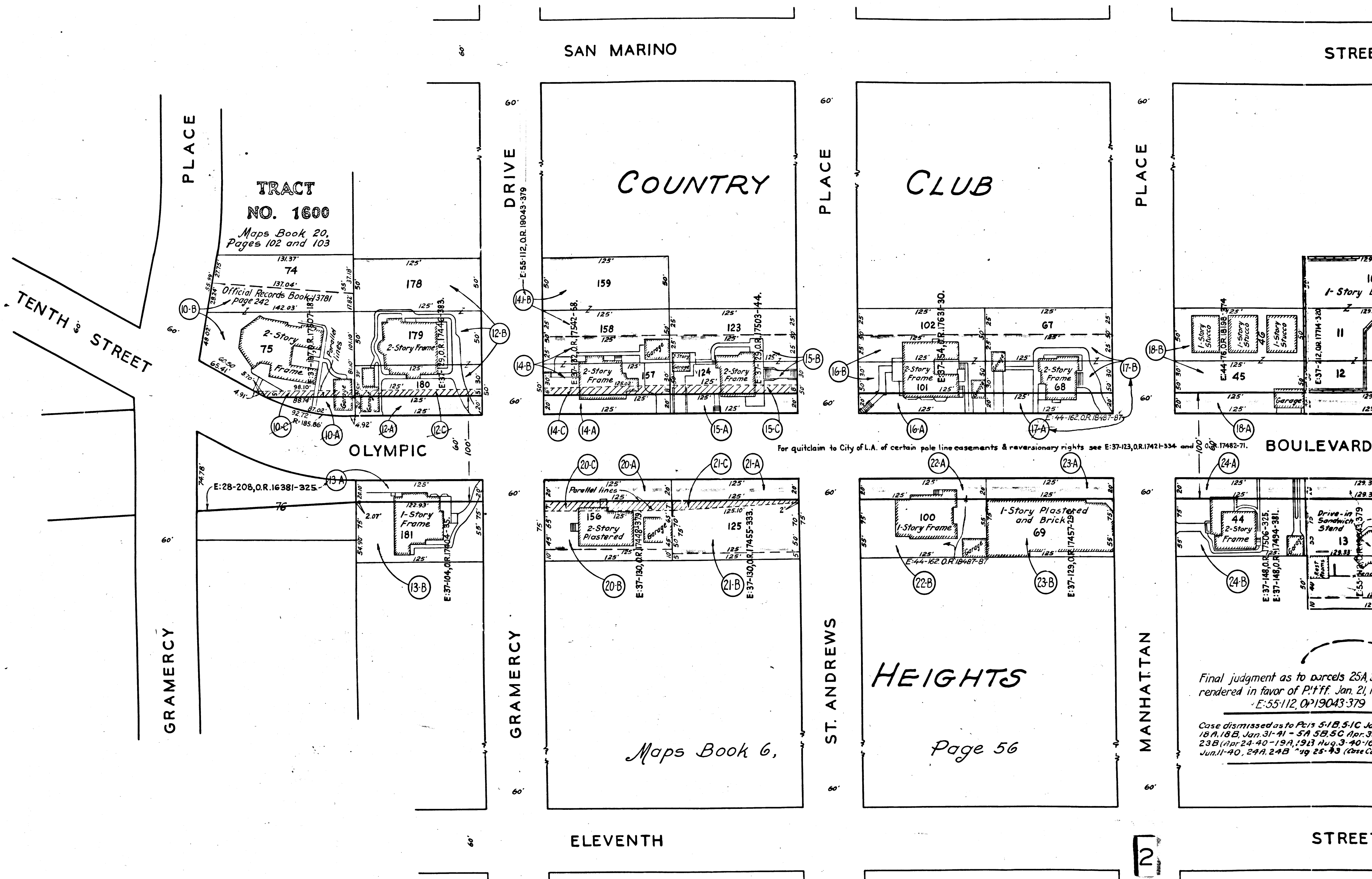
Final judgment as to parcels 25A, 25B & 14, 1B  
rendered in favor of P'tff. Jan. 21, 1942  
E:55-112, OR19043-379

Case dismissed as to P'cls 5-1B, 5-1C Jan 10-41  
18A, 18B, Jan 31-41 - 5A, 5B, 5C Apr. 30-41-23A  
23B (Apr. 24-40-19A, 19B Aug. 3-40-16A, 16B  
Jun. 11-40, 24A, 24B Aug. 25-43 (Case Completed)

For quitclaim to City of L.A. of certain pole line easements & reversionary rights see E:37-123, O.R. 17421-334 and E:55-112, O.R. 17482-71.

V-0034

4E00-A



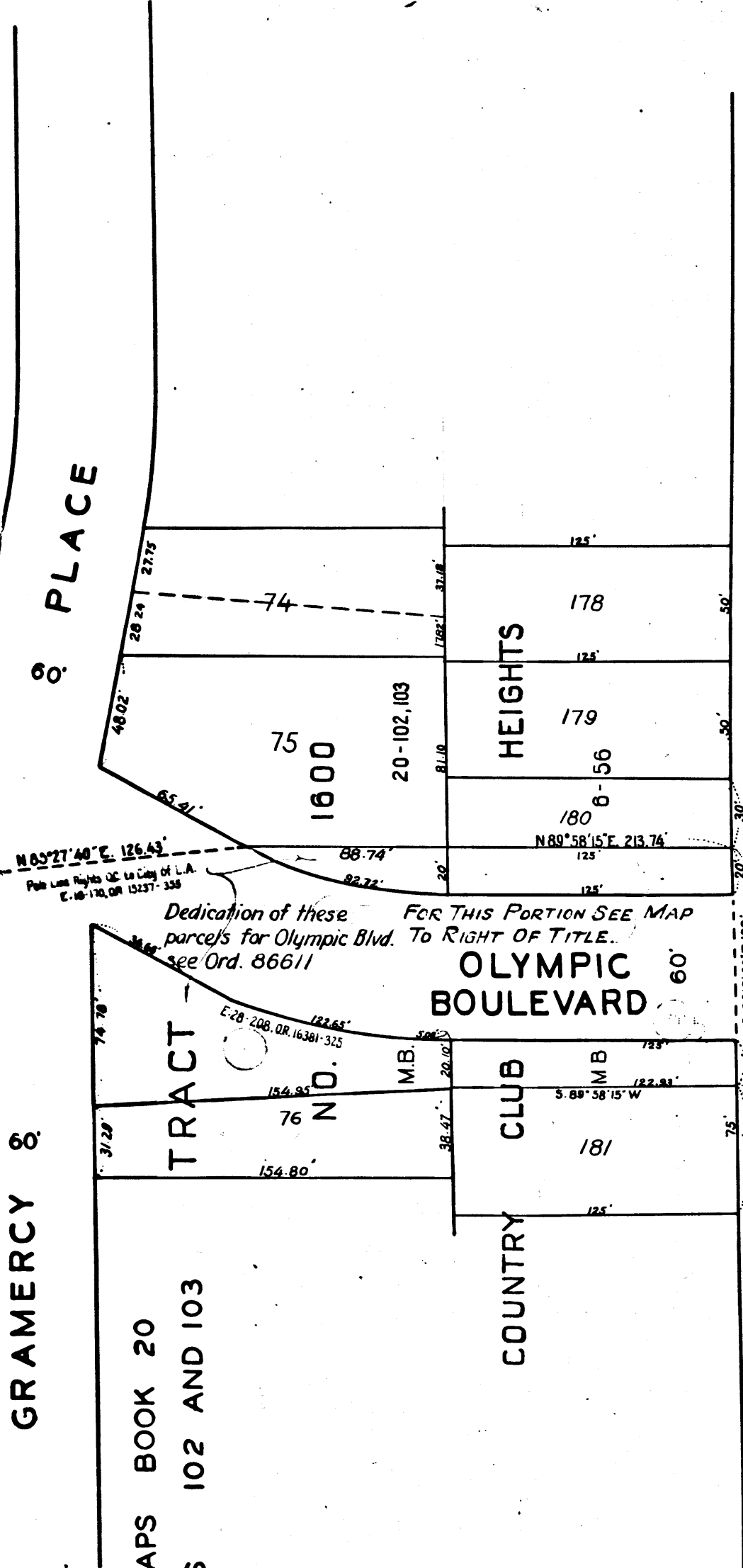
Final judgment as to parcels 25A, 25B rendered in favor of P'tff. Jan. 21, 1919. E:55-112, O.P. 19043-379. Case dismissed as to P't's 5-1B, 5-1C Jan. 18 A, 18 B, Jan. 31-41 - 5A 5B, 5C Apr. 30-23 B (Apr. 24-40-19A, 19B Aug. 3-40-16 A) Jun. 11-40, 24A, 24B Aug. 25-43 (Case Com...

C.F. 2125-

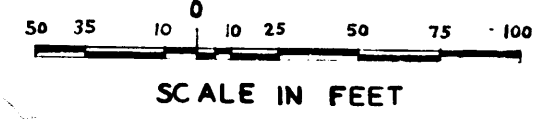
NO. 1600

GRAMERCY 60'

MAPS BOOK 20  
PAGES 102 AND 103



**MAP**  
 SHOWING REAL PROPERTY TO BE CONDEMNED  
 FOR PUBLIC STREET PURPOSES  
 ALSO  
 SHOWING REAL PROPERTIES  
 TO WHICH IT IS PROPOSED TO ASCERTAIN DAMAGES IF ANY  
 WHICH WILL BE CAUSED BY THE PROPOSED IMPROVEMENT  
 ALSO  
 SHOWING EASEMENTS AND RIGHTS OF WAY TO BE CONDEMNED  
 FOR THE EXTENSION OF SLOPES OF FILLS AND CUTS  
**ALL FOR PUBLIC STREET PURPOSES**  
 IN CONNECTION WITH THE PROPOSED IMPROVEMENT OF  
**OLYMPIC BOULEVARD**  
 BETWEEN GRAMERCY PLACE AND A POINT APPROXIMATELY  
 120 FEET WESTERLY OF ARLINGTON AVENUE  
 IN THE CITY OF LOS ANGELES CALIFORNIA  
 IN ACCORDANCE WITH ORDINANCE NO. 82060  
 LLOYD ALDRICH-CITY ENGINEER    NOVEMBER 1939



**NOTES:-**

LAND TO BE CONDEMNED FOR PUBLIC STREET PURPOSES SHOWN COLORED RED  
 REAL PROPERTIES TO WHICH IT IS PROPOSED TO ASCERTAIN DAMAGES IF ANY  
 SHOWN OUTLINED IN YELLOW  
 EASEMENTS AND RIGHTS OF WAY TO BE CONDEMNED FOR THE EXTENSION OF  
 SLOPES OF FILLS AND CUTS SHOWN THUS   
 FIGURES AND LETTERS IN CIRCLES INDICATE PARCELS AS SET FORTH IN  
 PARAGRAPH 11 OF THE COMPLAINT

Right of Way No.	Improvement of
OLYMPIC BOULEVARD - WESTERN AVE.	TO ARLINGTON AVE.
Clerk's File 345-39	Dist Map 7286
Order No. 88539	Div. index 106
Sewers/Storm Drains required	By
Calc. Snelson	Traced Kuhn
Drawn Kuhn	Chd. Snelson
Submitted 1939	Div. Dist. Eng.
Submitted March 1, 1940	Deputy Engr.
Approved	City Engineer

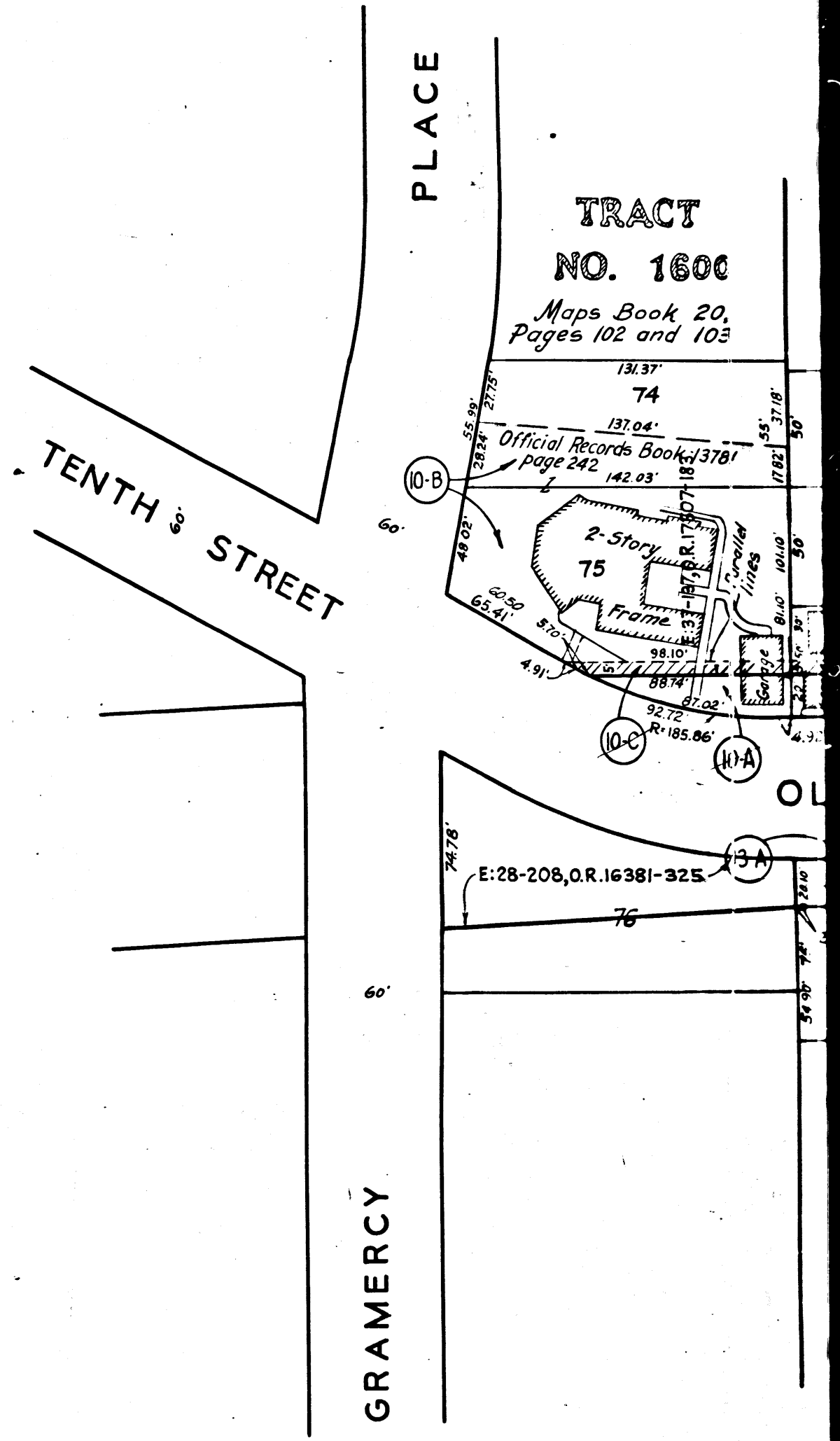
A-6635

2300-A

A-6632

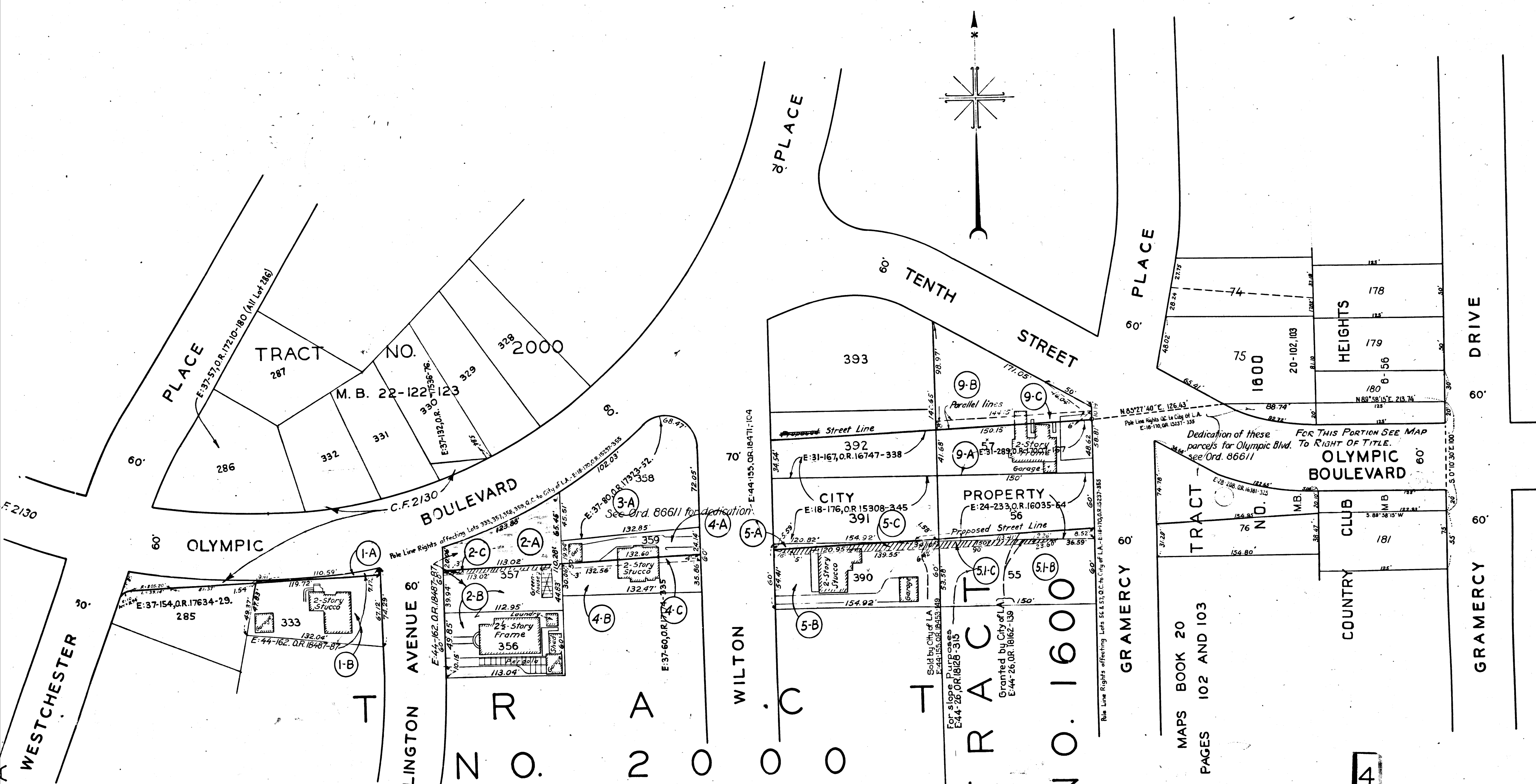
4300-A

4300-A



3

C.F. 2125-



ARLINGTON AVENUE 60'

MAPS BOOK 22

PAGES 122 AND 123

GRAMERCY PLACE 60'

MAPS BOOK 20  
PAGES 102 AND 103

C.F. 2125-

4

Dedication of these parcels for Olympic Blvd. To RIGHT OF TITLE. see Ord. 86611

FOR THIS PORTION SEE MAP

OLYMPIC BOULEVARD

TRACT NO. 1600

See Ord. 86611 for dedication

Sold by City of LA  
E:44-155, O.R. 16451-149

Granted by City of LA  
E:44-26, O.R. 16162-139

Rule Line Rights affecting Lots 56 & 57, O.C. to City of L.A. E:44-170, O.R. 16237-385

60'

GRAMERCY 60'

60' PLACE

60' TENTH STREET

8 PLACE

60' DRIVE

GRAMERCY 60'

HEIGHTS

COUNTRY CLUB

TRACT NO.

OLYMPIC

WESTCHESTER

F.2130

30'

60'

60'

60'

60'

60'

60'

60'

60'

60'

60'

60'

60'

60'

60'

60'

60'

60'

60'

60'

60'

60'

60'

60'

60'

60'

60'

60'

60'

60'

60'

60'

60'

60'

60'

60'

60'

60'

60'

60'

60'

60'

60'

60'

60'

60'

60'

60'

60'

60'

60'

60'

60'

60'

60'

60'

60'

60'

60'

60'

60'

60'

60'

60'

60'

60'

60'

60'

60'

60'

60'

60'

60'

60'

60'

60'

60'

60'

60'

60'

60'

60'

60'

60'

60'

60'

60'

60'

60'

60'

60'

60'

60'

60'

60'

60'

60'

60'

60'

60'

60'

60'

60'

60'

60'

60'

60'

60'

60'

60'

60'

60'

60'

60'

60'

60'

60'

60'

60'

60'

60'

60'

60'

60'

60'

60'

60'

60'

60'

60'

60'

60'

60'

60'

60'

60'

60'

60'

60'

60'

60'

60'

60'

60'

60'

60'

60'

60'

60'

60'

60'

60'

60'

60'

60'

60'

60'

60'

60'

60'

60'

60'

60'

60'

60'

60'

60'

60'

60'

60'

60'

60'

60'

60'

60'

60'

60'

60'

60'

60'

60'

60'

60'

60'

60'

60'

60'

60'

60'

60'

60'

60'

60'

60'

60'

60'

60'