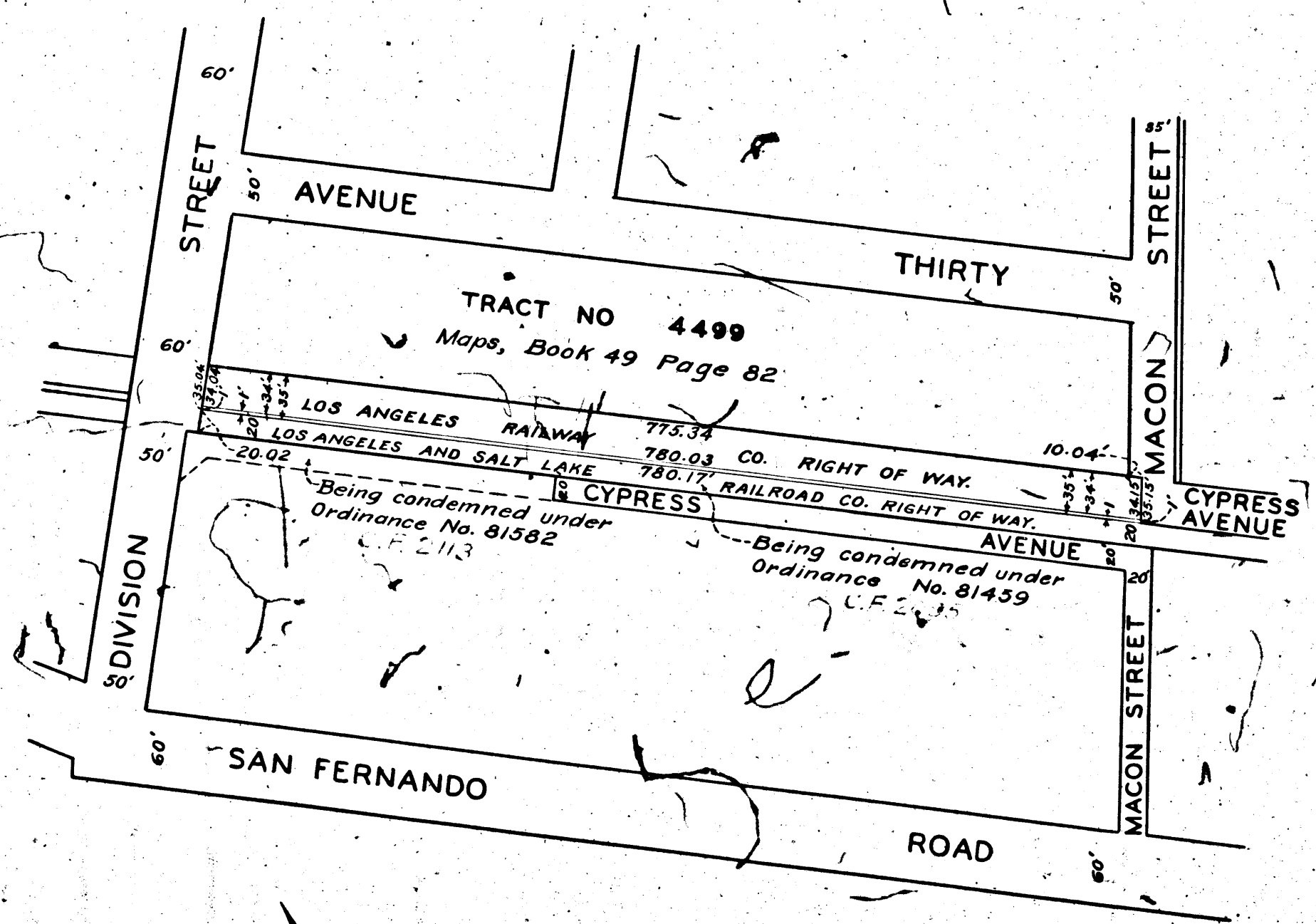


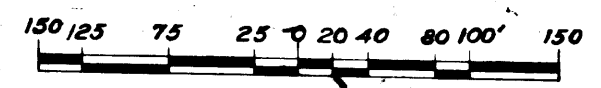
8E00-A

8E00-A

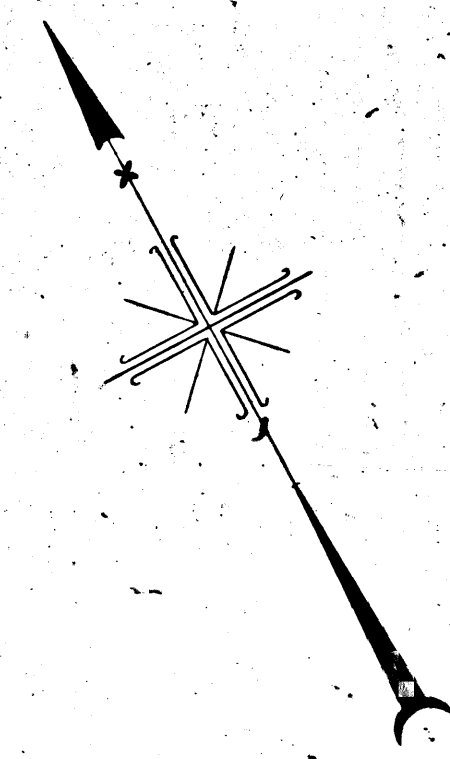
BEING TO CITY ENGINEER
CITY OF LOS ANGELES
PROPERTY OF THE



MAP
 SHOWING LAND TO BE CONDEMNED
 FOR PUBLIC STREET PURPOSES
 ALONG THE SOUTHWESTERLY LINE OF THE LOS ANGELES
 RAILWAY CORPORATION'S RIGHT OF WAY
 BETWEEN
 MACON STREET
 AND
 DIVISION STREET
 IN THE CITY OF LOS ANGELES CALIFORNIA
 IN ACCORDANCE WITH ORDINANCE NO. 82593.
 LLOYD ALDRICH-CITY ENGINEER APRIL 1940.



NOTE:
 LAND TO BE CONDEMNED FOR PUBLIC STREET PURPOSES SHOWN COLORED RED.



Superior Court Case No. 451032
 Suit for Condemnation
 Filed Apr. 18, 1940
 City of Los Angeles, Plaintiff
 vs
 Emil Deuillard, et al., Def.
 Final judgment in favor of Pltff as
 per map rendered July 17, 1942
 E-55-263 OR 19502-24.

INDEX 41

Right of Way No.	Improvement of
Cypress Avenue from Alice Street to Verdugo Road	Order No. 51016
Clerk's File	Dist. Map 4826 Div. Index 384
Sewers/Storm Drains	required 19 By
Calc.	Traced Sweet Drawn Cad. Hort.
Submitted April 4, 1940	Div. Dist. Engr. [Signature]
Submitted April 5, 1940	Deputy Engr. [Signature]
Approved April 5, 1940	City Engineer Lloyd Aldrich

A-6638

8E00-A

8E00-A