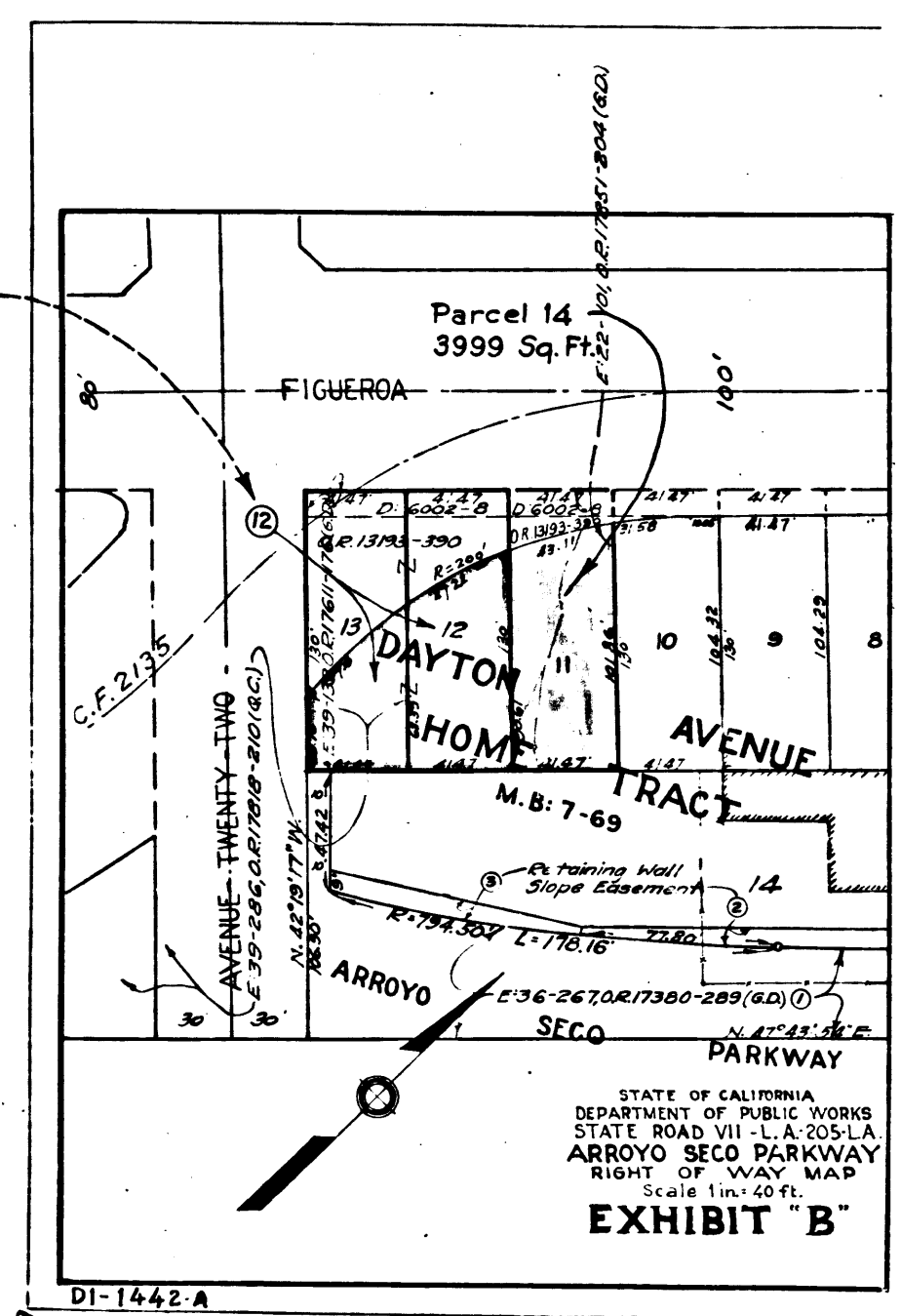
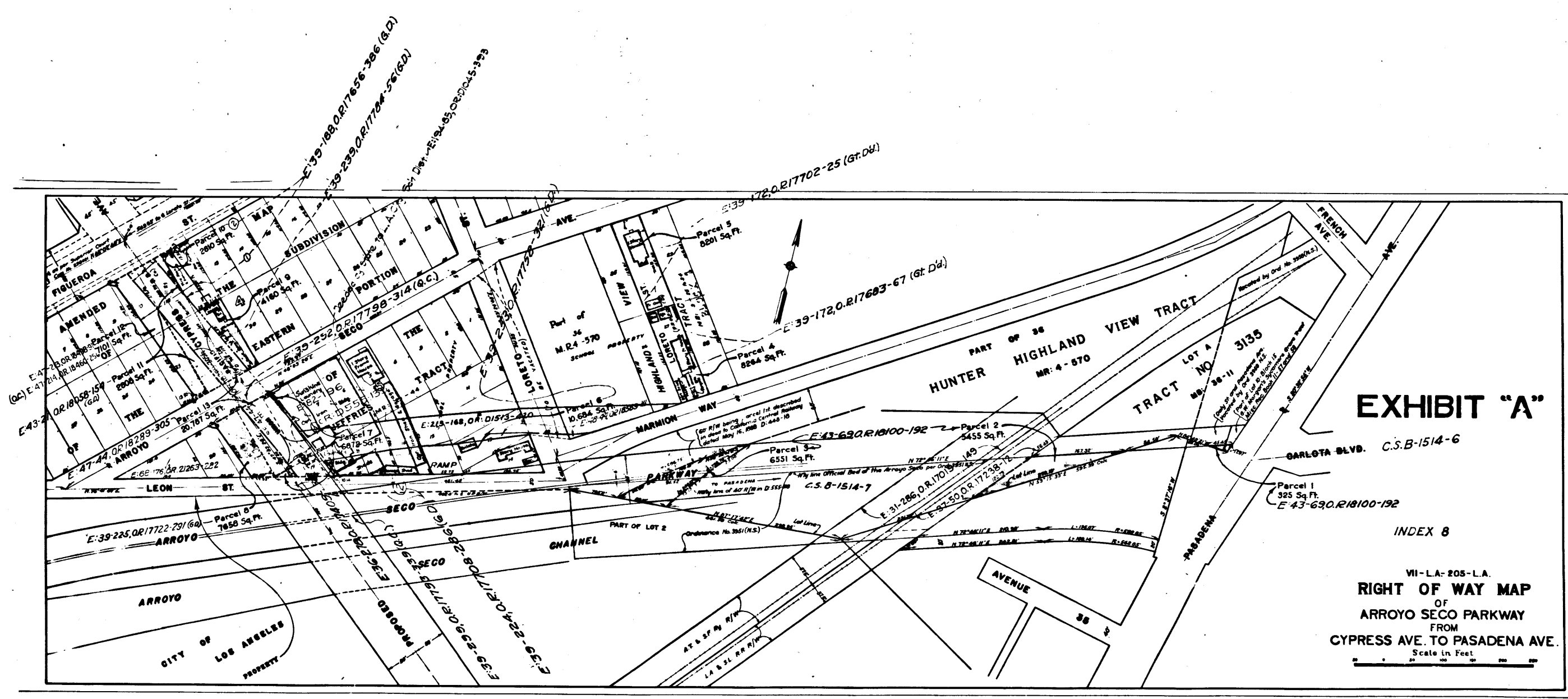


Superior Court Case No. 452518
 Suit for Condemnation
 Filed May 23, 1940
 People of the State of Cal., Pltff.
 vs
 Philip M. Bechtolt, et al., Def.
 Suit covers parcel 12 as shown in
 brown on this map and parcels 1, 2,
 3, 4, 5 and 11 on C.S.B-1514-6.
 Order of immediate possession
 rendered May 22, 1940.
 Case dismissed as to Parcel 12,
 November 12th, 1941.
 Case completed See C.S. B-1514-6



DI-1442-A



Superior Court Case No. 453601
 Suit for Condemnation
 Filed June 26, 1940
 People of the State of Cal., Pltff.
 vs
 The A.T. & S.F. Ry. Co., et al., Def.
 Order authorizing Plaintiff to
 take immediate possession, rendered
 June 26, 1940.
 Note: This suit does not cover parcel
 12 outlined in brown. See other end
 of this map.
 Case dismissed by Court as to all parcels
 1 to 14 inclusive June 18, 1943

C.F. 2132 -