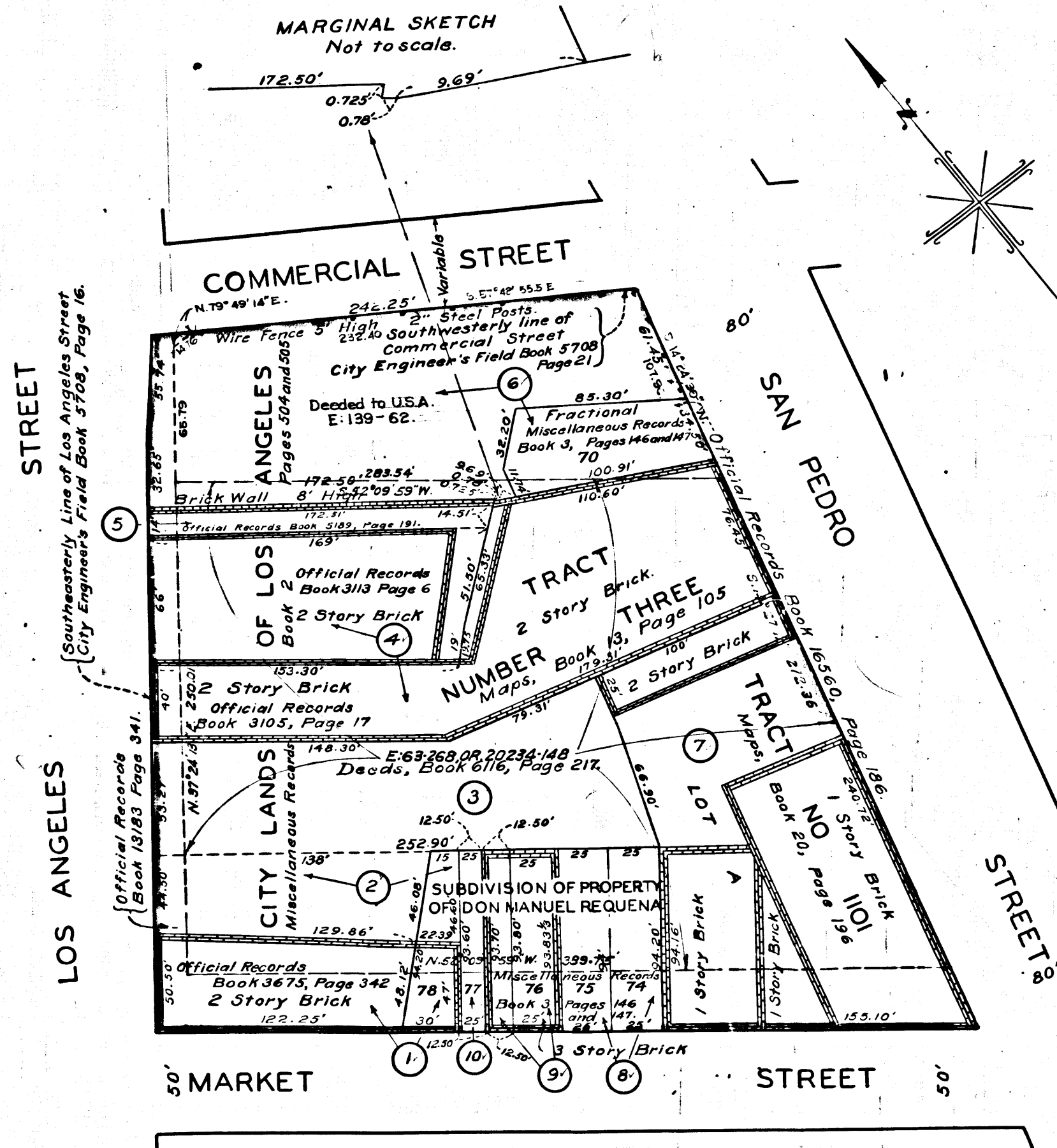


A-0003

A-0003



MAP
 SHOWING LAND TO BE CONDEMNED IN FEE
 FOR PUBLIC BUILDINGS AND GROUNDS
 LOCATED IN THE BLOCK BOUNDED BY
 SAN PEDRO STREET, MARKET STREET,
 LOS ANGELES STREET AND COMMERCIAL STREET.

IN THE CITY OF LOS ANGELES, CALIFORNIA.
 IN ACCORDANCE WITH ORDINANCE NO. 83261
 LLOYD ALDRICH-CITY ENGINEER AUGUST 1940.

SCALE 1" = 50'

NOTES

EXTERIOR BOUNDARY OF LAND TO BE CONDEMNED IN FEE INDICATED BY RED TINT.
 DOTTED LINES AND DIMENSIONS SHOW PROPERTY HOLDINGS IN THOSE CASES WHERE THEY DIFFER FROM RECORDED SUBDIVISIONS.
 FIGURES IN CIRCLES INDICATE PARCELS AS SET FORTH IN PARAGRAPH IX OF THE COMPLAINT.

Superior Court Case No. 455664
 Suit for Condemnation
 Filed Sept. 4, 1940
 City of Los Angeles, Plaintiff
 Vs
 James H. Pope, et al, Defendants
 Final judgment in favor of Plff. as per map
 rendered December 1st 1941
 E: 55-51, O.R. 18939-285

INDEX 2

Right of Way No.	20131	Improvement of
UNITED STATES CUSTOMS BUILDING SITE		
Clerk's File	2586-40	Dist. Map
Sewers/Storm Drains	required	19
Calc.	Tracad Sweet	Drawn
Submitted	August 21	1940
Approved		19

A-0003

A-0003

A-6663
 NEG. 471

C.F. 2137-