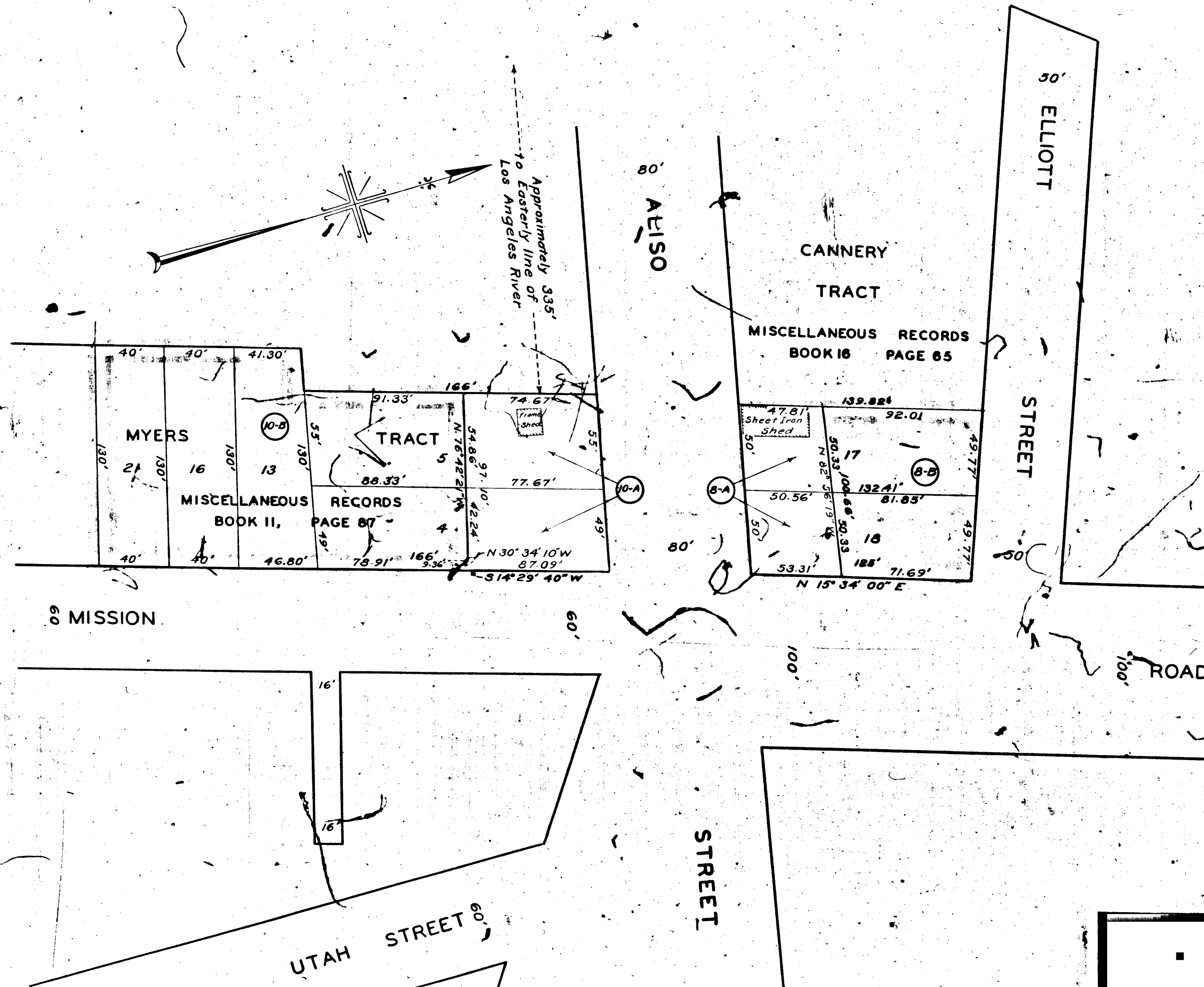
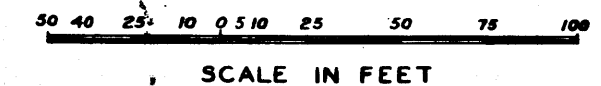


2000-A

Superior Court Case No. 456009  
 Suit for Condemnation  
 Filed Sept. 16, 1940  
 City of Los Angeles, Plaintiff  
 vs.  
 Alfred Ribail, et al., Defendants.  
 Order authorizing Plaintiff to  
 take immediate possession, rendered  
 at Sept. 27, 1940.  
 Final judgment as to parcels 8A, 8B,  
 12, 13, 14, 15 rendered in favor of Plaintiff  
 at 10, 13, 14.  
 50-34 OR 13000377



**MAP**  
 SHOWING REAL PROPERTY TO BE CONDEMNED  
 FOR PUBLIC STREET PURPOSES  
 FOR THE WIDENING AND LAYING OUT OF  
**ALISO STREET**  
 BETWEEN MISSION ROAD AND THE  
 EASTERLY LINE OF THE LOS ANGELES RIVER  
 IN THE CITY OF LOS ANGELES, CALIFORNIA  
 IN ACCORDANCE WITH ORDINANCE NO. 83266  
 LLOYD ALDRICH-CITY ENGINEER      JULY 1940



**NOTES:**  
 LAND TO BE CONDEMNED FOR PUBLIC STREET PURPOSES SHOWN COLORED RED.  
 REAL PROPERTIES TO WHICH IT IS PROPOSED TO ASCERTAIN DAMAGES IF ANY  
 SHOWN OUTLINED IN YELLOW.  
 FIGURES AND LETTERS IN CIRCLES INDICATE PARCELS AS SET FORTH IN PARAGRAPH  
 X OF THE COMPLAINT.

Right of Way No. 4838	Improvement of
ALISO STREET VIADUCT OVER	
LOS ANGELES RIVER Order No. 40251	
Clark's File	Dist. Map 5514 Div. Index 81
Sewers/Storm Drains	required 19 By
Calc.	Traced SWEET Drawn Cld. Hoyt
Submitted	July 31, 1940 Div. Dist. Engr. E.W. [Signature]
Submitted	August 1, 1940 Deputy Engr. [Signature]
Approved	August 1, 1940 City Engineer [Signature]

A-6665

A-6665