

Superior Court Case No. 517333
 Suit for Condemnation
 Filed July 29, 1946
 State of California, Plaintiff,
 vs
 Max Gellerman, et al., Defendants.

Final Judgment in favor of Pltff. as to
 Parcel 1 rendered May 29, 1947
 E:81-13, OR 24708-51

Final Judgment in favor of Pltff. as to
 Parcel 1 rendered November 27, 1946
 E:77-168, OR 23915-341

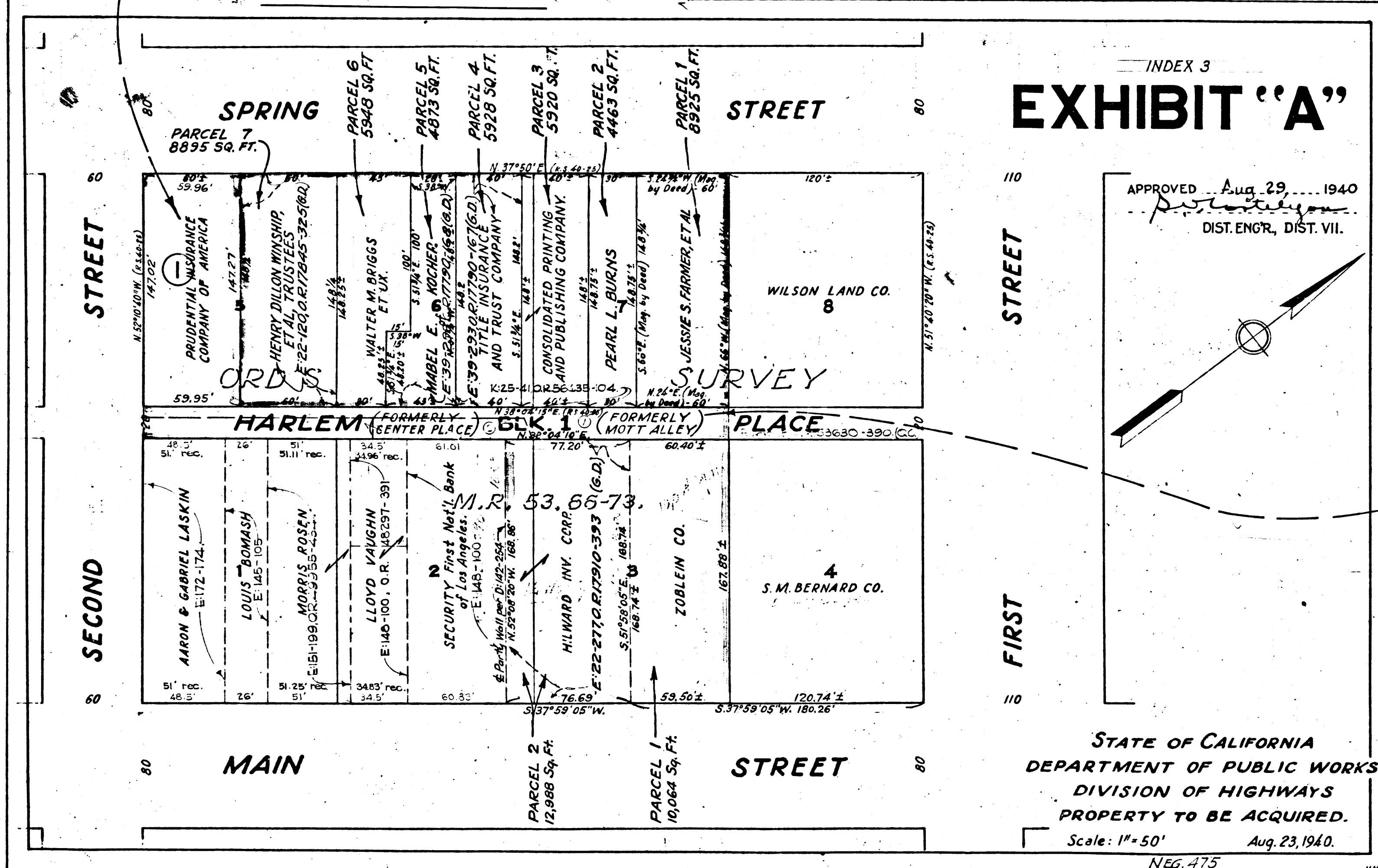


EXHIBIT "A"

APPROVED Aug 29, 1940
 DIST. ENGR., DIST. VII.

Superior Court Case No. 456028
 Suit for Condemnation
 Filed Sept. 17, 1940
 People of the State of Cal., Pltff.
 vs
 Jessie D. Farmer, et al., Def.
 Note:- Suit covers parcels 1, 2, 3, 6, 7
 outlined in red. 1, 2, 3, 6, 7
 Int. judg. as to parcels 1, 2, 3 and 6,
 rendered Apr. 10, 1941. J.B. 1147-242.
 Final Judgment in favor of Pltff. as to
 Parcels 1, 2, 3 & 6, rendered May 26, 1941
 E: 47-204, OR 18435-333
 Case dismissed as to Parcel 7 Jul. 12-41

Superior Court Case No. 651643
 Suit for Condemnation
 Filed Nov. 7, 1955
 State of California, Plaintiff
 vs
 City of Los Angeles, Defs.
 FOR CURRENT STATUS
 SEE INDIVIDUAL PARCELS

Superior Court Case No. 457807
 Suit for Condemnation
 Filed Nov. 14, 1940
 People of the State of Cal., Pltff.
 vs
 Zobelein Company, et al., Defendants.
 Note:- Suit covers parcels 1 and 2
 outlined in violet.
 Final Judgment in favor of Pltff. as to Parcel 1
 rendered Sept. 11, 1941
 E: 52-6, OR 18756-169
 Case dismissed as to Parcel 2 Oct. 1-1941

STATE OF CALIFORNIA
 DEPARTMENT OF PUBLIC WORKS
 DIVISION OF HIGHWAYS
 PROPERTY TO BE ACQUIRED.
 Scale: 1" = 50' Aug. 23, 1940.

NEG. 475

C.F. 2139 -