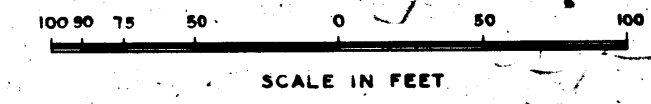


MAP
 SHOWING LAND TO BE CONDEMNED IN FEE
 FOR PUBLIC BUILDINGS AND GROUNDS
 LYING BETWEEN AVENUE TWENTY-ONE AND AVENUE TWENTY-SIX
 AND NORTHWESTERLY OF THE ATCHISON TOPEKA AND
 SANTA FE RAILWAY COMPANY'S RIGHT-OF-WAY
 IN THE
CITY OF LOS ANGELES CALIFORNIA
 IN ACCORDANCE WITH ORDINANCE NO. 83299
 LLOYD ALDRICH - CITY ENGINEER SEPTEMBER 1940



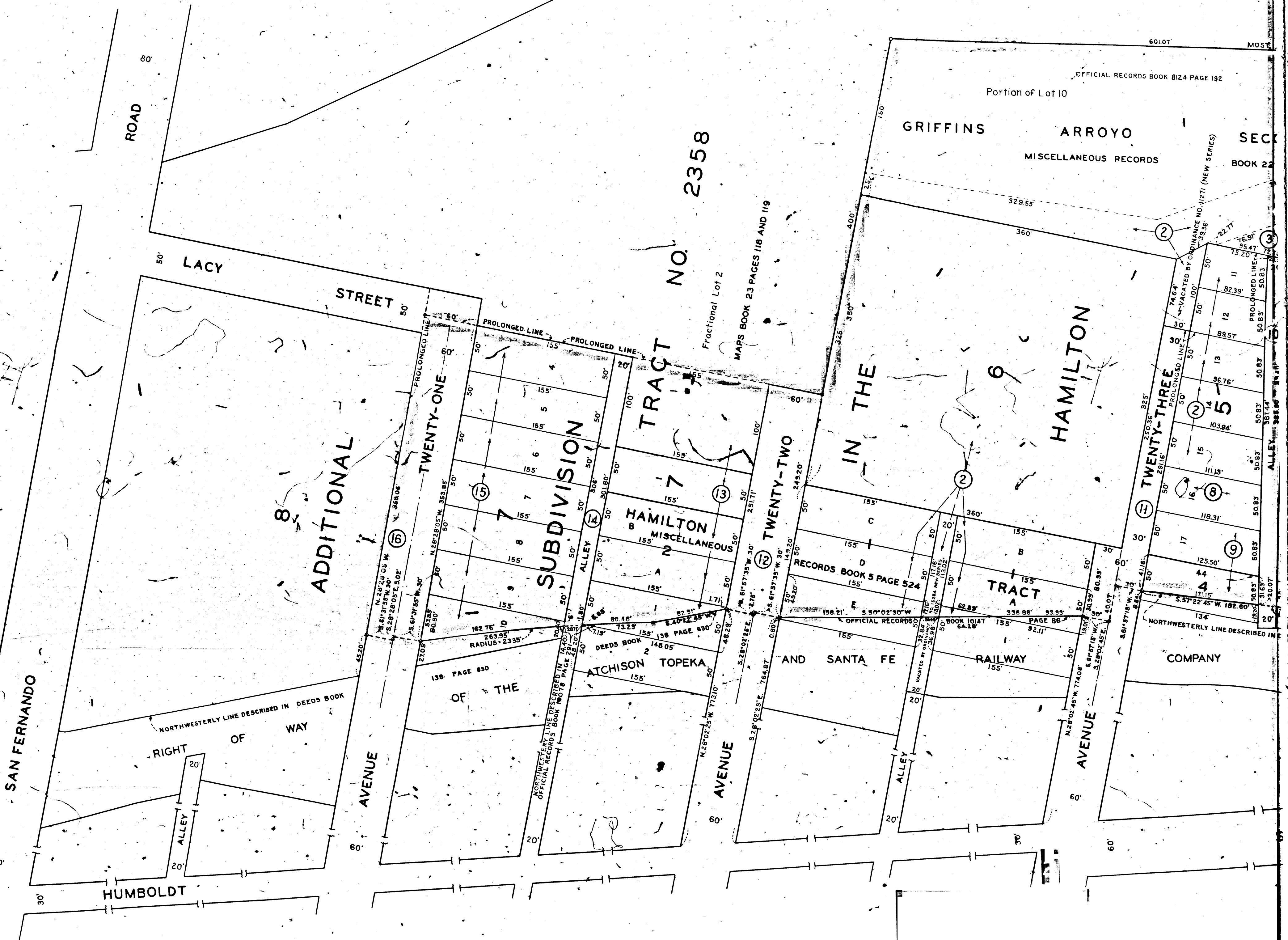
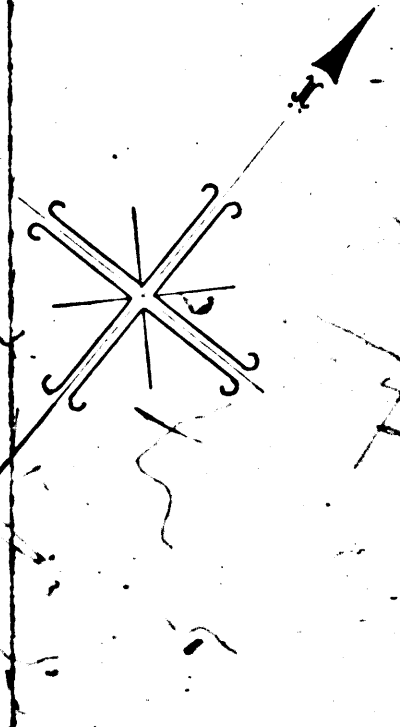
NOTES
 EXTERIOR BOUNDARIES OF LAND TO BE CONDEMNED IN FEE FOR PUBLIC BUILDINGS AND GROUNDS SHOWN OUTLINED IN RED
 DOTTED LINES AND DIMENSIONS SHOW PROPERTY HOLDINGS IN THOSE CASES WHERE THEY DIFFER FROM RECORDED SUBDIVISIONS
 FIGURES IN CIRCLES INDICATE THE PARCEL NUMBERS AS SET FORTH IN PARAGRAPH XI OF THE COMPLAINT

*Superior Court Case No. 457813
 Suit for Condemnation
 Filed Nov. 14, 1940
 City of Los Angeles, Plaintiff
 vs
 H.H. Cockrum, et al., Defendants*

INDEX 8

Right of Way No.	HAWLEY GRAVEL PIT (IN ARROYO SECO BETWEEN AVE. 21 AND AVE. 26)		
Clerk's File	1487-40	Dist. Map	5526
Order No.	31076		
Div. Index	16		
Sewers/Storm Drains	required	By	19
Calc.	SNELSON	Traced	SNELSON
Drawn	Ckd. MUELLER		
Submitted	Oct 7 1940	Div. Dist. Engr.	[Signature]
Approved	Oct 2 1940	City Engineer	[Signature]

AL-828



SAN FERNANDO AVENUE

HUMBOLDT AVENUE

LACY STREET

AVENUE

AVENUE

AVENUE

ADDITIONAL SUBDIVISION

SUBDIVISION

TRACT NO. 2358

IN THE

HAMILTON

GRIFFINS

ARROYO

SEC

MISCELLANEOUS RECORDS

BOOK 2

HAMILTON B MISCELLANEOUS

TRACT A

TWENTY-ONE

TWENTY-TWO

TWENTY-THREE

RECORDS BOOK 5 PAGE 524

AND SANTA FE RAILWAY

COMPANY

OFFICIAL RECORDS BOOK 8124 PAGE 192

601.07 MOST

DEEDS BOOK 2 PAGE 630

OFFICIAL RECORDS BOOK NO 18 PAGE 242

DEEDS BOOK 2 PAGE 630

OFFICIAL RECORDS BOOK 10147 PAGE 86

OFFICIAL RECORDS BOOK 10147 PAGE 86

NORTHWESTERLY LINE DESCRIBED IN

ORDINANCE NO. 1271 (NEW SERIES)

Fractional Lot 2

MAPS BOOK 23 PAGES 118 AND 119

ROAD

80'

50'

STREET

PROLONGED LINE

PROLONGED LINE

PROLONGED LINE

PROLONGED LINE

400'

350'

329.55'

360'

22.71'

15.20'

82.39'

50.83'

50.83'

50.83'

50.83'

11

12

13

14

89.57'

56.76'

103.94'

50.83'

50.83'

50.83'

50.83'

50.83'

50.83'

50.83'

50.83'

50.83'

50.83'

50.83'

50.83'

50.83'

50.83'

50.83'

50.83'

50.83'

50.83'

50.83'

50.83'

50.83'

50.83'

50.83'

50.83'

50.83'

50.83'

50.83'

50.83'

50.83'

50.83'

50.83'

50.83'

50.83'

50.83'

50.83'

50.83'

50.83'

50.83'

50.83'

50.83'

50.83'

50.83'

50.83'

50.83'

50.83'

50.83'

50.83'

50.83'

50.83'

50.83'

50.83'

50.83'

50.83'

50.83'

50.83'

50.83'

50.83'

50.83'

50.83'

50.83'

50.83'

50.83'

50.83'

50.83'

50.83'

50.83'

50.83'

50.83'

50.83'

50.83'

50.83'

50.83'

50.83'

50.83'

50.83'

50.83'

50.83'

50.83'

50.83'

50.83'

50.83'

50.83'

50.83'

50.83'

50.83'

50.83'

50.83'

50.83'

50.83'

50.83'

50.83'

50.83'

50.83'

50.83'

50.83'

50.83'

50.83'

50.83'

50.83'

50.83'

50.83'

50.83'

50.83'

50.83'

50.83'

50.83'

50.83'

50.83'

50.83'

50.83'

50.83'

50.83'

50.83'

50.83'

50.83'

50.83'

50.83'

50.83'

50.83'

50.83'

50.83'

50.83'

50.83'

50.83'

50.83'

50.83'

50.83'

50.83'

50.83'

30'

20'

20'

60'

20'

60'

20'

60'

20'

20.00'

30'

20'

20'

60'

20'

60'

20'

60'

20'

20.00'

30'

20'

20'

60'

20'

60'

20'

60'

20'

20.00'

30'

20'

20'

60'

20'

60'

20'

60'

20'

20.00'

30'

20'

20'

60'

20'

60'

20'

60'

20'

20.00'

30'

20'

20'

60'

20'

60'

20'

60'

20'

20.00'