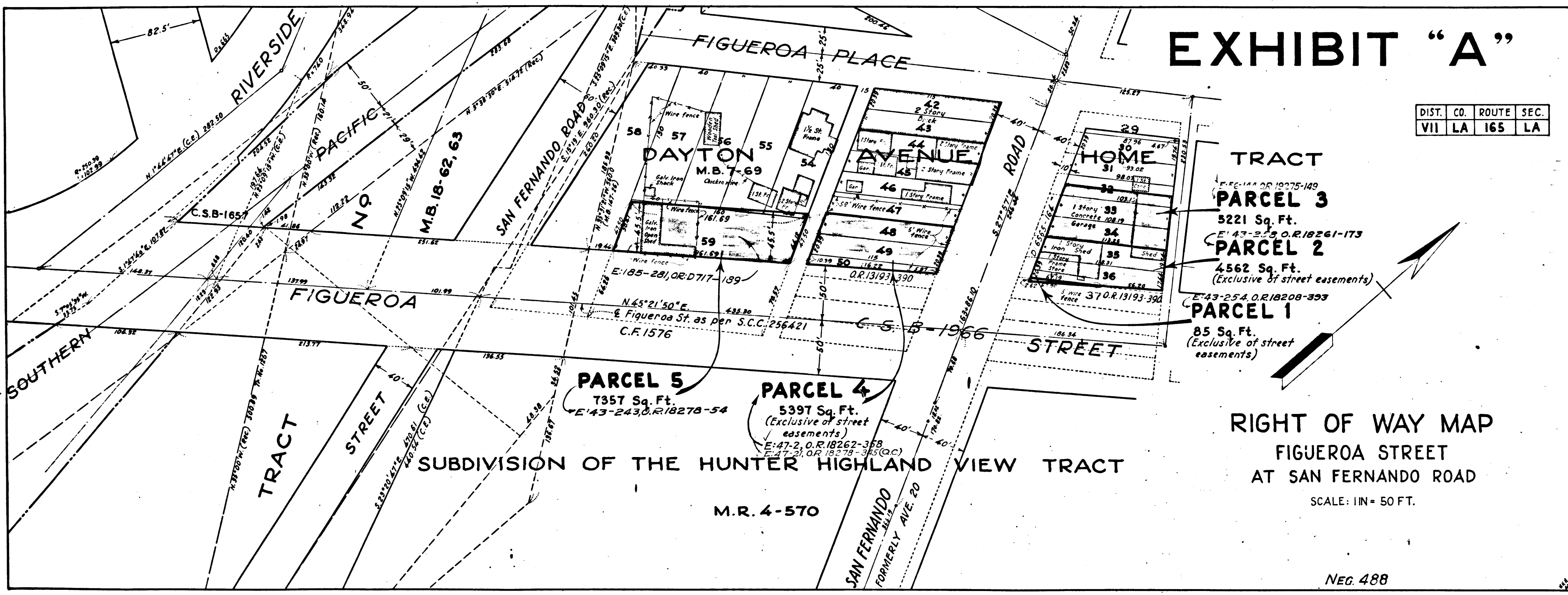


Sht-8  
A-610

# EXHIBIT "A"

DIST.	CO.	ROUTE	SEC.
VII	LA	165	LA

INDEX 8  
Superior Court Case No. 460508  
Suit for Condemnation  
Filed Jan. 24, 1941  
People of the State of Cal., Plffs.  
Vs  
Grace D. Lloyd, et al., Def.  
Order authorizing Plaintiff to  
take immediate possession, ren-  
dered Jan. 24, 1941.



C.F. 2145-