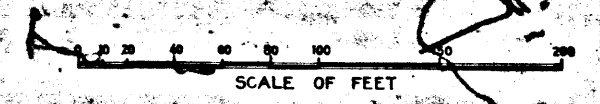


**MAP**  
 SHOWING REAL PROPERTIES TO BE CONDEMNED IN FEE  
 FOR PUBLIC STREET PURPOSES  
 IN CONNECTION WITH  
 THE CONSTRUCTION OF THE PROPOSED  
**ALISO STREET VIADUCT**  
 OVER  
 THE LOS ANGELES RIVER  
 IN THE CITY OF LOS ANGELES, CALIFORNIA  
 IN ACCORDANCE WITH ORDINANCE NO. 16160  
 LLOYD ALDRICH, CITY ENGINEER AUGUST 1940

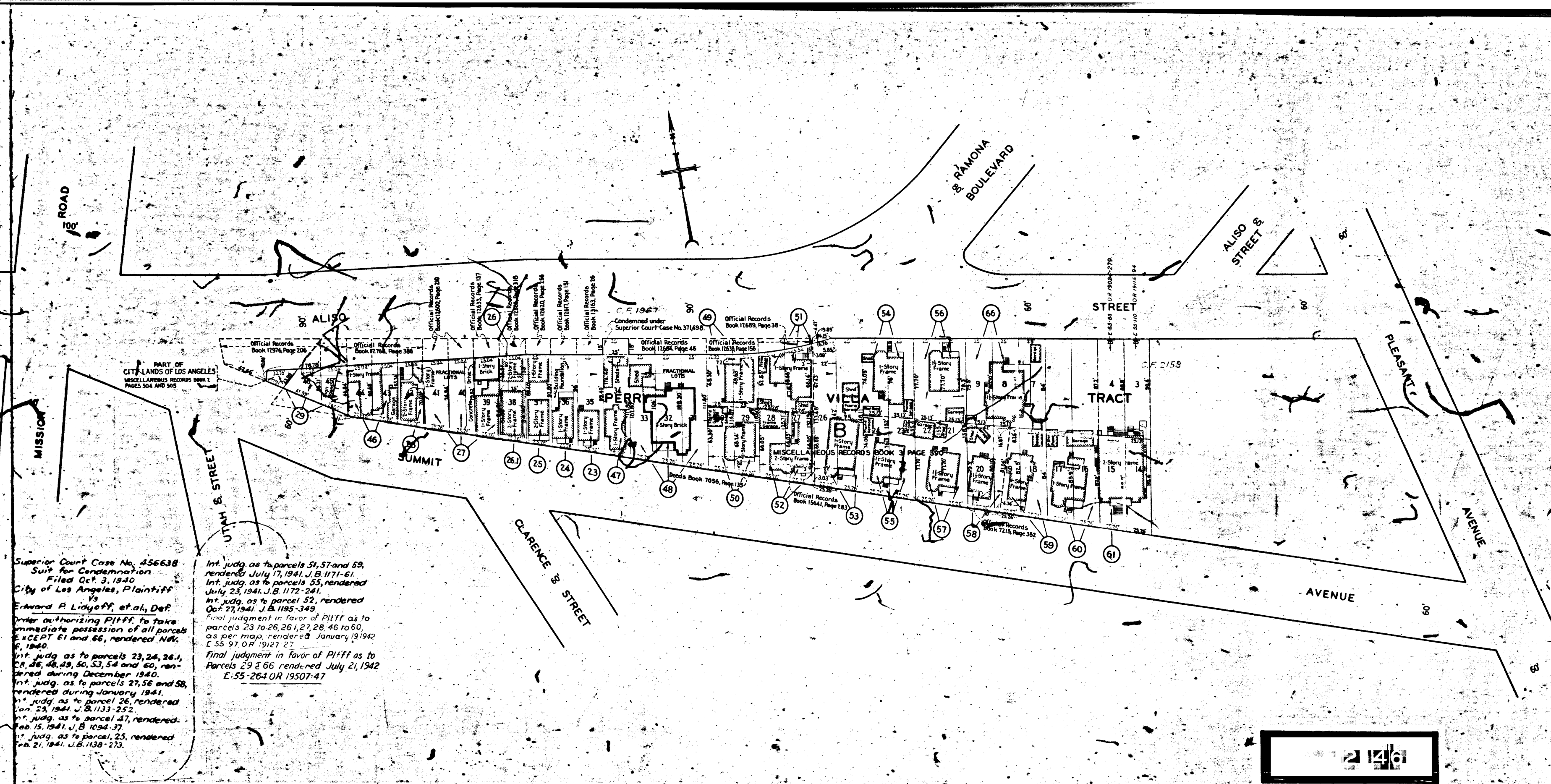


NOTES:—  
 LAND TO BE CONDEMNED FOR PUBLIC STREET PURPOSES SHOWN  
 COLORED RED.  
 DOTTED LINES AND DIMENSIONS SHOW PROPERTY HOLDINGS  
 IN THOSE CASES WHERE THEY DIFFER FROM RECORDED  
 SUBDIVISIONS.  
 FIGURES IN CIRCLES INDICATE PARCELS AS SET FORTH IN  
 PARAGRAPH 321 OF THE COMPLAINT.

INDEX 7

Right of Way Map		Improvement of	
ALISO STREET VIADUCT OVER THE LOS ANGELES RIVER		Order No. 40251	
City's File	Dist. Map 5516	Dist. Index	81
Survey/Change Order	required	By	
Date	Issued	Drawn	City
Submitted	August 3, 1940	Div. Dist. Eng.	
Approved		1940 Deputy Eng.	

A-6681



Superior Court Case No. 456638  
 Suit for Condemnation  
 Filed Oct. 3, 1940  
 City of Los Angeles, Plaintiff  
 vs  
 Edward R. Lidgoff, et al, Def.  
 Order authorizing Plaintiff to take  
 immediate possession of all parcels  
 23, 24, 25, 26, 27, 28, 29, 30, 31, 32, 33, 34, 35, 36, 37, 38, 39, 40, 41, 42, 43, 44, 45, 46, 47, 48, 49, 50, 51, 52, 53, 54, 55, 56, 57, 58, 59, 60, 61, rendered Nov. 6, 1940.  
 Int. judg. as to parcels 23, 24, 26, 28, 29, 30, 31, 32, 33, 34, 35, 36, 37, 38, 39, 40, 41, 42, 43, 44, 45, 46, 47, 48, 49, 50, 51, 52, 53, 54 and 60, rendered during December 1940.  
 Int. judg. as to parcels 27, 58 and 59, rendered during January 1941.  
 Int. judg. as to parcel 26, rendered Jan. 23, 1941, J.B. 1133-252.  
 Int. judg. as to parcel 47, rendered Feb. 15, 1941, J.B. 1094-37.  
 Int. judg. as to parcel 25, rendered Feb. 21, 1941, J.B. 1138-273.

Int. judg. as to parcels 51, 57 and 59, rendered July 17, 1941, J.B. 1171-61.  
 Int. judg. as to parcels 55, rendered July 23, 1941, J.B. 1172-241.  
 Int. judg. as to parcel 52, rendered Oct. 27, 1941, J.B. 1195-349.  
 Final judgment in favor of Plaintiff as to parcels 23 to 26, 28, 29, 30, 31, 32, 33, 34, 35, 36, 37, 38, 39, 40, 41, 42, 43, 44, 45, 46, 47, 48, 49, 50, 51, 52, 53, 54 and 60, as per map, rendered January 19, 1942, E. 55 97, O.P. 19127-27.  
 Final judgment in favor of Plaintiff as to parcels 29 & 66 rendered July 21, 1942, E. 55-264 OR 19507-47.

