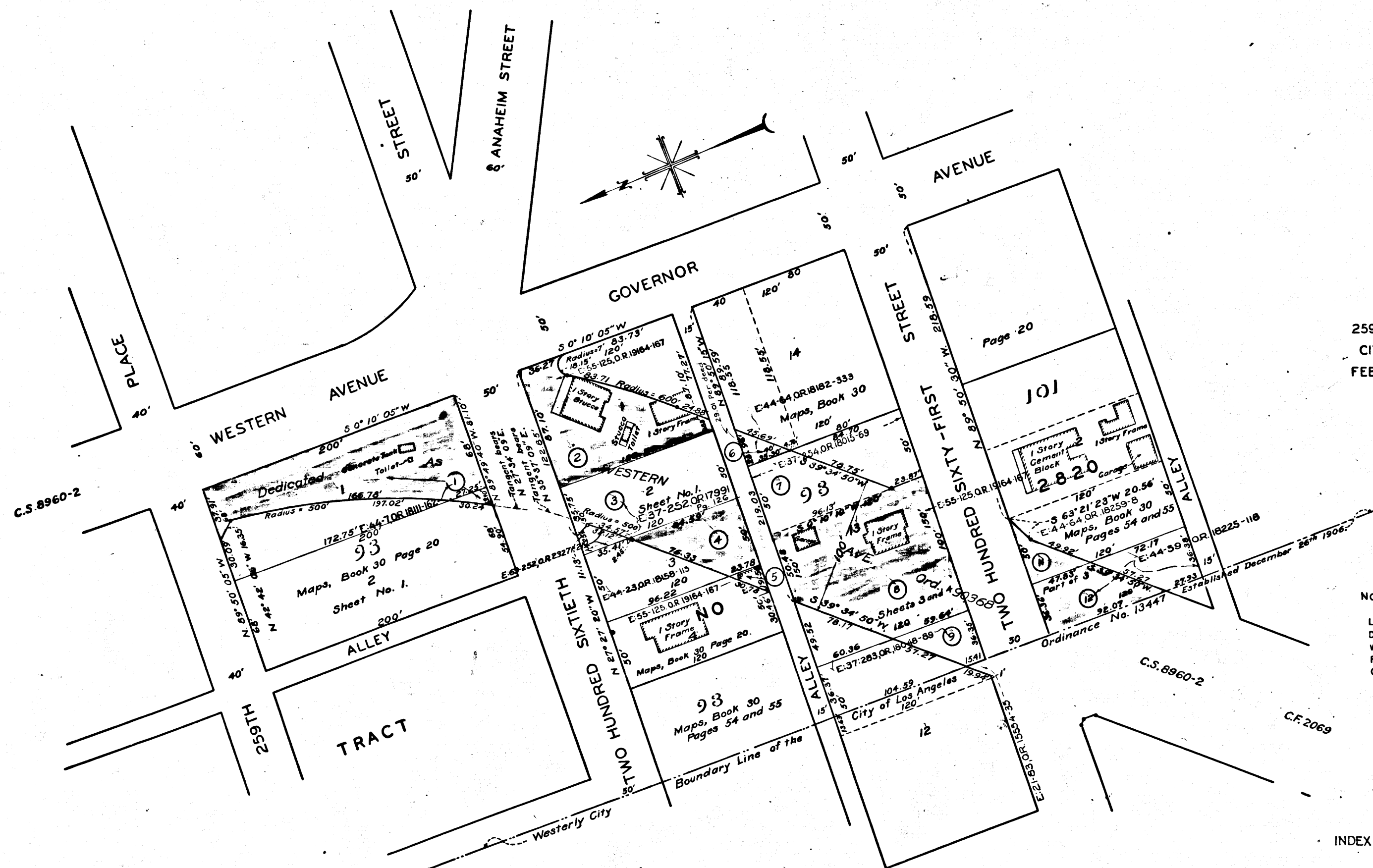


T000-A

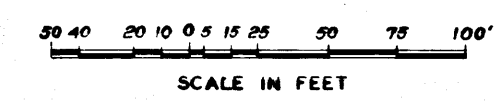
T000-A



MAP
 SHOWING LAND TO BE CONDEMNED
 FOR PUBLIC STREET PURPOSES
 FOR THE OPENING, WIDENING, AND LAYING OUT OF
WESTERN AVENUE
 BETWEEN

259TH PLACE AND THE WESTERLY CITY BOUNDARY OF THE
 CITY OF LOS ANGELES AT A POINT APPROXIMATELY 100
 FEET SOUTHERLY OF TWO HUNDRED SIXTY-FIRST STREET

IN THE CITY OF LOS ANGELES CALIFORNIA.
 IN ACCORDANCE WITH ORDINANCE NO. 83641
 LLOYD ALDRICH-CITY ENGINEER SEPTEMBER 1940



NOTES:
 LAND TO BE CONDEMNED FOR PUBLIC STREET PURPOSES SHOWN COLORED RED-
 DOTTED LINES AND DIMENSIONS SHOW PROPERTY HOLDINGS IN THOSE CASES
 WHERE THEY DIFFER FROM RECORDED SUBDIVISIONS.
 FIGURES IN CIRCLES INDICATE PARCELS AS SET FORTH IN PARAGRAPH X
 OF THE COMPLAINT.

Neg. 487	
Right of Way No. 4726	Improvement of
WESTERN AVENUE between 259 th PLACE	
and W.C.B. at 261 st ST. Order No. A.C. 75513	
Clerk's File #301-37 Dist. Map 4939 Div. Index 254	
Sewers/Storm Drains required 19 By	
Calc. Traced Sweet Drawn	Clid Hart
Submitted 19 Div. Dist. Engr.	
Submitted Sept 26 1940 Deputy Engr.	Walter J. Hart
Approved July 26 1942 City Engineer	Walter J. Hart

*Superior Court Case No. 459415
 Suit for Condemnation
 Filed Dec. 20, 1940
 City of Los Angeles, Plaintiff
 vs
 Clara C. Bell, et al, Defendants.
 Suit covers parcels 1, 2, 4, 5, 6, 8, 11
 and 12.
 Order authorizing Pltff. to take
 immediate possession of parcels 2, 5
 and 8, rendered Jan. 7, 1941. All parcels except 7
 Order authorizing Pltff. to take
 immediate possession of parcels 4, 6,
 11 and 12, rendered Jan. 30, 1941.
 Int. judg. as to parcel 2, rendered June
 2, 1941. J.B. 1158-211.
 Int. judg. as to parcel 5, rendered Oct.
 5, 1941. J.B. 1190-203.
 Final judg. as to parcels 2, 5 & 8 in
 favor of Pltff. rendered Feb. 18, 1942
 E. 55-125
 Case dismissed as to Pels 4, 12, 21-40, 6, 11 (1327-4)
 12 (1-2-41) 1 (1-28-42)*

INDEX 28

A-6667

C.F. 2148-

T000-A

T000-A