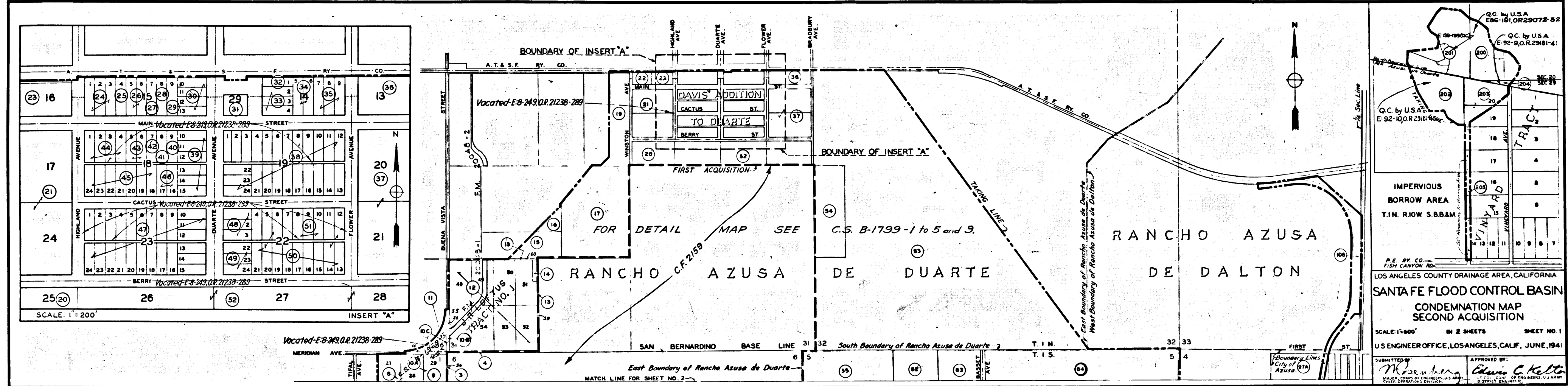


WAR DEPARTMENT

CORPS OF ENGINEERS, U.S. ARMY



Final Judgment in favor of Plaintiff as to Parcel 35 rendered March 26, 1942 E-66-284, Bk Co-9-707

Final Judgment in favor of Plaintiff as to Parcel 26 rendered March 26, 1942 E-66-286, Bk Co-9-754

Final Judgment in favor of Plaintiff as to Parcel 41 rendered March 26, 1942 E-66-287, Bk Co-9-758

Final Judgment in favor of Plaintiff as to Parcel 45 rendered March 26, 1942 E-66-288, Bk Co-9-762

Final Judgment in favor of Plaintiff as to Parcel 25 rendered March 26, 1942 E-66-289, Bk Co-9-780

Final Judgment in favor of Plaintiff as to Parcel 20 rendered March 26, 1942 E-66-290, Bk Co-9-765

Final Judgment in favor of Plaintiff as to Parcel 15 rendered March 26, 1942 E-66-285, Bk Co-9-751

Final Judgment in favor of Plaintiff as to Parcel 40 rendered March 26, 1942 E-66-286, Bk Co-9-756

Final Judgment in favor of Plaintiff as to Parcel 54 rendered March 26, 1942 E-66-285, Bk Co-9-762

Final Judgment in favor of Plaintiff as to Parcel 61 rendered March 26, 1942 E-66-289, Bk Co-9-780

Final Judgment in favor of Plaintiff as to Parcel 25 rendered March 26, 1942 E-66-290, Bk Co-9-765

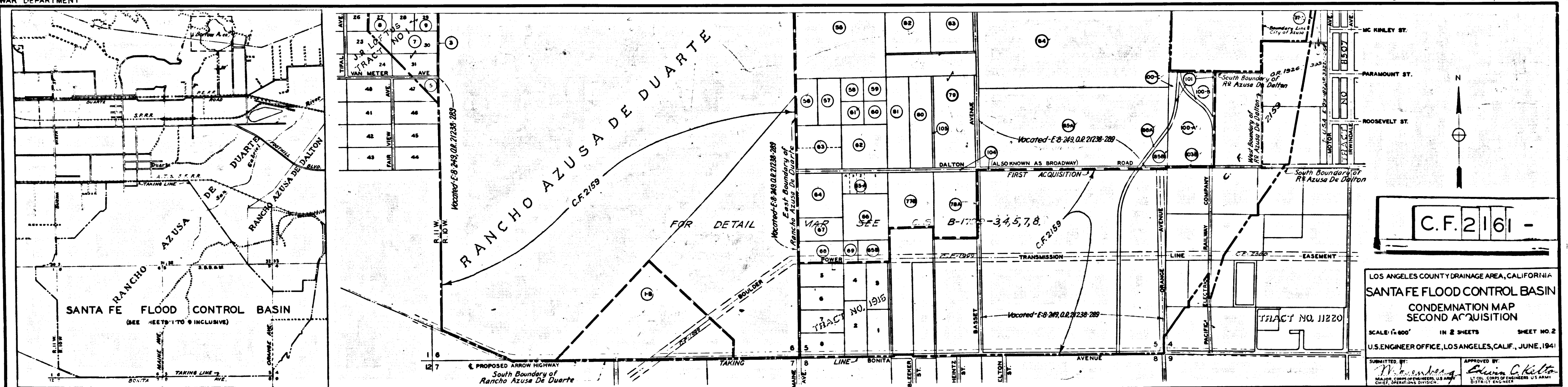
Final Judgment in favor of Plaintiff as to Parcel 19 rendered March 26, 1942 E-66-285, Bk Co-9-751

Final Judgment in favor of Plaintiff as to Parcel 19 rendered Dec 31, 1947 E-65-31, OR 192762-355

Final Judgment in favor of Plaintiff as to Parcel 34 - E-64-70, OR 20425-161	Final Judgment in favor of Plaintiff as to Parcel 14 - E-60-246, OR 19672-342	Final Judgment in favor of Plaintiff as to Parcel 25 - E-56-212, OR 19204-214	Final Judgment in favor of Plaintiff as to Parcel 62 - E-56-174, OR 19306-39	Final Judgment in favor of Plaintiff as to Parcel 43 - E-56-174, OR 19306-39	Final Judgment in favor of Plaintiff as to Parcel 23 - E-54-245, OR 19191-93
Final Judgment in favor of Plaintiff as to Parcel 34 - E-64-70, OR 20425-161	Final Judgment in favor of Plaintiff as to Parcel 14 - E-60-246, OR 19672-342	Final Judgment in favor of Plaintiff as to Parcel 25 - E-56-212, OR 19204-214	Final Judgment in favor of Plaintiff as to Parcel 62 - E-56-174, OR 19306-39	Final Judgment in favor of Plaintiff as to Parcel 43 - E-56-174, OR 19306-39	Final Judgment in favor of Plaintiff as to Parcel 23 - E-54-245, OR 19191-93
Final Judgment in favor of Plaintiff as to Parcel 34 - E-64-70, OR 20425-161	Final Judgment in favor of Plaintiff as to Parcel 14 - E-60-246, OR 19672-342	Final Judgment in favor of Plaintiff as to Parcel 25 - E-56-212, OR 19204-214	Final Judgment in favor of Plaintiff as to Parcel 62 - E-56-174, OR 19306-39	Final Judgment in favor of Plaintiff as to Parcel 43 - E-56-174, OR 19306-39	Final Judgment in favor of Plaintiff as to Parcel 23 - E-54-245, OR 19191-93

WAR DEPARTMENT

CORPS OF ENGINEERS, U.S. ARMY



LOS ANGELES COUNTY DRAINAGE AREA, CALIFORNIA  
 SANTA FE FLOOD CONTROL BASIN  
 CONDEMNATION MAP  
 SECOND ACQUISITION  
 SCALE: 1"=600' IN 2 SHEETS SHEET NO. 2  
 U.S. ENGINEER OFFICE, LOS ANGELES, CALIF., JUNE, 1941

NEG. 510 SHTS 1 & 2 FILE NO. R.W. 7-8-C  
 INDEX No 46-47-13