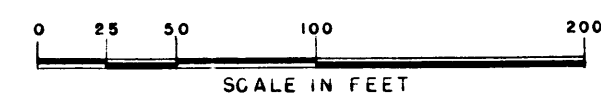


**MAP**  
 SHOWING  
 LAND TO BE CONDEMNED  
 FOR PUBLIC STREET PURPOSES  
 FOR THE OPENING, EXTENDING AND LAYING OUT OF  
**WILLOW GLEN ROAD**  
 FROM ZORADO DRIVE AT A POINT APPROXIMATELY  
 500 FEET NORTHWESTERLY OF NICHOLS CANYON  
 ROAD TO THE EASTERLY TERMINUS OF WILLOW  
 GLEN ROAD EASTERLY OF ALGODON COURT  
 IN THE  
 CITY OF LOS ANGELES CALIFORNIA  
 IN ACCORDANCE WITH ORDINANCE NO. 85204  
 LLOYD ALDRICH CITY ENGINEER SEPTEMBER 1941



NOTES:  
 LAND TO BE CONDEMNED FOR PUBLIC STREET PURPOSES SHOWN COLORED RED.  
 DOTTED LINES AND DIMENSIONS SHOW PROPERTY HOLDINGS IN THOSE CASES  
 WHERE THEY DIFFER FROM RECORDED SUBDIVISIONS.

ACT NO 7622  
 BOOK 86 PAGES 44 AND 45

For entire holding see marginal sketch.

Superior Court Case No. 468209  
 Suit for Condemnation  
 Filed Sept. 16, 1941  
 City of Los Angeles, Plaintiff  
 vs  
 Bank of America Nat. Tr. & Sav. Assn., Def.

Final judgment as to parcels 1&2 in  
 favor of Plff rendered March 27, 1942  
 E:55-168, O.R.19184-392

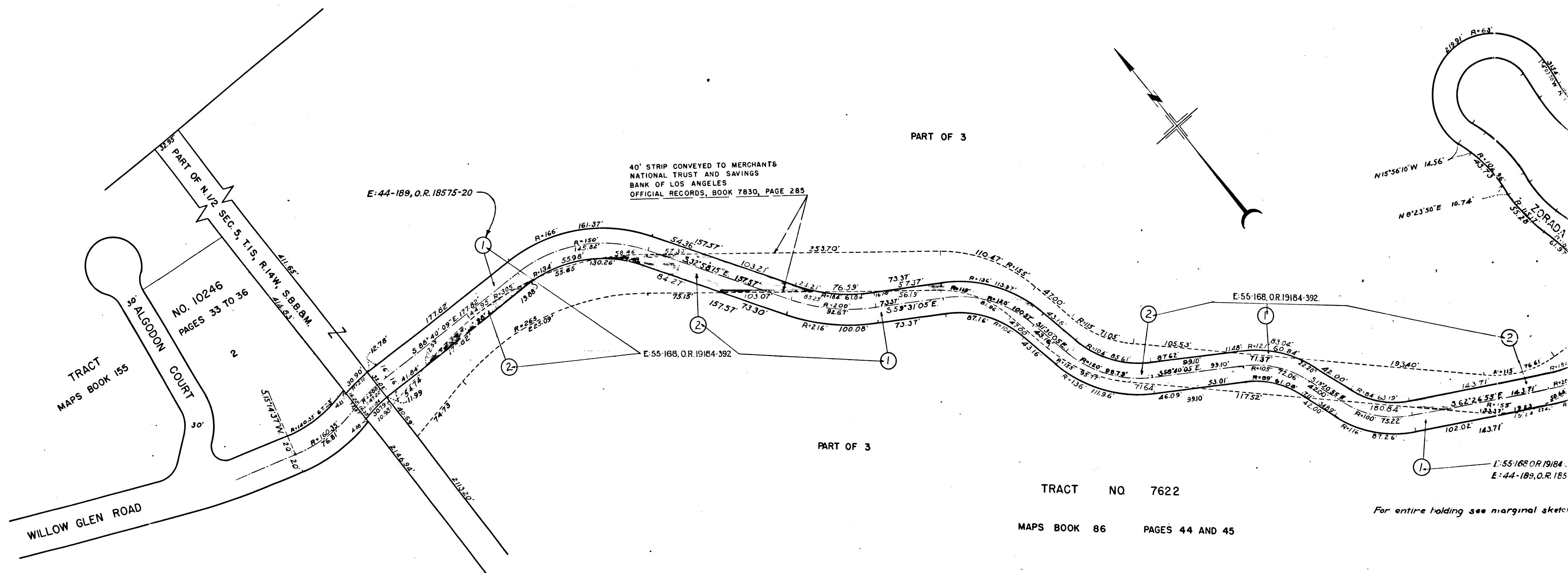
INDEX 22

WILLOW GLEN ROAD - NICHOLS CANYON ROAD			
TO ALGODON COURT		Right of Way No. 20221	
Clerk No. 7475	Dist. Map 7019	Div. Index 1539	
Clerk's File 5840	Council Dist.	Eng. Dist.	
Plans & Profiles	Field Books 19266		
Office Work by Arriving Cld. Mueller Supervised by W. Tupper			
Submitted	1941	Div. Dist. Engr.	
Submitted	Sept. 17, 1941	Deputy Engr.	
Approved		City Engineer	

Revised Nov. 13, 1941 to show entire holding Lot 3. PBA.

C.F. 2167 -

A-6750  
NEG. 513



2

C.F. 2167-