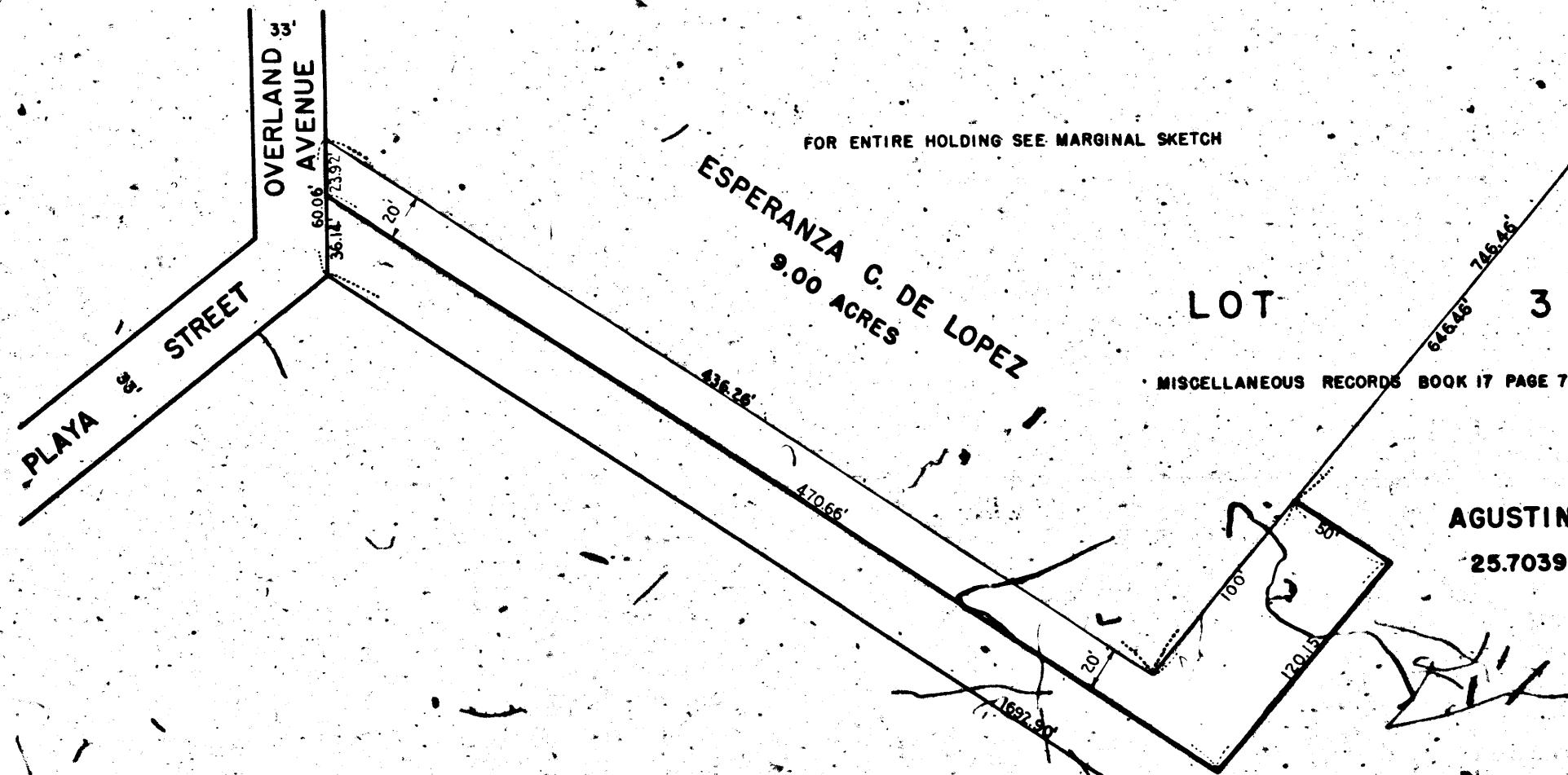
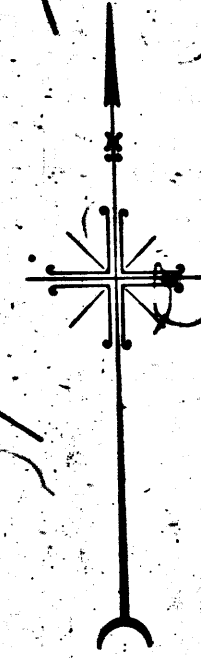


2479-A

2479-A



AGUSTIN COTA
25.7039 ACRES



MAP

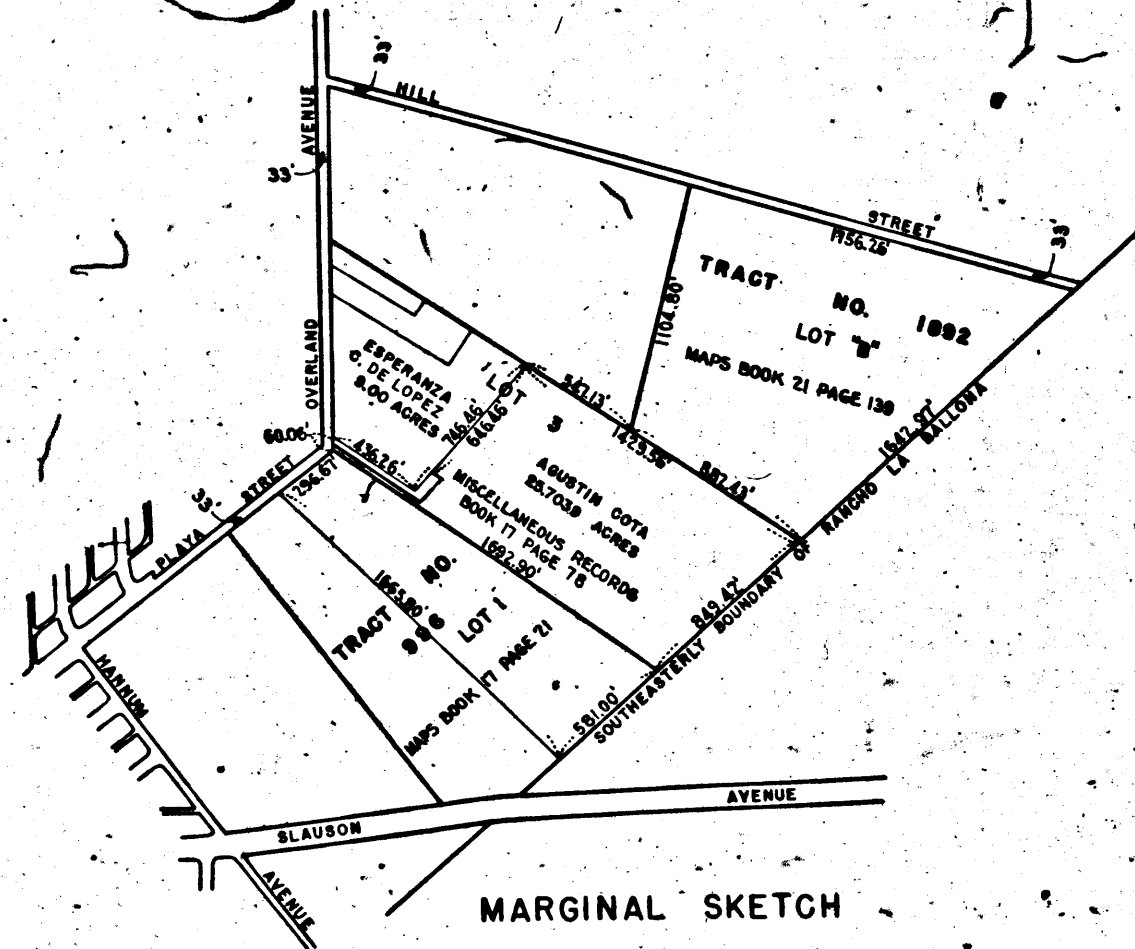
SHOWING REAL PROPERTY TO BE CONDEMNED IN FEE
 BY THE CITY OF LOS ANGELES
 FOR PUBLIC BUILDINGS AND GROUNDS
 AND FOR THE ERECTION CONSTRUCTION AND MAINTENANCE OF
A SEWER VENTILATING STATION
 SAID REAL PROPERTY
 LOCATED IN UNINCORPORATED TERRITORY
 OF THE COUNTY OF LOS ANGELES
 AND LYING SOUTHEASTERLY OF
OVERLAND AVENUE
 AT
PLAYA STREET

IN ACCORDANCE WITH ORDINANCE NO. 84876
 AMENDED BY ORDINANCE NO. 85202
 LLOYD ALDRICH, CITY ENGINEER JULY 1941



NOTE
 LAND TO BE CONDEMNED FOR PUBLIC BUILDINGS AND GROUNDS SHOWN COLORED RED.

*Superior Court Case No. 4082
 State of California
 vs. Red Cota et al.*



MARGINAL SKETCH
 NOT TO SCALE

Title: NORTH OUTFALL SEWER VENTILATING			
Station No. 3	Sheet 11 of 151 No.		
Order No. 60830	Dist. Man.	CO. W.S. NO. 23	Inv. No.
Chief's File 3372-41	Council Dist.	Eng. Dist.	CENTRAL
Plans & Books		Field Books	
Drawn by Mueller, Chd. Iversen Supervised by W. Tupper			
Scale 1" = 40'	1" = 40'	Div. Dist. Engr.	1941
City of Los Angeles	1941	Dist. Engr.	1941
Inspector	1941	City	1941



RETURN TO CITY ENGINEER'S OFFICE
 CITY OF LOS ANGELES
 PROPERTY OF THE

RETURN TO CITY ENGINEER'S OFFICE
 CITY OF LOS ANGELES
 PROPERTY OF THE

2479-A

2479-A