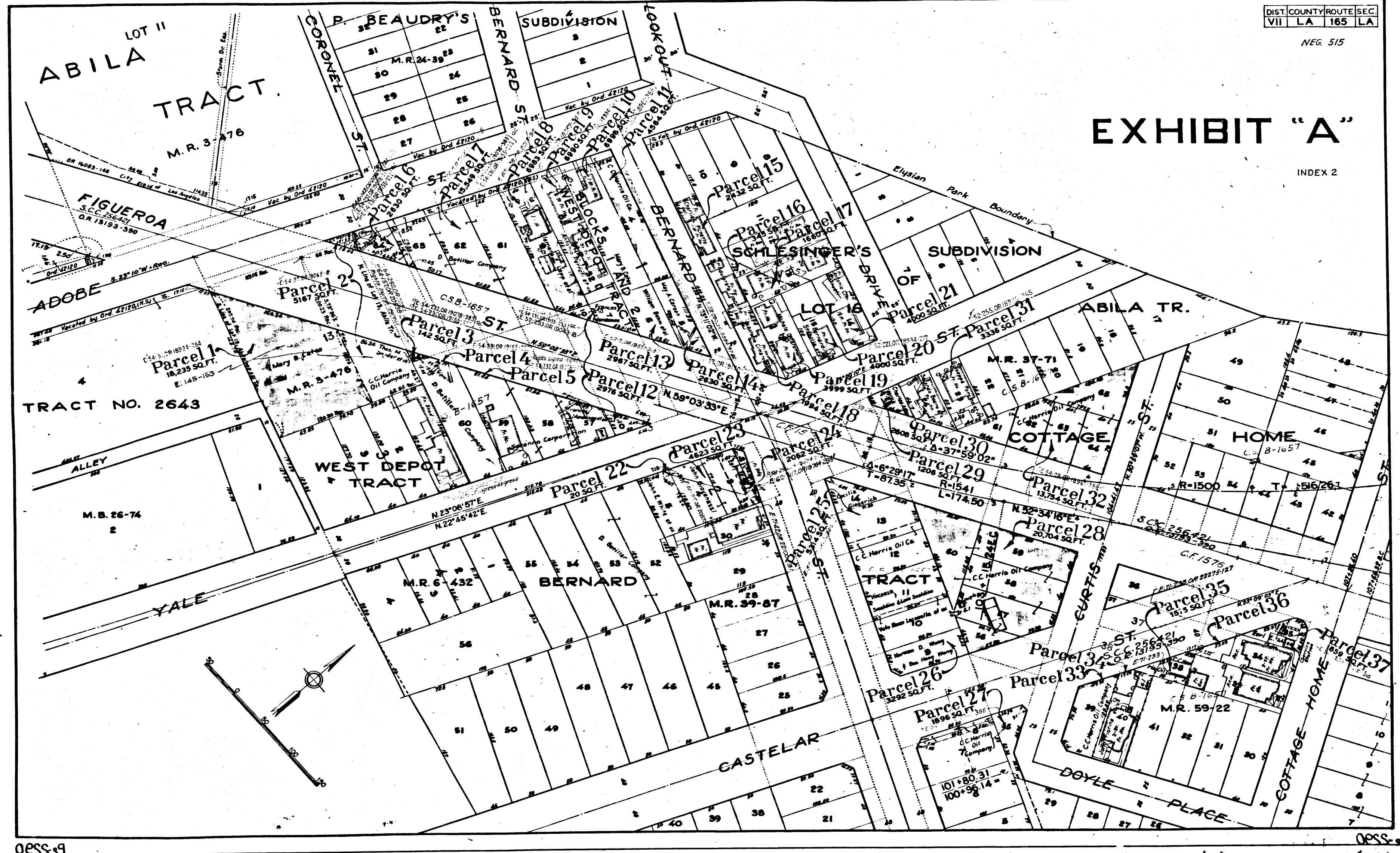


DIST. COUNTY ROUTE SEC.
VII LA 165 LA

NEG. 515

EXHIBIT "A"

INDEX 2



Case covers Parcels 1 to 8, 10 to 14, 20, 21, 29, 31 to 37

Superior Court Case No. 471077
Suit for Condemnation
Filed Dec. 16, 1941
The People of the State of California, Plffs.
Vs.
Mary B. Cates, et al. Def.

Order authorizing Plaintiff to take immediate possession rendered December 16th, 1941.
All Parcels

Case dismissed as to Parcels 1, 2, 10, 11, 2, 13, 14, 20, 25, 27, 28, 29, 31, 32, 34 Sept. 29-43

C.F. 2171 -