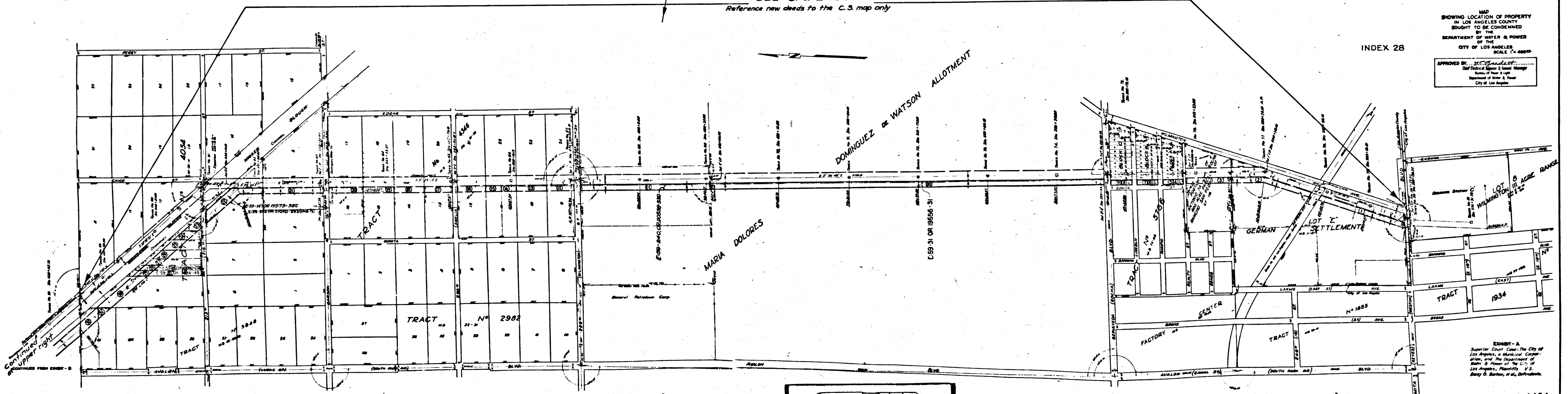


SEE C. S. B-1884  
Reference new deeds to the C.S. map only

INDEX 26  
MAP SHOWING LOCATION OF PROPERTY IN LOS ANGELES COUNTY SOUGHT TO BE CONDEMNED BY THE DEPARTMENT OF WATER & POWER OF THE CITY OF LOS ANGELES SCALE 1" = 4000'  
APPROVED BY: [Signature] Chief Engineer, Department of Water & Power, City of Los Angeles

Superior Court Case No. 476135  
Suit for Condemnation  
Filed May 6, 1942  
City of Los Angeles, Plaintiff,  
Vs.  
Daisy G. Barlow, et al, Def.  
Case covers parcels 1 to 43 inclusive  
Order authorizing Immediate Possession of all parcels given Apr. 6-1942  
Case dismissed as to parcels 3 to 10, 13 to 19, 21 to 26, 28 to 34, 36 to 43 Jun. 9-1943  
Case dismissed as to parcels 11 & 35 Mar. 16-1944

SEE C. S. B-1883 sht 3  
Reference new deeds to the C.S. map only



INDEX 28  
MAP SHOWING LOCATION OF PROPERTY IN LOS ANGELES COUNTY SOUGHT TO BE CONDEMNED BY THE DEPARTMENT OF WATER & POWER OF THE CITY OF LOS ANGELES SCALE 1" = 4000'  
APPROVED BY: [Signature] Chief Engineer, Department of Water & Power, City of Los Angeles

C.F. 2179-