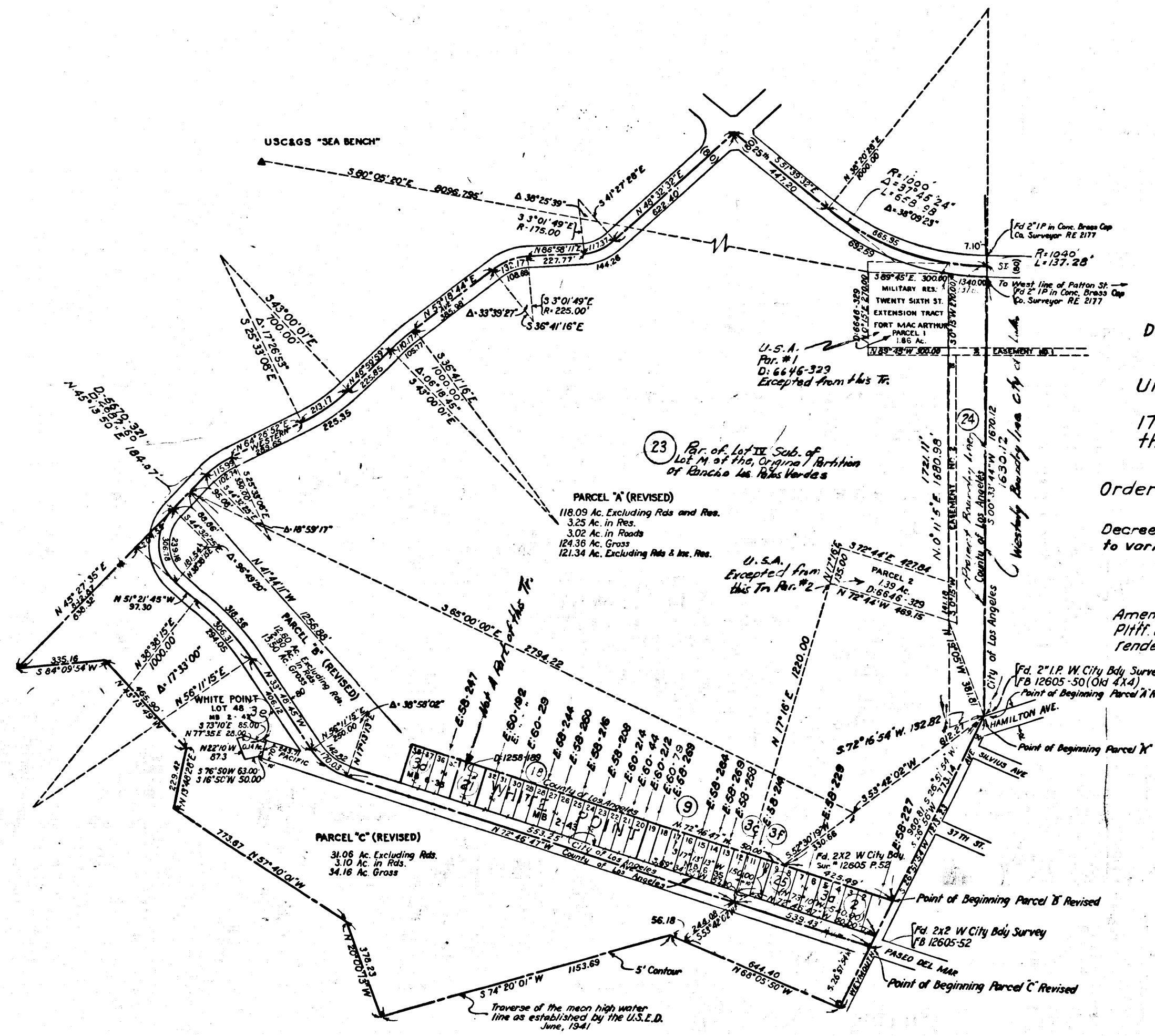
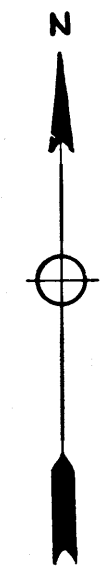


U.S. DISTRICT COURT DISTRICT OF LOS ANGELES

U.S. DISTRICT COURT DISTRICT OF LOS ANGELES



District Court Case No. 2207-B
Suit for Condemnation
Filed Apr. 27, 1942
United States of America, Pltff.
Vs
170.77 Acs. of Land, more or less,
in the City of Los Angeles, etal, Def.

Order for Immediate Possession rendered Apr. 27, '42.

Decree on Declaration of Taking No. 1, in favor of Pltff. as to various parcels rendered Aug 13, 1942
E: 60-16, O.R. 19556-348

Amendment of Declaration of Taking No. 1, in favor of Pltff. as to parcels, 2, 3A, 3C, 3D, 3E, 3F, 21, 23, 24, 25 rendered April 14, 1943
E: 68-183

Por. of Par. 'C' Tr. 23 excluded from D.T. and reverted in certain defendants
E: 192-36, O.R. 49711-175

NOTE
PARCELS "A", "B" & "C" ARE PARTS OF LOT IV, SUBDIVISION OF LOT "M" OF ORIGINAL PARTITION OF THE RANCHO LOS PALOS VERDES AS PER BK. I, PG. 47 L.S. REC. LA. CO. EXCEPT IN SUBDIVISIONS.

PARCEL K
PARCEL A (REVISED) - 121.11 AC. - EXCLUDES RES.
PARCEL B (REVISED) - 15.50 AC.
PARCEL C (REVISED) - 34.16 AC.
TOTAL - 170.77 AC.

HARBOR DEFENSES OF LOS ANGELES CALIFORNIA
WHITE POINT
PARCEL "K"
PLAT OF LAND TO BE ACQUIRED
SCALE 1 IN. = 200 FT. IN ONE SHEET
GRAPHIC SCALE 0 100 200 300 FEET
DATUM IS MEAN SEA LEVEL
U. S. ENGINEER OFFICE, LOS ANGELES, CALIF.

INDEX 29

C.F. 2189 -