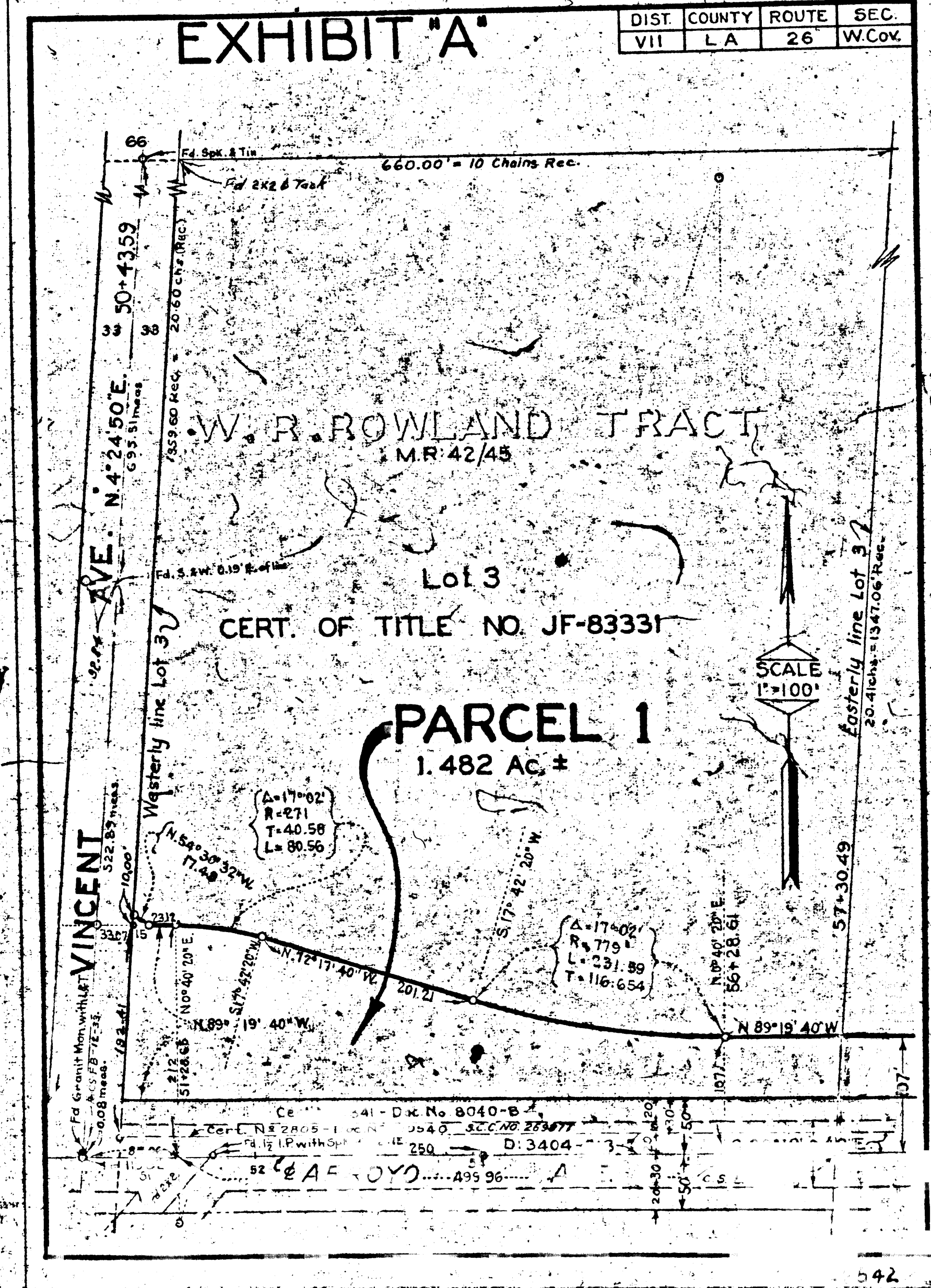


EXHIBIT "A"

DIST.	COUNTY	ROUTE	SEC.
VII	LA	26	W.CoV.



INDEX 47

Superior Court Case No. 480705
Suit for Condemnation
Filed Oct. 2, 1942.
The People of the State of Calif., Plff.
Vs
Elmer L. King, et al, Defts. Dismissed by Plff.

