

MAP SHOWING REAL PROPERTIES TO BE CONDEMNED FOR PUBLIC STREET PURPOSES

ALSO
SHOWING REAL PROPERTIES
TO WHICH IT IS PROPOSED TO ASCERTAIN DAMAGES IF ANY
WHICH WILL BE CAUSED BY THE PROPOSED IMPROVEMENT
ALSO
SHOWING EASEMENTS AND RIGHTS OF WAY TO BE CONDEMNED
FOR THE EXTENSION OF SLOPES OF CUTS
ALL FOR PUBLIC STREET PURPOSES
IN CONNECTION WITH THE PROPOSED
EL PASO DRIVE
IMPROVEMENT PROJECT

BETWEEN
A POINT APPROXIMATELY 170 FEET NORTHWESTERLY OF
AND A POINT APPROXIMATELY 560 FEET NORTHWESTERLY OF
AVENUE 45
AND BETWEEN
A POINT APPROXIMATELY 400 FEET SOUTHEASTERLY OF
AND A POINT APPROXIMATELY 151 FEET SOUTHEASTERLY OF
EAGLE ROCK BOULEVARD
IN THE CITY OF LOS ANGELES CALIFORNIA
IN ACCORDANCE WITH ORDINANCE NO. 87640

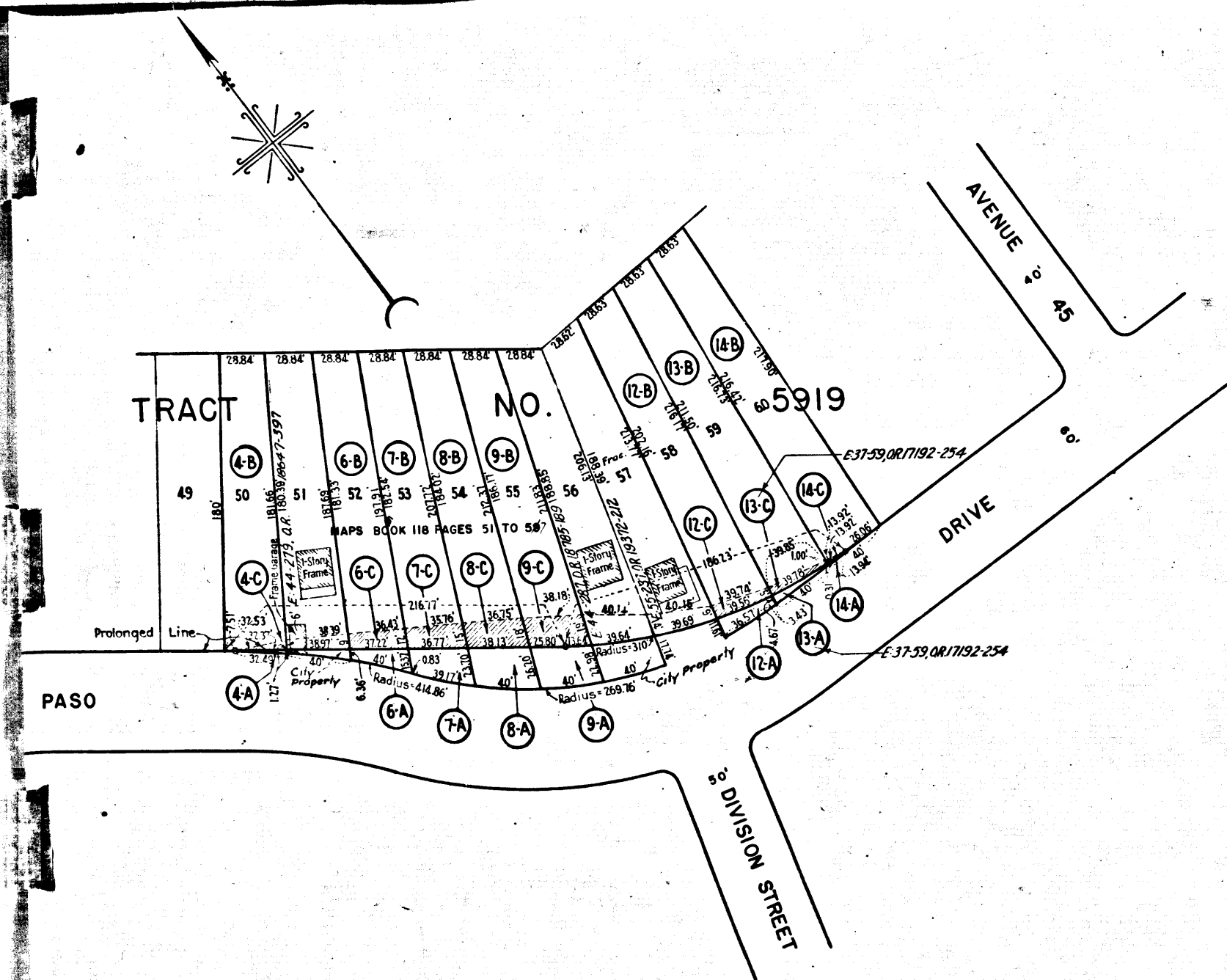
LLOYD ALDRICH CITY ENGINEER MAY 1943
SCALE IN FEET INDEX 41

NOTES
LAND TO BE CONDEMNED FOR PUBLIC STREET PURPOSES SHOWN COLORED RED.
REAL PROPERTIES TO WHICH IT IS PROPOSED TO ASCERTAIN DAMAGES IF ANY
SHOWN OUTLINED IN YELLOW.
EASEMENTS AND RIGHTS OF WAY TO BE CONDEMNED FOR THE EXTENSION OF
SLOPES OF CUTS SHOWN THUS
FIGURES AND LETTERS IN CIRCLES INDICATE PARCELS AS SET FORTH IN
PARAGRAPH XII OF THE COMPLAINT.

Superior Court Case No 467530
Suit for Condemnation
Filed Aug 16th 1943
City of Los Angeles, Plff.
Vs.
Ruth Nord, et al Def

Final order of condemnation in favor of
Plff. as to parcels 1A, 1B, 3A, 4B
rendered Aug 10, 1945. E-69137; R-2282-328

Final order of condemnation in favor of
Plff. as to parcels 2A, 2B, 4A, 4B, 4C, 6A, 6B,
6C, 7A, 7B, 7C, 8A, 8B, 8C, 9A, 9B, 9C, 12A, 12B,
12C, 13A, 13B, 13C, 14A, 14B, & 14C
rendered Oct 2, 1945. E-69138; R-2297-15



C.F. 2269-

Title: EL PASO DRIVE - 200 FEET EAST OF DIVISION
ST. TO EAGLE ROCK BLVD. Right of Way No.
Order No. 60476 Dist. Map 156-82, 4920 Div. Index 387
City's File 1188-38 Section 34. Eng. Date 12/21/41
Plans & Profiles P-8461 Field Notes 3566, 3588
Office Work by Mueller, Oldenburger, Supervised by Tupper