

SHEET 1 OF 1 SHEET
BROADFIELD BLVD
CONDEMNATION MAP

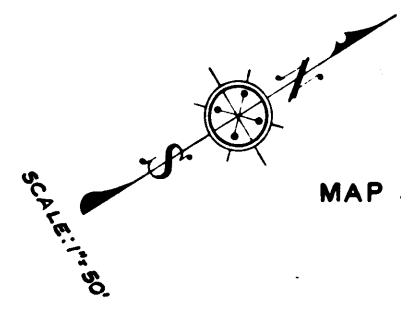
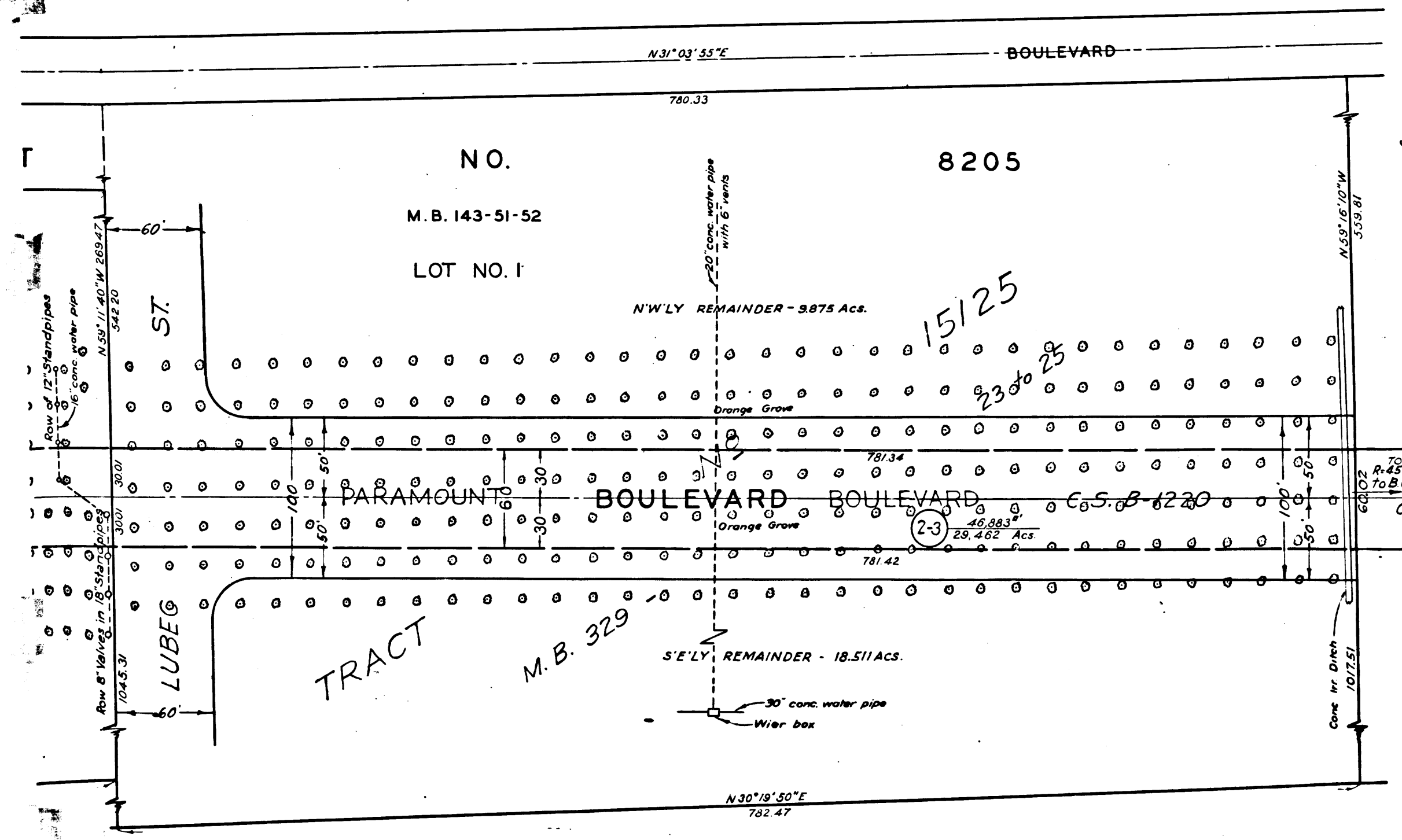
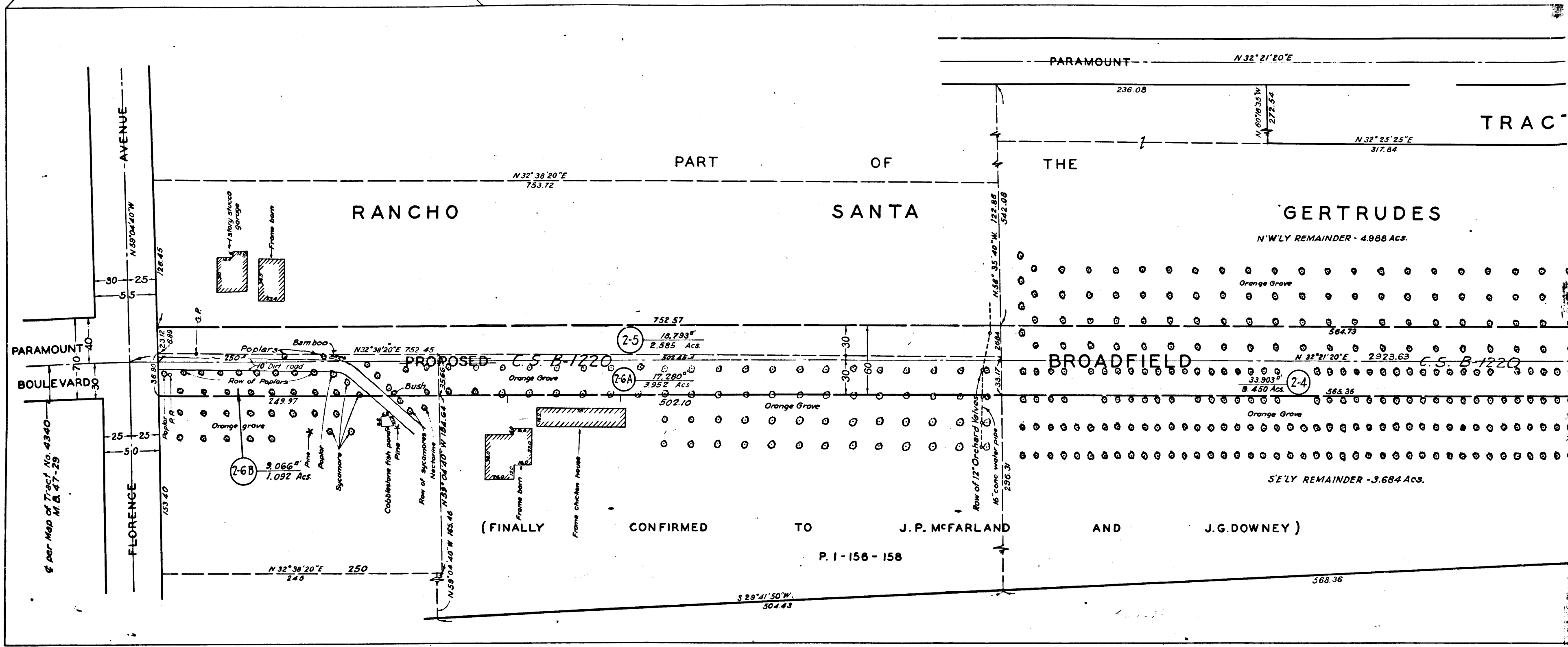


EXHIBIT "A"

MAP SHOWING PROPERTY TO BE ACQUIRED FOR THE OPENING OF

BROADFIELD BOULEVARD

IN ACCORDANCE WITH A RESOLUTION OF THE BOARD OF SUPERVISORS OF LOS ANGELES COUNTY

ALFRED JONES, COUNTY SURVEYOR

AUGUST 1947

LEGEND

NUMBERS IN CIRCLES REPRESENT PARCELS SOUGHT TO BE ACQUIRED.

PORTIONS COLORED RED SHOW EASEMENTS SOUGHT TO BE ACQUIRED FOR HIGHWAY PURPOSES.

AREAS OF PARCELS SOUGHT TO BE ACQUIRED SHOWN
THUS: 0000 = AREA OF PARCEL IN SQUARE FEET
00000 = AREA OF HOLDING IN ACRES

DRAWN BY	DATE	CHECKED BY	DATE	CALCULATED BY	DATE	CHECKED BY	DATE
S.S. & W.C.P.	9-46	H.M.H. & D.J.S.	10-46	S.SILVERMAN	9-46	H.M.HALL	10-46

REFERENCES: ALIGNMENT: C.S. B-1220

TOPOGRAPHY: F. B. 815

INDEX MAP 36(C-6), 33(A-1) ASSESSOR BOOK 360

BROADFIELD BOULEVARD SHEET 1 OF 1 SHEET

Superior Court Case No. 53732
Suit for Condemnation
Filed Nov. 19, 1947
County of Los Angeles, Plaintiff
vs.
Clarence R. Parker, et al., Defts.

Order authorizing plaintiff to take immediate possession of all parcels rendered January 5, 1948.

Final Judgment in favor of Plaintiff as per map, rendered Aug. 27, 1948, E85-16A, O.R. 28257-17A

Broadfield Blvd changed to Paramount

C.F. 2308 -