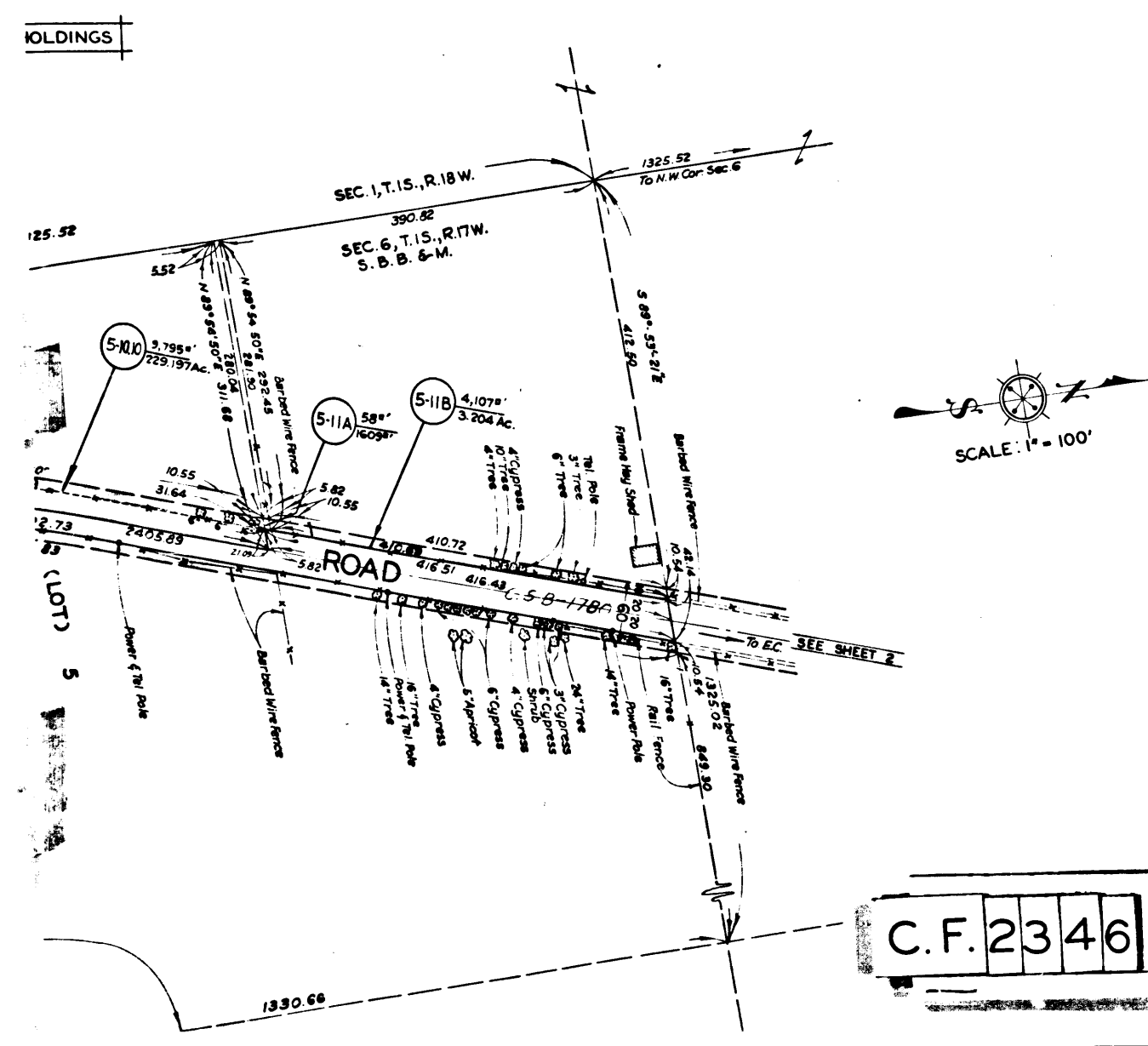


SCALE: 1" = 100'

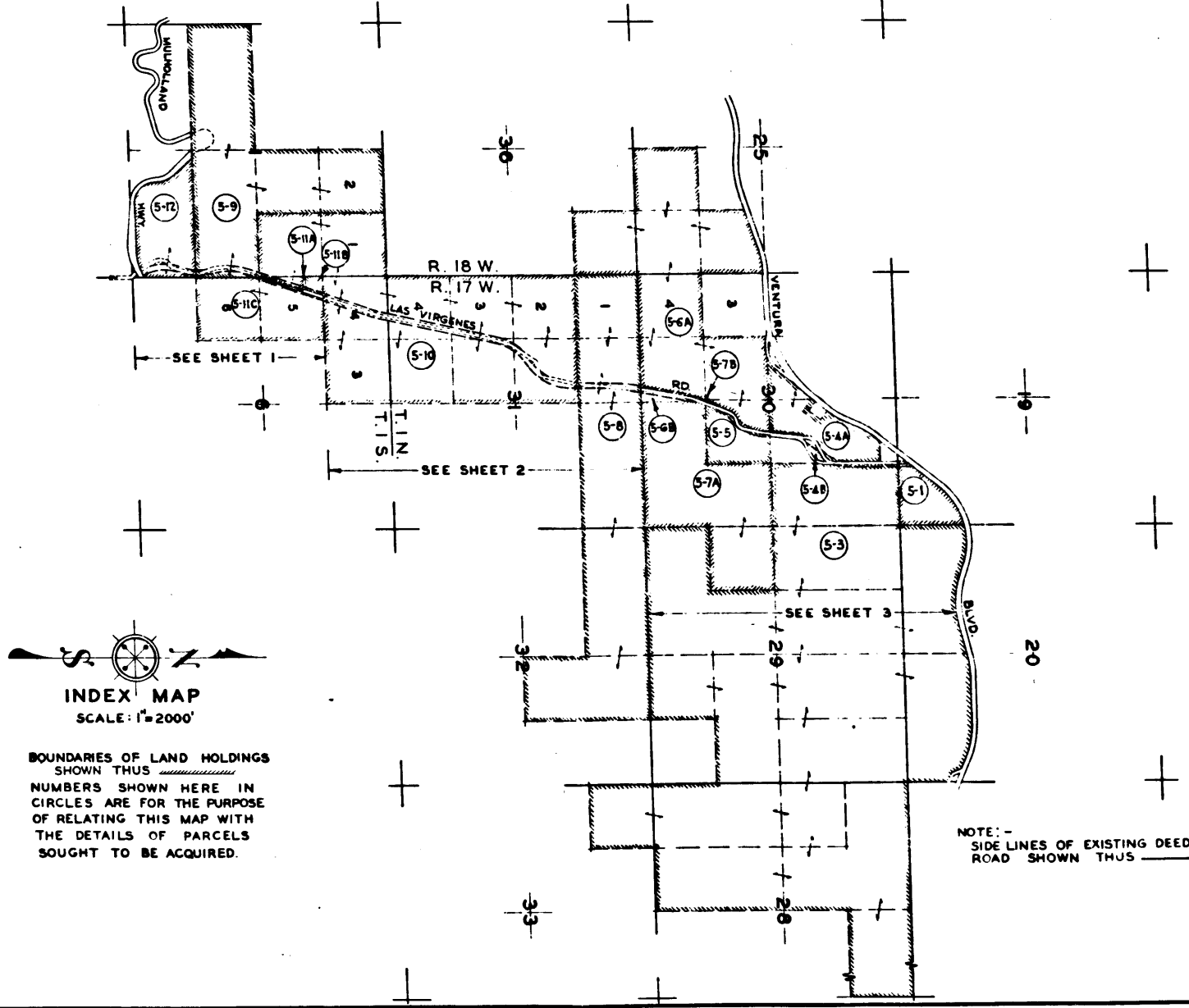
SEE INDEX MAP AT RIGHT FOR EXTENT OF HOLDINGS

SEE INDEX MAP AT RIGHT FOR EXTENT OF HOLDINGS



SCALE: 1" = 100'

C.F. 2346 1-3



INDEX MAP
SCALE: 1" = 2000'

BOUNDARIES OF LAND HOLDINGS SHOWN THUS
NUMBERS SHOWN HERE IN CIRCLES ARE FOR THE PURPOSE OF RELATING THIS MAP WITH THE DETAILS OF PARCELS SOUGHT TO BE ACQUIRED.

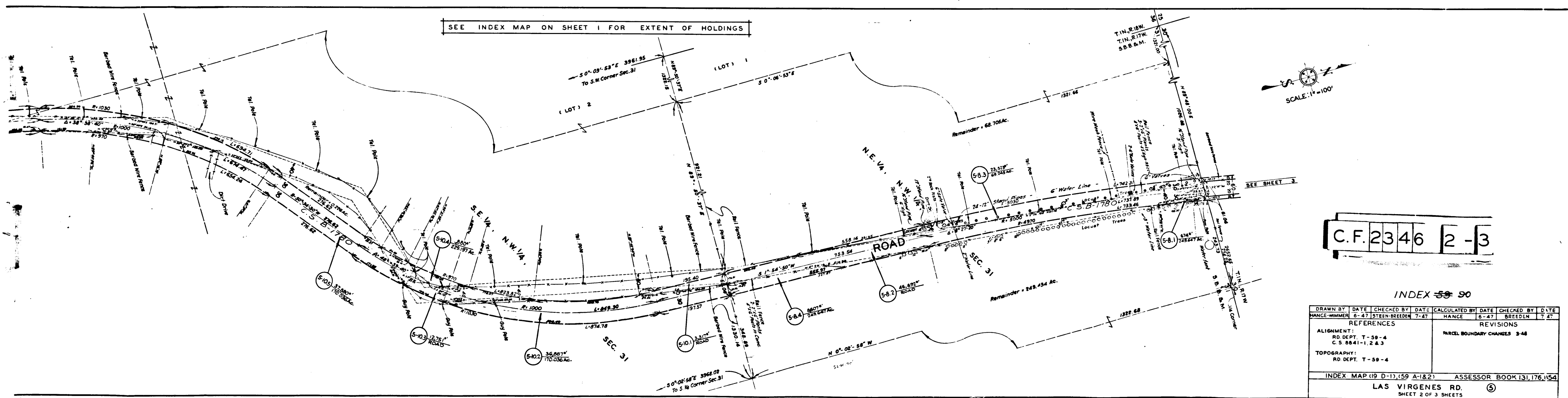
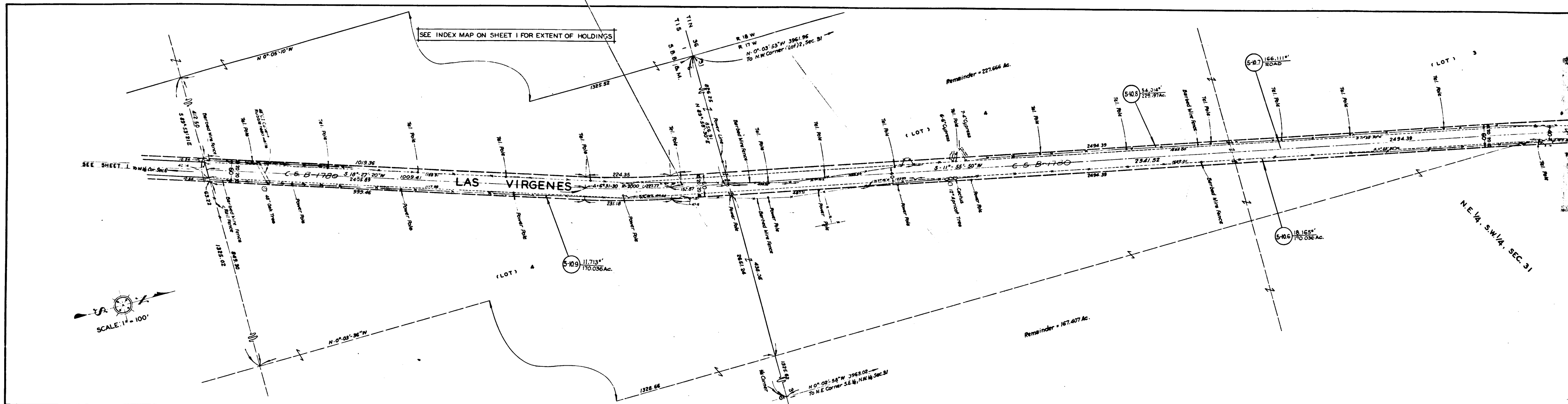
NOTE: SIDE LINES OF EXISTING DEEDED ROAD SHOWN THUS

EXHIBIT "A"
MAP SHOWING PROPERTY TO BE ACQUIRED FOR THE OPENING AND WIDENING OF
LAS VIRGENES ROAD
IN ACCORDANCE WITH A RESOLUTION OF THE BOARD OF SUPERVISORS OF LOS ANGELES COUNTY
ALFRED JONES COUNTY SURVEYOR
JULY 1947

LEGEND
NUMBERS IN CIRCLES REPRESENT PARCELS SOUGHT TO BE ACQUIRED
PORTIONS COLORED RED SHOW EASEMENTS SOUGHT TO BE ACQUIRED FOR HIGHWAY PURPOSES.
PORTIONS COLORED BLUE SHOW EASEMENTS SOUGHT TO BE ACQUIRED FOR HIGHWAY PURPOSES OVER LAND NOW USED FOR ROAD PURPOSES
GREEN
PORTIONS COLORED YELLOW SHOW EASEMENTS SOUGHT TO BE ACQUIRED FOR SLOPE PURPOSES.
AREAS OF PARCELS SOUGHT TO BE ACQUIRED SHOWN THUS:
00000 = AREA OF PARCEL IN SQUARE FEET.
000000 = AREA OF HOLDING IN ACRES OR SQUARE FEET.

DRAWN BY	DATE	CHECKED BY	DATE	CALCULATED BY	DATE	CHECKED BY	DATE
HANCE-WIMMER	5-47	STEIN-BERDEN	8-47	HANCE	6-27	INSPECKER	8-47
REFERENCES				REVISIONS			
ALIGNMENT: RD. DEPT. T-59-4 C.S. 8841-1, 2 & 3				PARCEL BOUNDARY CHANGES 3-48			
TOPOGRAPHY: RD. DEPT. T-59-4							
INDEX MAP (9 D-1), (59 A 1 & 2)				ASSESSOR BOOK 131, 176, 854			
LAS VIRGENES ROAD				5			
SHEET 1 OF 3 SHEETS							

Case No. 191948
Los Angeles
et al.
Parcels
in red, blue and green as
this sheet and sheets
Order authorizing
take immediate posse
to parcels: 5-3, 5-4B, 5-4C,
5-51, 5-52, 5-81, 5-82, 5-
and 5-114 rendered July
Case dismissed as to Parcels
5-95, 5-96, 5-101 to 5-103.
Case dismissed as to Parcels
to 5-84 and 5-114. Novel
Final Judgment in favor
to par. 5-11 & 5-12 rendered
E. 92, 244, O.R. 30620
Final Judgment in favor
as to par. 5-4A, 5-4A2,
5-4B, 5-51, 5-52, 5-6A,
5-6A3, 5-6B, 5-7A, 5-7B,
5-12, 1, 5-122, 5-123, 5-1
5-125, 2 rendered July
E. 111-108, O.R. 39753
Final Judgment in favor
to (parcel 1) 5-3 rendered
E. 124-172, O.R. 40450-4

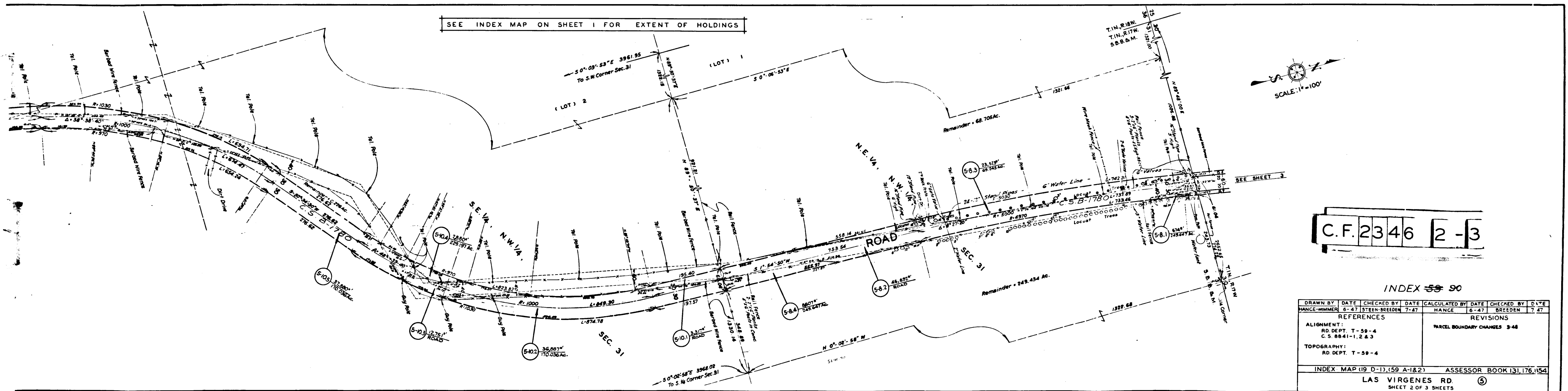
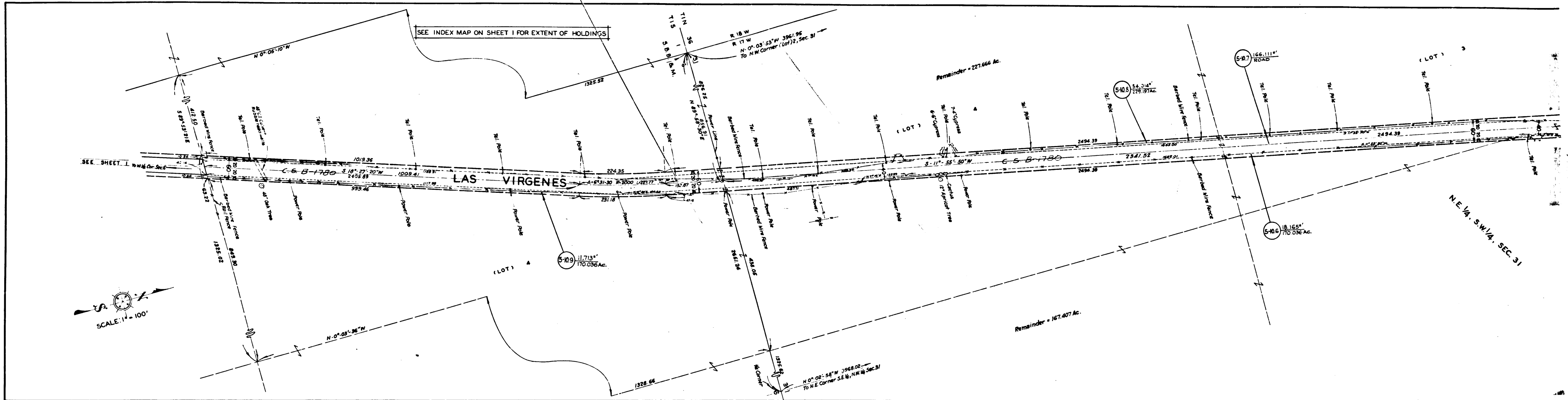


C.F. 2346 2-3

INDEX 59 90

DRAWN BY RANGE NUMBER 6-47 STEEN-BREEDEN 7-47	CHECKED BY RANGE 6-47 BREEDEN 7-47	CALCULATED BY RANGE 6-47 BREEDEN 7-47	DATE 7-47
REFERENCES		REVISIONS	
ALIGNMENT: RD DEPT. T-59-4 C.S. 8841-1, 2 & 3		PARCEL BOUNDARY CHANGES 3-48	
TOPOGRAPHY: RD DEPT. T-59-4			
INDEX MAP (19 D-1), (59 A-1 & 2) ASSESSOR BOOK 131, 176, 154			
LAS VIRGENES RD. SHEET 2 OF 3 SHEETS			

Super
Su
Count
M Loui
Suit co
in red
on this
For co
set - u



C.F. 2346 2-3

INDEX 59 90

DRAWN BY	DATE	CHECKED BY	DATE	CALCULATED BY	DATE	CHECKED BY	DATE
HANCE-WIMMER	6-47	STEEN-BREEDEN	7-47	HANCE	6-47	BREEDEN	7-47
REFERENCES				REVISIONS			
ALIGNMENT: RD. DEPT. T-59-4 C.S. 8841-1, 2 & 3				PARCEL BOUNDARY CHANGES 3-48			
TOPOGRAPHY: RD. DEPT. T-59-4							
INDEX MAP (19 D-1), (59 A-1 & 2) ASSESSOR BOOK 131, 176, 154							
LAS VIRGENES RD SHEET 2 OF 3 SHEETS							

Super
Sun
County
M. Louis
Suit co
in red,
on this
For com
set - u

CF 2346

3 OR D3947

3 POR SEC 30 TIN R17W

LAS VIRGENES RD 15