

Superior Court Case No. 601602  
 Suit for Condemnation  
 Filed July 11, 1952  
 County of Los Angeles, Plff.  
 vs.  
 Frank F. Pellissier & Sons, Inc., et al, Defts  
 Order authorizing Plff. to take Immediate Possession of par. 9-15-52  
 Final Judgment in favor of Plff. as to par. 16-1, rendered Dec. 2, 1952  
 E: 124-174, O.R. 40480-216

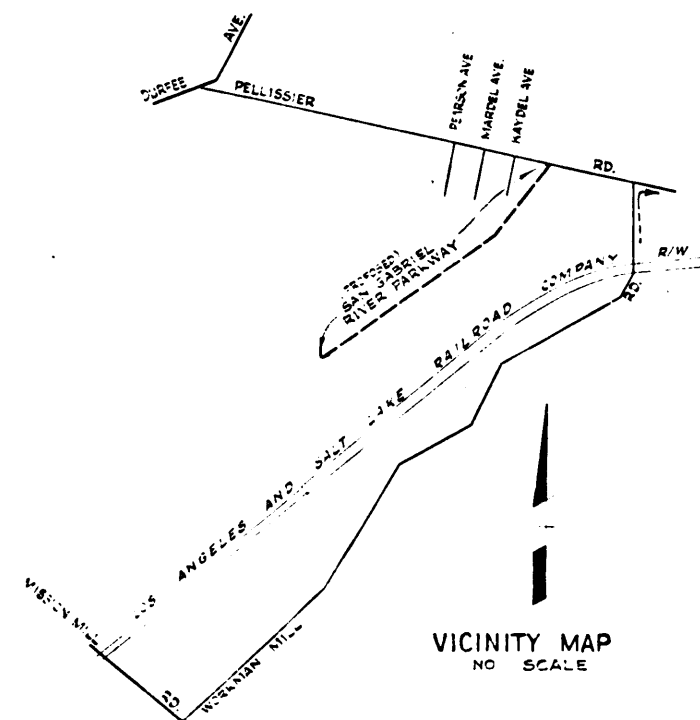
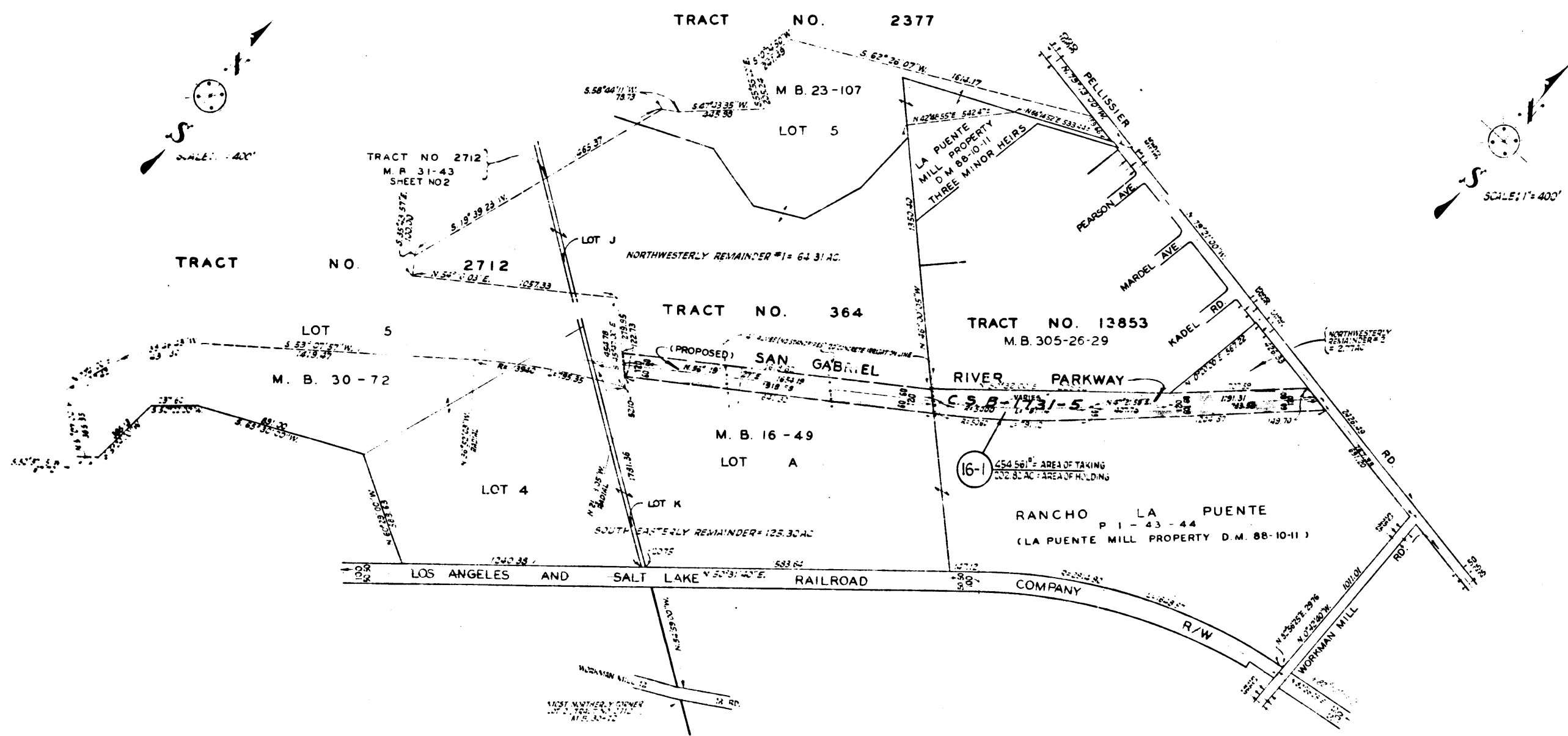


EXHIBIT "A"  
 MAP SHOWING PROPERTY TO BE ACQUIRED  
 FOR THE OPENING  
 OF  
 SAN GABRIEL RIVER PARKWAY

WILLIAM J. FOX COUNTY SURVEYOR  
 OCTOBER 1951

LEGEND  
 NUMBER IN CIRCLE REPRESENTS PARCEL SOUGHT TO BE ACQUIRED.  
 PORTION COLORED RED SHOWS EASEMENT SOUGHT TO BE ACQUIRED  
 FOR HIGHWAY PURPOSES.

DRAWN BY	DATE	CHECKED BY	DATE	CALCULATED BY	DATE	CHECKED BY	DATE
WINNER	10-51	THOMPSON	10-51	WINNER	10-51	SILVERMAN	10-51
REFERENCES				REVISIONS			
ALIGNMENT: C.S.B-1731-5				THIS MAP REWAS PER REALIGNMENT ON C.S.B-1731-5 REVISED TO CONDEMNATION CASE NO. 601602			
TOPOGRAPHY: FB 4485-224							
J.N. DEES J.A. 2-280							
INDEX MAP 37(C-2,3)				ASSESSOR BOOK 849-1			
SAN GABRIEL RIVER PARKWAY (16)							
ONE SHEET							

INDEX 37

C.F. 2364 -