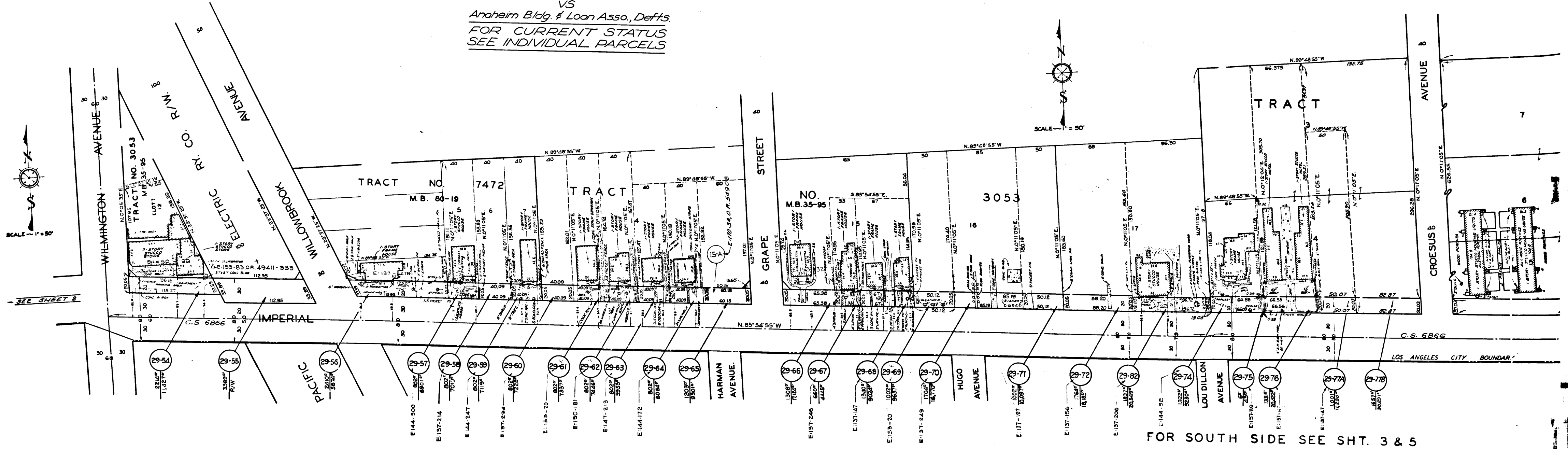
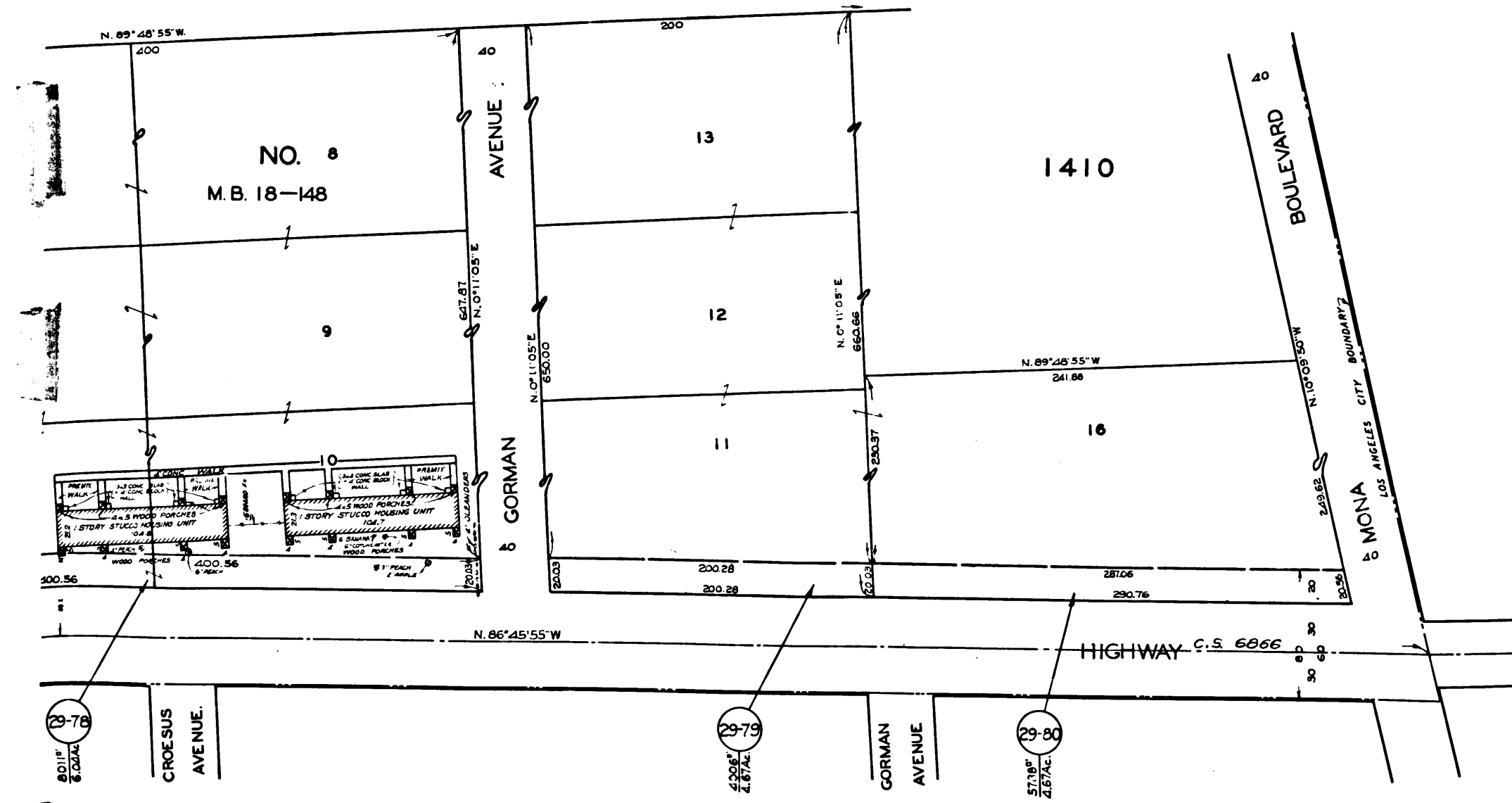


Superior Court Case No. 643001
 Suit for Condemnation
 Filed April 19, 1955
 City of Los Angeles, Plaintiff
 VS
 Anaheim Bldg. & Loan Asso., Defts.
 FOR CURRENT STATUS
 SEE INDIVIDUAL PARCELS



FOR SOUTH SIDE SEE SHT. 3 & 5



MAP SHOWING PROPERTY TO BE ACQUIRED
 FOR THE WIDENING
 OF

IMPERIAL HIGHWAY

WILLIAM J. FOX COUNTY SURVEYOR

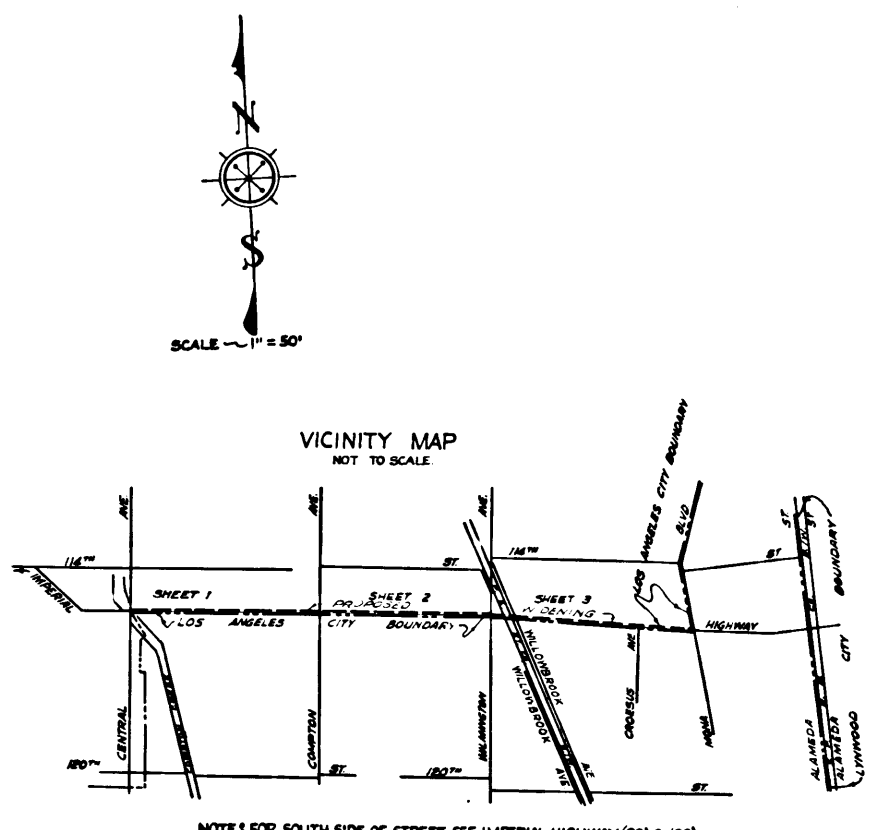
FEBRUARY 1953

LEGEND

NUMBERS IN CIRCLES REPRESENT PARCELS SOUGHT TO BE ACQUIRED.
 PORTIONS COLORED RED SHOW EASEMENTS SOUGHT TO BE ACQUIRED
 FOR HIGHWAY PURPOSES.

AREAS OF PARCELS SOUGHT TO BE ACQUIRED SHOWN
 THUS: 0000 = AREA OF PARCEL IN SQUARE FEET.
 00000 = AREA OF HOLDING IN SQUARE FEET OR ACRES.

DRAWN BY	DATE	CHECKED BY	DATE	CALCULATED BY	DATE	CHECKED BY	DATE
R.T. & J.T.	1-53	SLAVIN	2-53	SAUNDERS	1-53	THOMPSON	1-53
REFERENCES				REVISIONS			
ALIGNMENT: C.S.B. 1490-2				REVISED PARCEL 77 TO 77A & 77B PARTIAL PARCEL 75 REVISED TO PARCEL 88 2-27-53			
TOPOGRAPHY: F.B. 1190-355 to 368 INCL.							
J.N. 0884							
INDEX MAP 26(C-D-2)				ASSESSOR BOOKS 599 & 615			
IMPERIAL HIGHWAY (28) & (29) (NORTH SIDE)				SHEET 3 OF 3 SHEETS			



NOTES FOR SOUTH SIDE OF STREET SEE IMPERIAL HIGHWAY (28) & (29)

I.M.26

C.F. 2397 4-5