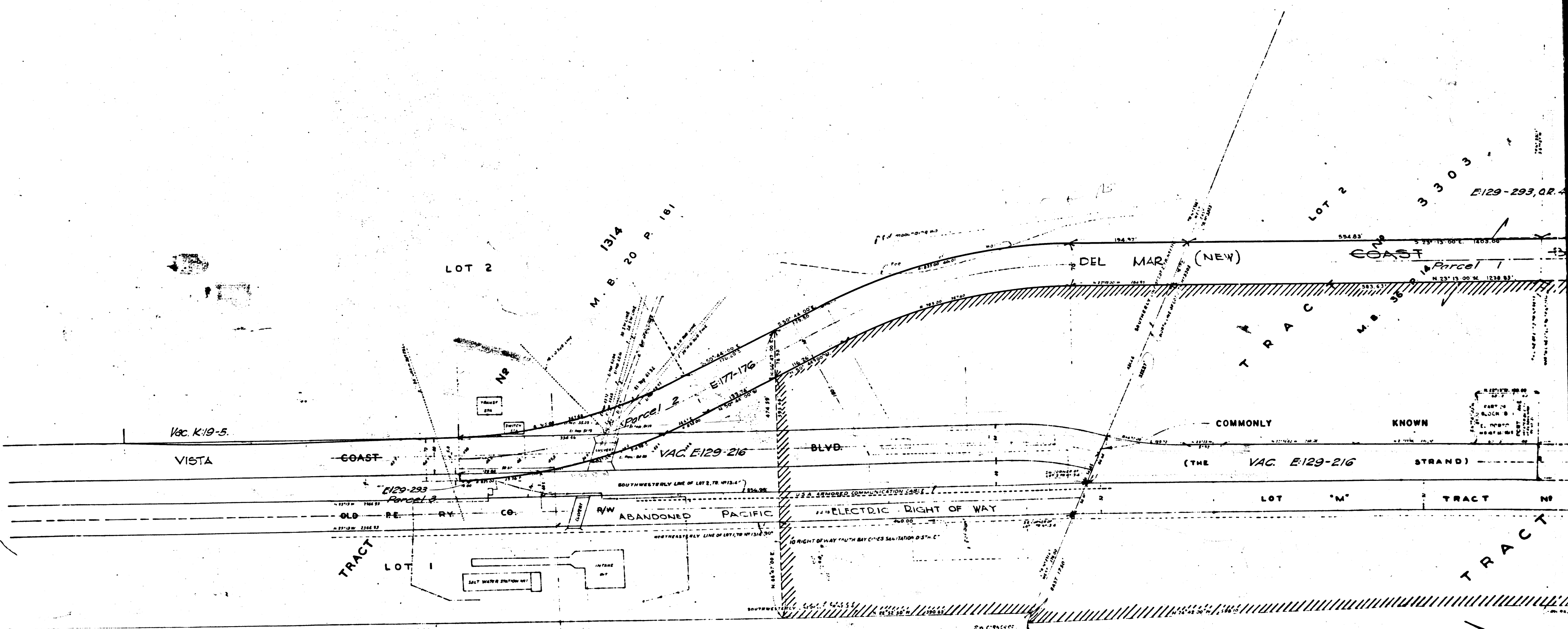


Superior Court Case No. 622406  
 Suit for Condemnation  
 Filed Dec. 14, 1953  
 Southern Calif. Edison Company, Plaintiff  
 vs.  
 County of Los Angeles, Defendants

NOTE  
 The County of L. A. is the Defendant  
 Final Judgment in favor of Plaintiff  
 (The Sa Calif. Edison Co.) rendered 6-6-54  
 E-136-194



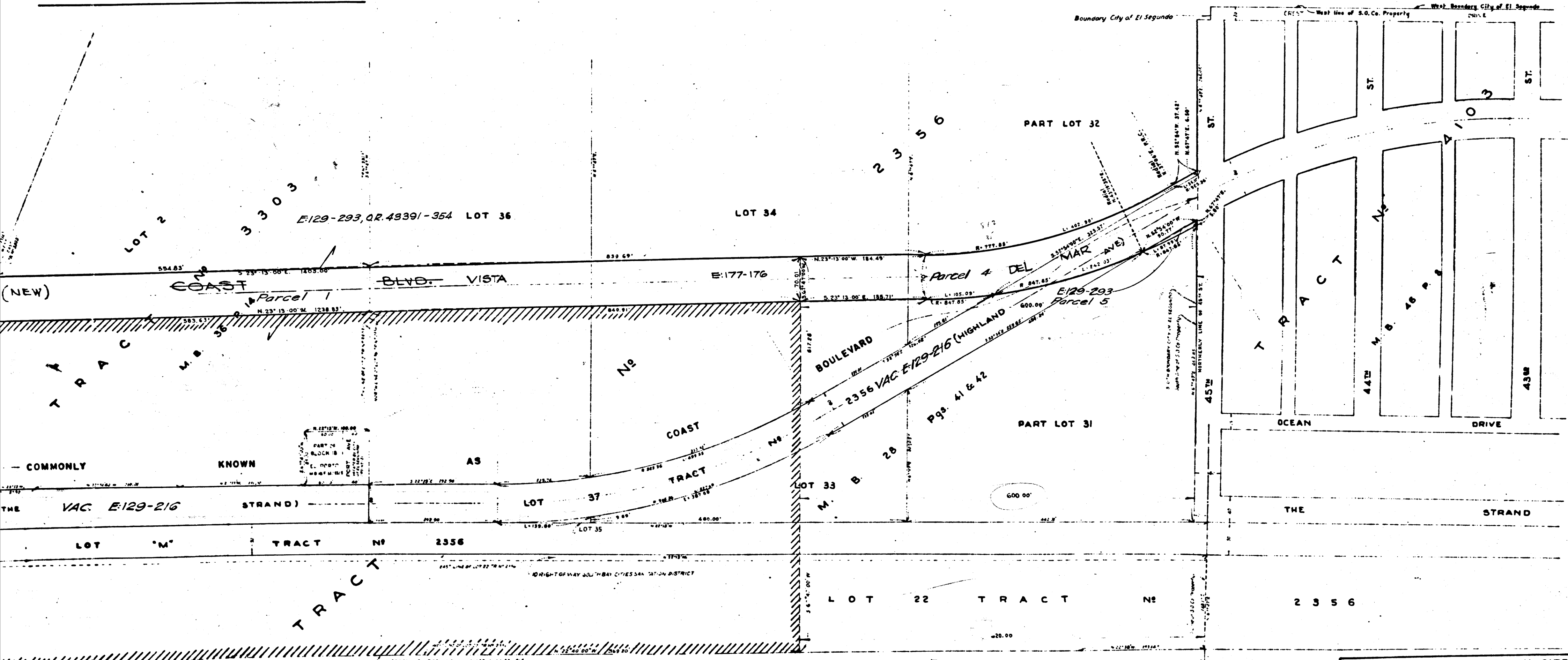
p a c i f i c

	C.F.	2	4	1	2	
	A	1	OF	A	2	

o c e

Superior Court Case No. 622406  
 Suit for Condemnation  
 Filed Dec. 14, 1953  
 Southern Calif. Edison Company, Pltff.  
 vs.  
 County of Los Angeles, Defendants

NOTE  
 The County of L. A. is the Defendant  
 Final Judgment in favor of Plaintiff  
 (The S. Calif. Edison Co.) rendered 6-6-54  
 E:136-194



- LEGEND —
- = Proposed Electric Generating Plant Site of Southern California Edison Company
  - = Strip of land formerly comprising a portion of a public road called Coast Blvd., now vacated, and which is claimed by the County of Los Angeles.
  - = Portion of the strip of land claimed by the County of Los Angeles, which is to be acquired for Electric Generating Plant. (S.C.C. 622406)
  - = Proposed (New) Coast Blvd.

**EL SEGUNDO STEAM STATION SITE**  
 Map showing lands to be condemned for  
 portion of the El Segundo Steam Station  
 Site of Southern California Edison Company  
 CITY OF EL SEGUNDO  
 LOS ANGELES COUNTY  
 SOUTHERN CALIFORNIA EDISON CO.

J. M. 23

C.F. 2412  
 A2 OF A2