

Superior Court Case No. 627817
 Suit for Condemnation
 Filed April 26, 1954
 County of Los Angeles, Plaintiff.
 VS
 Morris R. Hasson, et al, Defendants
**FOR CURRENT STATUS
 SEE INDIVIDUAL PARCELS**

EXHIBIT "A"
 MAP SHOWING PROPERTY TO BE ACQUIRED
 FOR THE WIDENING
 OF

SANTA FE AVENUE

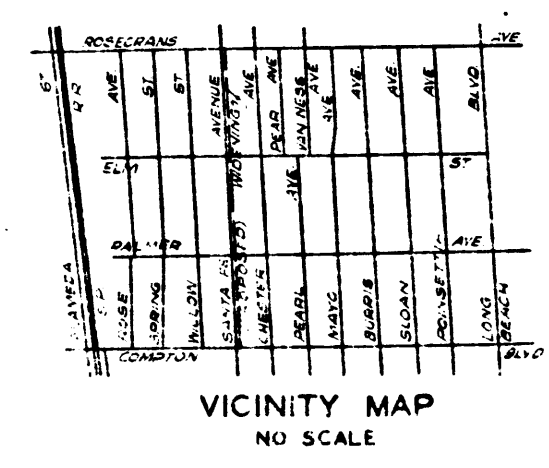
WILLIAM J. FOX COUNTY SURVEYOR
 APRIL 1953

LEGEND

NUMBERS IN CIRCLES REPRESENT PARCELS SOUGHT TO BE ACQUIRED.
 PORTIONS COLORED RED SHOW PROPERTIES SOUGHT TO BE ACQUIRED
 FOR HIGHWAY PURPOSES.

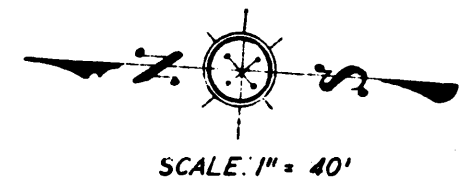
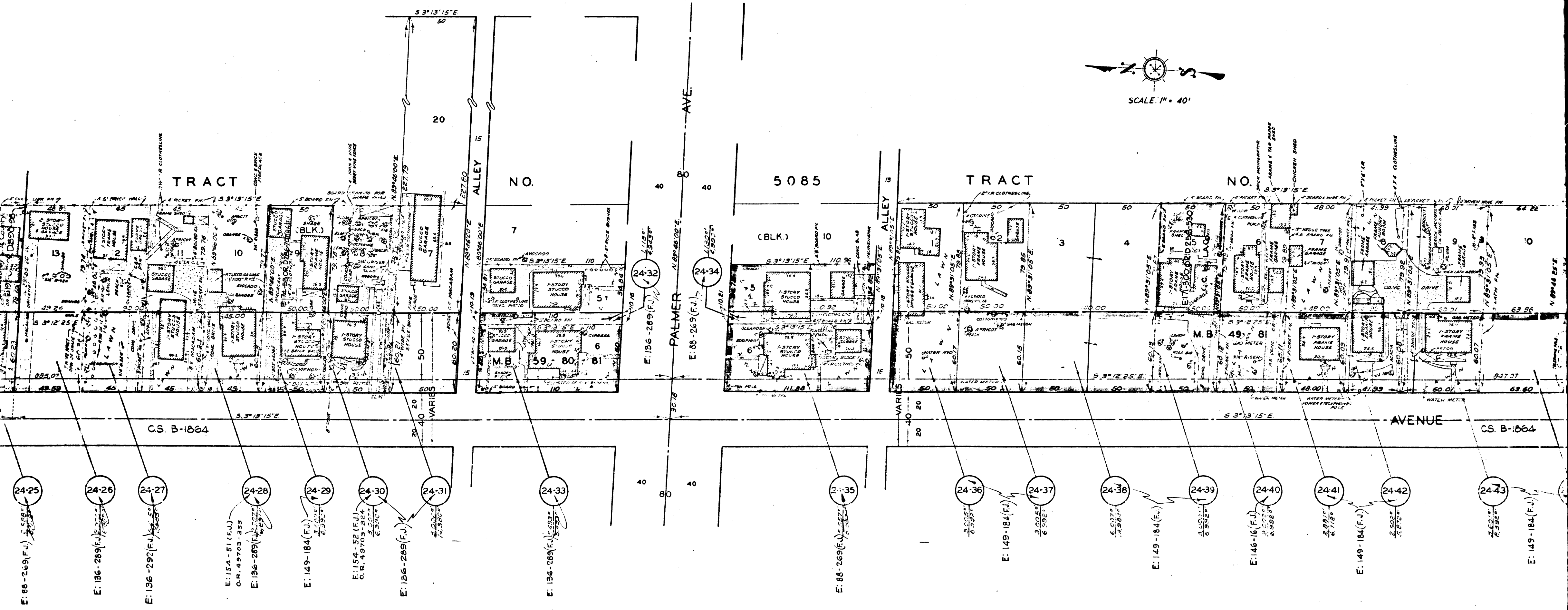
AREAS OF PARCELS SOUGHT TO BE ACQUIRED SHOWN
 0000 = AREA OF PARCEL IN SQUARE FEET.
 THUS 00000 = AREA OF HOLDING IN SQUARE FEET.

DRAWN BY	DATE	CHECKED BY	DATE	CALCULATED BY	DATE	CHECKED BY	DATE
SAUNDERS	3-53	SLAVIN	4-53	SAUNDERS	3-53	THOMPSON	3-53
REFERENCES				REVISIONS			
ALIGNMENT: C.S. B-1864							
TOPOGRAPHY: F.B. 1231-74 TO 78, 86 TO 111 F.B. 916-209 TO 220 F.B. 278-27-28 & 30							
J.N.R-765							
INDEX MAP 32 (A-4)				ASSESSOR BOOK 893			
SANTA FE AVENUE (24)							
ONE SHEET							



I.M.32

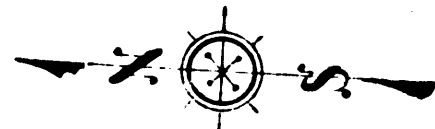
C.F. 2420-



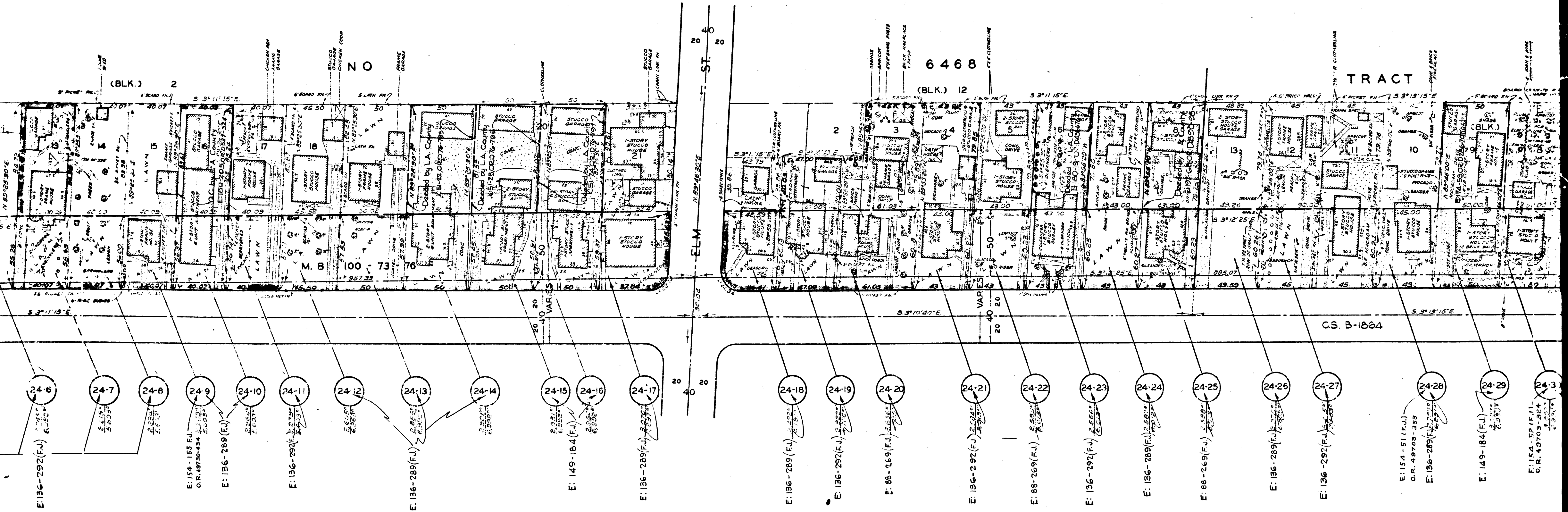
- 24-25 E: 86-269 (F.J.) 5.588°
- 24-26 E: 136-289 (F.J.) 7.252°
- 24-27 E: 136-290 (F.J.) 7.252°
- 24-28 E: 154-51 (F.J.) C.R. 4.9703-333 E: 136-289 (F.J.) 7.252°
- 24-29 E: 149-184 (F.J.) 2.502°
- 24-30 E: 154-52 (F.J.) C.R. 4.9703-324 E: 136-289 (F.J.) 7.252°
- 24-31 VARIE 2.202° 7.3302°
- 24-33 E: 136-289 (F.J.) 5.588°
- 24-35 E: 86-269 (F.J.) 5.588°
- 24-36 3.002° 6.592°
- 24-37 E: 149-184 (F.J.) 2.502° 6.592°
- 24-38 5.032° 7.592°
- 24-39 E: 149-184 (F.J.) 2.502° 6.592°
- 24-40 E: 146-16 (F.J.) 2.002° 6.592°
- 24-41 2.882° 6.712°
- 24-42 E: 149-184 (F.J.) 2.502° 6.592°
- 24-43 2.502° 6.592°
- E: 149-184 (F.J.) 2.502°

2

C.F. 2420-



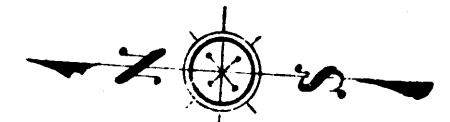
SCALE: 1" = 40'



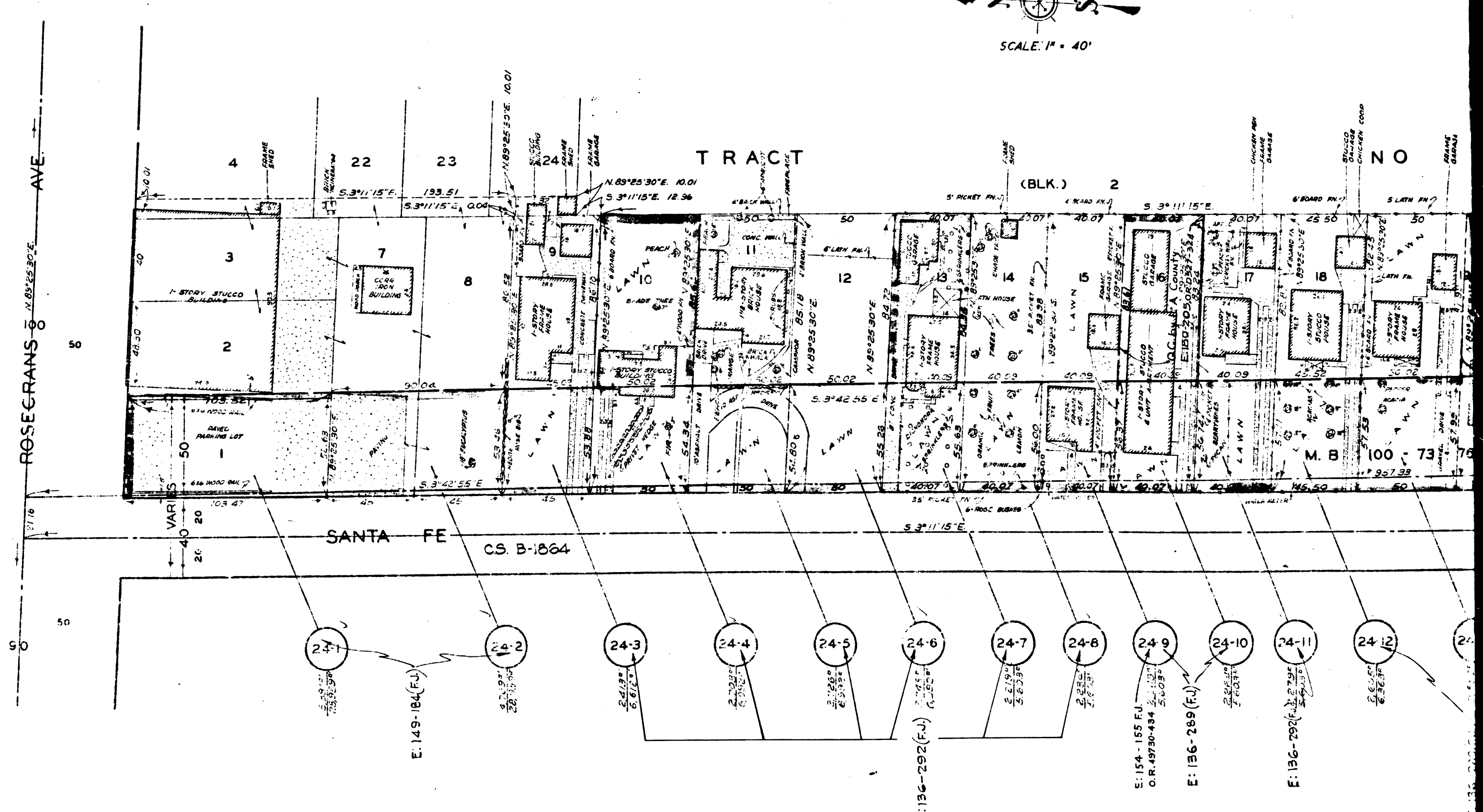
- 24-6 E: 136-292(F.J.)
- 24-7
- 24-8
- 24-9 E: 154-155 F.U. O.R. 49730-434
- 24-10 E: 136-289 (F.J.)
- 24-11 E: 136-292(F.J.)
- 24-12
- 24-13 E: 136-289(F.J.)
- 24-14
- 24-15
- 24-16 E: 149-184 (F.J.)
- 24-17 E: 136-289(F.J.)
- 24-18 E: 136-289 (F.J.)
- 24-19 E: 136-292(F.J.)
- 24-20 E: 88-269 (F.J.)
- 24-21 E: 136-292(F.J.)
- 24-22 E: 88-269(F.J.)
- 24-23 E: 136-292(F.J.)
- 24-24 E: 136-289(F.J.)
- 24-25 E: 88-269(F.J.)
- 24-26 E: 136-289(F.J.)
- 24-27 E: 136-292(F.J.)
- 24-28 E: 154-51 (F.U.) O.R. 49703-359
- 24-29 E: 149-184 (F.J.)
- 24-30 E: 154-52 (F.U.) O.R. 49703-324

3

C.F. 2420 -



SCALE: 1" = 40'



4

C.F. 2420-