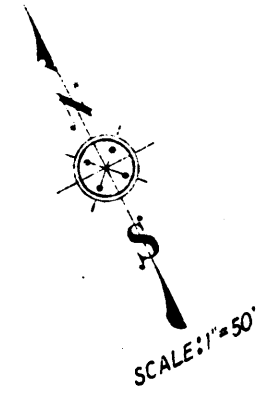
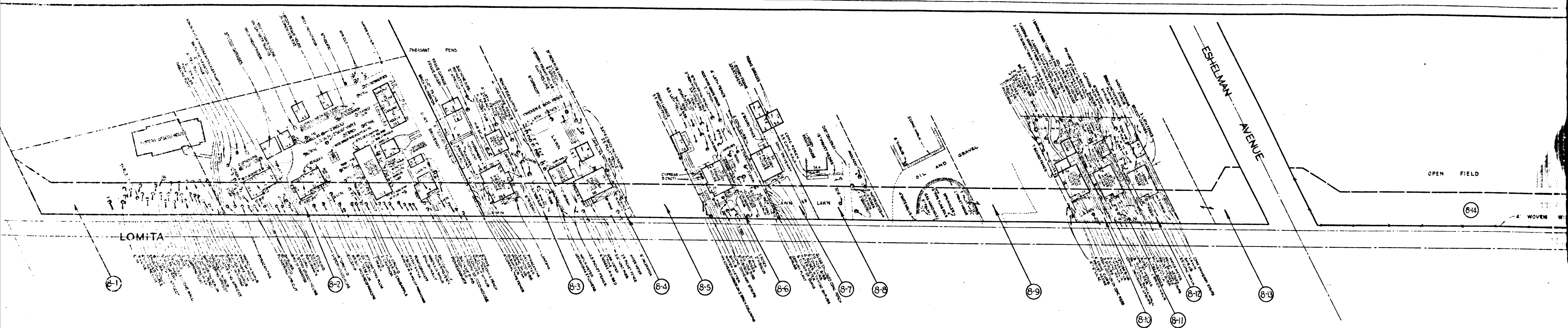


Superior Court Case No. 635518
 Suit for Condemnation
 Filed Oct 26, 1954
 County of Los Angeles, Plaintiff
 VS
 Alice M Ueda, et al, Defendants
 FOR CURRENT STATUS
 SEE INDIVIDUAL PARCELS



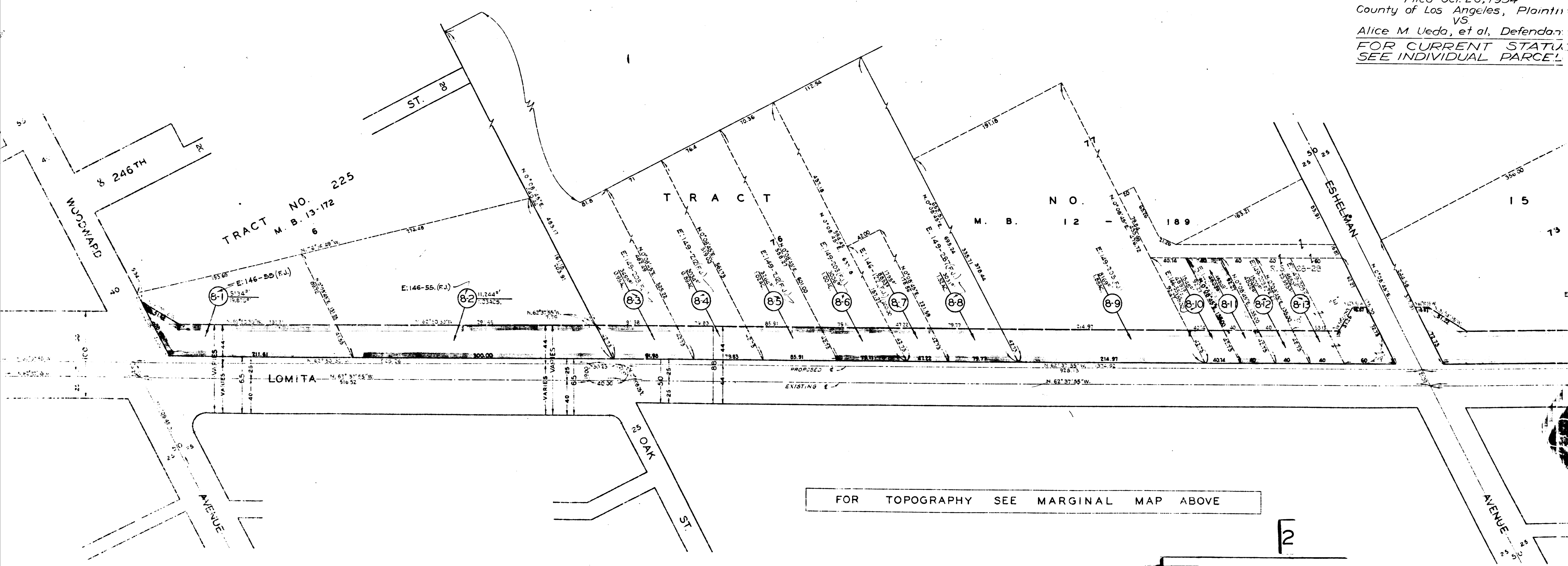
DRAWN BY	DATE	CHECKED BY	DATE	CALCULATED BY	DATE	CHECKED BY	DATE
WINNER	5-54	CURRAN	5-54	WINNER	7-54	THOMPSON	8-54
REFERENCES				REVISIONS			
ALIGNMENT C.S.B-680-3.2.2 (NOT FILED 10/5/54)							
TOPOGRAPHY: F.B. 995-113-213 F.B. 1537-76-40 APPRAISERS SKETCHES							
J.M. 0902 19							
INDEX MAP 28 (A-3)				ASSESSOR BOOKS 315, 522-2 & 718			
L.M. 28							
LOMITA BOULEVARD (8)							
SHEET 2 OF 2 SHEETS							

C.F. 2422 2-2



MARGINAL MAP SHOWING TOPOGRAPHY
SCALE 1" = 50'

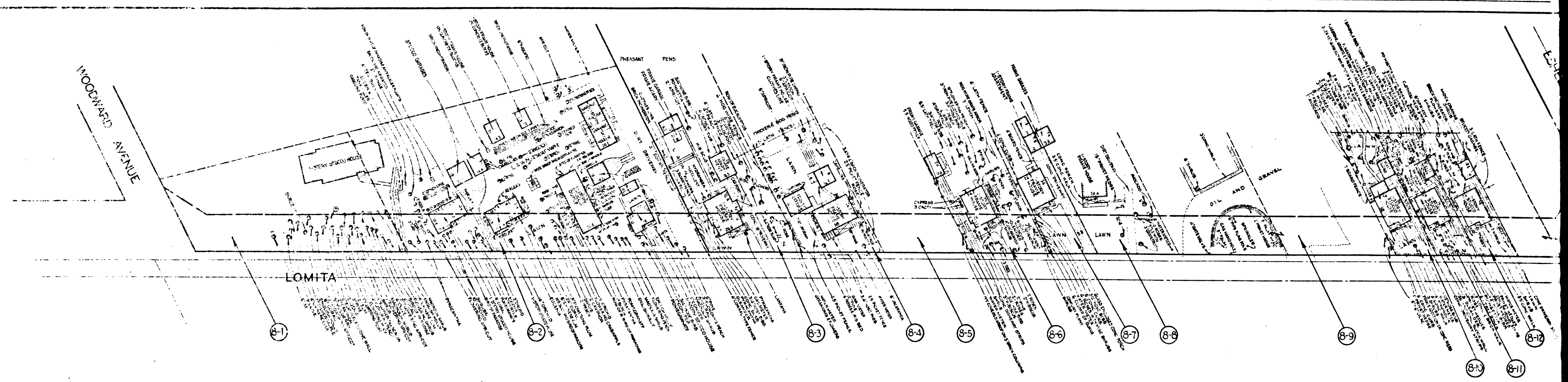
Superior Court Case No. 63551
 Suit for Condemnation
 Filed Oct. 26, 1954
 County of Los Angeles, Plaintiff
 VS
 Alice M. Ueda, et al, Defendant
FOR CURRENT STATUS
SEE INDIVIDUAL PARCELS



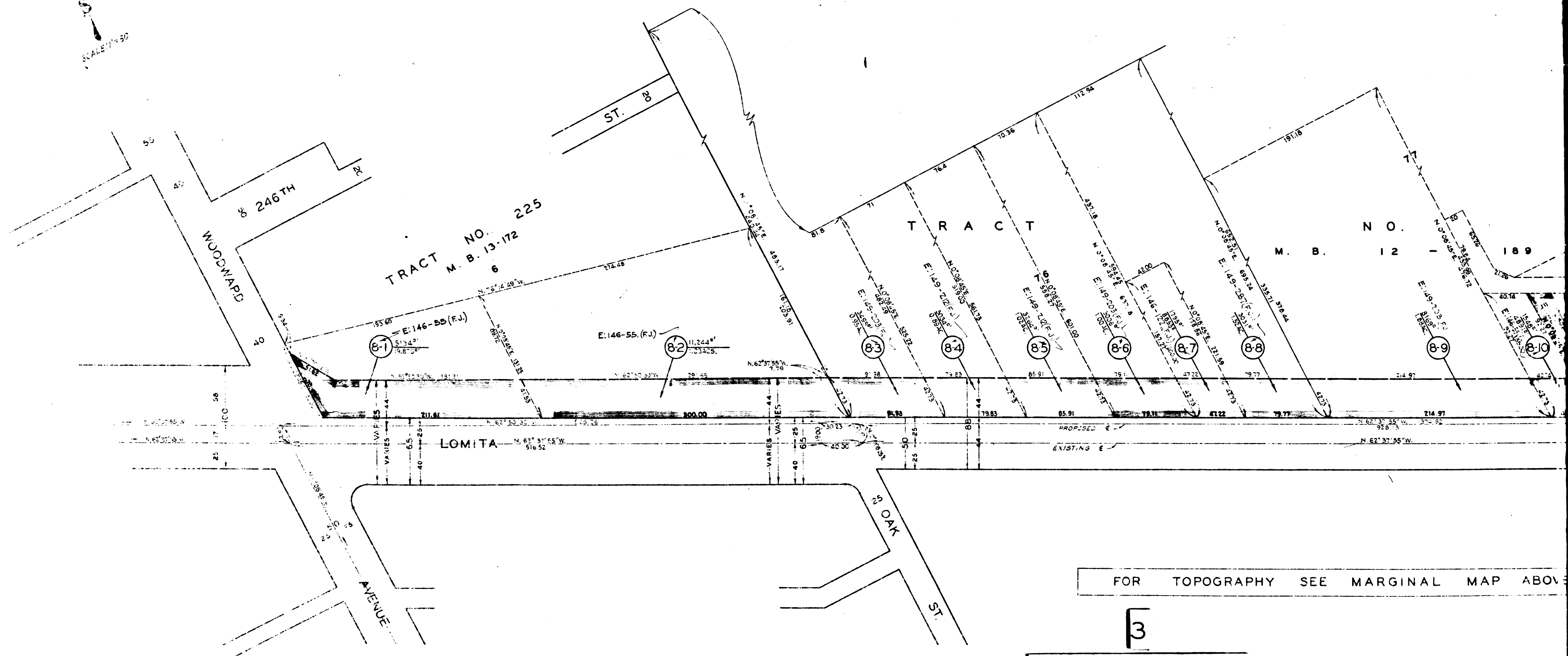
FOR TOPOGRAPHY SEE MARGINAL MAP ABOVE

2

C.F. 2422 2-2



MARGINAL MAP SHOWING TOPO
SCALE 1" = 50'



FOR TOPOGRAPHY SEE MARGINAL MAP ABOVE

3

C.F. 2422 2-2