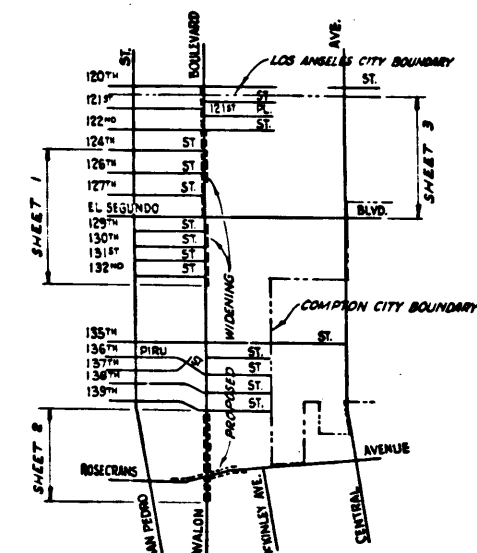
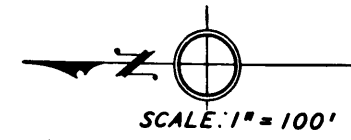
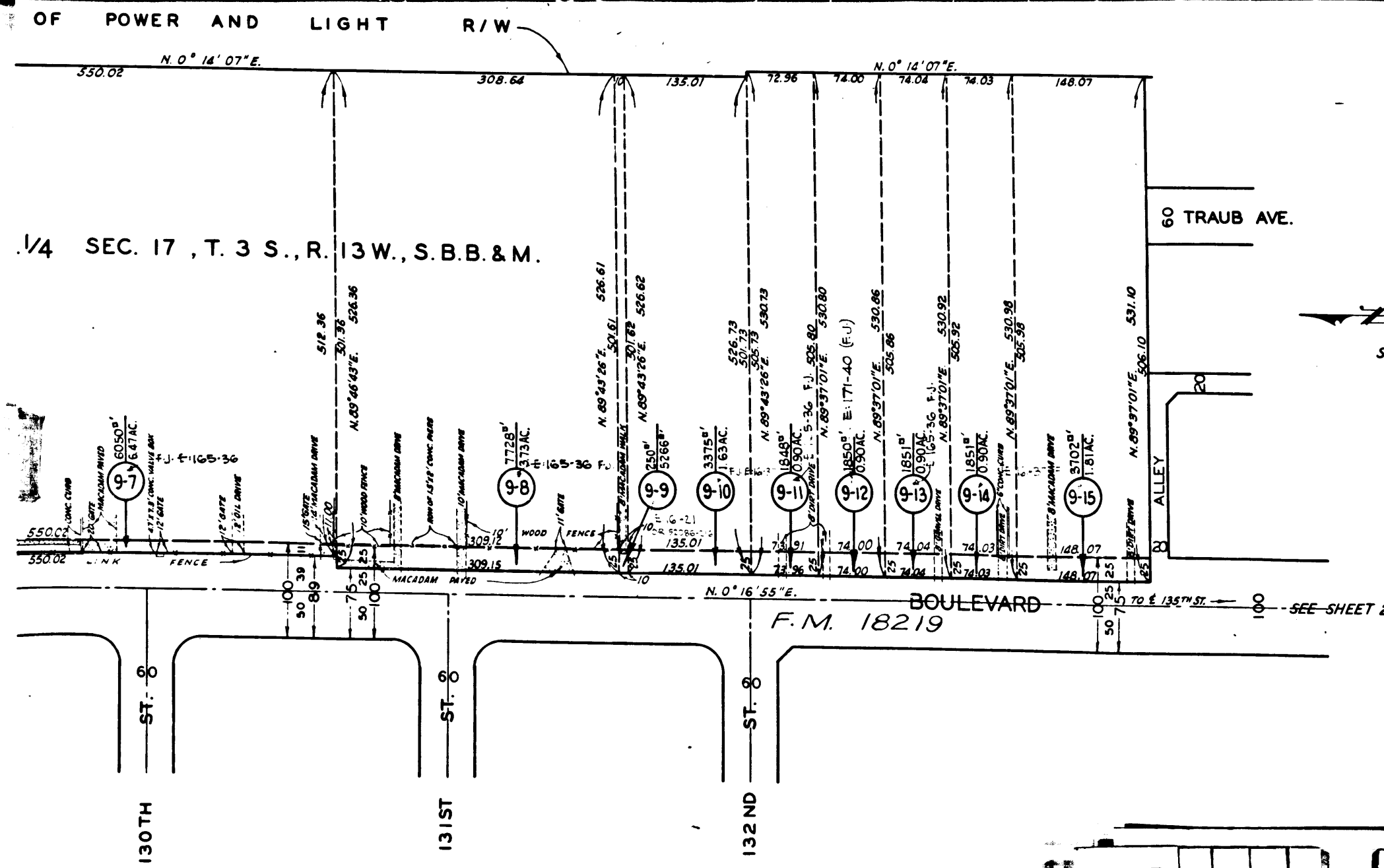


Superior Court Case No. 649878
 Suit for Condemnation
 Filed September 27, 1955
 County of Los Angeles Plaintiff
 vs
 General Petroleum Corp. et al. Deft.
**FOR CURRENT STATUS
 SEE INDIVIDUAL PARCELS**



VICINITY MAP
NOT TO SCALE

EXHIBIT "A"
MAP SHOWING PROPERTY SOUGHT TO BE ACQUIRED
FOR THE WIDENING
OF
AVALON AND ROSECRANS AVENUE
 WILLIAM J. FOX, COUNTY ENGINEER JULY, 1955
LEGEND
 NUMBERS IN CIRCLES REPRESENT PARCELS SOUGHT TO BE ACQUIRED.
 PARCELS FOR PROPOSED HIGHWAY EASEMENTS SHOWN IN RED.

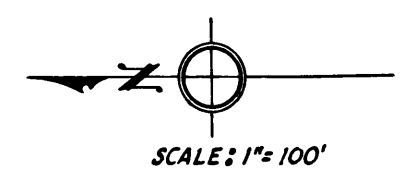
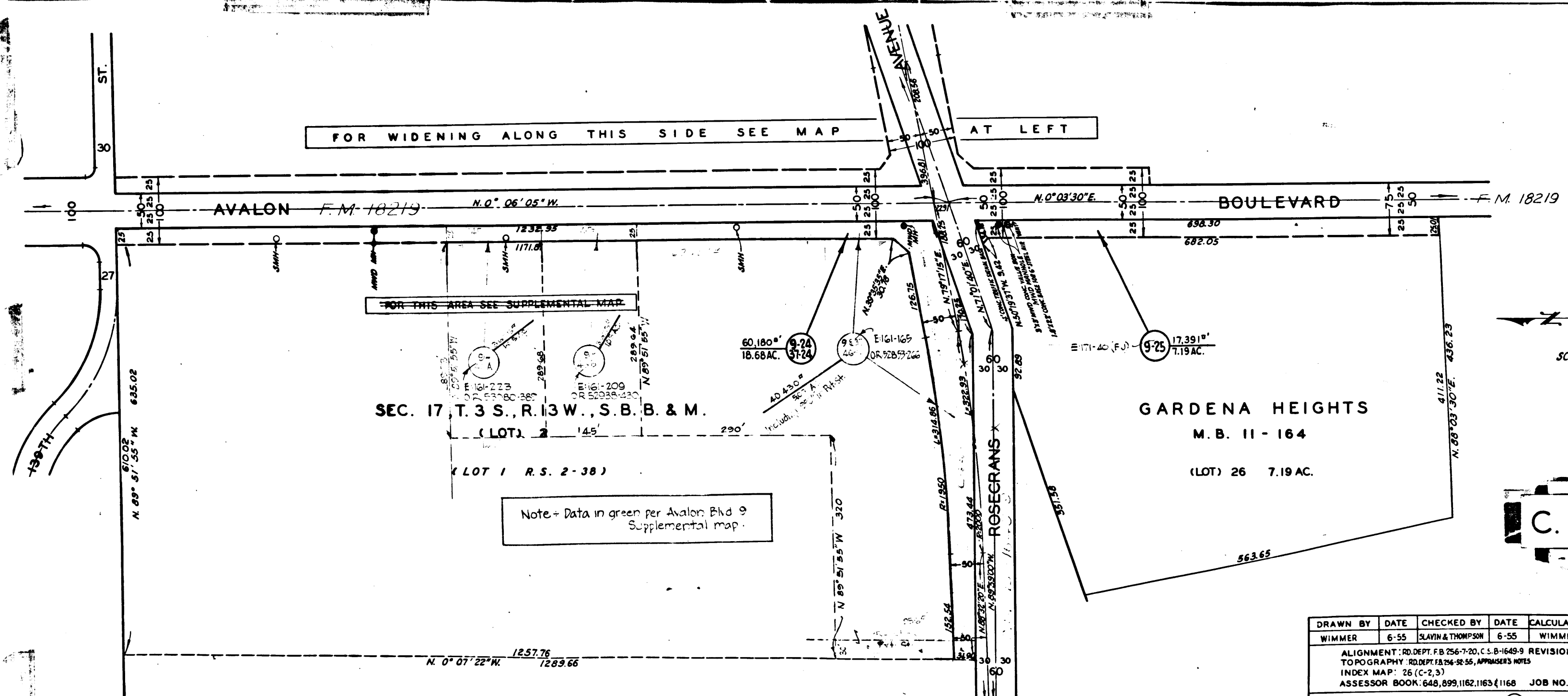
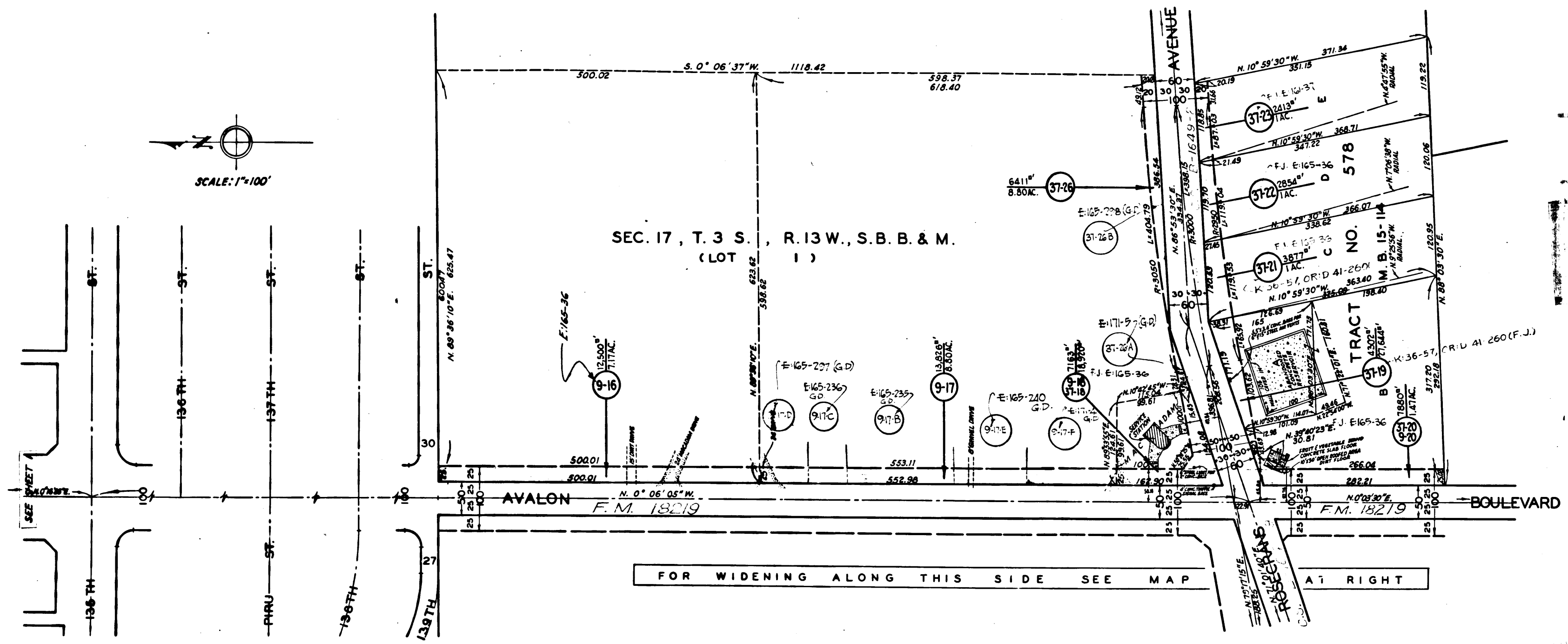
AREAS SHOWN THUS: 0000 = AREA OF PARCEL IN SQUARE FEET
 00000 = AREA OF HOLDING IN SQUARE FEET OR ACRES

DRAWN BY	DATE	CHECKED BY	DATE	CALCULATED BY	DATE	CHECKED BY	DATE
WIMMER	6-55	SLAVIN & THOMPSON	6-55	WIMMER	6-55	FARMER & THOMPSON	6-55

ALIGNMENT: RD. DEPT. FB. 256-720, CSB-1649-9 REVISIONS:
 TOPOGRAPHY: SD. DEPT. FB. 156-34-47, APPRAISERS NOTES
 INDEX MAP: 26 (C-2,3)
 ASSESSOR BOOK: 648, 699, 1162, 1163 & 1168 JOB NO. 0907.75

AVALON BOULEVARD (9) AND ROSECRANS AVENUE (37)
 SHEET 1 OF 3 SHEETS

C.F. 2439 1-3



C.F. 2439 2-3

DRAWN BY	DATE	CHECKED BY	DATE	CALCULATED BY	DATE	CHECKED BY	DATE
WIMMER	6-55	SLAVIN & THOMPSON	6-55	WIMMER	6-55	FARMER & THOMPSON	6-55

ALIGNMENT: RD. DEPT. FB 256-7-20, C.S.B-1649-9 REVISIONS: PAR (33) REVISED, SEE SUPPLEMENTAL MAP TO POGRAPHY. RD. DEPT. FB 256-92-55, APPRAISERS NOTES. RW. 3-56

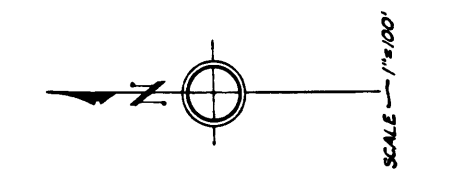
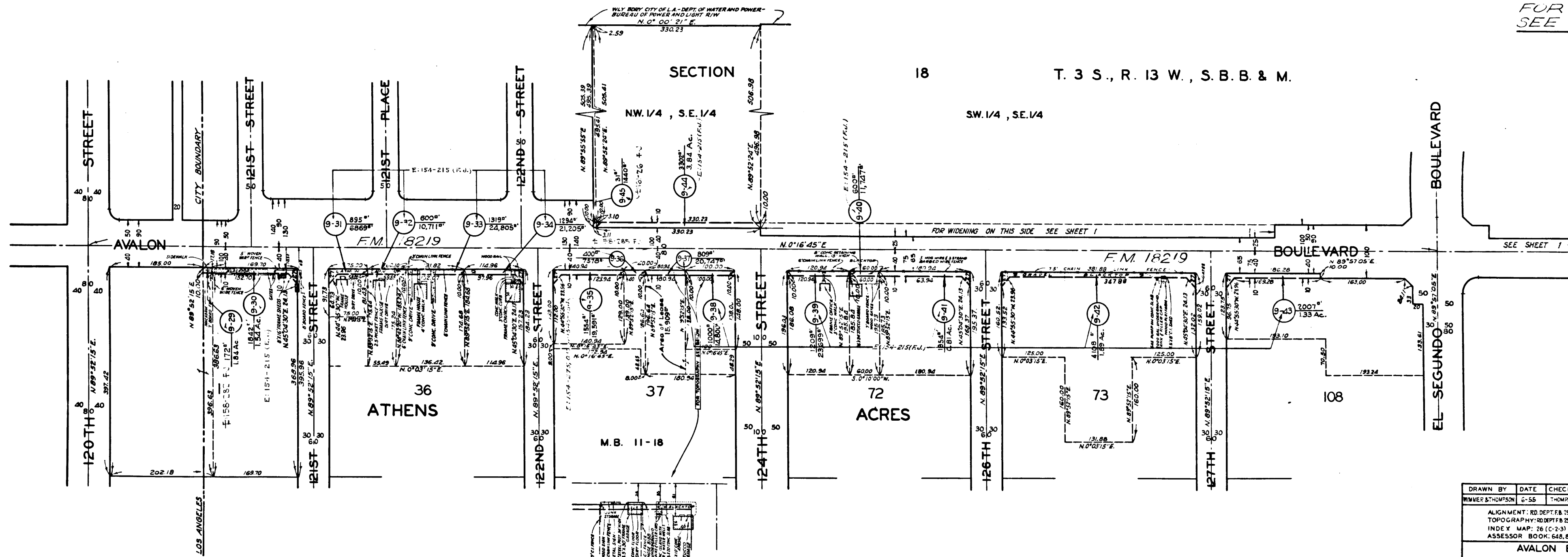
INDEX MAP: 26 (C-2,3)

ASSESSOR BOOK: 648, 899, 1162, 1163, 1168 JOB NO. 0907.75

AVALON BOULEVARD (9) AND ROSECRANS AVENUE (37)

SHEET 2 OF 3 SHEETS

Superior Court Case No. 649878
 Suit for Condemnation
 Filed September 27, 1955
 County of Los Angeles Plaintiff
 vs
 General Petroleum Corp., et al. Defs.
FOR CURRENT STATUS
SEE INDIVIDUAL PARCELS



DRAWN BY	DATE	CHECKED BY	DATE	CALCULATED BY	DATE	CHECKED BY	DATE
WINNETT & THOMPSON	6-55	THOMPSON WINNETT	6-55	W. W. VER & THOMPSON	6-55	THOMPSON WINNETT	6-55

ALIGNMENT: RD DEPT. FB 74-7-10, C.S.B. 1-649-9
 TOPOGRAPHY: 10 DEPT. FB 26-34-47, APPRAISERS NOTES
 INDEX MAP: 26 (C-2-3)
 ASSESSOR BOOK: 648, 899, 1163 & 1168
 JOB NO. 090775

AVALON BOULEVARD (9) AND ROSECRANS AVENUE (37)
 SHEET 3 OF 3 SHEETS

INDEX 26

C.F. 2439 3-3