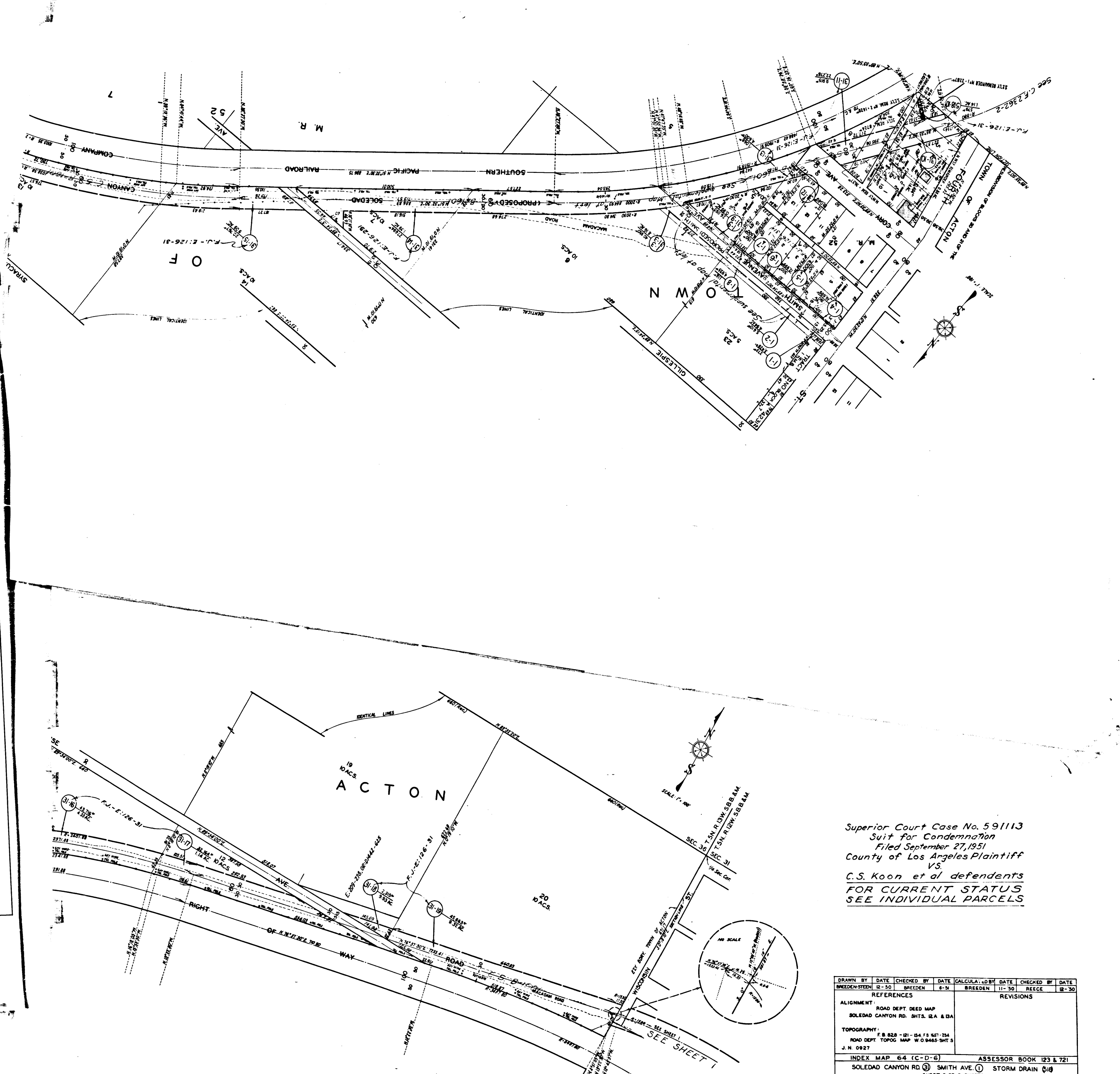
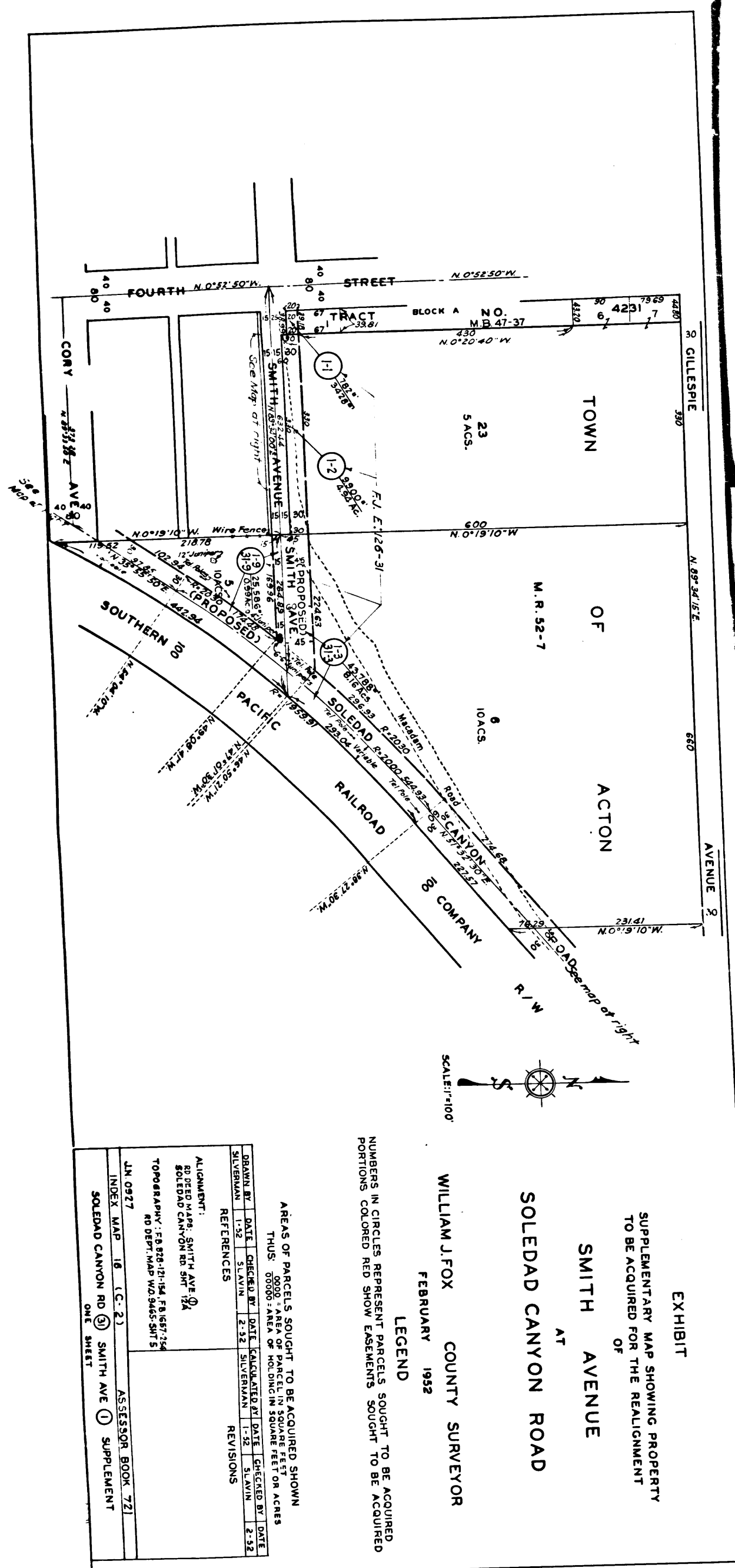


Superior Court Case No. 59113
 Suit for Condemnation
 Filed September 27, 1951
 County of Los Angeles Plaintiff
 v.s.
 C.S. Koon, et al defendants
 FOR CURRENT STATUS
 SEE INDIVIDUAL PARCELS

C.F. 2441 1-2



Superior Court Case No. 59113
 Suit for Condemnation
 Filed September 27, 1951
 County of Los Angeles Plaintiff
 vs.
 C.S. Koon et al defendants
 FOR CURRENT STATUS
 SEE INDIVIDUAL PARCELS

DRAWN BY	DATE	CHECKED BY	DATE	CALCULATED BY	DATE	CHECKED BY	DATE
BREEDEN	8-30	BREEDEN	8-30	BREEDEN	11-30	REECE	8-30
REFERENCES				REVISIONS			
ALIGNMENT: ROAD DEPT DEED MAP SOLEDAD CANYON RD. SHTS. 62A & 62B							
TOPOGRAPHY: F.B. 828-02-04/75 657-134 ROAD DEPT TOPOG. MAP W.O. 8465-SHT 5 J.N. 0927							
INDEX MAP 64 (C-D-6)				ASSESSOR BOOK 123 & 721			
SOLEDAD CANYON RD. (1) SMITH AVE. (1) STORM DRAIN (1)				SHEET 2 OF 2 SHEETS			

C.F. 2441 2-2