

Note: Data added in blue ink affecting parcels 15-2, 15-3, 15-4, 15-5, 15-6, 15-7, 15-8, 15-9, 15-10, 15-11, 15-12, 15-13, 15-14, 15-15, 15-16, 15-17, 15-18, 15-19, 15-20, 15-21, 15-22, 15-23, 15-24, 15-25, 15-26, 15-27, 15-28, 15-29, 15-30, 15-31, 15-32, 15-33, 15-34, 15-35, 15-36, 15-37, 15-38, 15-39, 15-40, 15-41, 15-42, 15-43, 15-44, 15-45, 15-46, 15-47, 15-48, 15-49, 15-50, 15-51, 15-52, 15-53, 15-54, 15-55, 15-56, 15-57, 15-58, 15-59, 15-60, 15-61, 15-62, 15-63, 15-64, 15-65, 15-66, 15-67, 15-68, 15-69, 15-70, 15-71, 15-72, 15-73, 15-74, 15-75, 15-76, 15-77, 15-78, 15-79, 15-80, 15-81, 15-82, 15-83, 15-84, 15-85, 15-86, 15-87, 15-88, 15-89, 15-90, 15-91, 15-92, 15-93, 15-94, 15-95, 15-96, 15-97, 15-98, 15-99, 15-100, 15-101, 15-102, 15-103, 15-104, 15-105, 15-106, 15-107, 15-108, 15-109, 15-110, 15-111, 15-112, 15-113, 15-114, 15-115, 15-116, 15-117, 15-118, 15-119, 15-120, 15-121, 15-122, 15-123, 15-124, 15-125, 15-126, 15-127, 15-128, 15-129, 15-130, 15-131, 15-132, 15-133, 15-134, 15-135, 15-136, 15-137, 15-138, 15-139, 15-140, 15-141, 15-142, 15-143, 15-144, 15-145, 15-146, 15-147, 15-148, 15-149, 15-150, 15-151, 15-152, 15-153, 15-154, 15-155, 15-156, 15-157, 15-158, 15-159, 15-160, 15-161, 15-162, 15-163, 15-164, 15-165, 15-166, 15-167, 15-168, 15-169, 15-170, 15-171, 15-172, 15-173, 15-174, 15-175, 15-176, 15-177, 15-178, 15-179, 15-180, 15-181, 15-182, 15-183, 15-184, 15-185, 15-186, 15-187, 15-188, 15-189, 15-190, 15-191, 15-192, 15-193, 15-194, 15-195, 15-196, 15-197, 15-198, 15-199, 15-200, 15-201, 15-202, 15-203, 15-204, 15-205, 15-206, 15-207, 15-208, 15-209, 15-210, 15-211, 15-212, 15-213, 15-214, 15-215, 15-216, 15-217, 15-218, 15-219, 15-220, 15-221, 15-222, 15-223, 15-224, 15-225, 15-226, 15-227, 15-228, 15-229, 15-230, 15-231, 15-232, 15-233, 15-234, 15-235, 15-236, 15-237, 15-238, 15-239, 15-240, 15-241, 15-242, 15-243, 15-244, 15-245, 15-246, 15-247, 15-248, 15-249, 15-250, 15-251, 15-252, 15-253, 15-254, 15-255, 15-256, 15-257, 15-258, 15-259, 15-260, 15-261, 15-262, 15-263, 15-264, 15-265, 15-266, 15-267, 15-268, 15-269, 15-270, 15-271, 15-272, 15-273, 15-274, 15-275, 15-276, 15-277, 15-278, 15-279, 15-280, 15-281, 15-282, 15-283, 15-284, 15-285, 15-286, 15-287, 15-288, 15-289, 15-290, 15-291, 15-292, 15-293, 15-294, 15-295, 15-296, 15-297, 15-298, 15-299, 15-300, 15-301, 15-302, 15-303, 15-304, 15-305, 15-306, 15-307, 15-308, 15-309, 15-310, 15-311, 15-312, 15-313, 15-314, 15-315, 15-316, 15-317, 15-318, 15-319, 15-320, 15-321, 15-322, 15-323, 15-324, 15-325, 15-326, 15-327, 15-328, 15-329, 15-330, 15-331, 15-332, 15-333, 15-334, 15-335, 15-336, 15-337, 15-338, 15-339, 15-340, 15-341, 15-342, 15-343, 15-344, 15-345, 15-346, 15-347, 15-348, 15-349, 15-350, 15-351, 15-352, 15-353, 15-354, 15-355, 15-356, 15-357, 15-358, 15-359, 15-360, 15-361, 15-362, 15-363, 15-364, 15-365, 15-366, 15-367, 15-368, 15-369, 15-370, 15-371, 15-372, 15-373, 15-374, 15-375, 15-376, 15-377, 15-378, 15-379, 15-380, 15-381, 15-382, 15-383, 15-384, 15-385, 15-386, 15-387, 15-388, 15-389, 15-390, 15-391, 15-392, 15-393, 15-394, 15-395, 15-396, 15-397, 15-398, 15-399, 15-400, 15-401, 15-402, 15-403, 15-404, 15-405, 15-406, 15-407, 15-408, 15-409, 15-410, 15-411, 15-412, 15-413, 15-414, 15-415, 15-416, 15-417, 15-418, 15-419, 15-420, 15-421, 15-422, 15-423, 15-424, 15-425, 15-426, 15-427, 15-428, 15-429, 15-430, 15-431, 15-432, 15-433, 15-434, 15-435, 15-436, 15-437, 15-438, 15-439, 15-440, 15-441, 15-442, 15-443, 15-444, 15-445, 15-446, 15-447, 15-448, 15-449, 15-450, 15-451, 15-452, 15-453, 15-454, 15-455, 15-456, 15-457, 15-458, 15-459, 15-460, 15-461, 15-462, 15-463, 15-464, 15-465, 15-466, 15-467, 15-468, 15-469, 15-470, 15-471, 15-472, 15-473, 15-474, 15-475, 15-476, 15-477, 15-478, 15-479, 15-480, 15-481, 15-482, 15-483, 15-484, 15-485, 15-486, 15-487, 15-488, 15-489, 15-490, 15-491, 15-492, 15-493, 15-494, 15-495, 15-496, 15-497, 15-498, 15-499, 15-500, 15-501, 15-502, 15-503, 15-504, 15-505, 15-506, 15-507, 15-508, 15-509, 15-510, 15-511, 15-512, 15-513, 15-514, 15-515, 15-516, 15-517, 15-518, 15-519, 15-520, 15-521, 15-522, 15-523, 15-524, 15-525, 15-526, 15-527, 15-528, 15-529, 15-530, 15-531, 15-532, 15-533, 15-534, 15-535, 15-536, 15-537, 15-538, 15-539, 15-540, 15-541, 15-542, 15-543, 15-544, 15-545, 15-546, 15-547, 15-548, 15-549, 15-550, 15-551, 15-552, 15-553, 15-554, 15-555, 15-556, 15-557, 15-558, 15-559, 15-560, 15-561, 15-562, 15-563, 15-564, 15-565, 15-566, 15-567, 15-568, 15-569, 15-570, 15-571, 15-572, 15-573, 15-574, 15-575, 15-576, 15-577, 15-578, 15-579, 15-580, 15-581, 15-582, 15-583, 15-584, 15-585, 15-586, 15-587, 15-588, 15-589, 15-590, 15-591, 15-592, 15-593, 15-594, 15-595, 15-596, 15-597, 15-598, 15-599, 15-600, 15-601, 15-602, 15-603, 15-604, 15-605, 15-606, 15-607, 15-608, 15-609, 15-610, 15-611, 15-612, 15-613, 15-614, 15-615, 15-616, 15-617, 15-618, 15-619, 15-620, 15-621, 15-622, 15-623, 15-624, 15-625, 15-626, 15-627, 15-628, 15-629, 15-630, 15-631, 15-632, 15-633, 15-634, 15-635, 15-636, 15-637, 15-638, 15-639, 15-640, 15-641, 15-642, 15-643, 15-644, 15-645, 15-646, 15-647, 15-648, 15-649, 15-650, 15-651, 15-652, 15-653, 15-654, 15-655, 15-656, 15-657, 15-658, 15-659, 15-660, 15-661, 15-662, 15-663, 15-664, 15-665, 15-666, 15-667, 15-668, 15-669, 15-670, 15-671, 15-672, 15-673, 15-674, 15-675, 15-676, 15-677, 15-678, 15-679, 15-680, 15-681, 15-682, 15-683, 15-684, 15-685, 15-686, 15-687, 15-688, 15-689, 15-690, 15-691, 15-692, 15-693, 15-694, 15-695, 15-696, 15-697, 15-698, 15-699, 15-700, 15-701, 15-702, 15-703, 15-704, 15-705, 15-706, 15-707, 15-708, 15-709, 15-710, 15-711, 15-712, 15-713, 15-714, 15-715, 15-716, 15-717, 15-718, 15-719, 15-720, 15-721, 15-722, 15-723, 15-724, 15-725, 15-726, 15-727, 15-728, 15-729, 15-730, 15-731, 15-732, 15-733, 15-734, 15-735, 15-736, 15-737, 15-738, 15-739, 15-740, 15-741, 15-742, 15-743, 15-744, 15-745, 15-746, 15-747, 15-748, 15-749, 15-750, 15-751, 15-752, 15-753, 15-754, 15-755, 15-756, 15-757, 15-758, 15-759, 15-760, 15-761, 15-762, 15-763, 15-764, 15-765, 15-766, 15-767, 15-768, 15-769, 15-770, 15-771, 15-772, 15-773, 15-774, 15-775, 15-776, 15-777, 15-778, 15-779, 15-780, 15-781, 15-782, 15-783, 15-784, 15-785, 15-786, 15-787, 15-788, 15-789, 15-790, 15-791, 15-792, 15-793, 15-794, 15-795, 15-796, 15-797, 15-798, 15-799, 15-800, 15-801, 15-802, 15-803, 15-804, 15-805, 15-806, 15-807, 15-808, 15-809, 15-810, 15-811, 15-812, 15-813, 15-814, 15-815, 15-816, 15-817, 15-818, 15-819, 15-820, 15-821, 15-822, 15-823, 15-824, 15-825, 15-826, 15-827, 15-828, 15-829, 15-830, 15-831, 15-832, 15-833, 15-834, 15-835, 15-836, 15-837, 15-838, 15-839, 15-840, 15-841, 15-842, 15-843, 15-844, 15-845, 15-846, 15-847, 15-848, 15-849, 15-850, 15-851, 15-852, 15-853, 15-854, 15-855, 15-856, 15-857, 15-858, 15-859, 15-860, 15-861, 15-862, 15-863, 15-864, 15-865, 15-866, 15-867, 15-868, 15-869, 15-870, 15-871, 15-872, 15-873, 15-874, 15-875, 15-876, 15-877, 15-878, 15-879, 15-880, 15-881, 15-882, 15-883, 15-884, 15-885, 15-886, 15-887, 15-888, 15-889, 15-890, 15-891, 15-892, 15-893, 15-894, 15-895, 15-896, 15-897, 15-898, 15-899, 15-900, 15-901, 15-902, 15-903, 15-904, 15-905, 15-906, 15-907, 15-908, 15-909, 15-910, 15-911, 15-912, 15-913, 15-914, 15-915, 15-916, 15-917, 15-918, 15-919, 15-920, 15-921, 15-922, 15-923, 15-924, 15-925, 15-926, 15-927, 15-928, 15-929, 15-930, 15-931, 15-932, 15-933, 15-934, 15-935, 15-936, 15-937, 15-938, 15-939, 15-940, 15-941, 15-942, 15-943, 15-944, 15-945, 15-946, 15-947, 15-948, 15-949, 15-950, 15-951, 15-952, 15-953, 15-954, 15-955, 15-956, 15-957, 15-958, 15-959, 15-960, 15-961, 15-962, 15-963, 15-964, 15-965, 15-966, 15-967, 15-968, 15-969, 15-970, 15-971, 15-972, 15-973, 15-974, 15-975, 15-976, 15-977, 15-978, 15-979, 15-980, 15-981, 15-982, 15-983, 15-984, 15-985, 15-986, 15-987, 15-988, 15-989, 15-990, 15-991, 15-992, 15-993, 15-994, 15-995, 15-996, 15-997, 15-998, 15-999, 16-000.

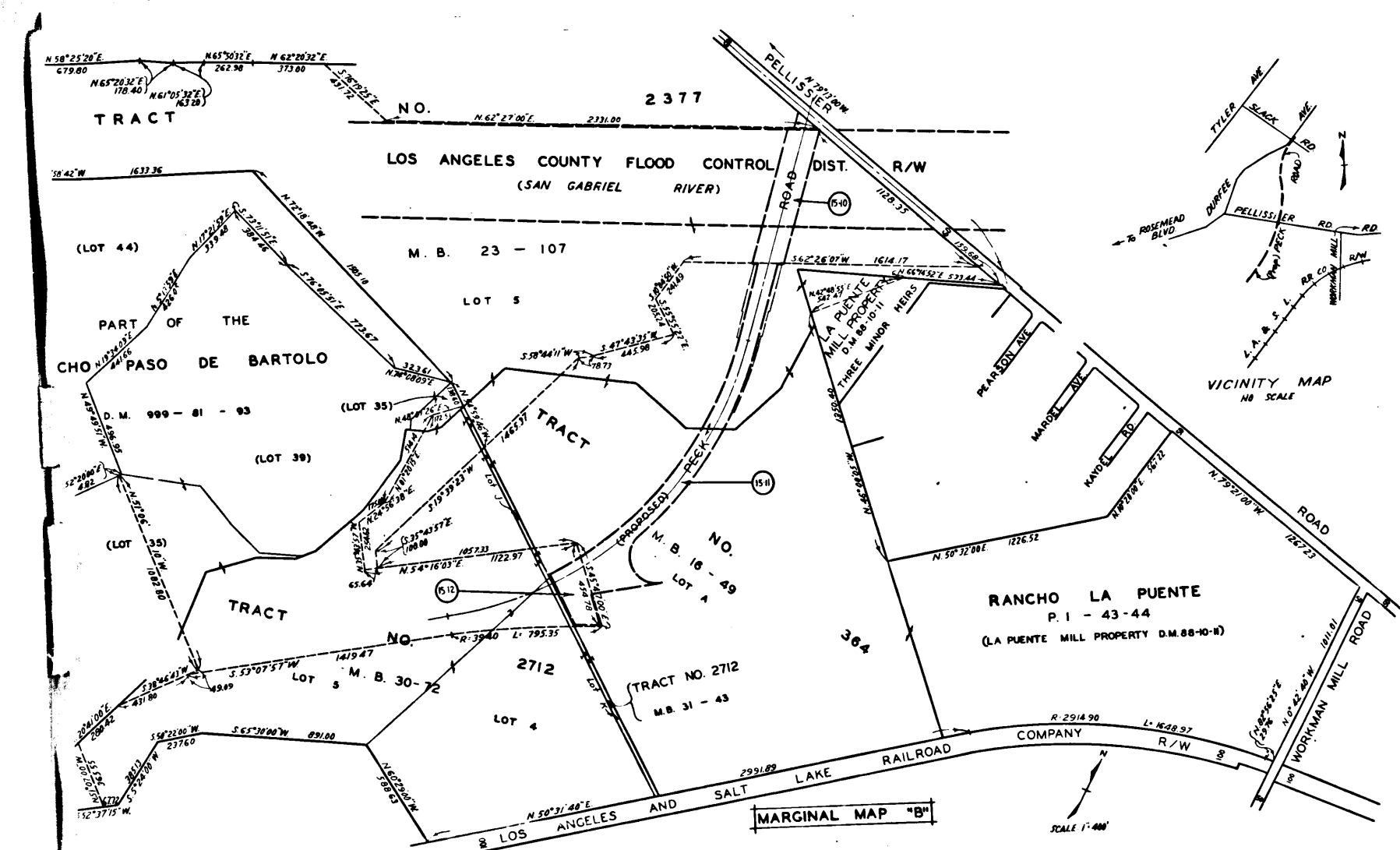
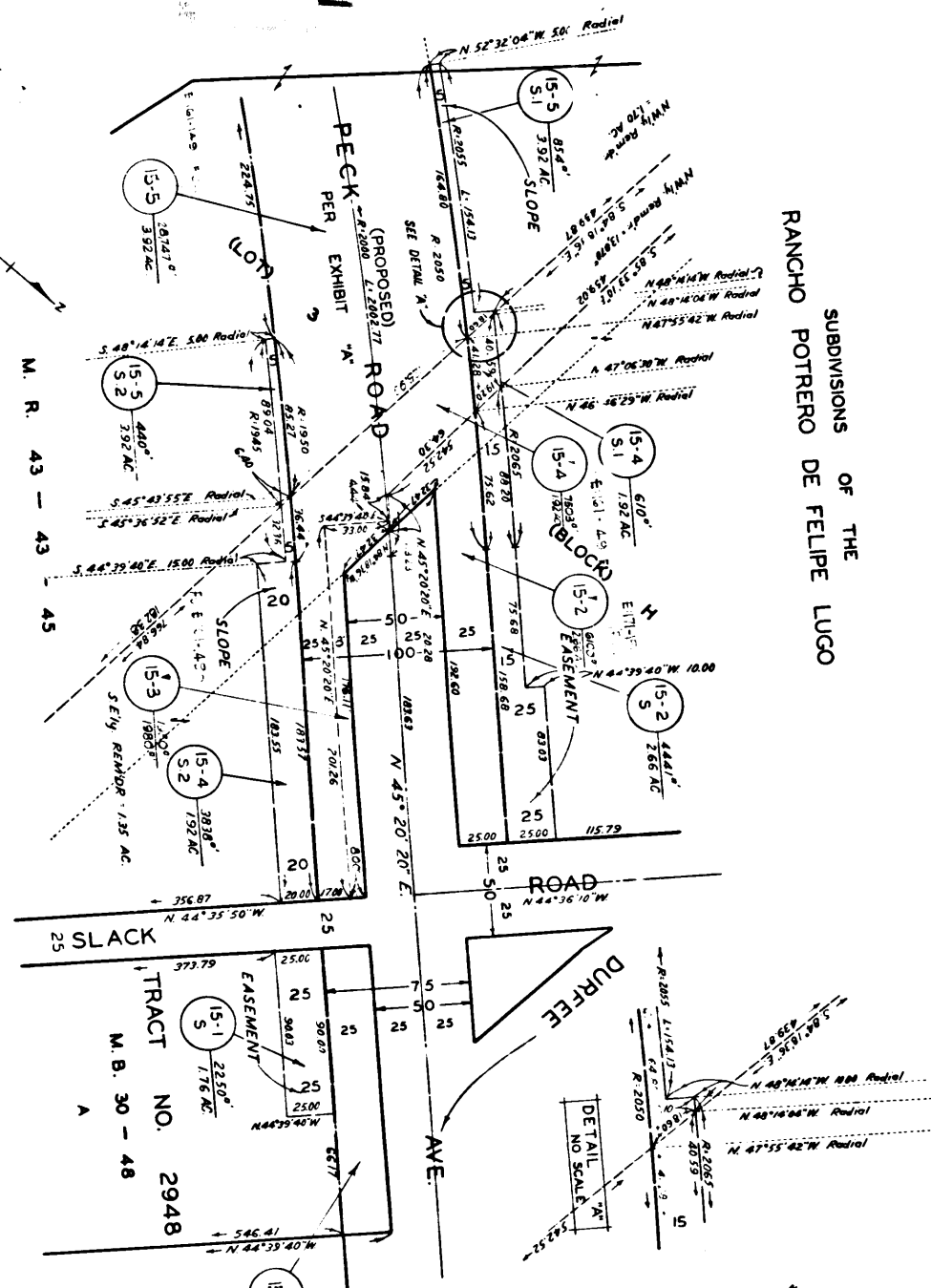


EXHIBIT
 MAP SHOWING PROPERTY TO BE ACQUIRED
 FOR THE OPENING OF
 AND SLOPE EASEMENTS FOR
PECK ROAD

WILLIAM J. FOX COUNTY SURVEYOR
 OCTOBER 1951

LEGEND
 NUMBERS IN CIRCLES REPRESENT PARCELS SOUGHT TO BE ACQUIRED
 PORTIONS COLORED RED SHOW EASEMENTS SOUGHT TO BE ACQUIRED
 FOR HIGHWAY PURPOSES
 PORTIONS COLORED YELLOW SHOW EASEMENTS SOUGHT TO BE ACQUIRED
 FOR SLOPE PURPOSES

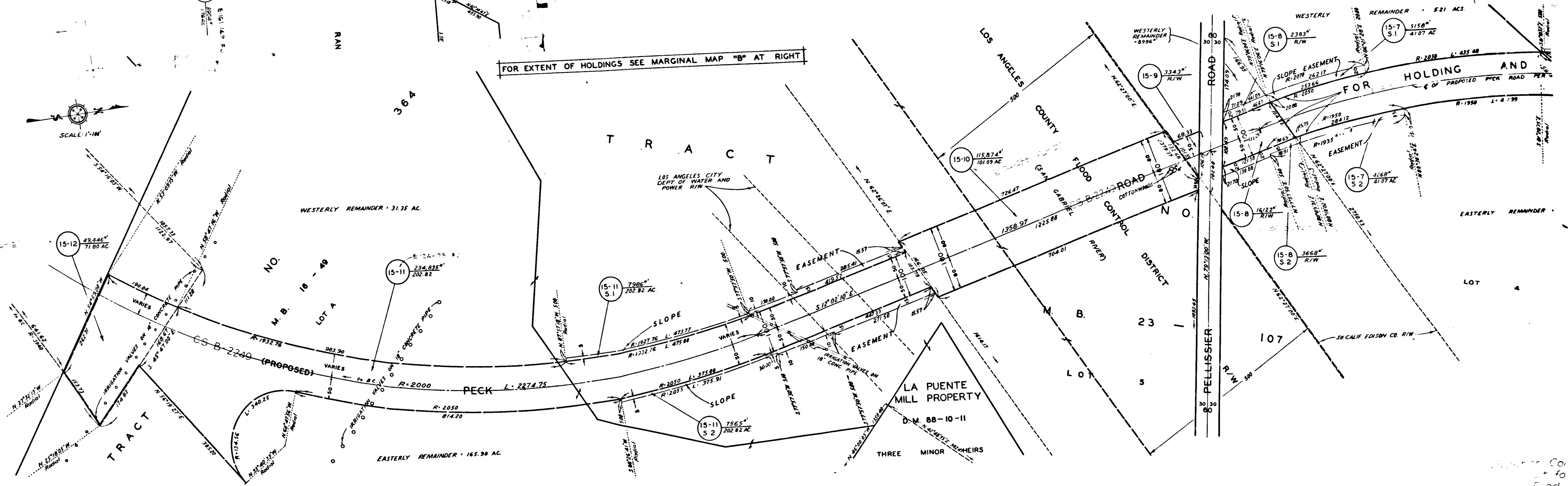
AREAS OF PARCELS SOUGHT TO BE ACQUIRED SHOWN
 THUS: 00000 = AREA OF PARCEL IN SQUARE FEET
 00000 = AREA OF HOLDING IN ACRES

DATE	CHECKED BY	DATE	CALCULATED BY	DATE	DATE	DATE
FORD	WIMMER	10-31	FORD	8-31	10-31	8-31

REFERENCES
 ALIGNMENT: C.S. B-2249
 RD. DEPT. EASEMENT MAP: C.S. B-2249

TOPOGRAPHY: J.N. B-012
 APPRAISER'S FIELD CHECK: C.S. B-2249

INDEX MAP: 37(B.C. 2.3)
 ASSESSOR BOOK: 80, 849-1, 852
PECK ROAD (SUPPLEMENTAL)
 ONE SHEET
 I.M. 37



C.F. 2444 -