

MARGINAL MAP OF HOLDINGS PARCELS 11, 12, 13 & 14

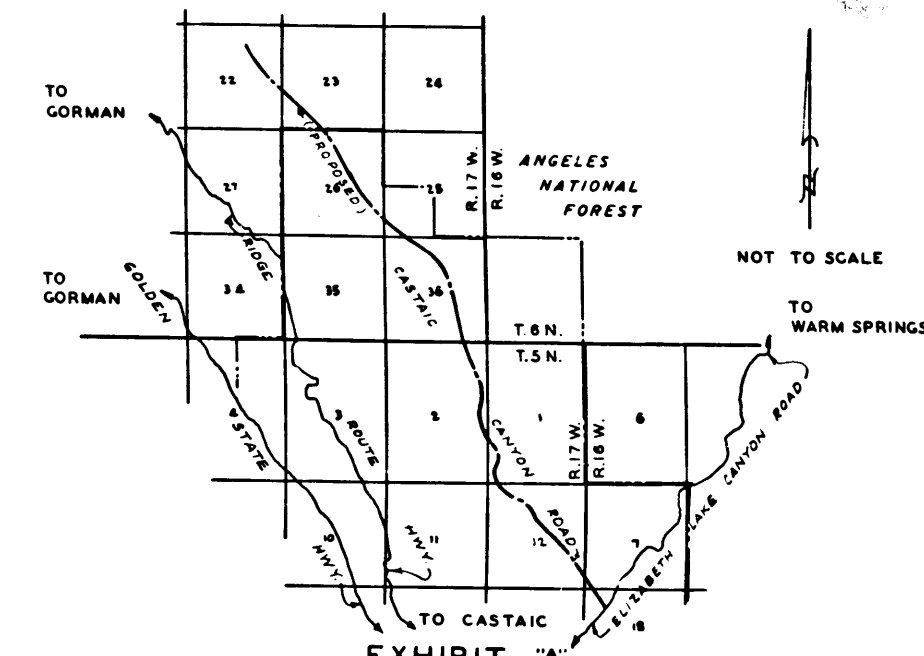
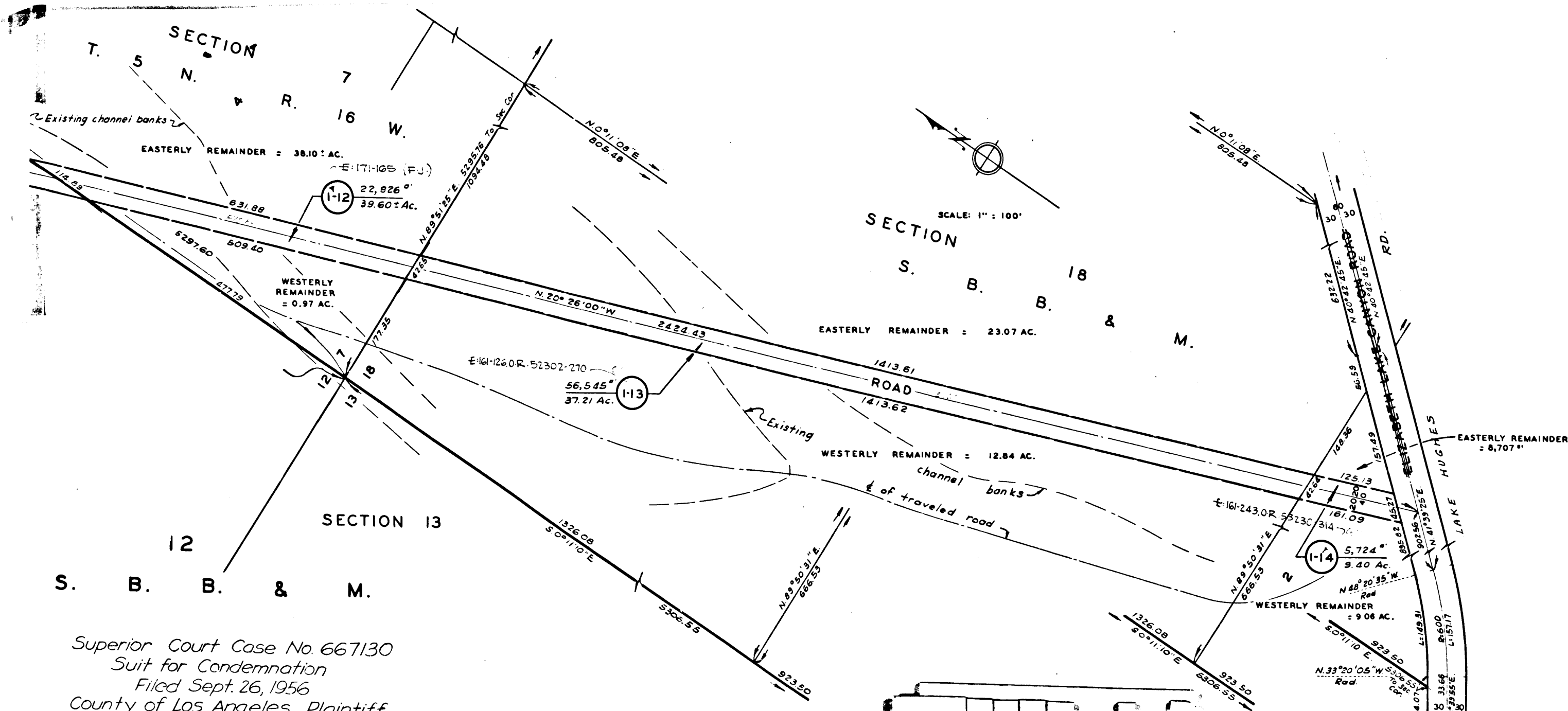
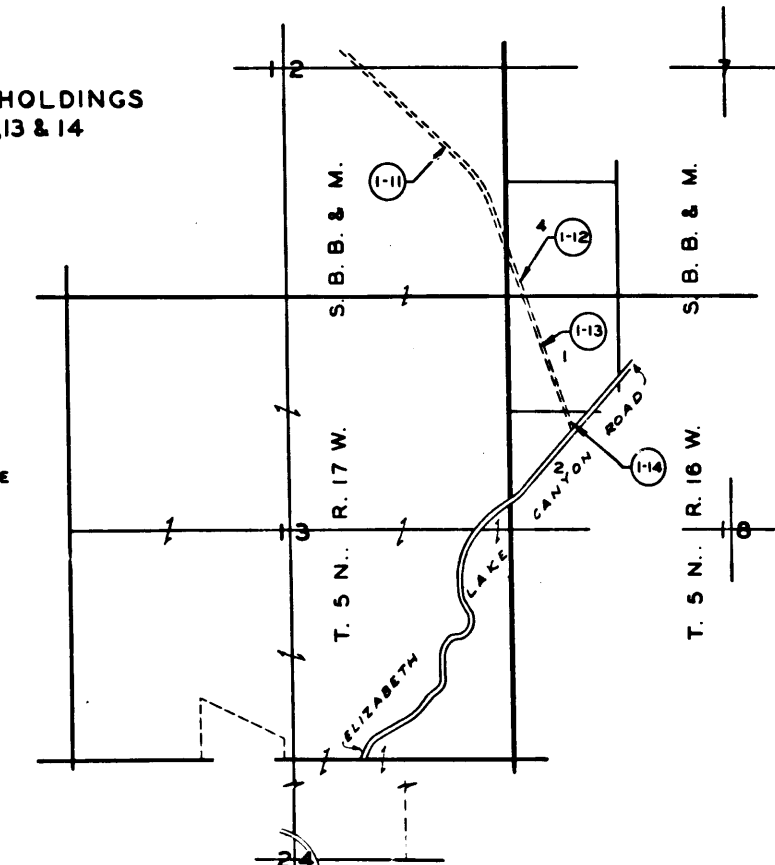


EXHIBIT A
MAP SHOWING PROPERTY SOUGHT TO BE ACQUIRED FOR THE OPENING OF

CASTAIC CANYON ROAD

JOHN A. LAMBIE, COUNTY ENGINEER MAY, 1956
LEGEND

NUMBERS IN CIRCLES REPRESENT PARCELS SOUGHT TO BE ACQUIRED.
PARCELS FOR PROPOSED HIGHWAY EASEMENTS SHOWN IN RED.
PARCELS FOR PROPOSED SLOPE EASEMENTS SHOWN IN YELLOW.

AREAS SHOWN THUS: 0000 = AREA OF PARCEL IN SQUARE FEET.
00000 = AREA OF HOLDING IN ACRES.

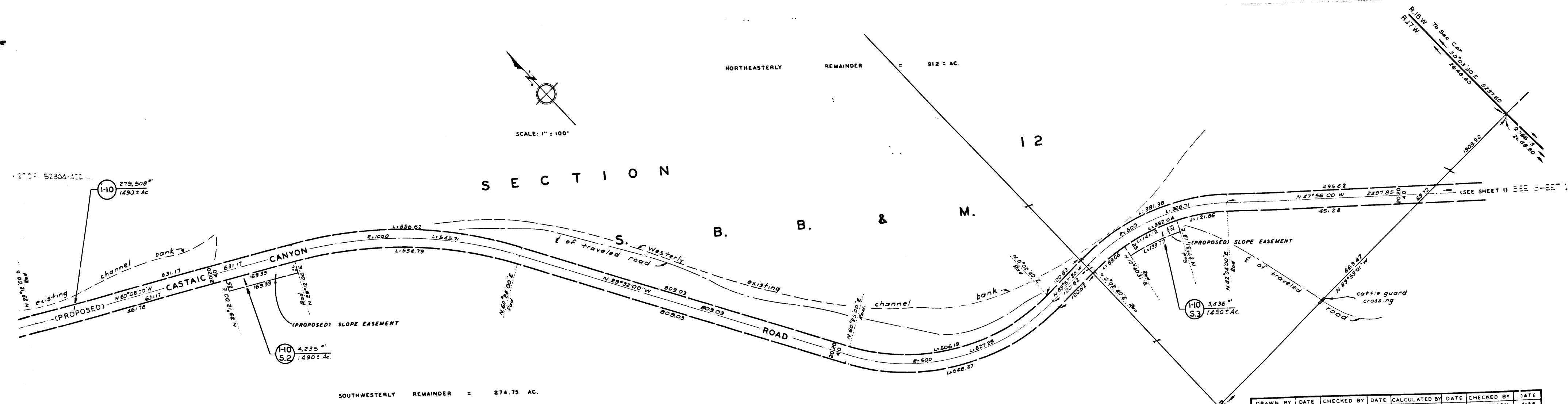
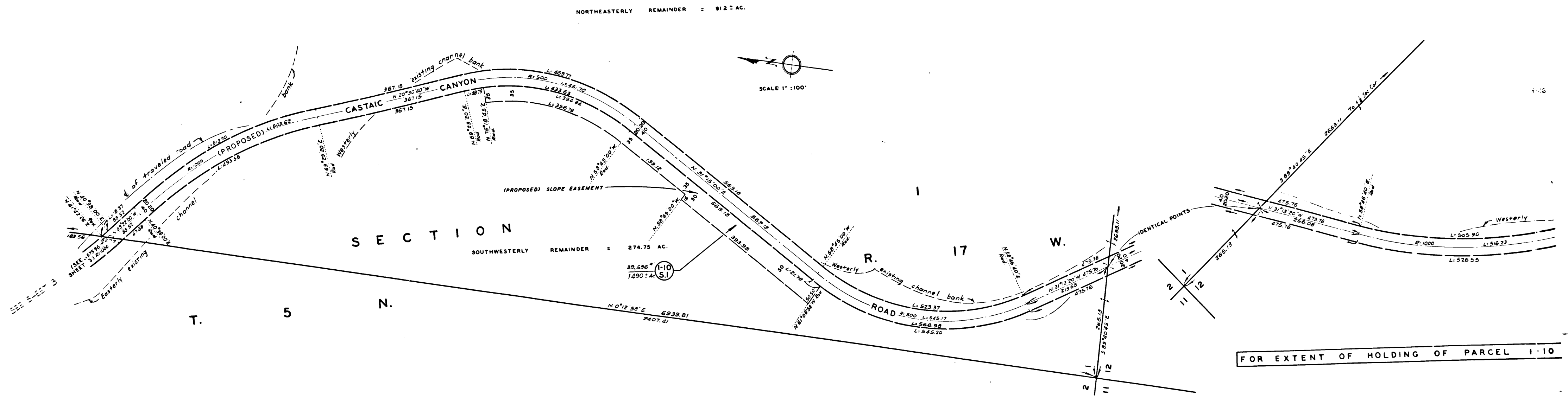
DRAWN BY	DATE	CHECKED BY	DATE	CALCULATED BY	DATE	CHECKED BY	DATE
FARMER	3-56	ANDERSON	4-56	FARMER	3-56	ANDERSON	4-56

ALIGNMENT: ROAD DEPT DEED MAP & C.S.B-1226 REVISIONS:
TOPOGRAPHY: APPRAISERS FIELD NOTES
INDEX MAP: 17-C-34
ASSESSOR BOOKS: 170-1 & 362-1 JOB NO. 0913.46

CASTAIC CANYON ROAD ①
SHEET 1 OF 6 SHEETS

Superior Court Case No. 667130
Suit for Condemnation
Filed Sept. 26, 1956
County of Los Angeles, Plaintiff.
vs
Joseph Perumean, et al, Defts.
Case dismissed as to all Par.
(Except Par 1-17.)

C.F. 2445 1-6



SEE SHEET 3

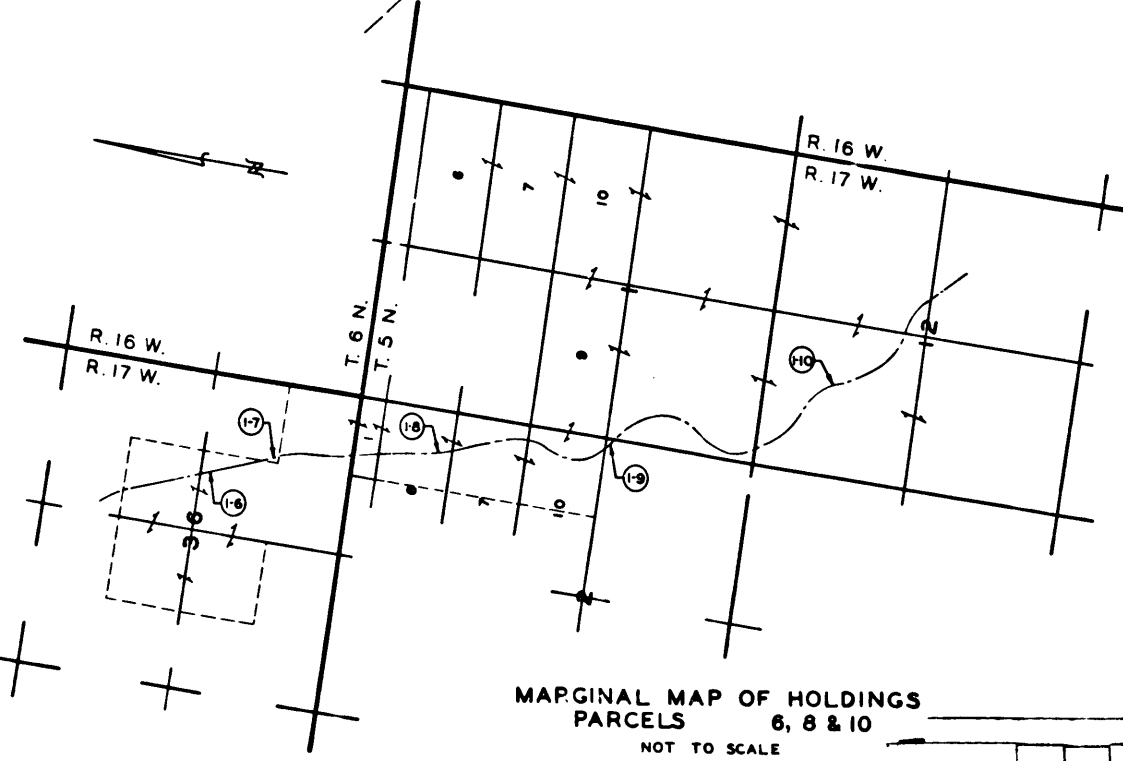
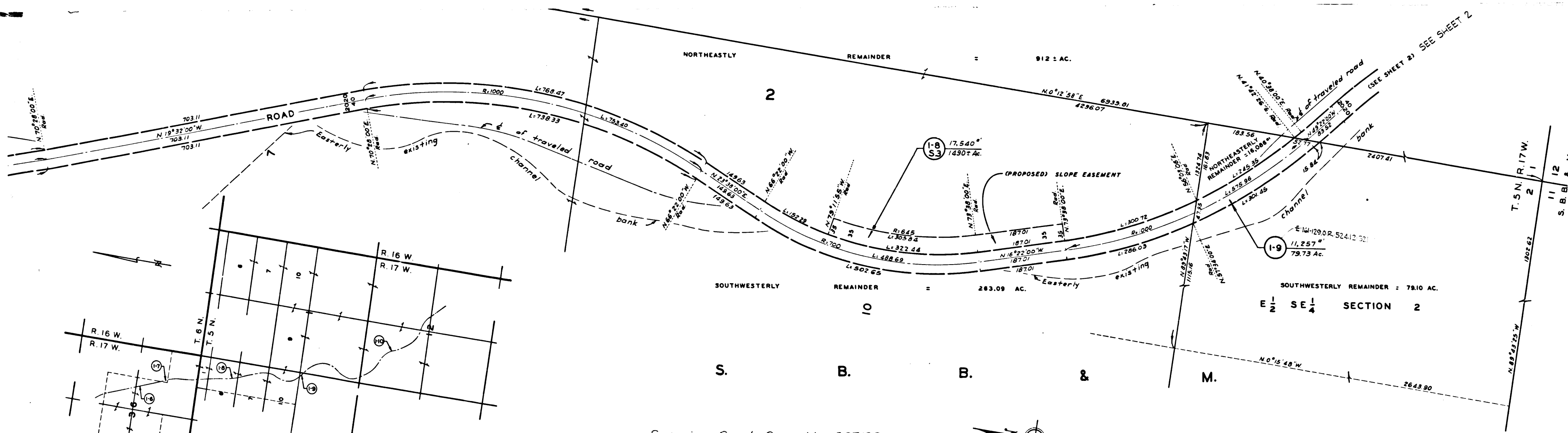
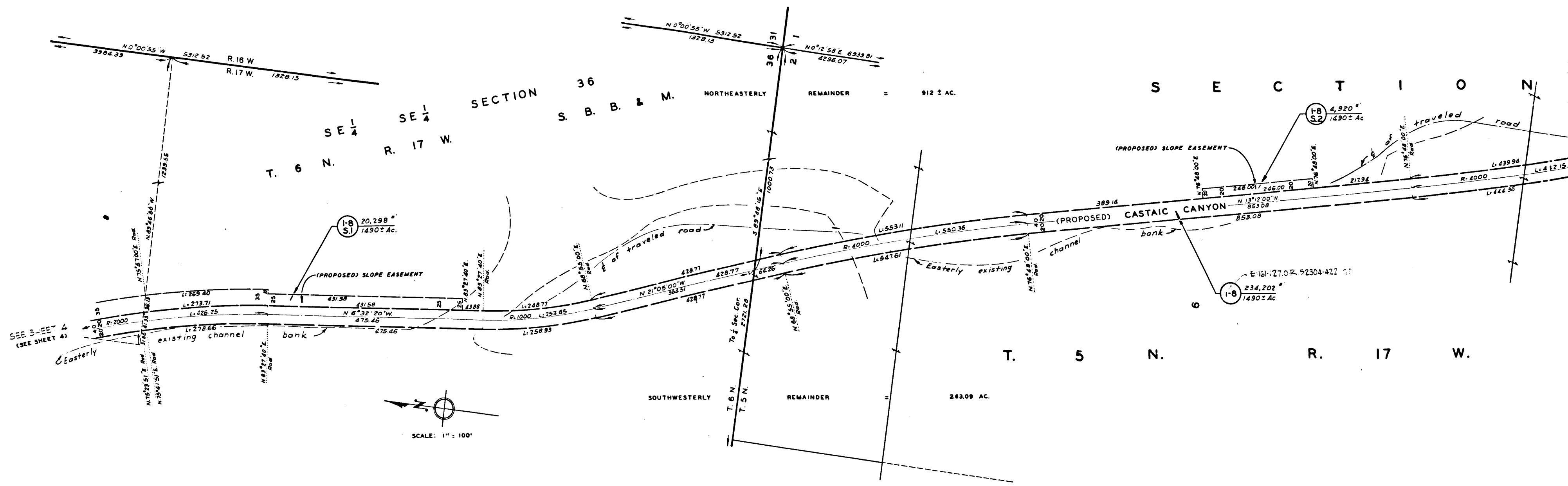
C.F. 2445 2-6

Superior Court Case No 667130
 Suit for Condemnation
 Filed Sept. 26, 1956
 County of Los Angeles, Plaintiff.
 VS
 Joseph Perumeau, et al, Defs.
 Case assessed on the 1st

DRAWN BY	DATE	CHECKED BY	DATE	CALCULATED BY	DATE	CHECKED BY	DATE
FARMER	3-56	ANDERSON	4-56	FARMER	3-56	ANDERSON	4-56

ALIGNMENT: ROAD DEPT. DEED MAP & C.S. 8-1226 REVISIONS:
 TOPOGRAPHY: APPRAISERS FIELD NOTES
 INDEX MAP: 17-C-3,4
 ASSESSOR BOOKS: 170-1 & 382-1 JOB NO. 0913.46

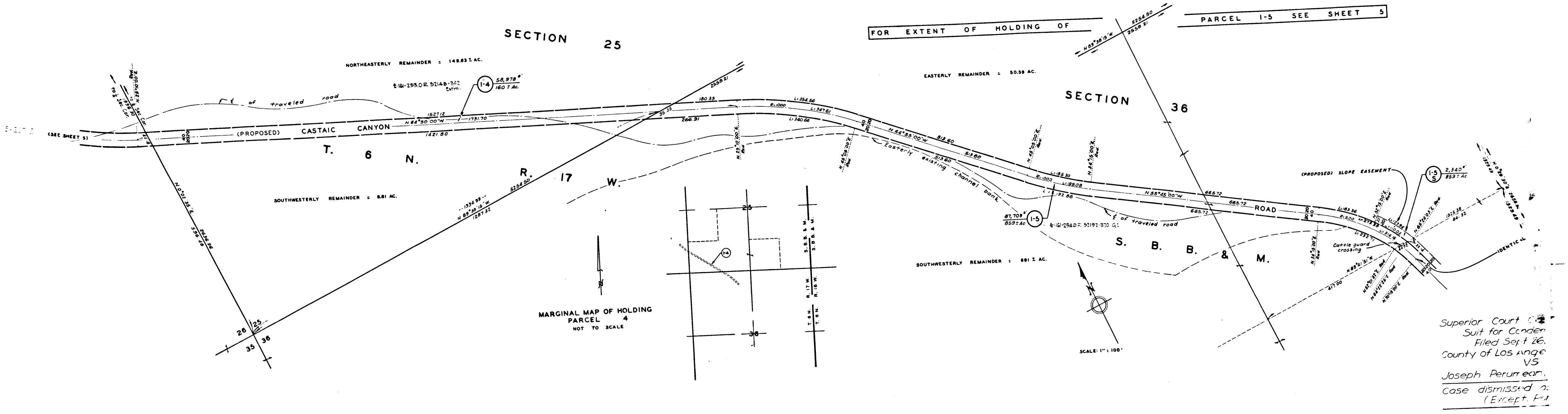
CASTAIC CANYON ROAD (1)
 SHEET 2 OF 8 SHEETS



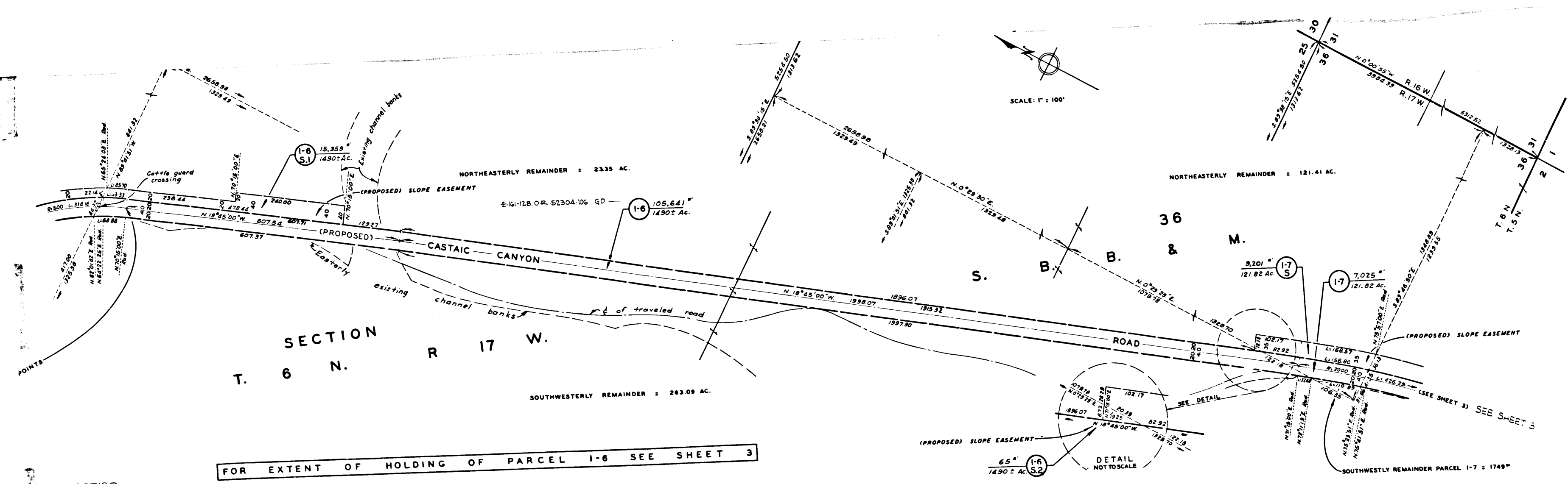
Superior Court Case No. 667130
Suit for Condemnation.
Filed Sept. 26, 1956
County of Los Angeles, Plaintiff.
VS
Joseph Perumean, et al, Defts.
Case dismissed as to all Par.
(Except Par. 1-12)

C.F. 2445 3-6

DRAWN BY	DATE	CHECKED BY	DATE	CALCULATED BY	DATE	CHECKED BY	DATE
FARMER	3-58	ANDERSON	4-58	FARMER	3-58	ANDERSON	4-58
ALIGNMENT: ROAD DEPT. DEED MAP & CS B-1228 REVISIONS:							
TOPOGRAPHY: APPRAISERS FIELD NOTES							
INDEX MAP: 17-C-3.4							
ASSESSOR BOOK: 170-1 & 382-1 JOB NO. 0913.46							
CASTAIC CANYON ROAD							
SHEET 3 OF 6 SHEETS							



Superior Court
 Suit for Condemnation
 Filed Sept 26,
 County of Los Angeles
 VS
 Joseph Perurrean,
 Case dismissed as
 (Except. Fil.)



No. 66730
 Plaintiff.
 et al, Defts.
 to all Par.
 112)

C.F. 2445 4-6

DRAWN BY	DATE	CHECKED BY	DATE	CALCULATED BY	DATE	CHECKED BY	DATE
FARMER	3-56	ANDERSON	4-56	FARMER	3-56	ANDERSON	4-56

ALIGNMENT ROAD DEPT DEEDMAP & CSB-12-6 REVISIONS:
 TOPOGRAPHY: APPRAISERS FIELD NOTES
 INSTR MAP: 17-C-34
 ASSESSOR BOOK: 170-1 & 382-1 JOB NO. 0913.46

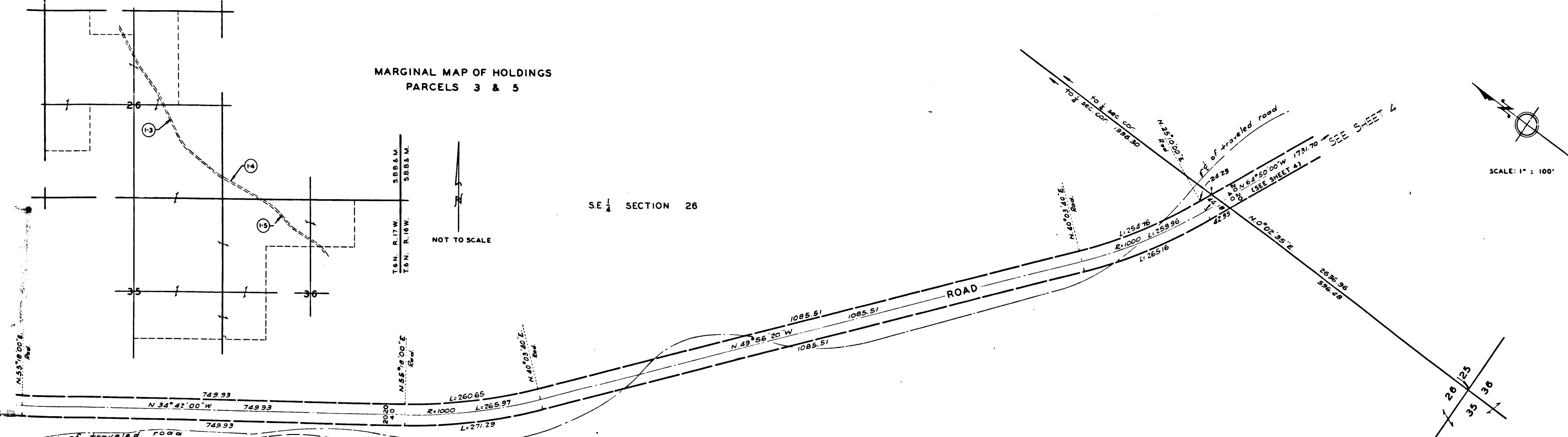
CASTAIC CANYON ROAD ①
 SHEET 4 OF 6 SHEETS

DRAWN BY	DATE	CHECKED BY	DATE	CALCULATED BY	DATE	CHECKED BY	DATE
FARMER	3-56	ANDERSON	4-56	FARMER	3-56	ANDERSON	4-56

ALIGNMENT ROAD DEPT DEEDMAP & CSB-12-6 REVISIONS:
 TOPOGRAPHY: APPRAISERS FIELD NOTES
 INSTR MAP: 17-C-34
 ASSESSOR BOOK: 170-1 & 382-1 JOB NO. 0913.46

CASTAIC CANYON ROAD ①
 SHEET 4 OF 6 SHEETS

MARGINAL MAP OF HOLDINGS
PARCELS 3 & 5



SE 1/4 SECTION 26

NOT TO SCALE

SCALE: 1" = 100'

26
S. B. B. & M.

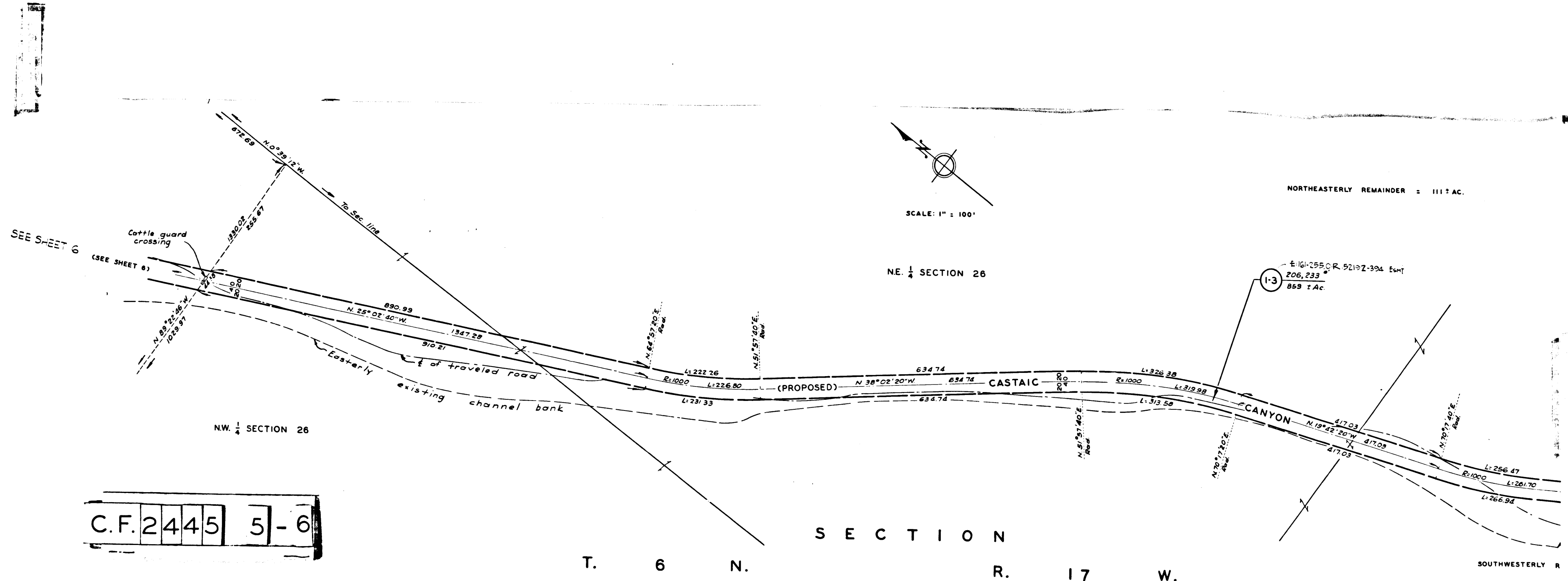
Superior Court Case No. 667130
Suit for Condemnation
Filed Sept. 26, 1956
County of Los Angeles, Plaintiff.
VS
Joseph Perumean, et al, Defts.
Case dismissed as to all Par.
(Except Par. 1-12)

DRAWN BY	DATE	CHECKED BY	DATE	CALCULATED BY	DATE	CHECKED BY	DATE
FARMER	3-56	ANDERSON	4-56	FARMER	3-56	ANDERSON	4-56

ALIGNMENT: ROAD DEPT. DEED MAP & C.S.B-1226 REVISIONS:
TOPOGRAPHY: APPRAISERS FIELD NOTES
INDEX MAP: 17-C-3,4
ASSESSOR BOOKS: 170-1 & 382-1 JOB NO. 0913.48

CASTAIC CANYON ROAD ①
SHEET 5 OF 6 SHEETS

REMAINDER = 691± AC.



SCALE: 1" = 100'

NE 1/4 SECTION 26

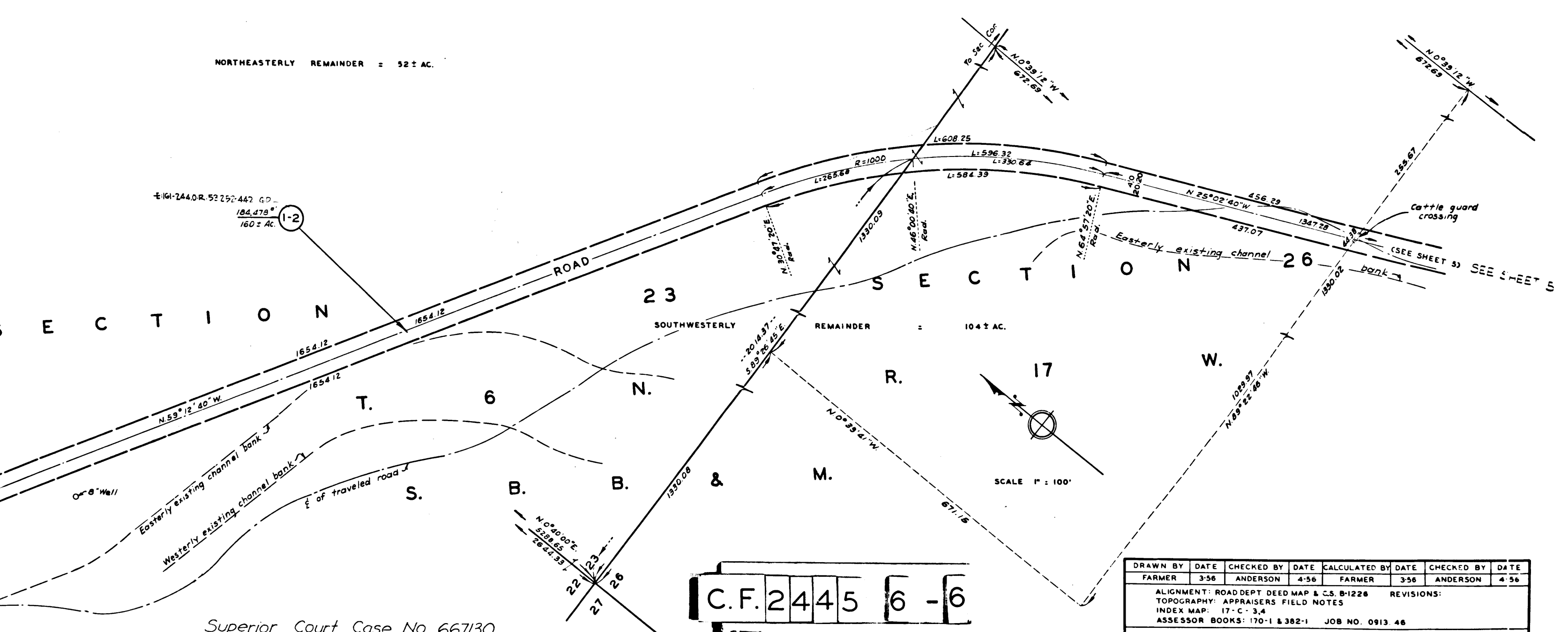
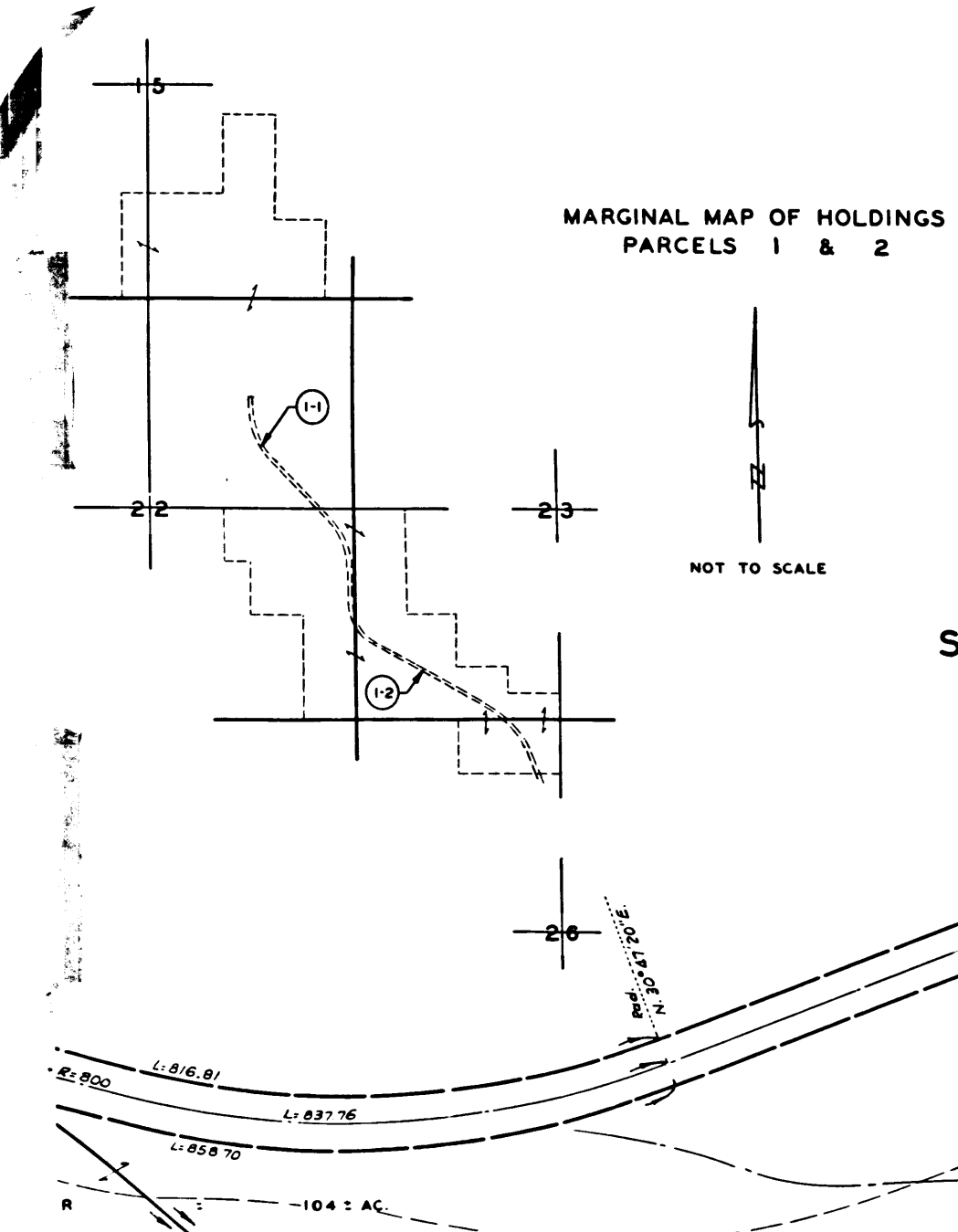
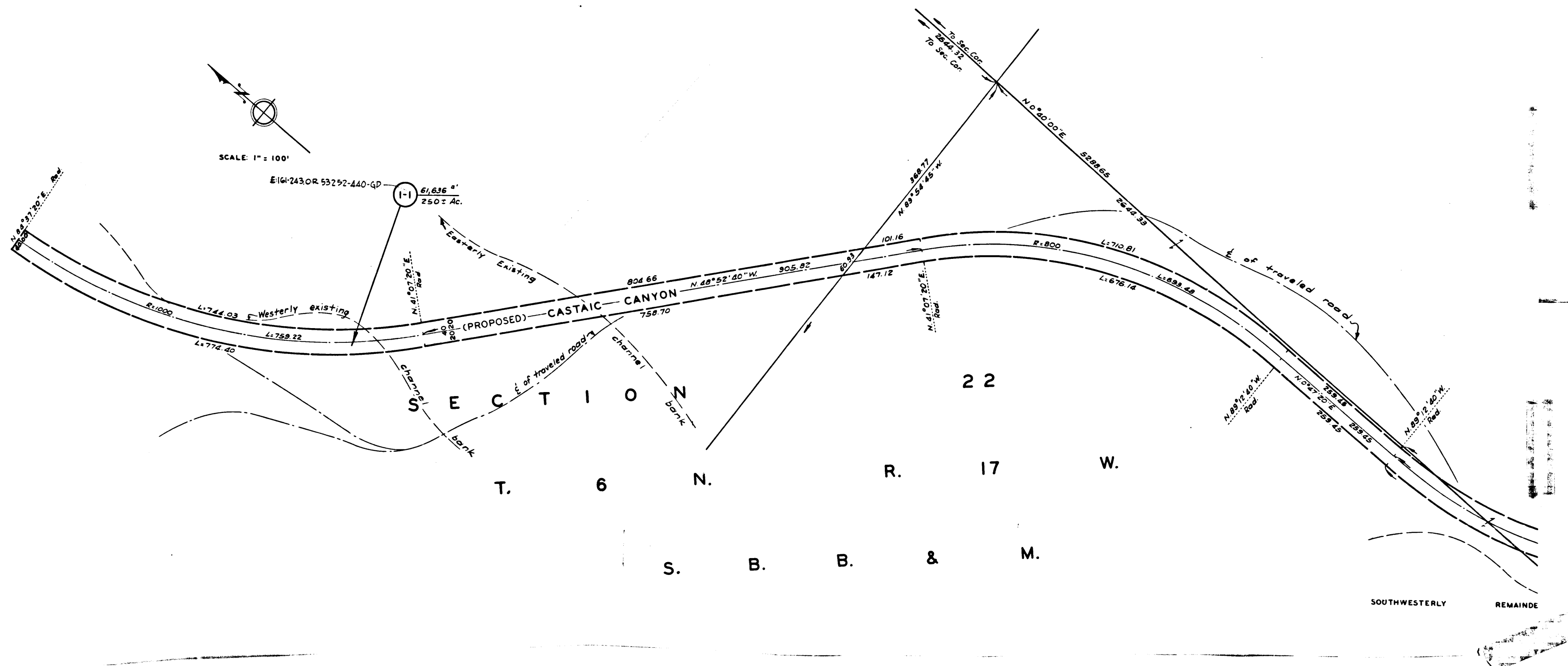
NORTHEASTERLY REMAINDER = 111± AC.

NW 1/4 SECTION 26

C.F. 2445 5-6

T. 6 N. SECTION R. 17 W.

SOUTHWESTERLY R



C.F. 2445 6-6

Superior Court Case No. 667130
Suit for Condemnation
Filed Sept. 26, 1956
County of Los Angeles, Plaintiff.
VS

DRAWN BY	DATE	CHECKED BY	DATE	CALCULATED BY	DATE	CHECKED BY	DATE
FARMER	3-56	ANDERSON	4-56	FARMER	3-56	ANDERSON	4-56

ALIGNMENT: ROAD DEPT. DEED MAP & C.S. 8-1226 REVISIONS:
TOPOGRAPHY: APPRAISERS FIELD NOTES
INDEX MAP: 17-C-3-A
ASSESSOR BOOKS: 170-1 & 382-1 JOB NO. 0913 46

CASTAIC CANYON ROAD (1)
SHEET 6 OF 6 SHEETS