

Superior Court Case
 Suit for Condemnation
 Filed Nov. 2,
 County of Los Angeles
 VS
 L. C. Faus, et al,
 FOR CURRENT
 SEE INDIVIDUAL

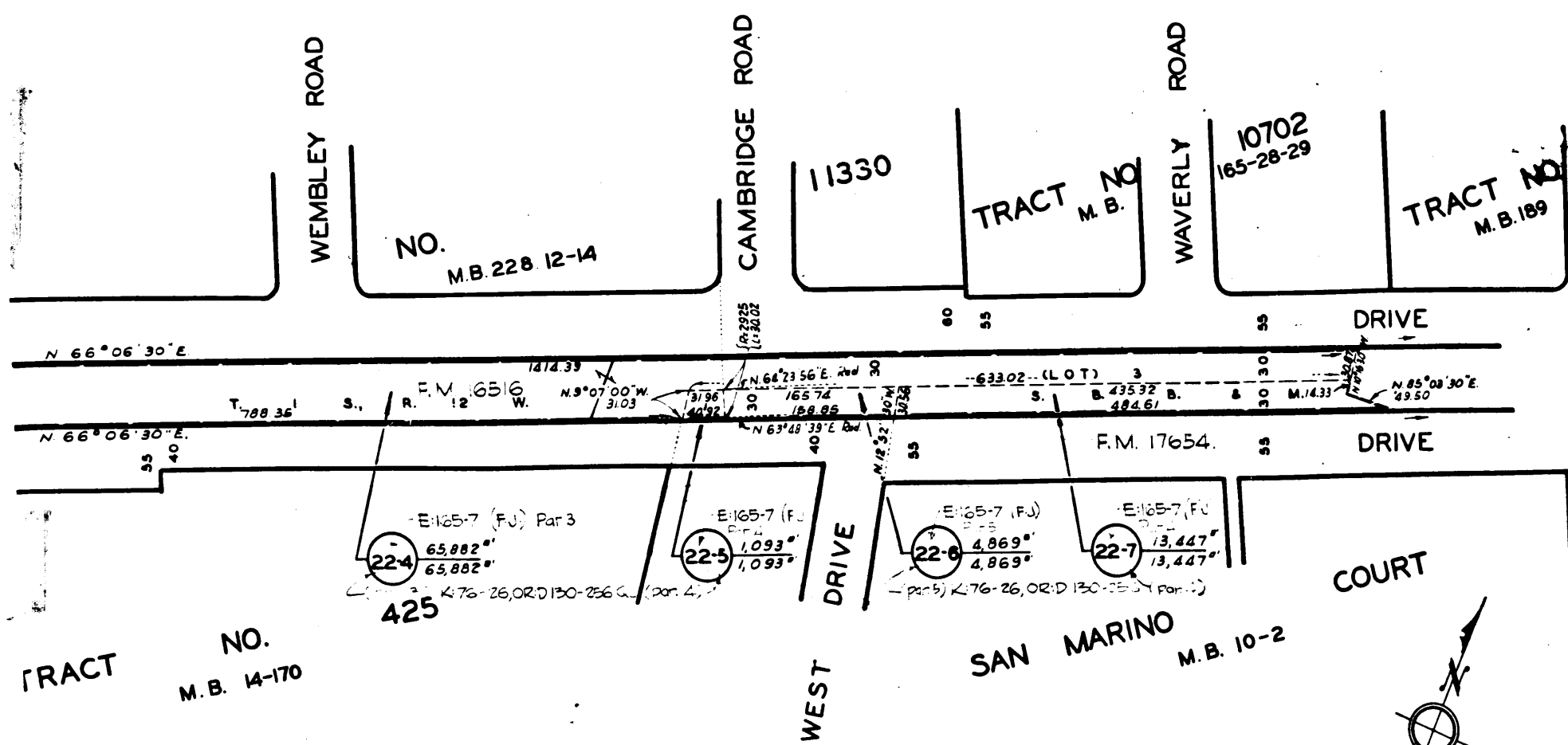
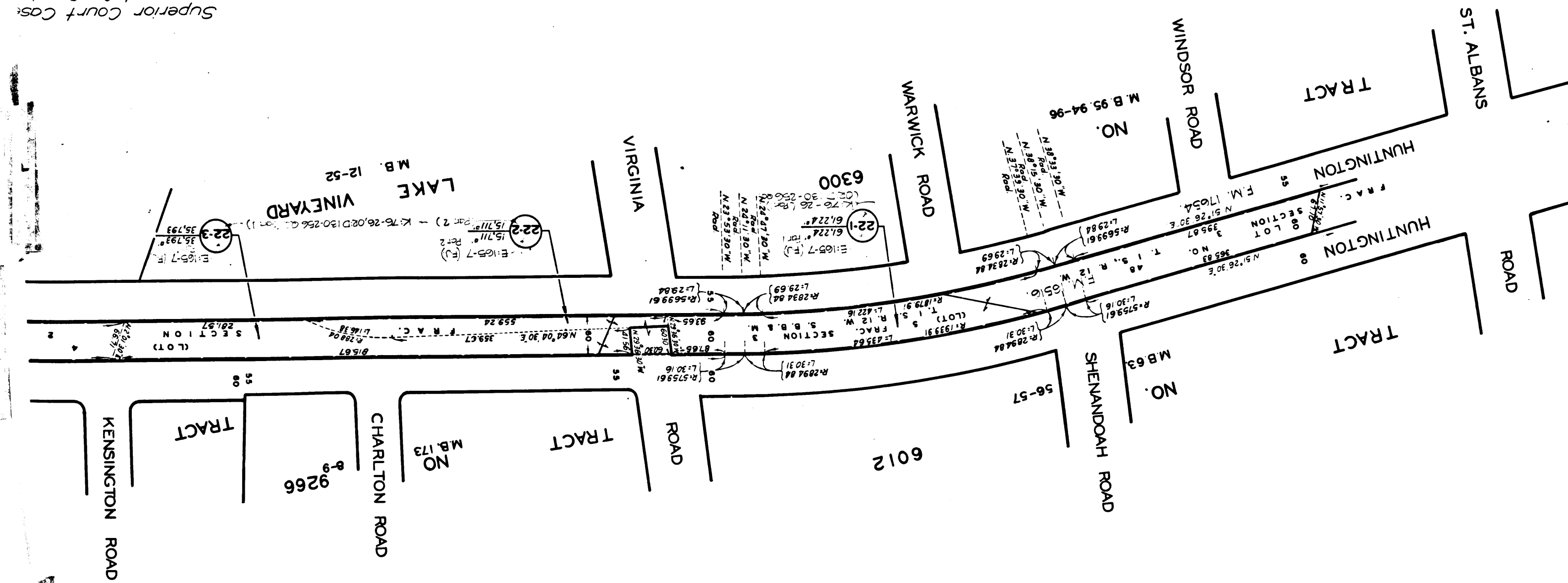


EXHIBIT "A"
 MAP SHOWING PROPERTY SOUGHT TO BE ACQUIRED
 FOR THE WIDENING
 OF
HUNTINGTON DRIVE

JOHN A. LAMBIE COUNTY ENGINEER NOVEMBER 1955
LEGEND
 NUMBERS IN CIRCLES REPRESENT PARCELS SOUGHT TO BE ACQUIRED.
 PARCELS FOR PROPOSED STREET PURPOSES SHOWN IN RED.

AREAS SHOWN THUS: 0000 = AREA OF PARCEL IN SQUARE FEET
 00000 = AREA OF HOLDING IN SQUARE FEET OR ACRES

DRAWN BY	DATE	CHECKED BY	DATE	CALCULATED BY	DATE	CHECKED BY	DATE
R.T. & R.F.	11-55	R.F. & R.T.	11-55	THOMPSON	11-55	FARMER	11-55

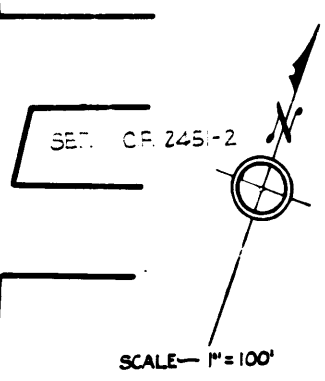
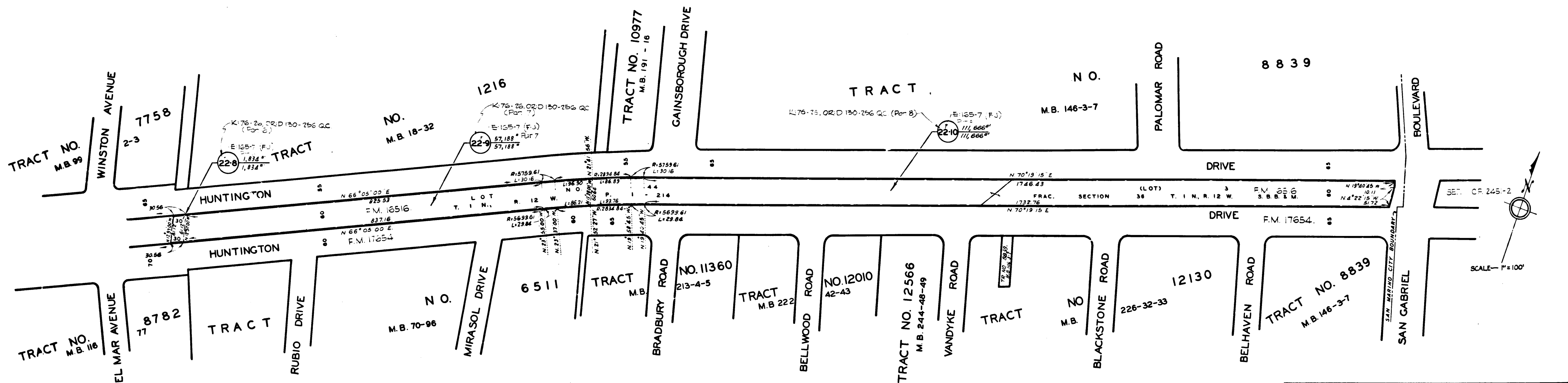
ALIGNMENT: M.B. 228-12, 13, & 14 REVISIONS:
 TOPOGRAPHY: NOT SHOWN
 INDEX MAP: 44.A-4 JOB NO. 0021.47
 ASSESSOR BOOK: 822

HUNTINGTON DRIVE (22)
 SHEET 1 OF 2 SHEETS

No. 651376
 ntion
 1955
 as, Plaintiff
 Defendants
 STATUS

C.F. 2446 1-2

SCALE 1" = 100'



DRAWN BY	DATE	CHECKED BY	DATE	CALCULATED BY	DATE	CHECKED BY	DATE
R. T. & R.F.	11-55	R. F. & R. T.	11-55	THOMPSON	11-55	FARMER	11-55
ALIGNMENT: M.B. 18-32				REVISIONS			
TOPOGRAPHY: NOT SHOWN							
INDEX MAP: 44, B-3							
ASSESSOR BOOK: 707							
						JOB NO. 002147	
						HUNTINGTON DRIVE (22)	
SHEET 2 OF 2 SHEETS							

Superior Court Case No. 651376
 Suit for Condemnation
 Filed Nov. 2, 1955
 County of Los Angeles, Plaintiff
 vs
 L.C. Faus, et al, Defendants
 FOR CURRENT STATUS
 SEE INDIVIDUAL PARCELS

INDEX 44

C.F. 2446 2-2