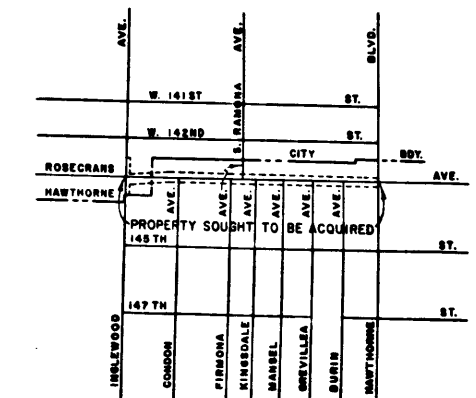
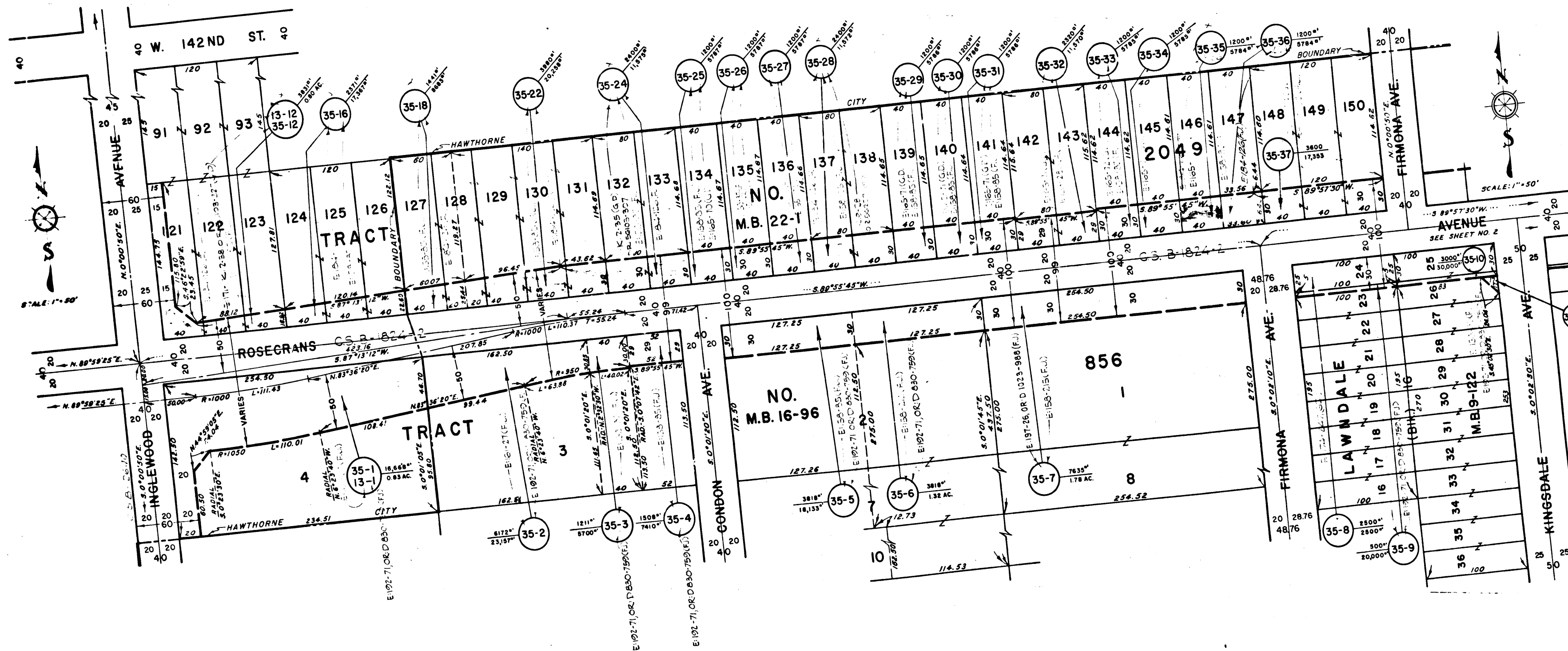


Superior Court Case No 688058
 Suit for Condemnation
 Filed Oct. 8, 1957
 L.A. County Flood Control Dist, P/H/F
 VS
 Gordon W. Shaw, et al. Defendants
 SEE INDIVIDUAL PARCELS FOR
 FINAL JUDGMENTS AND DEEDS



SEE SHEET 2

EXHIBIT "A"
 MAP SHOWING PROPERTY SOUGHT TO BE ACQUIRED
 FOR THE WIDENING
 OF
 ROSECRANS AVENUE
 AND
 INGLEWOOD AVENUE
 WILLIAM J. FOX, COUNTY SURVEYOR. JANUARY 1955
 LEGEND

NUMBERS IN CIRCLES REPRESENT PARCELS SOUGHT TO BE ACQUIRED.
 PARCELS FOR PROPOSED HIGHWAY EASEMENTS SHOWN IN RED.

AREAS SHOWN THIS: 8000 = AREA OF PARCEL IN SQUARE FEET
 00000 = AREA OF HOLDING IN SQUARE FEET OR ACRES

DRAWN BY	DATE	CHECKED BY	DATE	CALCULATED BY	DATE	CHECKED BY	DATE
S. RUSH	12-54	W. SLAVIN	1-55	R. FARMER	10-54	R. THOMPSON	11-54

ALIGNMENT: C.S.B. 12-24-2
 TOPOGRAPHY: SEE APPRAISER'S BRETCHER
 INDEX MAP: 28 (C-2)
 ASSESSOR BOOK: 159

JOB NO. 0900.08

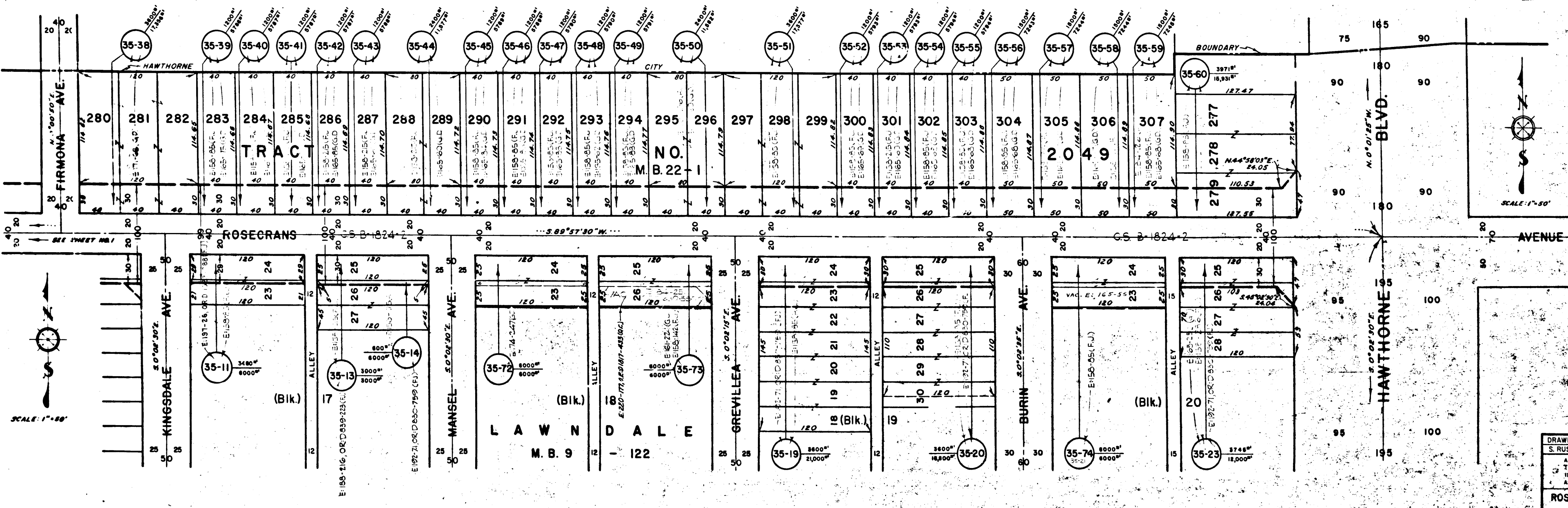
ROSECRANS AVENUE (35) & INGLEWOOD AVENUE (13)
 SHEET 1 OF 2 SHEETS

I.M. NO 25

C.F. 2447 1-2

Superior Court
 County of Los Angeles
 Sheriff
 This Title and
 FOR SEE
 Superior Court
 County of Los Angeles
 Action
 This
 35-17
 35-15
 35-81
 For
 FOR
 SEE

Superior Court Case No 688058
 Suit for Condemnation
 Filed Oct. 8, 1957
 L.A. County Flood Control Dist., Plff.
 VS
 Gordon W. Shaw, et al, Defendants
SEE INDIVIDUAL PARCELS FOR
FINAL JUDGMENTS AND DEEDS



DRAWN BY	DATE	CHECKED BY	DATE	CALCULATED BY	DATE	CHECKED BY	DATE
S. RUSH	12-54	W. SLAVIN	1-55	R. FARMER	10-54	R. THOMPSON	11-54

ALIGNMENT C 8 B-1824-2
 TO BE READY: SEE APPRAISER'S SKETCHES
 INDEX MAP: SEE (C-2)
 ASSessor BOOK: 113
 JOB NO. 0900, 92

ROSECRANS AVENUE (35) INGLEWOOD AVENUE (18)

SHEET 2 OF 3 SHEETS

C.F. 2447 2-2