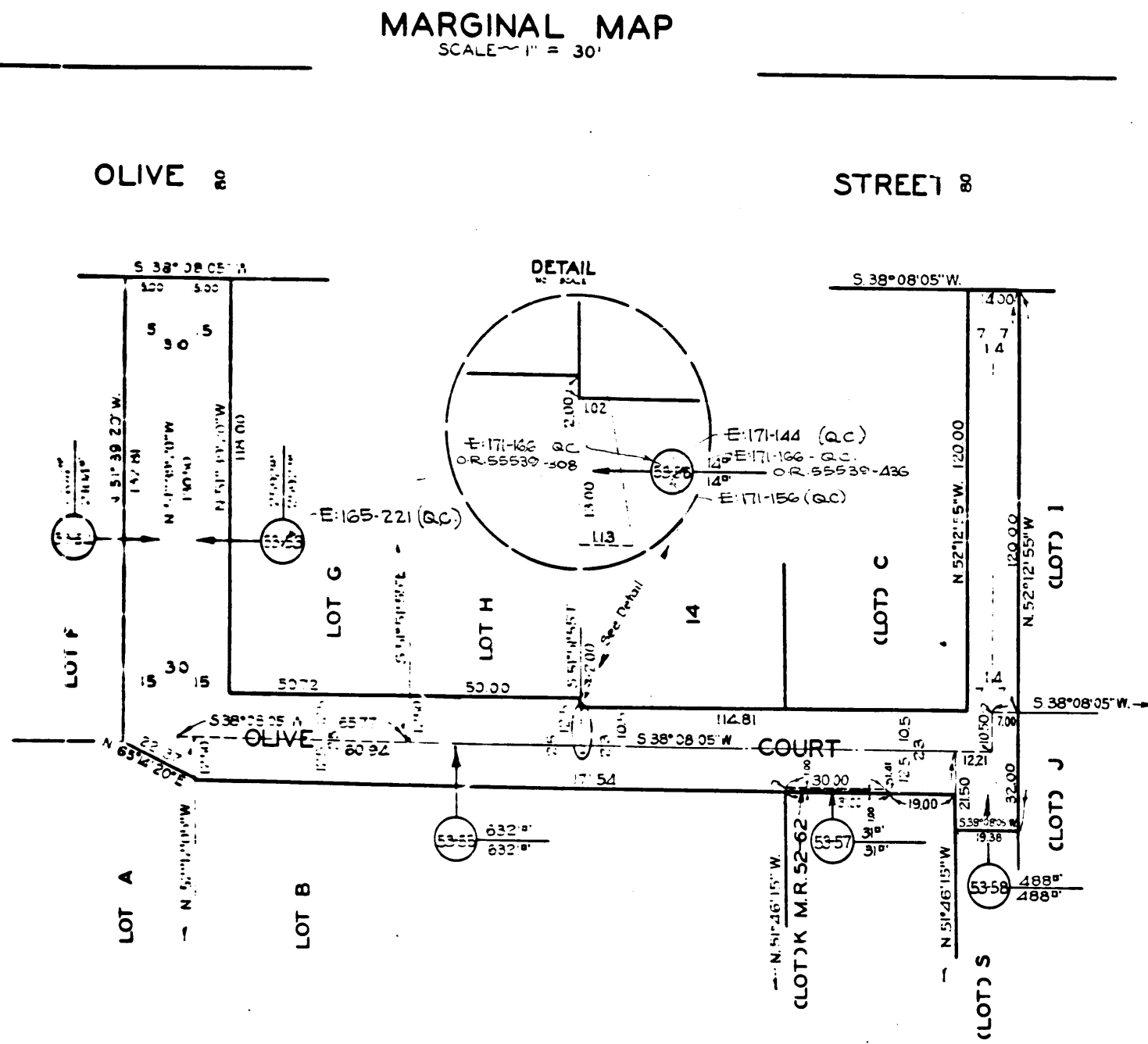


Superior Court Case No. 702152  
 Suit for Condemnation  
 Filed June 4, 1958  
 County of Los Angeles, Plaintiff  
 VS  
 Howard Bernard, et al, Defendants  
 SEE INDIVIDUAL PARCELS FOR  
 FINAL JUDGMENTS AND DEEDS

Superior Court Case No. 658447  
 Suit for Condemnation  
 Filed April 4, 1956  
 County of Los Angeles, Plaintiff  
 VS  
 Anna Anderson, et al, Defendants  
 FOR CURRENT STATUS  
 SEE INDIVIDUAL PARCELS

MARGINAL MAP  
 SCALE 1" = 30'



SEE SHEET 2.

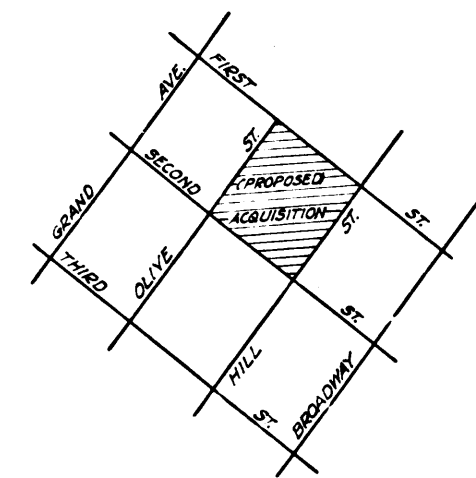
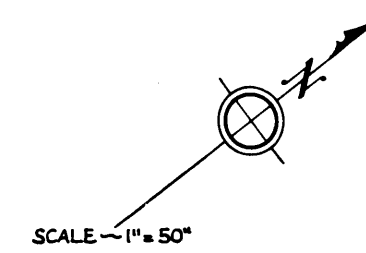
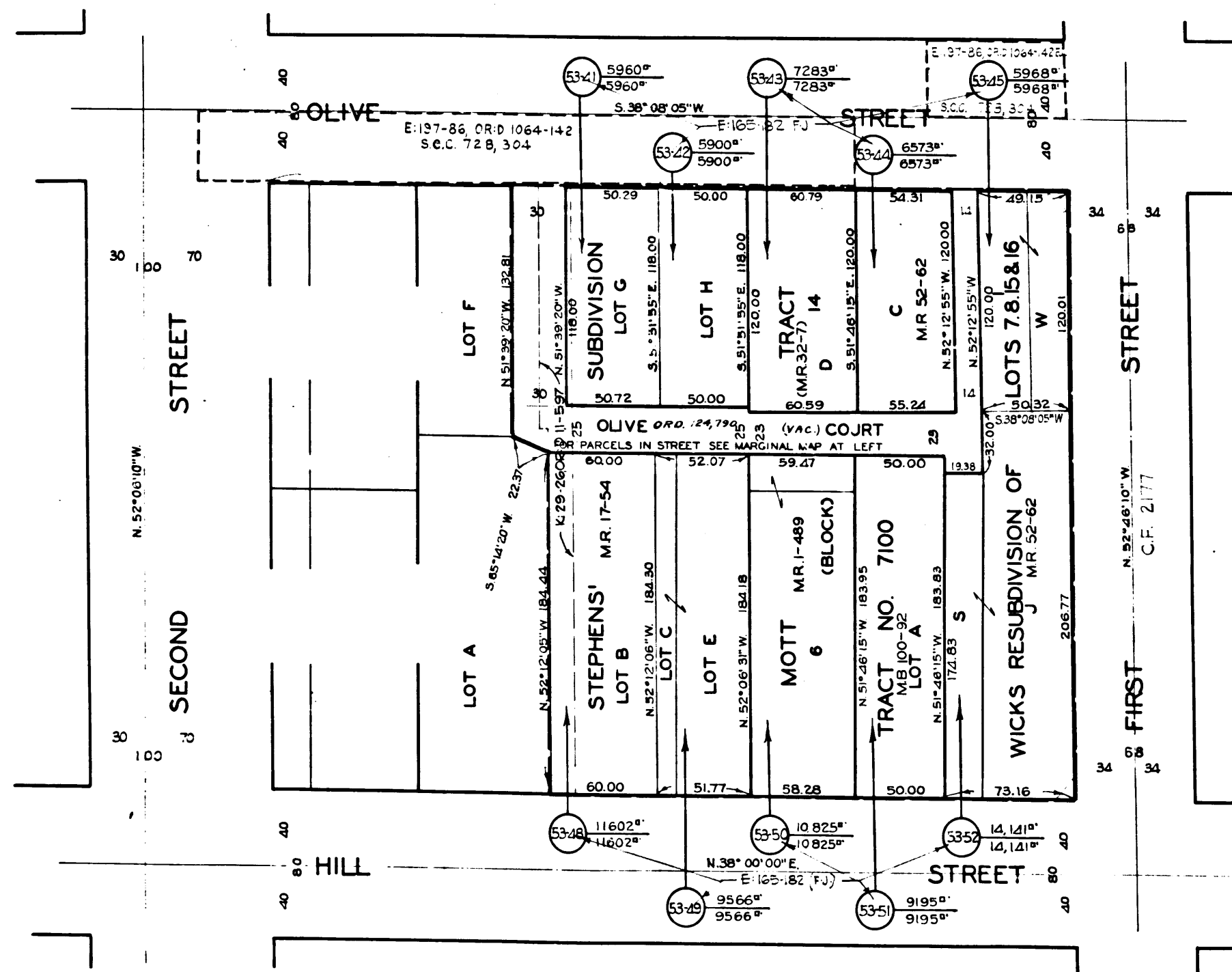


EXHIBIT 'A'  
 MAP SHOWING PROPERTY SOUGHT TO BE ACQUIRED  
 FOR  
**PUBLIC PURPOSES**  
 JOHN A. LAMBIE, COUNTY ENGINEER  
 JUNE, 1957  
**LEGEND**  
 NUMBERS IN CIRCLES REPRESENT PARCELS SOUGHT TO BE ACQUIRED.  
 PARCELS FOR PROPOSED PUBLIC PURPOSES OUTLINED IN RED.

AREAS SHOWN THUS: 0000 = AREA OF PARCEL IN SQUARE FEET.  
 00000 = AREA OF HOLDING IN SQUARE FEET OR ACRES.

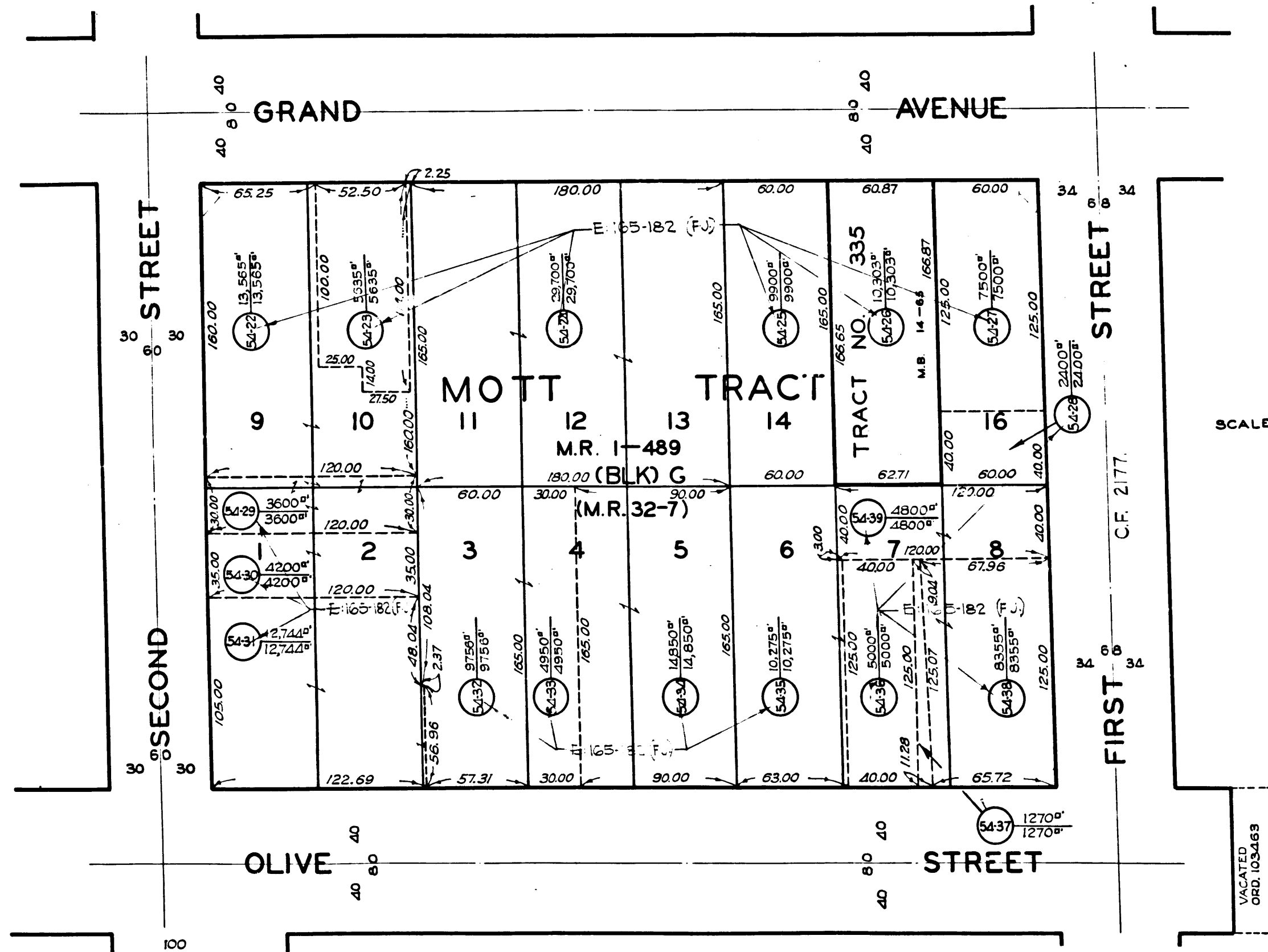
DRAWN BY	DATE	CHECKED BY	DATE	CALCULATED BY	DATE	CHECKED BY	DATE
THOMPSON	5-57	FARMER	6-57	THOMPSON	5-57	FARMER	6-57

ALIGNMENT: R.S. 34-17, M.B. 100-32  
 TOPOGRAPHY: NOT SHOWN  
 INDEX MAP: 8 (D-3)  
 ASSESSOR BOOK: 246  
 REVISIONS:  
 JOB NO. 002100  
**CIVIC CENTER UNIT 53**  
 ONE SHEET

C.F. 2449 1-3

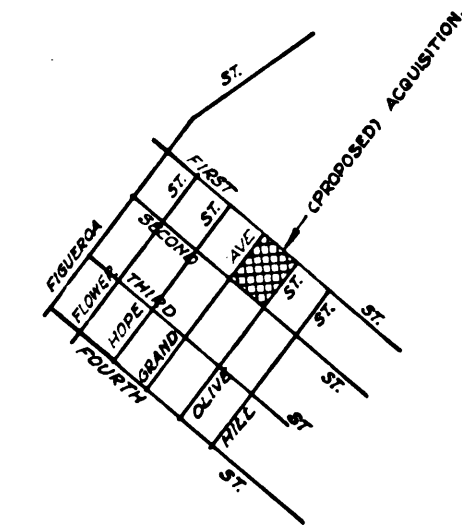
Superior Court Case No. 658447  
 Suit for Condemnation  
 Filed April 4, 1956  
 County of Los Angeles, Plaintiff  
 VS  
 Anna Anderson, et al, Defendants  
 FOR CURRENT STATUS  
 SEE INDIVIDUAL PARCELS

SEE SHEET 3.



SEE SHEET 1

C.F. 2449 2-3



VICINITY MAP  
 NOT TO SCALE  
 IN THE CITY OF  
 LOS ANGELES

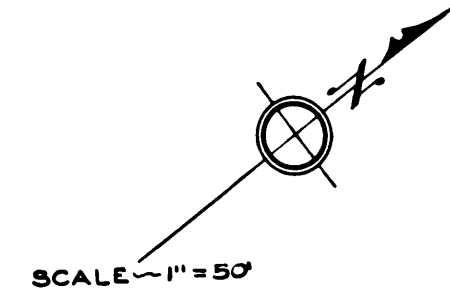


EXHIBIT 'W'  
 MAP SHOWING PROPERTY SOUGHT TO BE ACQUIRED  
 FOR  
**PUBLIC PURPOSES**  
 JOHN A. LAMBIE, COUNTY ENGINEER  
 JANUARY, 1957

**LEGEND**  
 NUMBERS IN CIRCLES REPRESENT PARCELS SOUGHT TO BE ACQUIRED.  
 PARCELS FOR PROPOSED PUBLIC PURPOSES OUTLINED IN RED.

AREAS SHOWN THUS: 0000 = AREA OF PARCEL IN SQUARE FEET  
 00000 = AREA OF HOLDING IN SQUARE FEET OR ACRES

DRAWN BY	DATE	CHECKED BY	DATE	CALCULATED BY	DATE	CHECKED BY	DATE
THOMPSON	11-56	FARMER	1-57	THOMPSON	11-56	FARMER	1-57

ALIGNMENT: M.R. 32-7  
 TOPOGRAPHY: NOT SHOWN  
 INDEX MAP: 9 (D-3)  
 ASSESSOR BOOK: 246

REVISIONS:  
 JOB NO. 0021.00

CIVIC CENTER UNIT **(54)**  
 ONE SHEET

I.M. N° 0