

Superior Court Case No. 666762
 Suit for Condemnation
 Filed Sept. 18, 1956
 County of Los Angeles, Plaintiff
 VS
 Elsie C. Aird, et al., Defendants
 FOR CURRENT STATUS
 SEE INDIVIDUAL PARCELS

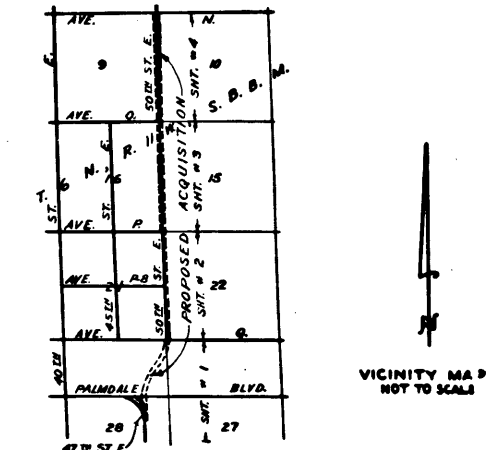
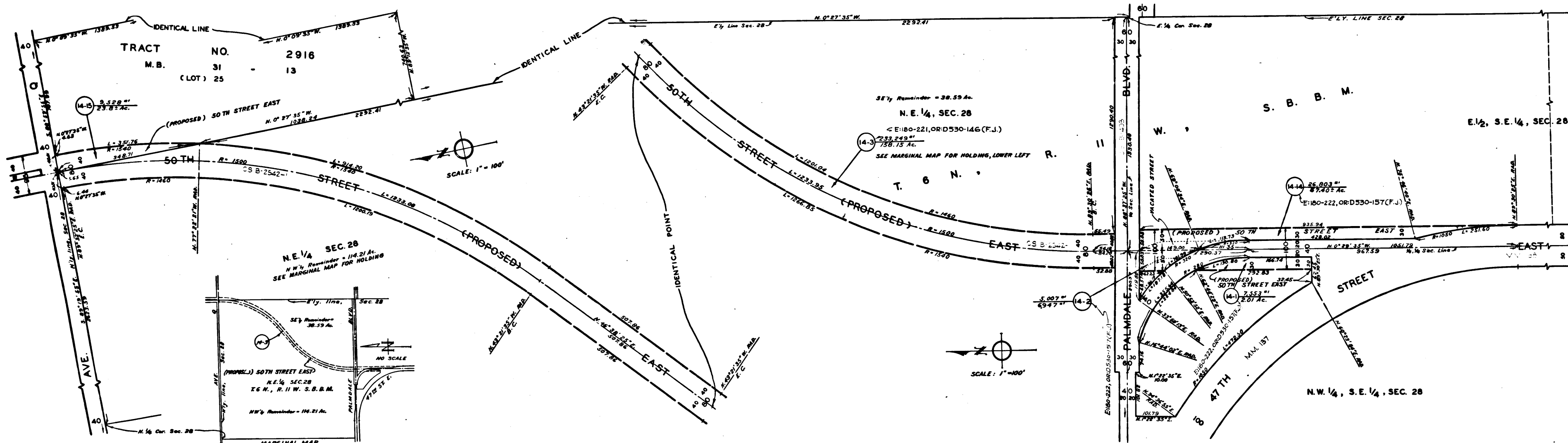


EXHIBIT "A"
 MAP SHOWING PROPERTY SOUGHT TO BE ACQUIRED
 FOR THE OPENING AND WIDENING
 OF
50TH STREET EAST
 JOHN A. LAMBIE, COUNTY ENGINEER. MAY, 1956
 LEGEND
 NUMBERS IN CIRCLES REPRESENT PARCELS SOUGHT TO BE ACQUIRED.
 PARCELS FOR PROPOSED HIGHWAY EASEMENTS SHOWN IN RED.

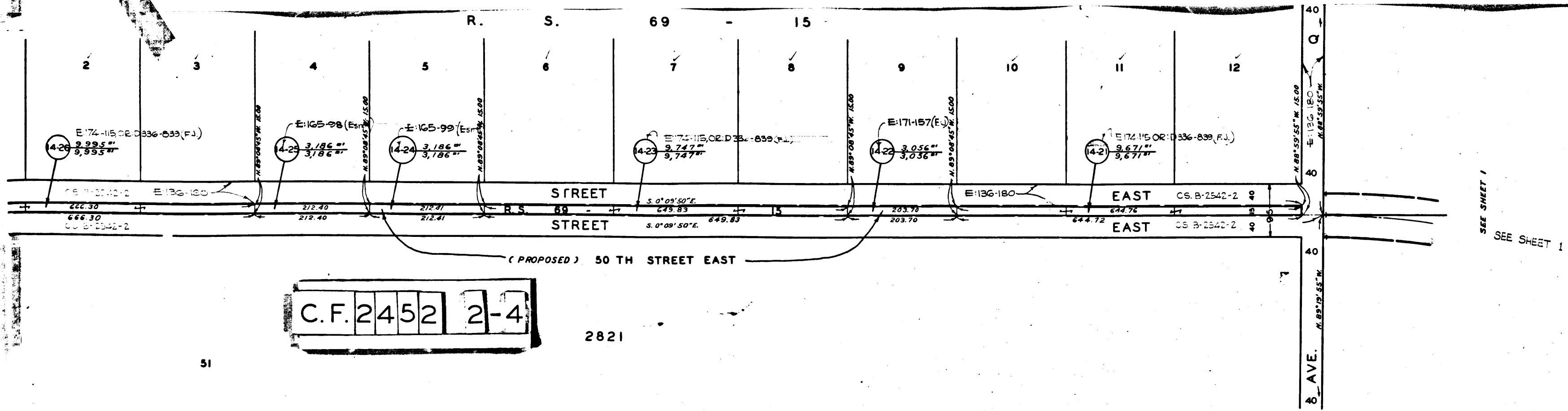
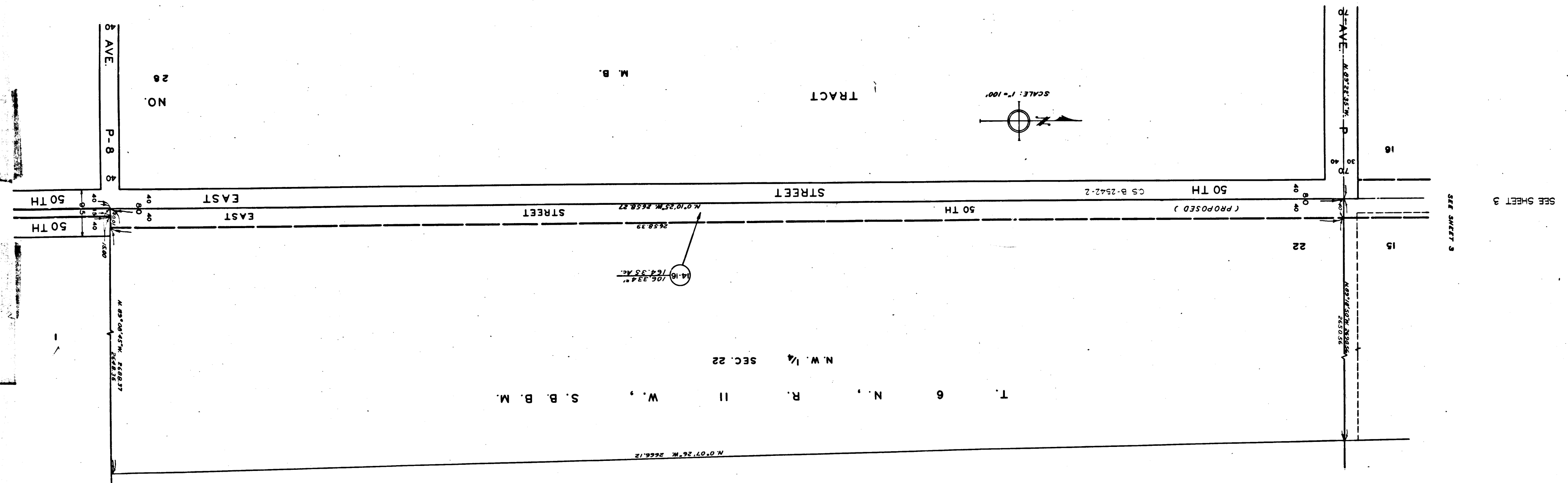
AREAS SHOWN THUS: 0000 = AREA OF PARCEL IN SQUARE FEET
 00000 = AREA OF HOLDING IN SQUARE FEET OR ACRES

DRAWN BY	DATE	CHECKED BY	DATE	CALCULATED BY	DATE	CHECKED BY	DATE
ANDERSEN	4-56	RUSH	5-56	S.R.H.R. K.A.	4-56	K.A. & S.R.	4-56

ALIGNMENT: C.S. 2342 & C.S. 8738 REVISIONS:
 TOPOGRAPHY: NOT SHOWN
 INDEX MAP: 53 (C-1-2-3)
 ASSESSOR BOOK: 124 (21 & 173) JOB NO. 0908 08

50TH STREET EAST
 SHEET 1 OF 4 SHEETS

C.F. 2452 11-4



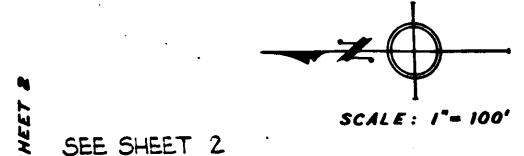
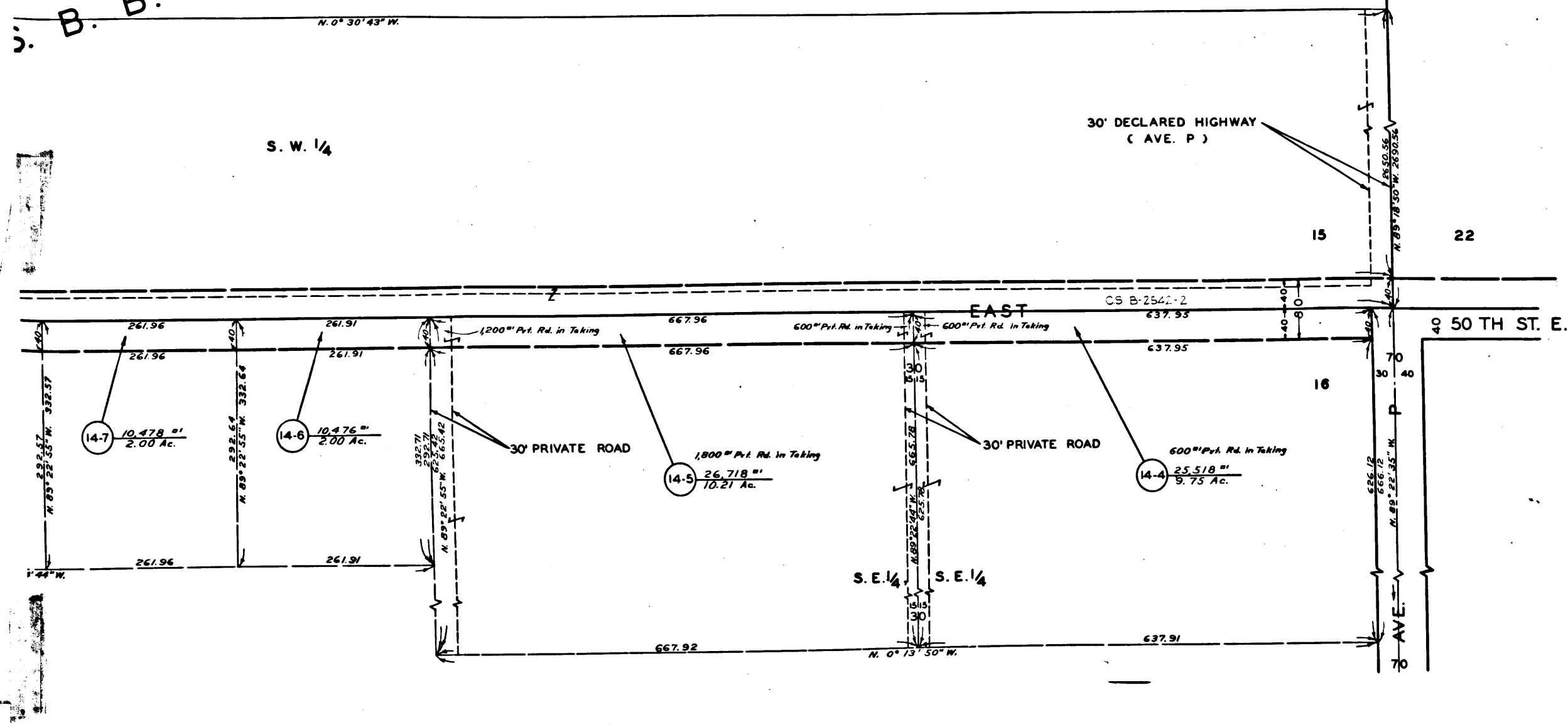
C.F. 2452 2-4

2821

51

DRAWN BY	DATE	CHECKED BY	DATE	CALCULATED BY	DATE	CHECKED BY	DATE
ANDERSEN	4-36	RUSH	5-58	S.R., H.R., K.A.	4-36	K.A. & S.R.	4-36
ALIGNMENT: C.S.B-2542 & C.S. 9738 REVISIONS: TOPOGRAPHY: NOT SHOWN INDEX MAP: 65 (C-1-2-3) ASSESSOR BOOK: 124 (21) & 173 JOB NO.: 0808.06							
50 TH STREET EAST							
SHEET 2 OF 4 SHEETS							

S. B. B. M.



SEE SHEET 2

DRAWN BY	DATE	CHECKED BY	DATE	CALCULATED BY	DATE	CHECKED BY	DATE
ANDERSEN	4-58	RUSH	5-58	S.R. H.R. K.A.	4-58	K.A. & S.R.	4-58

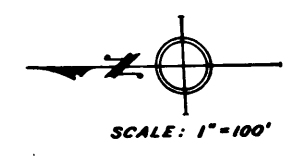
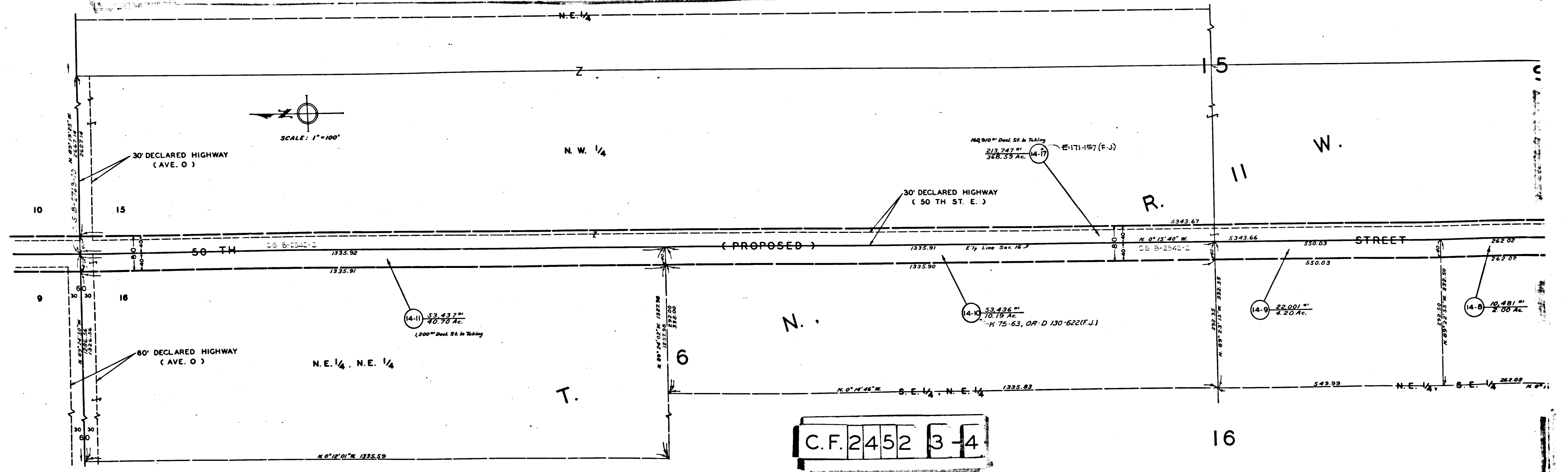
ALIGNMENT: C.S.B-2542 & C.S. 8738 REVISIONS.
 TOPOGRAPHY: NOT SHOWN
 INDEX MAP: 85 (C-1-2-3)
 ASSESSOR BOOK: 124 (218 173) JOB NO.: 0908.08

50 TH STREET EAST (4)
 SHEET 3 OF 4 SHEETS

INDEX 65

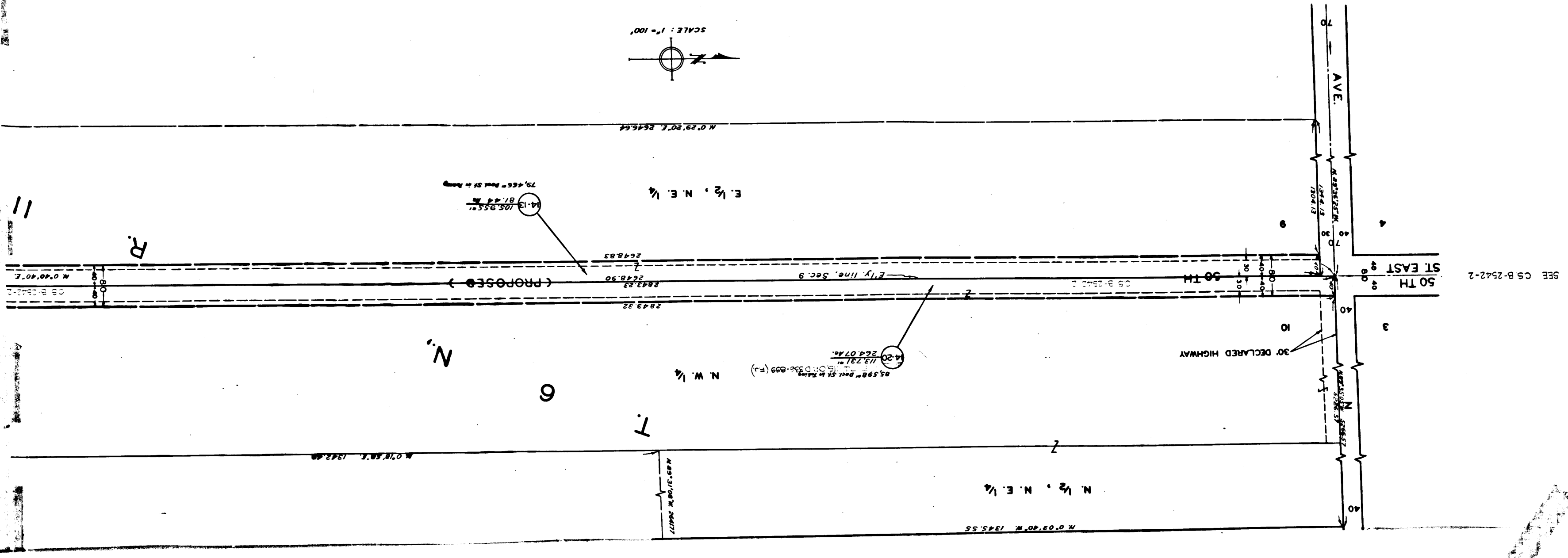
SEE SHEET 4

SEE SHEET 4

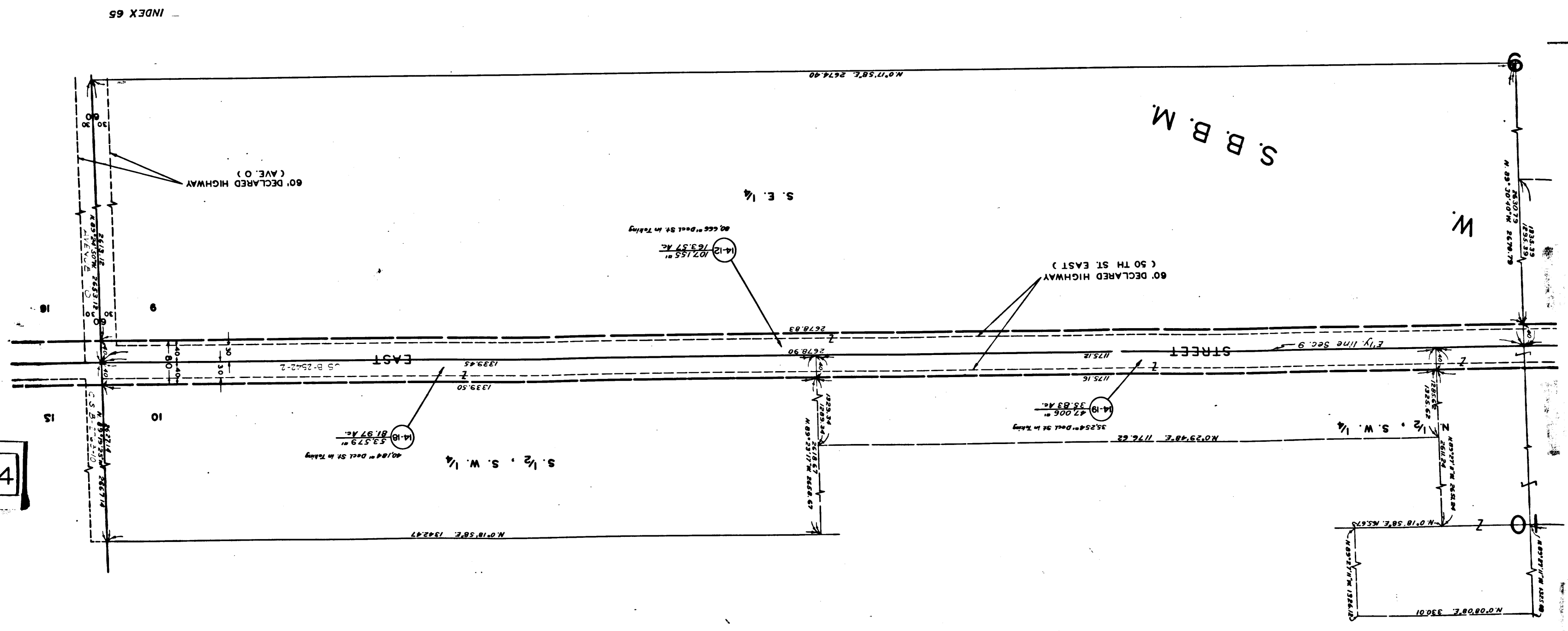


C.F. 2452 3-4

16



SEE CS-B-2542-2



INDEX 65

SEE SHEET 3

C.F. 2452 4-4