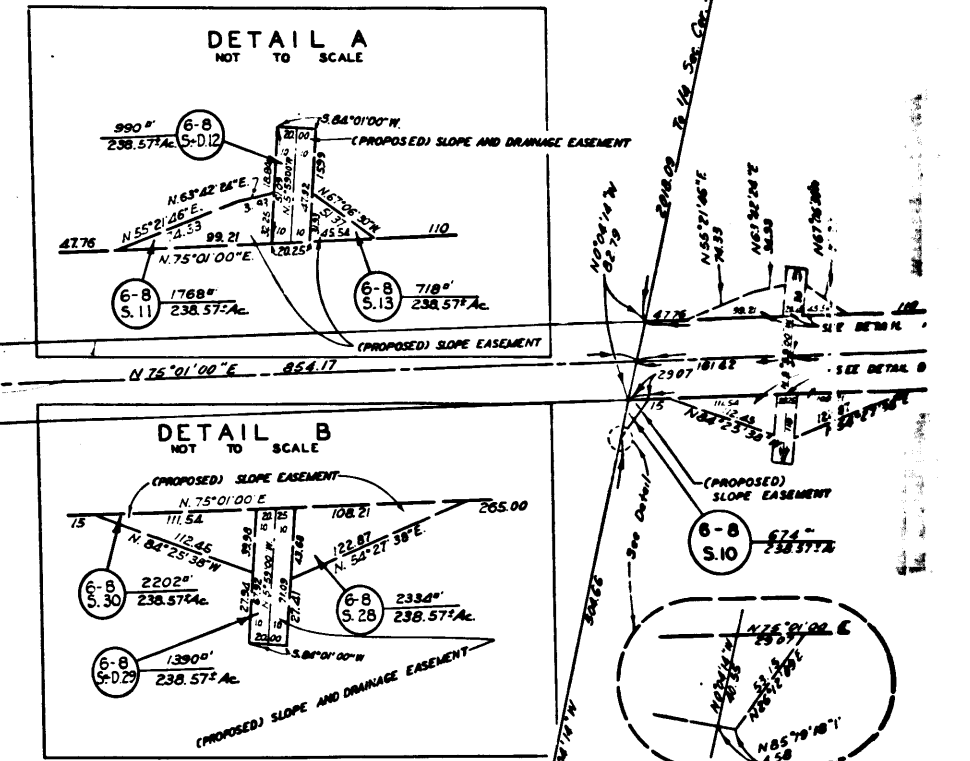
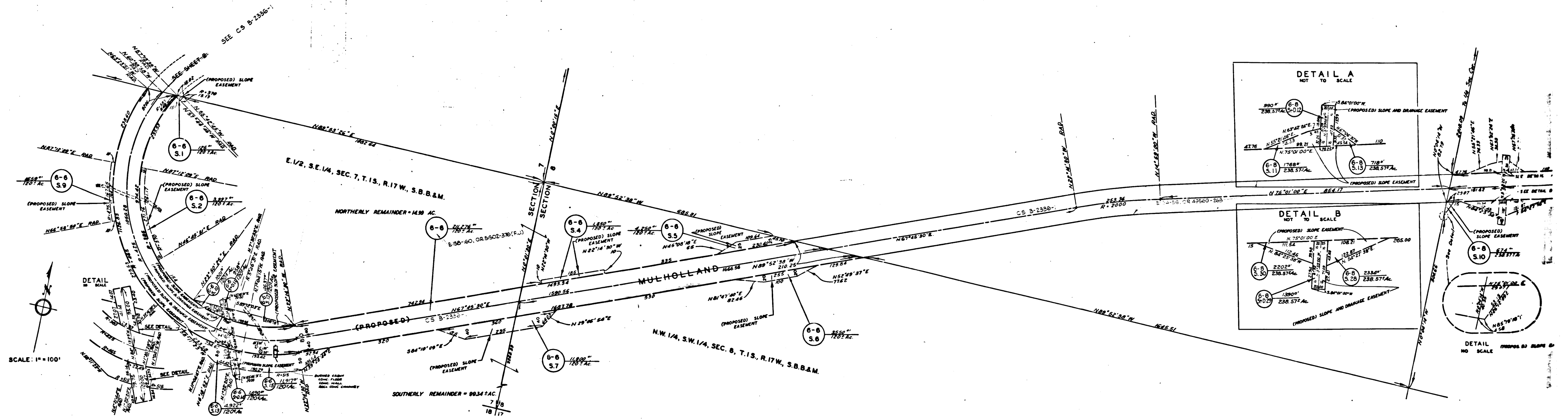
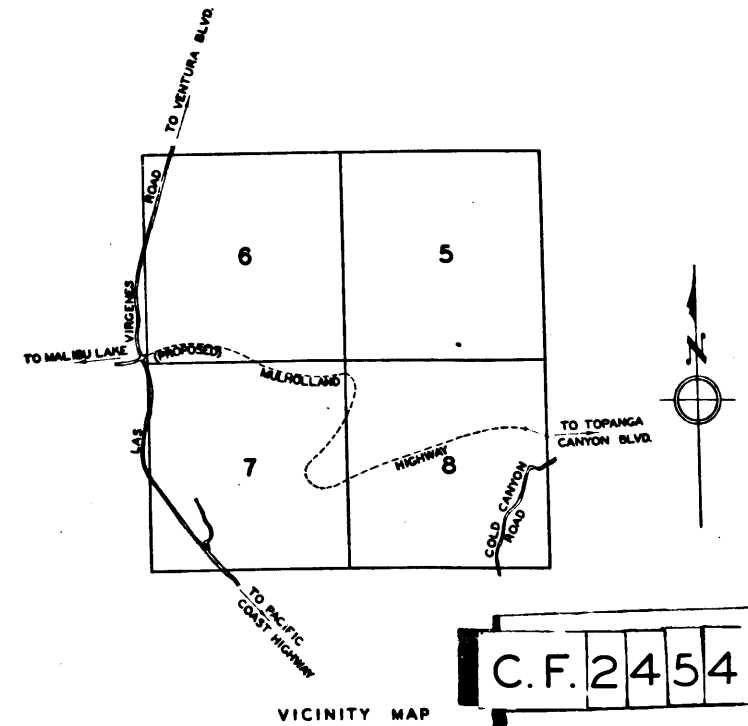
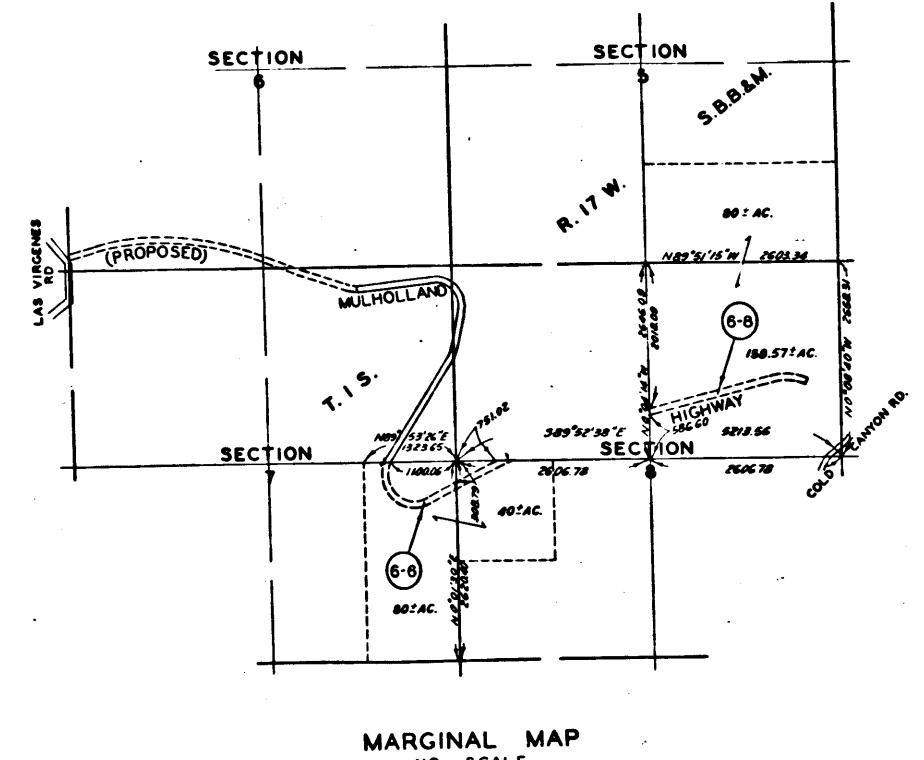
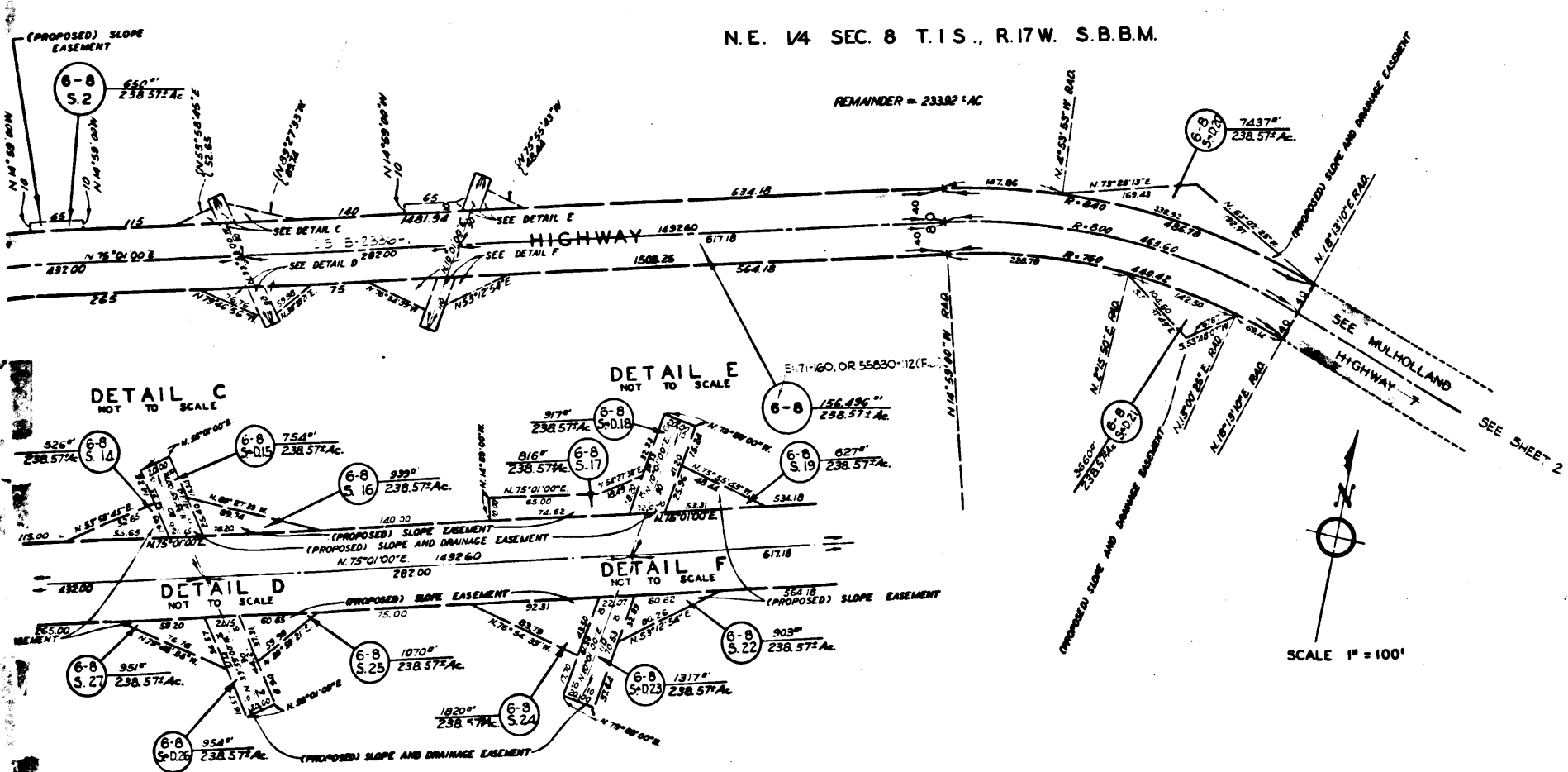


C.F. 2454 2-3

DRAWN BY	DATE	CHECKED BY	DATE	CALCULATED BY	DATE	CHECKED BY	DATE
J.S. & R.F.	11-54	MIKURIYA	11-54	SAUNDERS	7-54	R.F. & Y.M.	11-54
REFERENCES				REVISIONS			
ALIGNMENT: C.S.B. 2336-2							
TOPOGRAPHY: SEE SKETCH IN FILE C.S.B. 2226-3-4							
J.N. 0902.70				ASSESSOR BOOK 131			
INDEX MAP 59(B-3)				SHEET 2 OF 2 SHEETS			
INDEX 90							



FOR EXTENT OF HOLDINGS OF PARCELS (6-6) - (6-8) SEE MARGINAL MAP TO RIGHT



C.F. 2454 3-3

EXHIBIT  
MAP SHOWING PROPERTY TO BE ACQUIRED FOR THE OPENING OF

**MULHOLLAND HIGHWAY**

WILLIAM J. FOX COUNTY SURVEYOR  
OCTOBER 1914

**LEGEND**  
NUMBERS IN CIRCLES REPRESENT PARCELS SOUGHT TO BE ACQUIRED FOR HIGHWAY PURPOSES  
PORTIONS COLORED RED SHOW EASEMENTS SOUGHT TO BE ACQUIRED FOR HIGHWAY PURPOSES  
PORTIONS COLORED YELLOW SHOW EASEMENTS SOUGHT TO BE ACQUIRED FOR SLOPE PURPOSES  
PORTIONS COLORED GREEN SHOW EASEMENTS SOUGHT TO BE ACQUIRED FOR SLOPE AND DRAINAGE PURPOSES  
AREAS OF PARCELS SOUGHT TO BE ACQUIRED FOR SLOPE AND DRAINAGE PURPOSES  
00000 = AREA OF PARCELS IN SQUARE FEET OR ACRES  
THUS = AREA OF HOLDINGS IN SQUARE FEET OR ACRES

DATE	CHECKED BY	DATE	CHECKED BY
10-24-14	W. J. FOX	10-24-14	W. J. FOX

REFERENCES  
ALIGNMENT: C.S. 8-2338-1-1

TOPOGRAPHY: C.S. 8-2228-1-2

J.N. 090270

INDEX MAP 59 A-B-3

MULHOLLAND HIGHWAY

SHEET 1 OF 2 SHEETS

INDEX 50-22