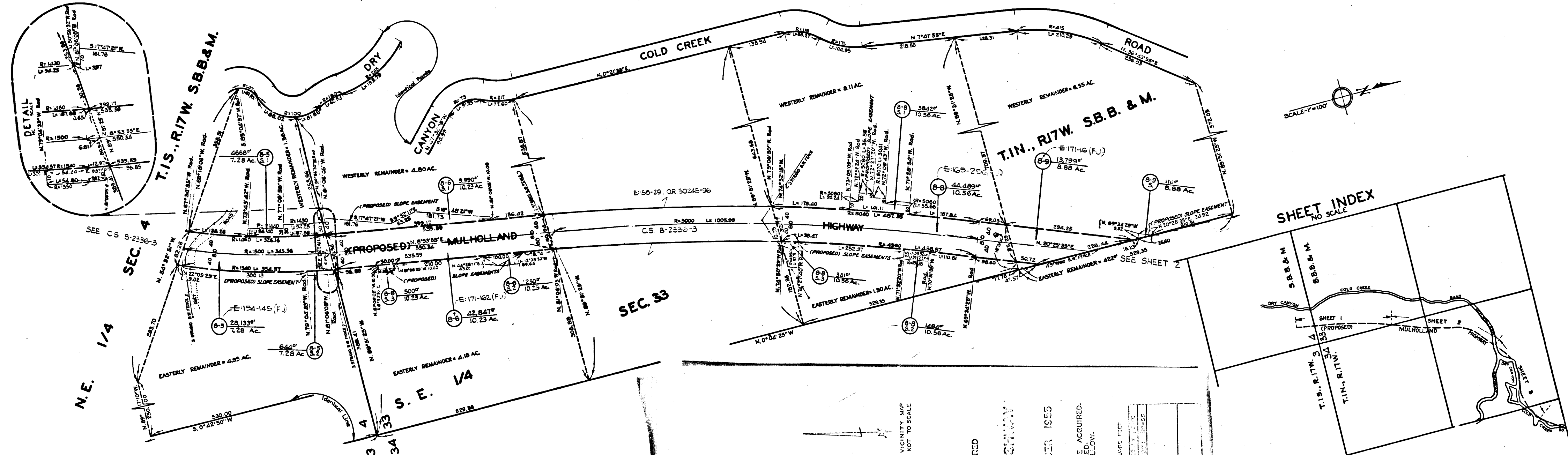


Superior Court Case No. 656035
 Suit for Condemnation
 Filed Feb. 16, 1956
 County of Los Angeles, Plaintiff
 VS
 John F. Gensley, et al, Defendants
 FOR CURRENT STATUS
 SEE INDIVIDUAL PARCELS

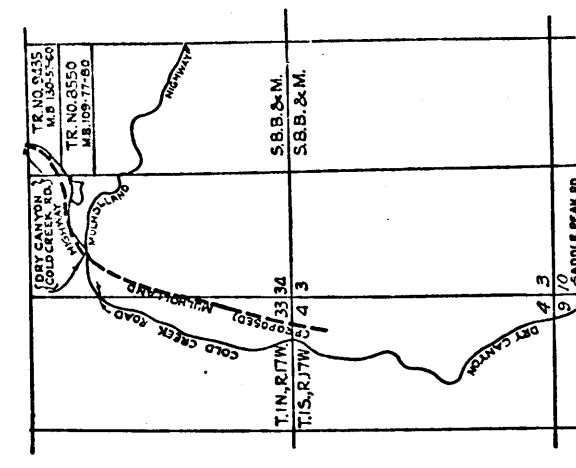


N.E. 1/4
 SEC. 4

T.1S., R.17W. S.B.&M.

SEC. 33

C.F. 2455 1-3



VICINITY MAP
 NOT TO SCALE

EXHIBIT 'A'
 MAP SHOWING PROPERTY SOUGHT TO BE ACQUIRED
 FOR THE OPENING AND WIDENING
 OF
 MULHOLLAND
 HIGHWAY

JOHN A. LAMBIE COUNTY ENGINEER OCTOBER, 1955

LEGEND

NUMBERS IN CIRCLES REPRESENT PARCELS SOUGHT TO BE ACQUIRED.
 ALIGNED HIGHWAY EASEMENTS SHOWN IN RED.
 PARCELS FOR PROPOSED SLOPE EASEMENTS SHOWN IN YELLOW.

AREAS SHOWN THIS: 48800 = AREA OF PARCELS IN SQUARE FEET; 61 = SQUARE FEET

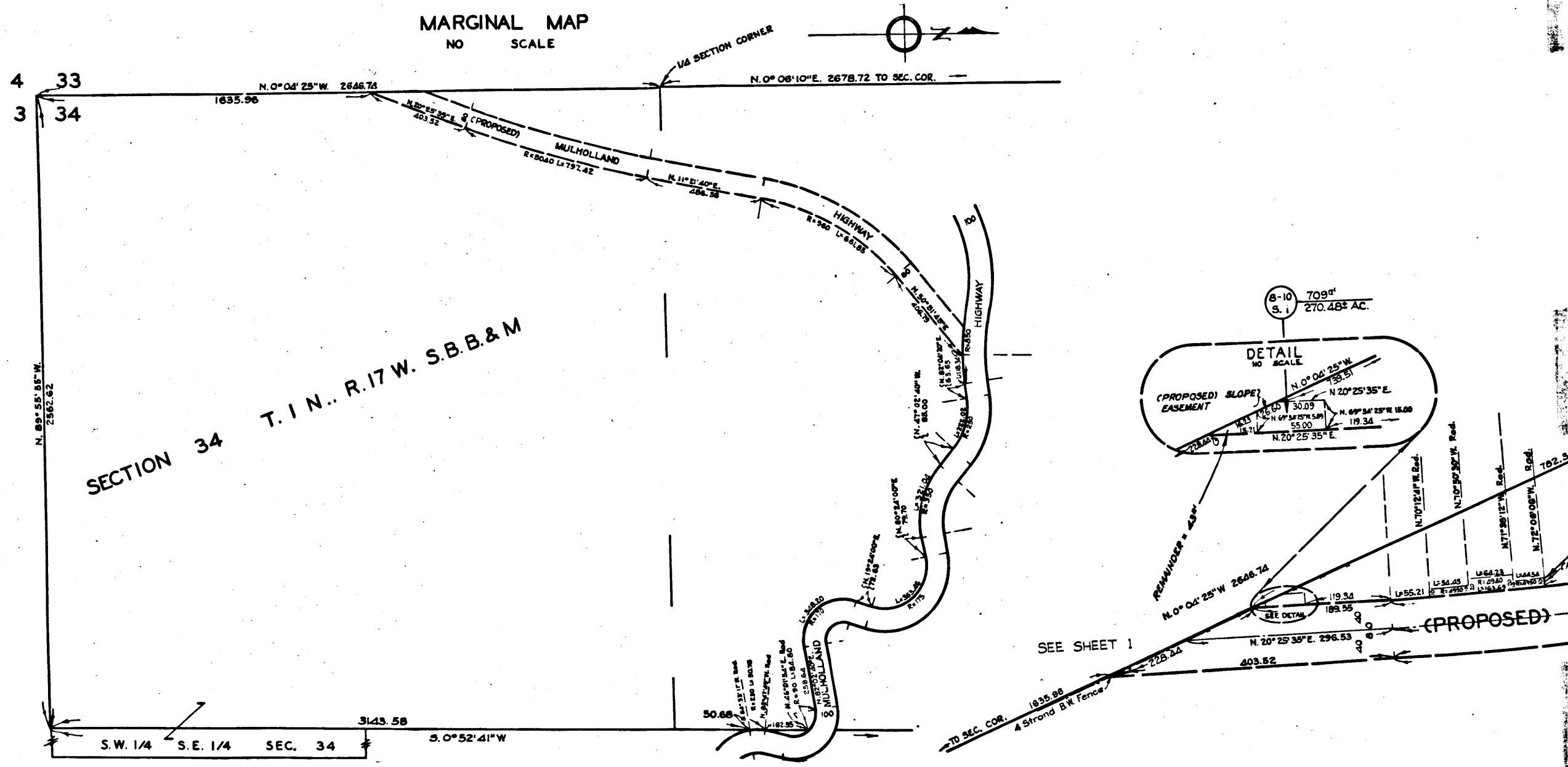
DRAWN BY	DATE	CHECKED BY	DATE	CALCULATED BY	DATE
THOMPSON	10-31	ANDERSON	10-31	ANDERSON	11-22
ALIGNED	10-31	ANDERSON	10-31	ANDERSON	11-22
INDEX MAP	10-31	ANDERSON	10-31	ANDERSON	11-22
ASSESSOR BOOK	10-31	ANDERSON	10-31	ANDERSON	11-22

JOB NO. 050270
 MULHOLLAND HIGHWAY
 SHEET 1 OF 3 SHEETS

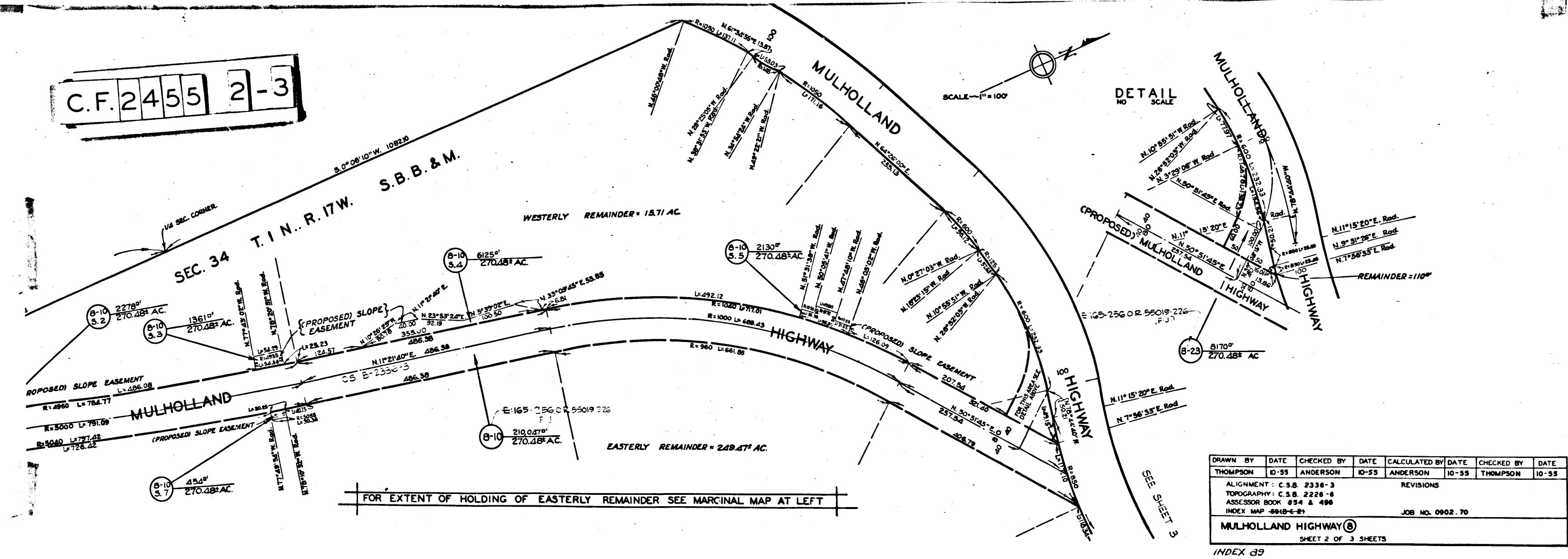
SHEET INDEX
 NO SCALE

MAP
 MULHOLLAND
 JOHN A. LAMBIE
 NUMBERS IN CIRCLES
 REPRESENT PARCELS
 SOUGHT TO BE ACQUIRED.
 ALIGNED HIGHWAY
 EASEMENTS SHOWN IN
 RED. PARCELS FOR
 PROPOSED SLOPE
 EASEMENTS SHOWN IN
 YELLOW.

MARGINAL MAP
NO SCALE



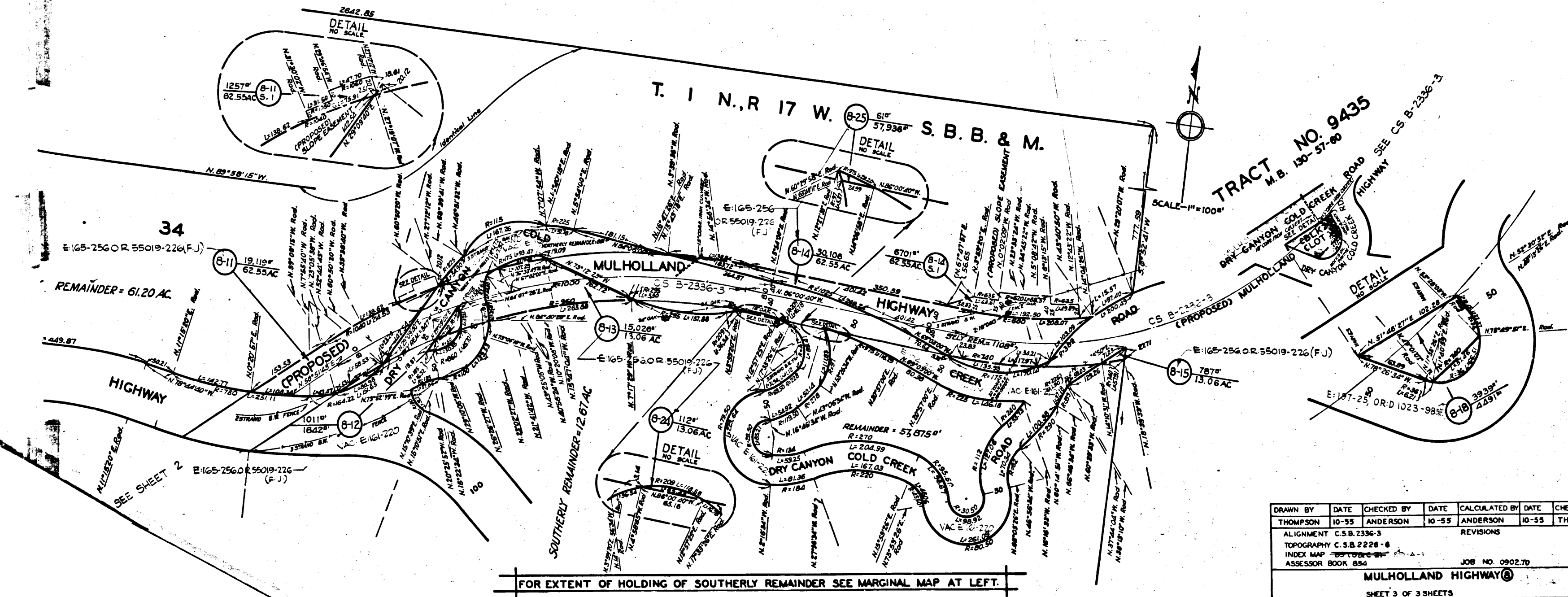
C.F. 2455 2-3



DRAWN BY	DATE	CHECKED BY	DATE	CALCULATED BY	DATE	CHECKED BY	DATE
THOMPSON	10-55	ANDERSON	10-55	ANDERSON	10-55	THOMPSON	10-55

ALIGNMENT: C.S.B. 2338-3
 TOPOGRAPHY: C.S.B. 2228-8
 ASSESSOR BOOK: 854 & 498
 INDEX MAP: 4010-E-21

MULHOLLAND HIGHWAY (H)
 SHEET 2 OF 3 SHEETS



DRAWN BY	DATE	CHECKED BY	DATE	CALCULATED BY	DATE	CHECKED BY	DATE
THOMPSON	10-55	ANDERSON	10-55	ANDERSON	10-55	THOMPSON	10-55

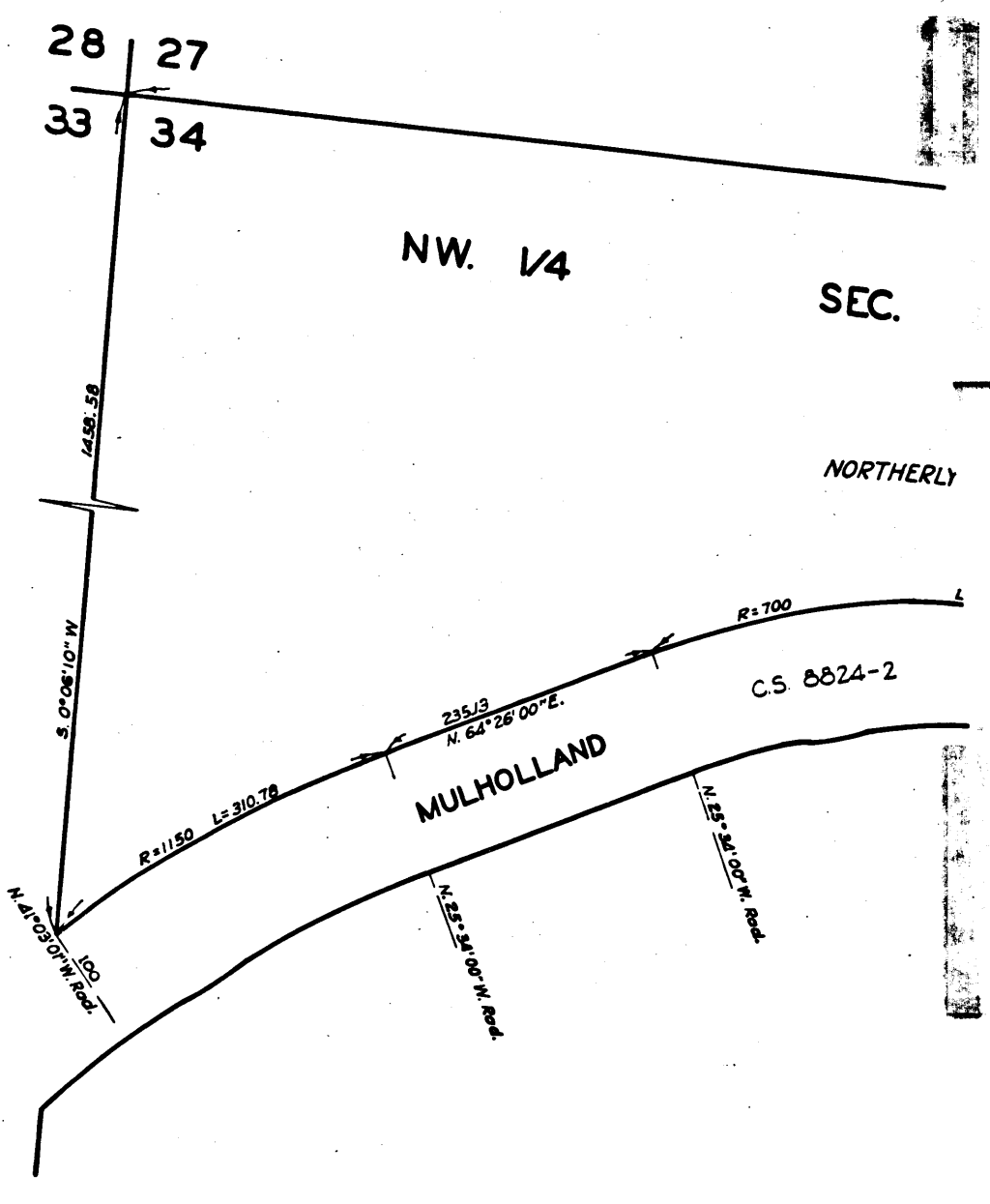
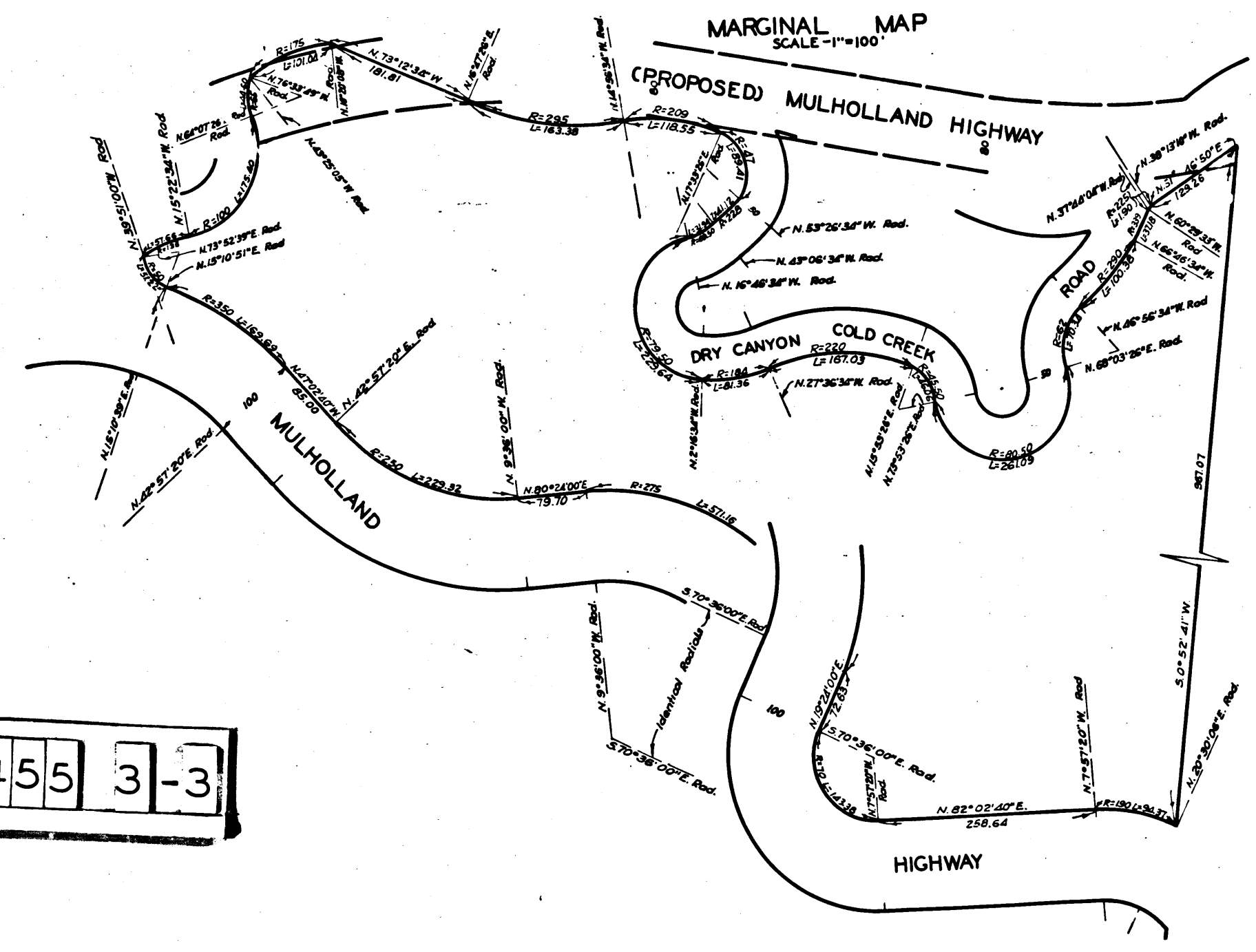
ALIGNMENT C.S.B. 2336-3
 TOPOGRAPHY C.S.B. 2226-6
 INDEX MAP 88-100-0-0-0
 ASSESSOR BOOK 836

REVISIONS

JOB NO. 0902.70

MULHOLLAND HIGHWAY

SHEET 3 OF 3 SHEETS



C.F. 2455 3-3