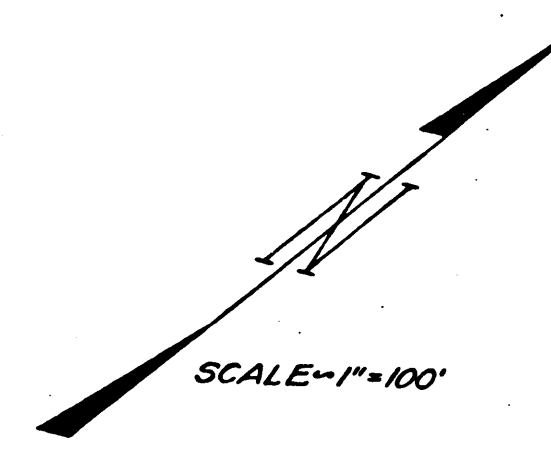
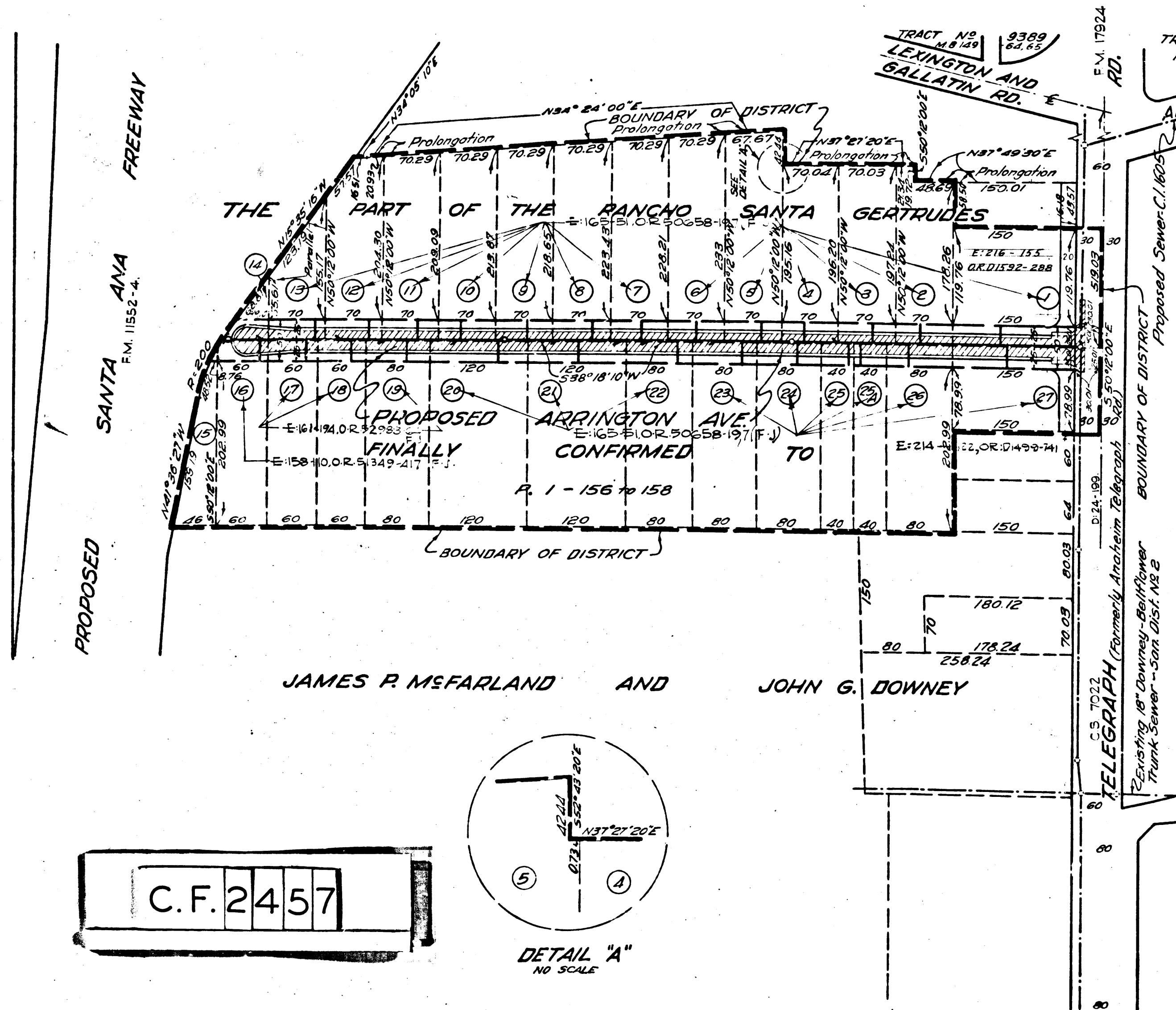


Superior Court Case No. 637052
 Suit for Condemnation
 Filed Dec. 2, 1954
 County of Los Angeles, Plaintiff
 VS
 R. K. Weatherby, et al, Defendants
 FOR CURRENT STATUS
 SEE INDIVIDUAL PARCELS



**COUNTY IMPROVEMENT NO. 1420M
 (ARRINGTON AVENUE)**

DIAGRAM SHOWING THE RIGHTS OF WAY TO BE ACQUIRED, THE PROPOSED ROAD AND SEWER IMPROVEMENT, THE EXTERIOR BOUNDARIES OF THE DISTRICT TO BE BENEFITED BY SAID ACQUISITION AND IMPROVEMENT AND ASSESSED TO PAY THE COST AND EXPENSES THEREOF.

WILLIAM J. FOX COUNTY OF LOS ANGELES, CALIFORNIA COUNTY SURVEYOR

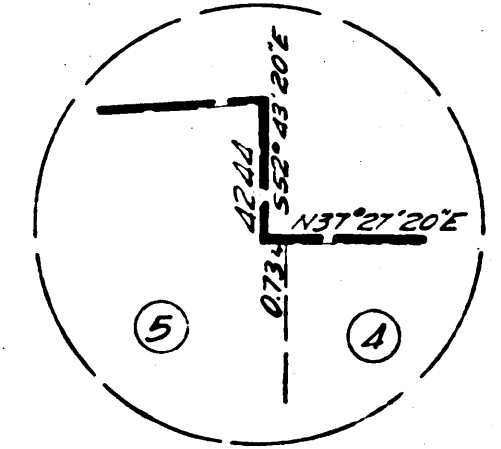
MARCH, 1954

SUBMITTED F. S. Sodde DIVISION ENGINEER APPROVED F. W. Pore ASS'T. CHIEF DEPUTY

LEGEND

PARCEL NUMBER	---	(27)
SEWER	---	
HOUSE CONNECTIONS	---	
Y BRANCHES	---	
MANHOLES	---	
CEMENT CONCRETE CURB	---	
CEMENT CONCRETE GUTTER	---	
PREMIX PAVEMENT ON AGGREGATE BASE	---	
PREMIX BERM	---	
RIGHTS OF WAY TO BE ACQUIRED	---	

C.F. 2457



DETAIL "A"
 NO SCALE

CHECKED	ROBERTSON	MARCH 1954
DRAWN	DETWEILER	NOV 1953
INDEX 33	AMB 99A-2	DOWNEY