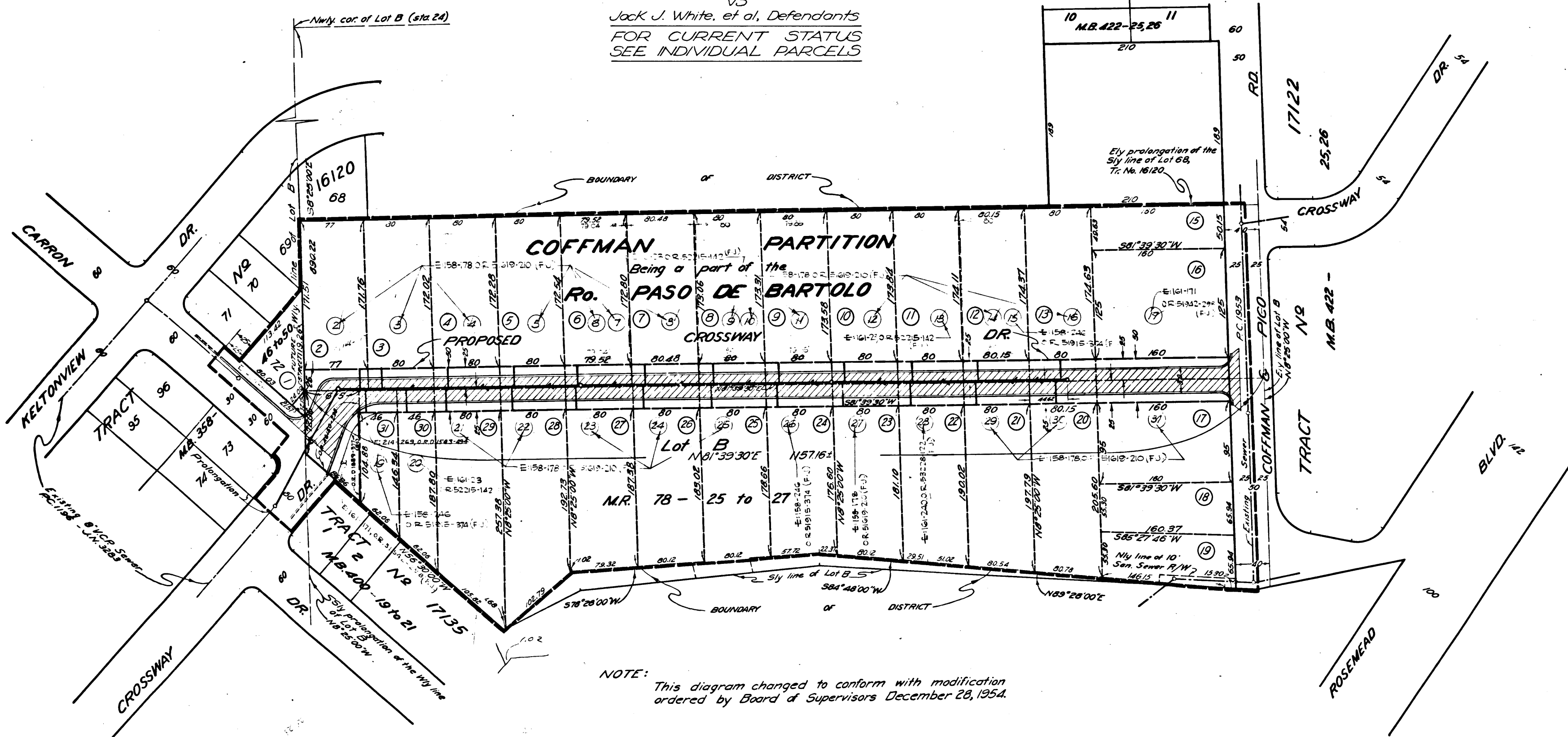
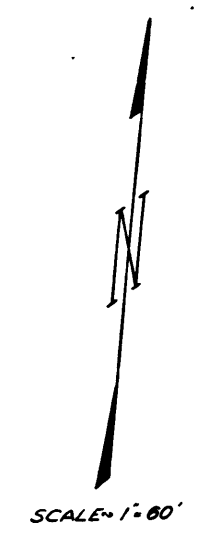


Superior Court Case No. 644126
 Suit for Condemnation
 Filed May 13, 1955
 County of Los Angeles, Plaintiff
 VS
 Jack J. White, et al, Defendants
 FOR CURRENT STATUS
 SEE INDIVIDUAL PARCELS



NOTE: This diagram changed to conform with modification ordered by Board of Supervisors December 28, 1954.

C.F. 2458



COUNTY IMPROVEMENT NO. 1502 M
 (CROSSWAY DRIVE)

DIAGRAM SHOWING THE RIGHTS OF WAY TO BE ACQUIRED, THE PROPOSED SEWER AND ROAD IMPROVEMENTS, THE EXTERIOR BOUNDARIES OF THE DISTRICT TO BE BENEFITED BY SAID ACQUISITION AND IMPROVEMENTS AND ASSESSED TO PAY THE COST AND EXPENSES THEREOF.

WILLIAM J. FOX COUNTY OF LOS ANGELES, CALIFORNIA COUNTY SURVEYOR

SUBMITTED *J. L. D...* DIVISION ENGINEER APPROVED *A. H. Gregory* CHIEF DEPUTY

PARCEL NUMBER	LEGEND
SEWER	
HOUSE CONNECTIONS	
Y BRANCHES	
MANHOLE	
CEMENT CONCRETE CURB	
CEMENT CONCRETE GUTTER	
RIGHTS OF WAY TO BE ACQUIRED	
PREAMP PAVEMENT	

I.M. 36

CHECKED	ROBERTSON	MAR 54
DRAWN	GSCHEIN	JAN 54
INDEX	36	AMB 79-1