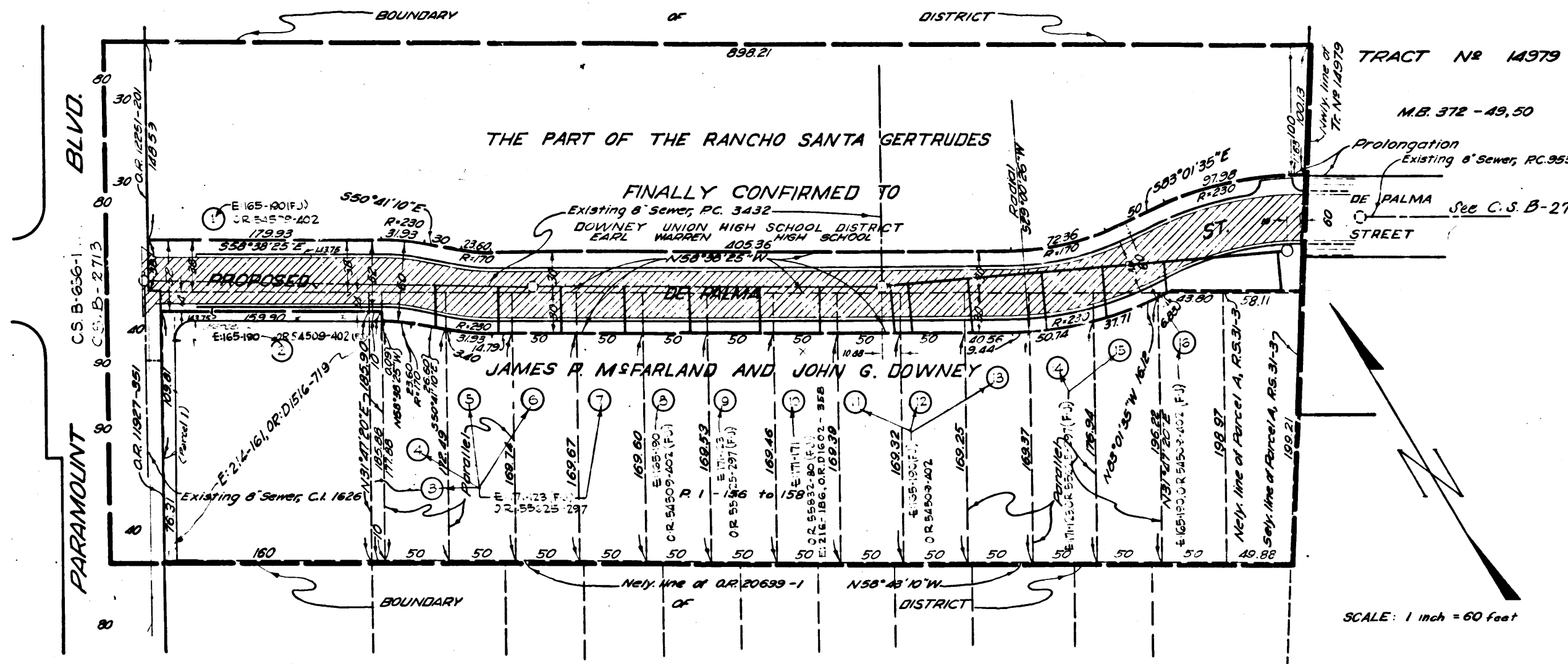


Superior Court Case No. 666302
 Suit for Condemnation
 Filed Sept. 7, 1956
 County of Los Angeles, Plaintiff
 VS
 Warren G. Day, et al, Defendants
 FOR CURRENT STATUS
 SEE INDIVIDUAL PARCELS



COUNTY IMPROVEMENT NO. 1848M
 (DE PALMA STREET)

DIAGRAM SHOWING THE RIGHTS OF WAY TO BE ACQUIRED, THE PROPOSED SEWER AND ROAD IMPROVEMENTS, THE EXTERIOR BOUNDARIES OF THE DISTRICT TO BE BENEFITED BY SAID ACQUISITION AND IMPROVEMENTS AND ASSESSED TO PAY THE COST AND EXPENSES THEREOF.

COUNTY OF LOS ANGELES, CALIFORNIA
 JOHN A. LAMBIE COUNTY ENGINEER
 SUBMITTED *W.H. Kella* DIVISION ENGINEER APPROVED *F.S. D...* CHIEF DEPUTY COUNTY ENGINEER

LEGEND

PARCEL NUMBER	(16)
CURB	_____
GUTTER	_____
PAVEMENT	_____
RIGHTS OF WAY TO BE ACQUIRED	_____
SEWER	_____
HOUSE LATERAL	_____
MANHOLE	_____

CHECKED	ROBERTSON	MAY 1956
DRAWN	ANDERSON	DEC. 1954
INDEX	AND 851	DOWNEY

For survey of alignment see C.S.B-2713 I.M. 33

C.F. 2459