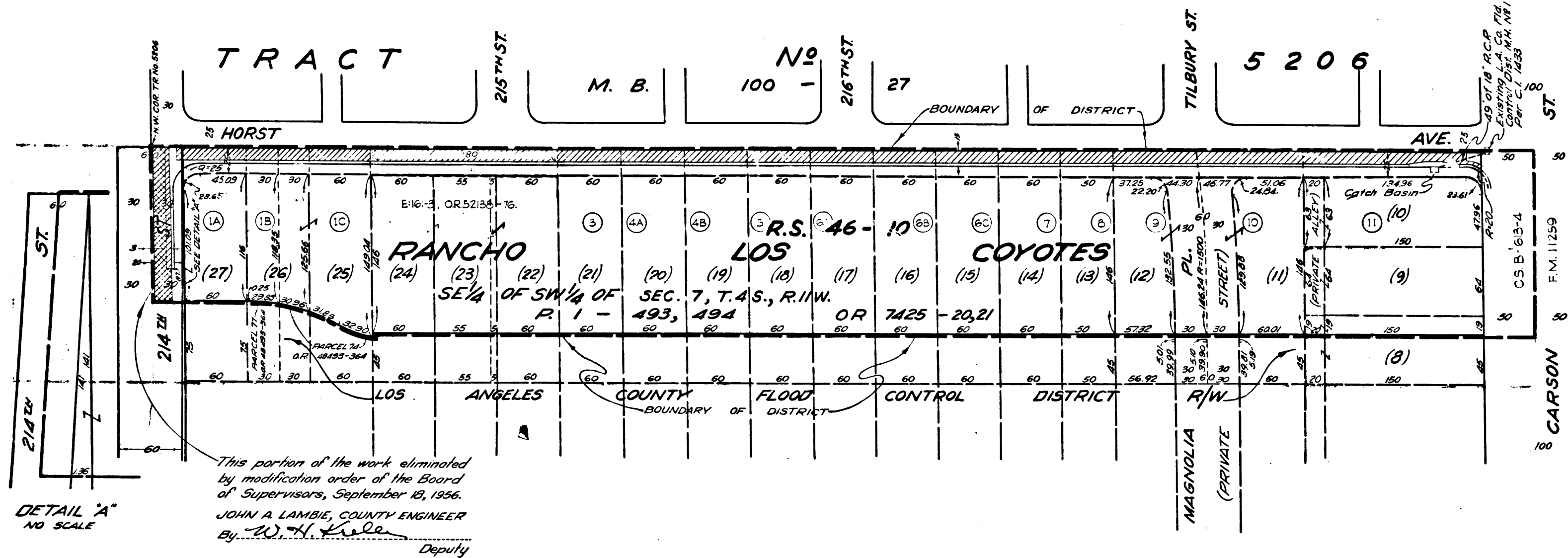


Superior Court Case No. 668438
 Suit for Condemnation
 Filed Oct. 22, 1956
 County of Los Angeles, Plaintiff
 VS
 Robert W. Smith, et al, Defts.
 FOR CURRENT STATUS
 SEE INDIVIDUAL PARCELS

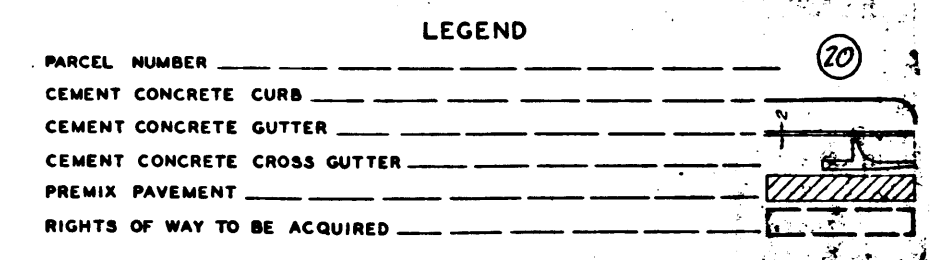
All parcels in Red to County as per
 K:9-62, OR. 56347-334 (F.J.)



SCALE: 1 IN. = 60 FT.
 COUNTY IMPROVEMENT NO. 1849M
 (HORST AVENUE)

DIAGRAM SHOWING THE RIGHTS OF WAY TO BE ACQUIRED, THE PROPOSED ROAD IMPROVEMENT, THE EXTERIOR BOUNDARIES OF THE DISTRICT TO BE BENEFITED BY SAID ACQUISITION AND IMPROVEMENT AND ASSESSED TO PAY THE COST AND EXPENSES THEREOF.
 COUNTY OF LOS ANGELES, CALIFORNIA
 JOHN A. LAMBIE COUNTY ENGINEER

SUBMITTED *W.H. Kelle* DIVISION ENGINEER APPROVED *J.A. Lambie* CHIEF DEPUTY COUNTY ENGINEER



CHECKED	ROBERTSON	MAY, 1956	CHECKED BY	ROBERTSON	MAY, 1956
REVISED	GSCHWIND	DEC., 1954	DRAWN BY	R.L. GREEN	MAY, 1953
			INDEX	31 A.M.B. 475	ART 1014

I.I. 31 10-12

C.F. 2460