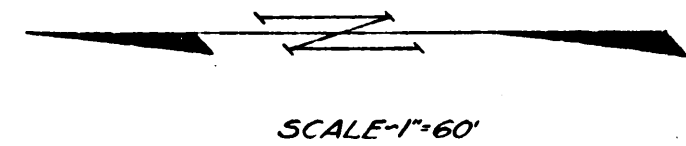
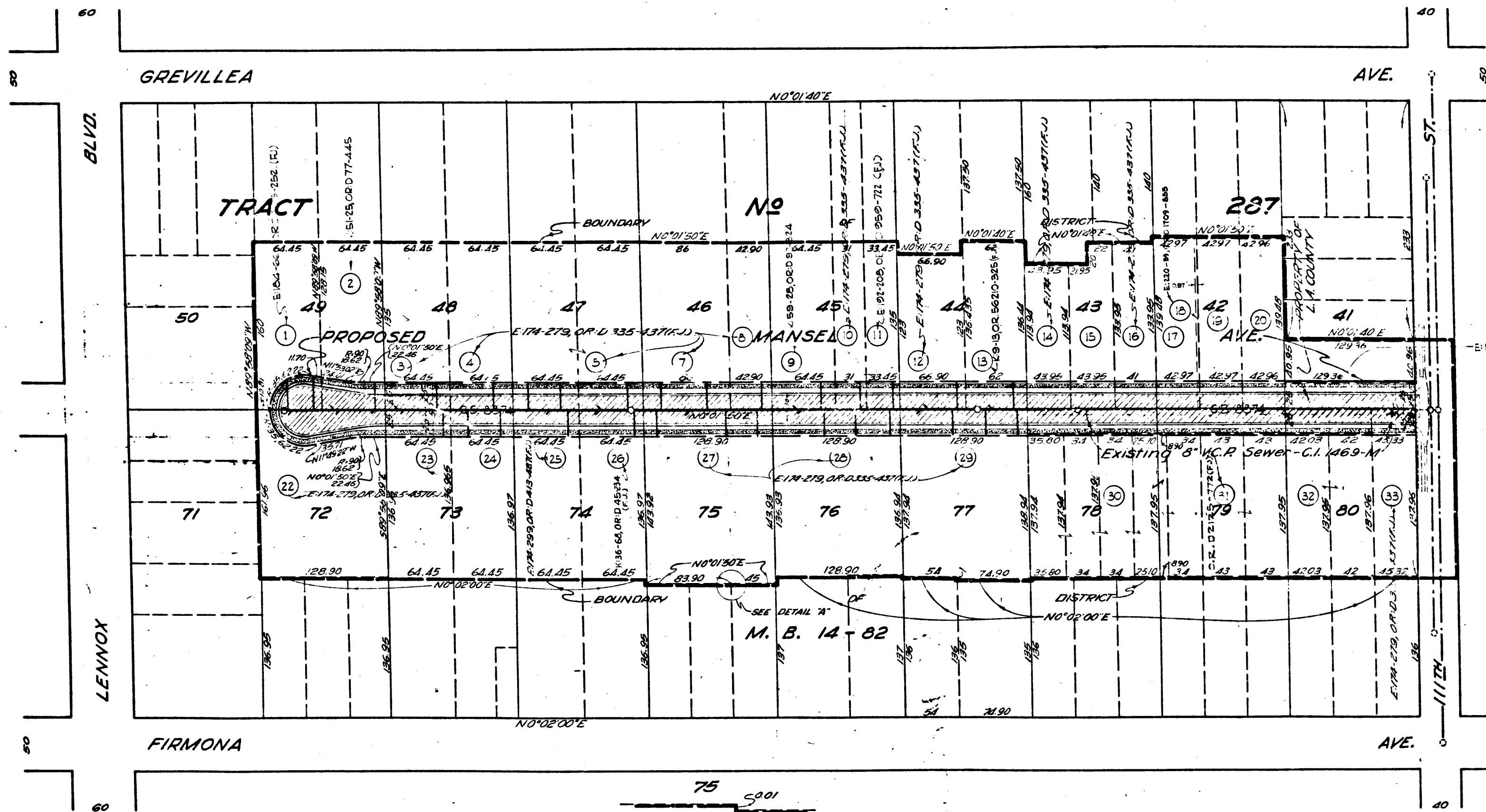


Superior Court Case No. 680339  
 Suit for Condemnation  
 Filed May 27, 1957  
 County of Los Angeles, Plaintiff  
 VS  
 Joseph Pozzuoli, et al, Defendants  
 FOR CURRENT STATUS  
 SEE INDIVIDUAL PARCELS

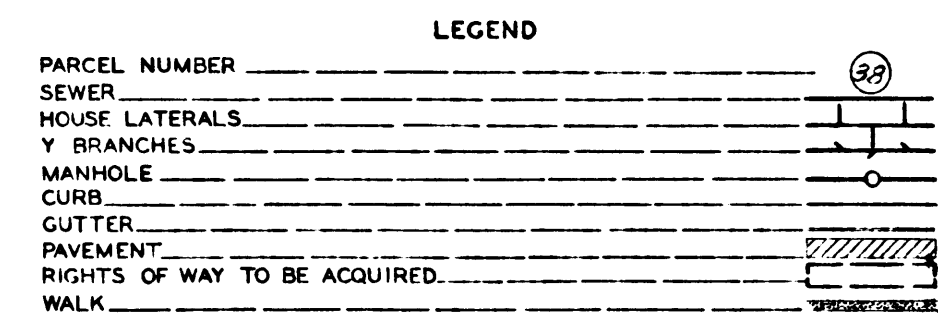


COUNTY IMPROVEMENT NO. 1817M  
 (MANSELE AVENUE)

DIAGRAM SHOWING THE RIGHTS OF WAY TO BE ACQUIRED, THE PROPOSED ROAD AND SEWER IMPROVEMENTS, THE EXTERIOR BOUNDARIES OF THE DISTRICT TO BE BENEFITED BY SAID ACQUISITION AND IMPROVEMENTS AND ASSESSED TO PAY THE COST AND EXPENSES THEREOF.

JOHN A. LAMBIE COUNTY OF LOS ANGELES, CALIFORNIA COUNTY ENGINEER

SUBMITTED *W. H. Kelle* DIVISION ENGINEER APPROVED *J. L. Dodson* CHIEF DEPUTY COUNTY ENGINEER



75 5001  
 DETAIL "A"  
 NO SCALE

CHECKED	ROBERTSON	DEC 1956
REVISED	W. CALAND	FEB 1955
DRAWN	DETWILER	APRIL 1954
INCHES 1/8-B, 3/16	1/4-M, 3/8-J	ANGLEWOOD
I.M. 24		

C.F. 2461