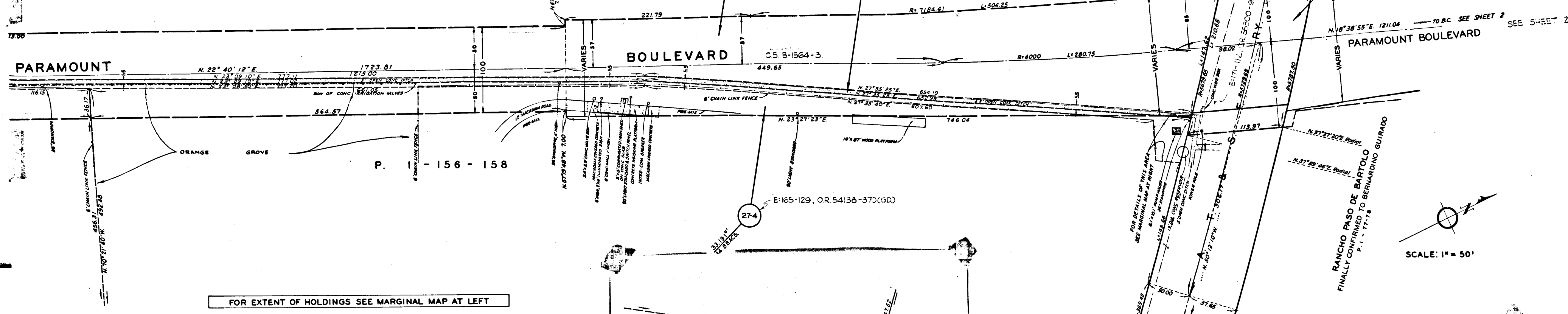


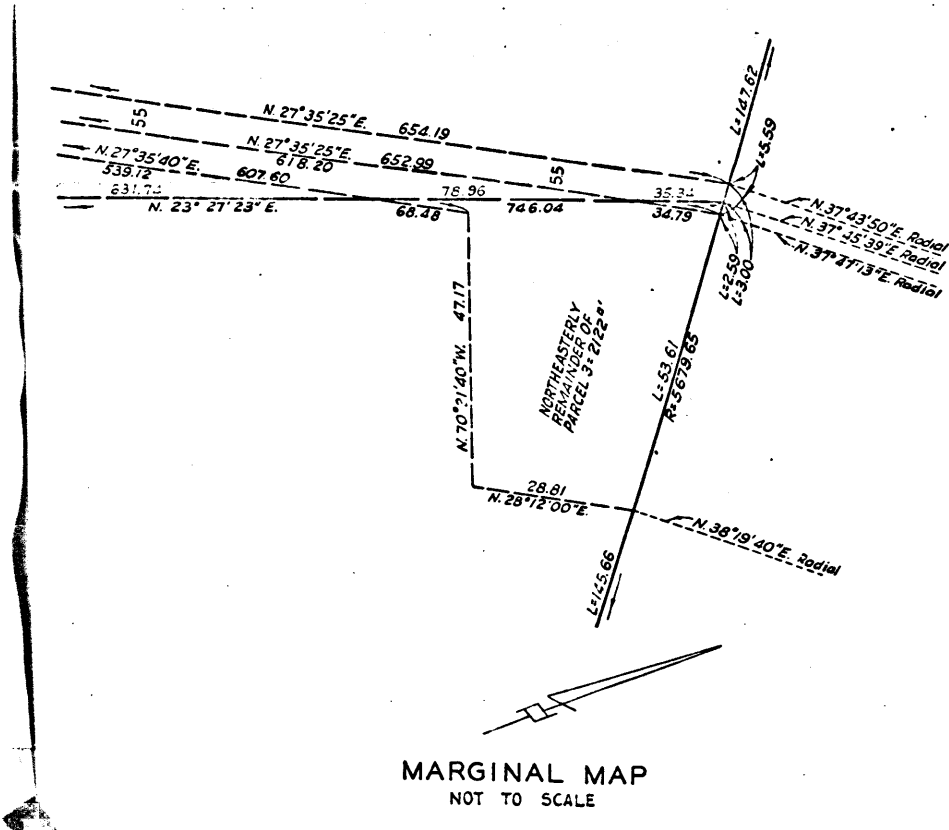
FOR EXTENT OF HOLDING SEE MARGINAL MAP AT LEFT

RANCHO SANTA GERTRUDES

FINALLY CONFIRMED TO JAMES P. MC FARLAND AND JOHN G. DOWNEY



FOR EXTENT OF HOLDINGS SEE MARGINAL MAP AT LEFT



MARGINAL MAP NOT TO SCALE

EXHIBIT "A"
MAP SHOWING PROPERTY SOUGHT TO BE ACQUIRED
FOR THE OPENING
AND WIDENING OF
PARAMOUNT BOULEVARD

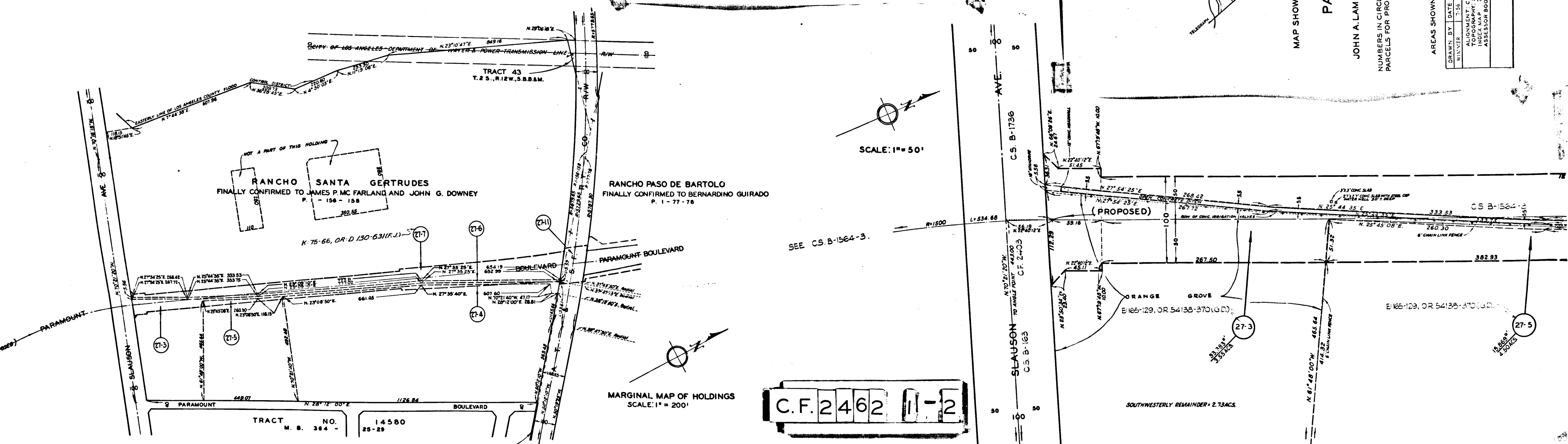
JOHN A. LAMBIE, COUNTY ENGINEER AUGUST, 1956
LEGEND
NUMBERS IN CIRCLES REPRESENT PARCELS SOUGHT TO BE ACQUIRED.
PARCELS FOR PROPOSED HIGHWAY EASEMENTS SHOWN IN RED.

DRAWN BY	CHECKED BY	DATE	CALCULATED BY	CHECKED BY	DATE
J. A. Lambie	J. A. Lambie	8/1/56	J. A. Lambie	J. A. Lambie	8/1/56

AREAS SHOWN THUS: 00000 = AREA OF PARCELS IN SQUARE FEET OR ACRES
00000 = AREA OF HOLDING IN SQUARE FEET OR ACRES

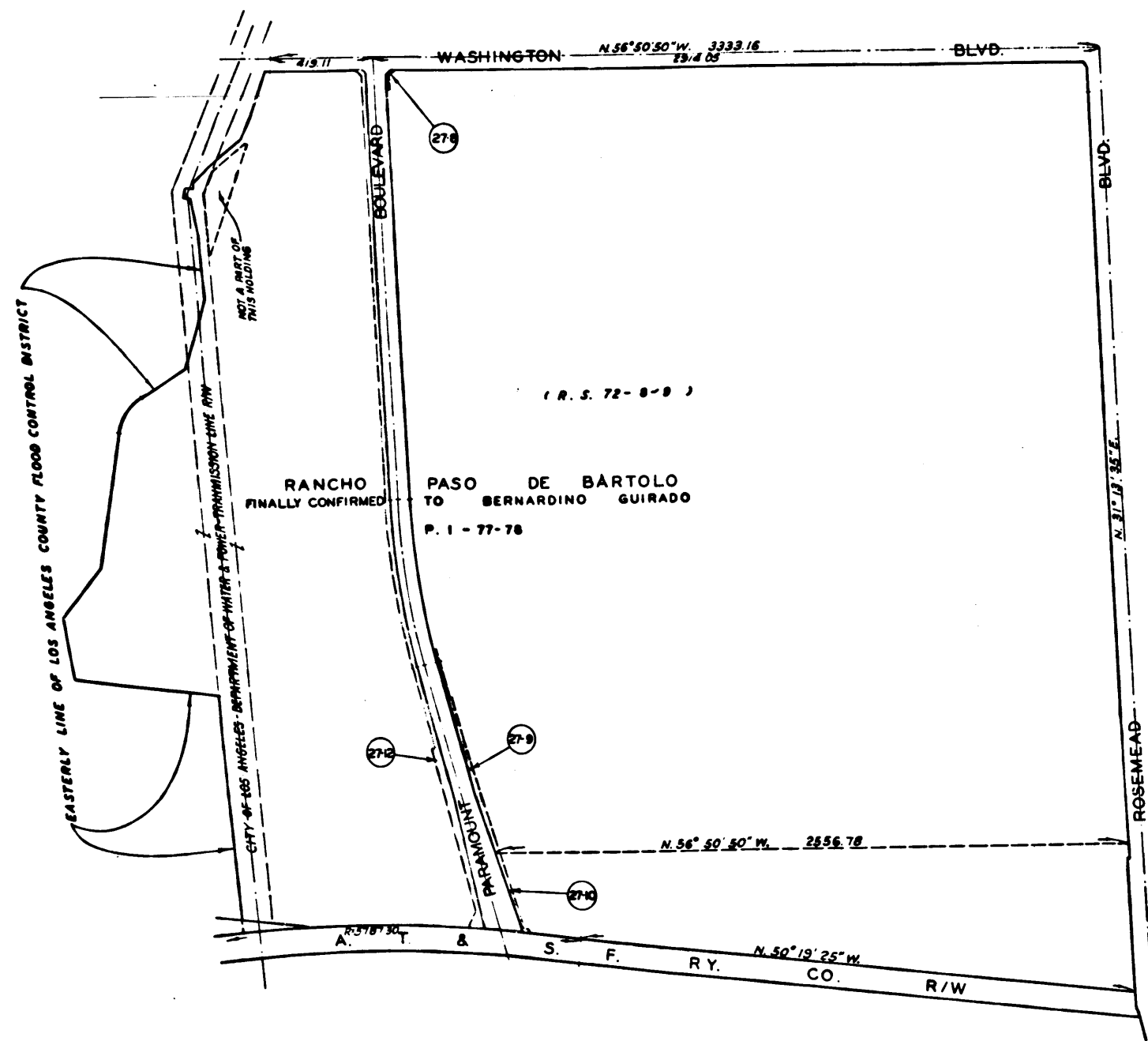
REVISIONS:
TOPOGRAPHY 2/22/56
ALTIMETER 2/22/56
ASSASSINATOR BOOK 3/2/56

JOB NO. 3312.8
PARAMOUNT BOULEVARD (27)
SHEET 1 OF 2 SHEETS

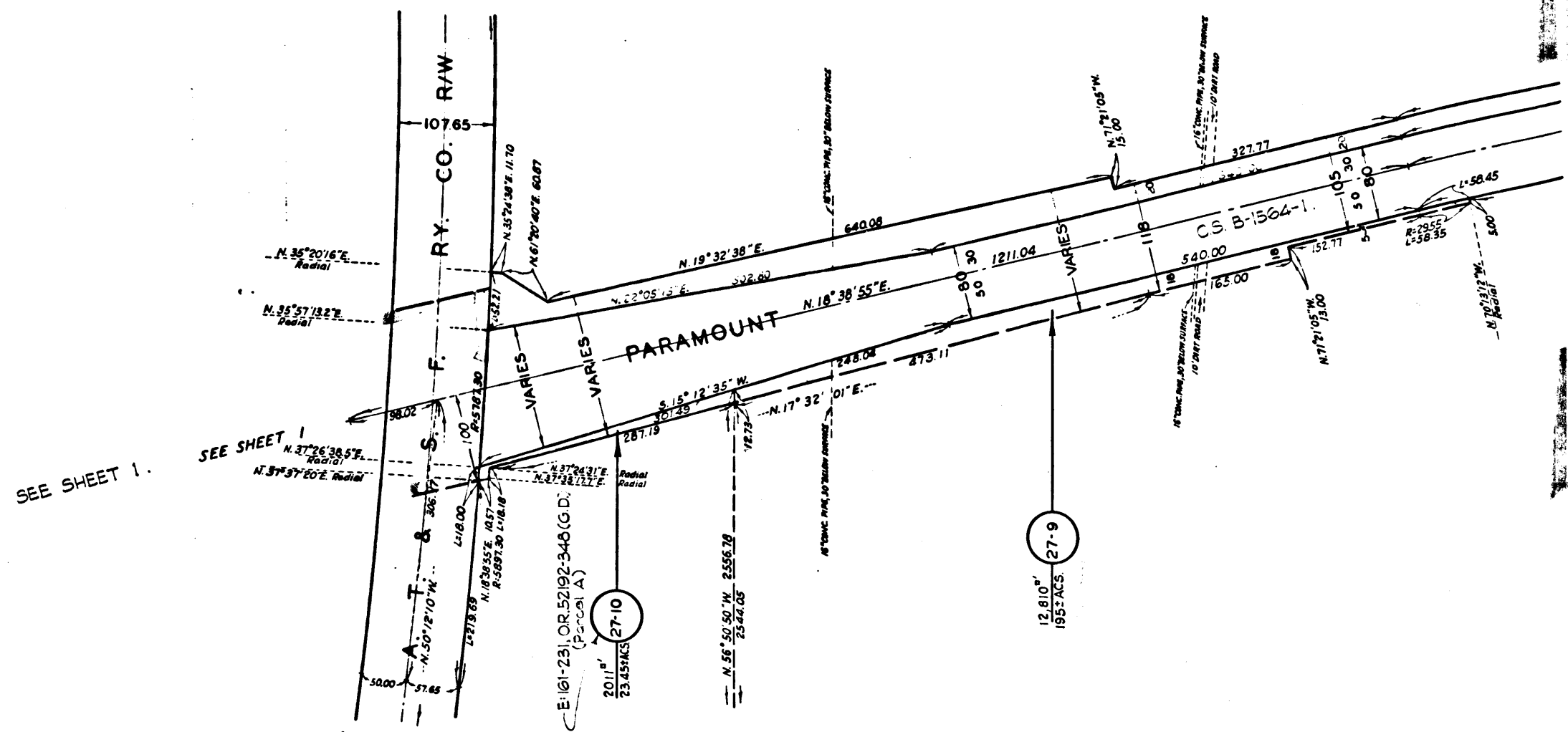


MARGINAL MAP OF HOLDINGS SCALE: 1" = 200'

C.F. 2462 1-2



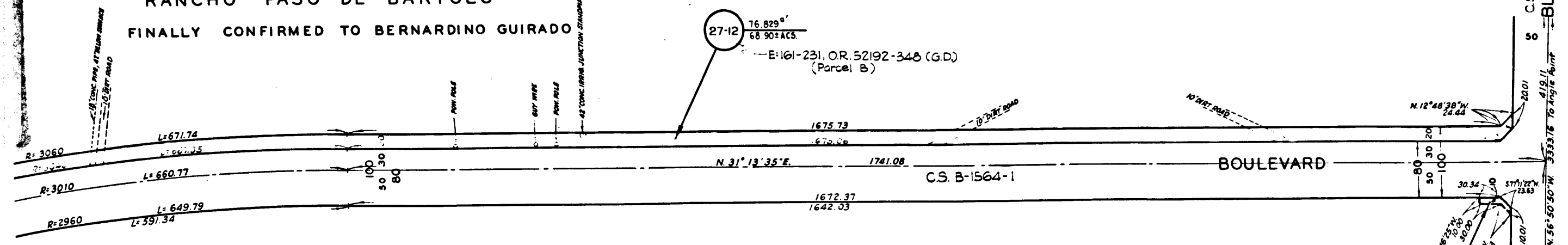
MARGINAL MAP OF HOLDINGS
SCALE: 1" = 400'



SCALE: 1" = 100'

FOR EXTENT OF HOLDING SEE MARGINAL MAP AT LEFT

RANCHO PASO DE BARTOLO
FINALLY CONFIRMED TO BERNARDINO GUIRADO



P. 1 - 77-78
(R. S. 72-8-9)

FOR EXTENT OF HOLDINGS SEE MARGINAL MAP AT LEFT

C.F. 2462 2-2

SCALE: 1" = 100'

SEE CS B-1564-2.

DRAWN BY	DATE	CHECKED BY	DATE	CALCULATED BY	DATE	CHECKED BY	DATE
WIMMER	8-56	THOMPSON	8-56	WIMMER	8-56	ANDERSON-THOMPSON	8-56

ALIGNMENT: CS B-1564-1 & 3
 TOPOGRAPHY: SD DEPT FB 278-116, 126-129
 INDEX MAP: 36 (C.D. 5)
 ASSESSOR BOOK: 392-5
 REVISIONS:
 JOB NO. 0912 18

PARAMOUNT BOULEVARD (27)
 SHEET 2 OF 2 SHEETS