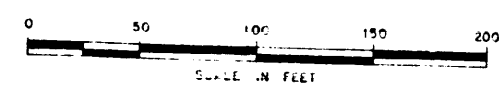
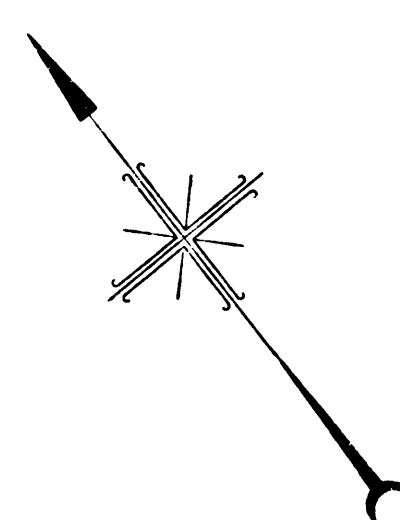


**MAP**  
 SHOWING CERTAIN REAL PROPERTIES IN AND UPON  
 WHICH EASEMENTS ARE TO BE CONDEMNED  
**FOR PUBLIC STREET PURPOSES**  
 FOR THE OPENING, WIDENING, EXTENDING, AND LAYING  
 OUT OF  
**PACIFIC AVENUE**  
 (VENICE DISTRICT)  
 BETWEEN  
**MILDRED AVENUE**  
 AND  
 THE COMMON CITY BOUNDARY OF THE CITY OF LOS ANGELES  
 AND THE CITY OF SANTA MONICA  
 IN THE CITY OF LOS ANGELES, CALIFORNIA  
 IN ACCORDANCE WITH ORDINANCE NO. 102,955  
 LLOYD ALDRICH CITY ENGINEER JUNE 1954



NOTES:  
 Real properties to be condemned for public street purposes shown  
 outlined in red.  
 Letters in circles indicate parcels as set forth in paragraph XII  
 of the complaint.

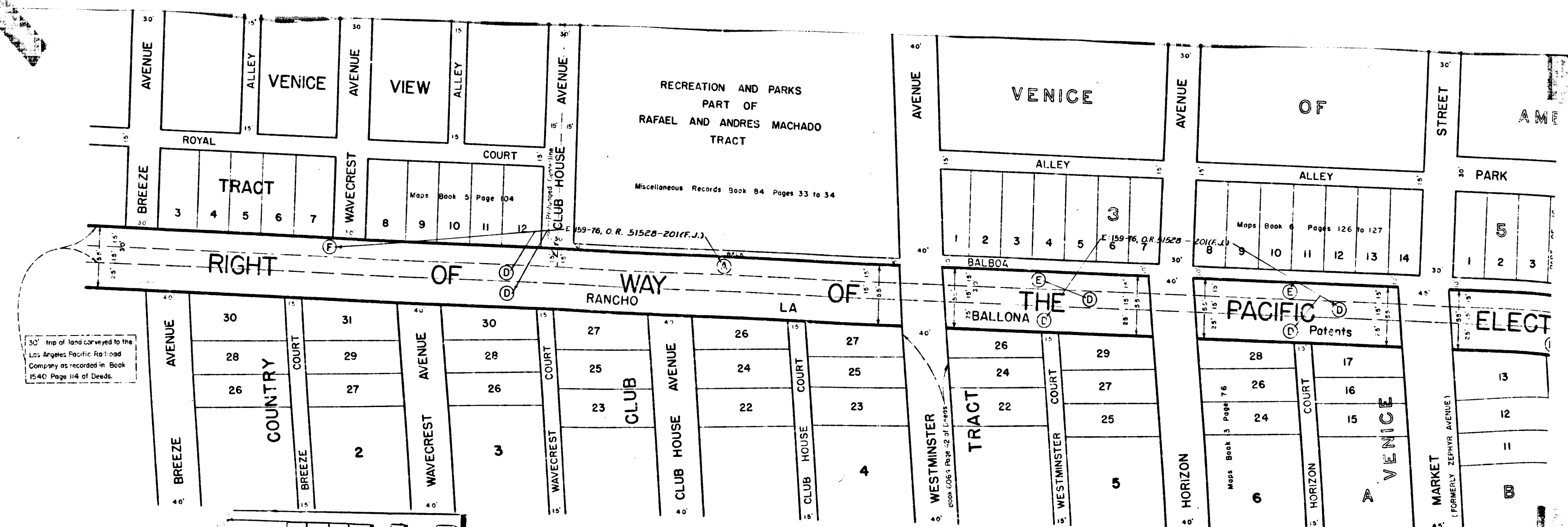
**SHEET 1 OF 2 SHEETS**

Title	VENICE BLVD. & PACIFIC AVE. I.D.
Order No.	A.C. 8304
Clerk's File	43223
Plans & Profiles	Field Book
Office Work	Supervised by [Signature]
Submitted	JUNE 23 1954
Approved	JUNE 23 1954

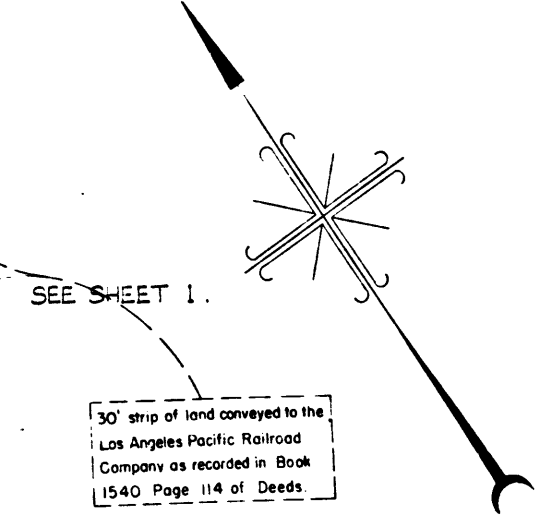
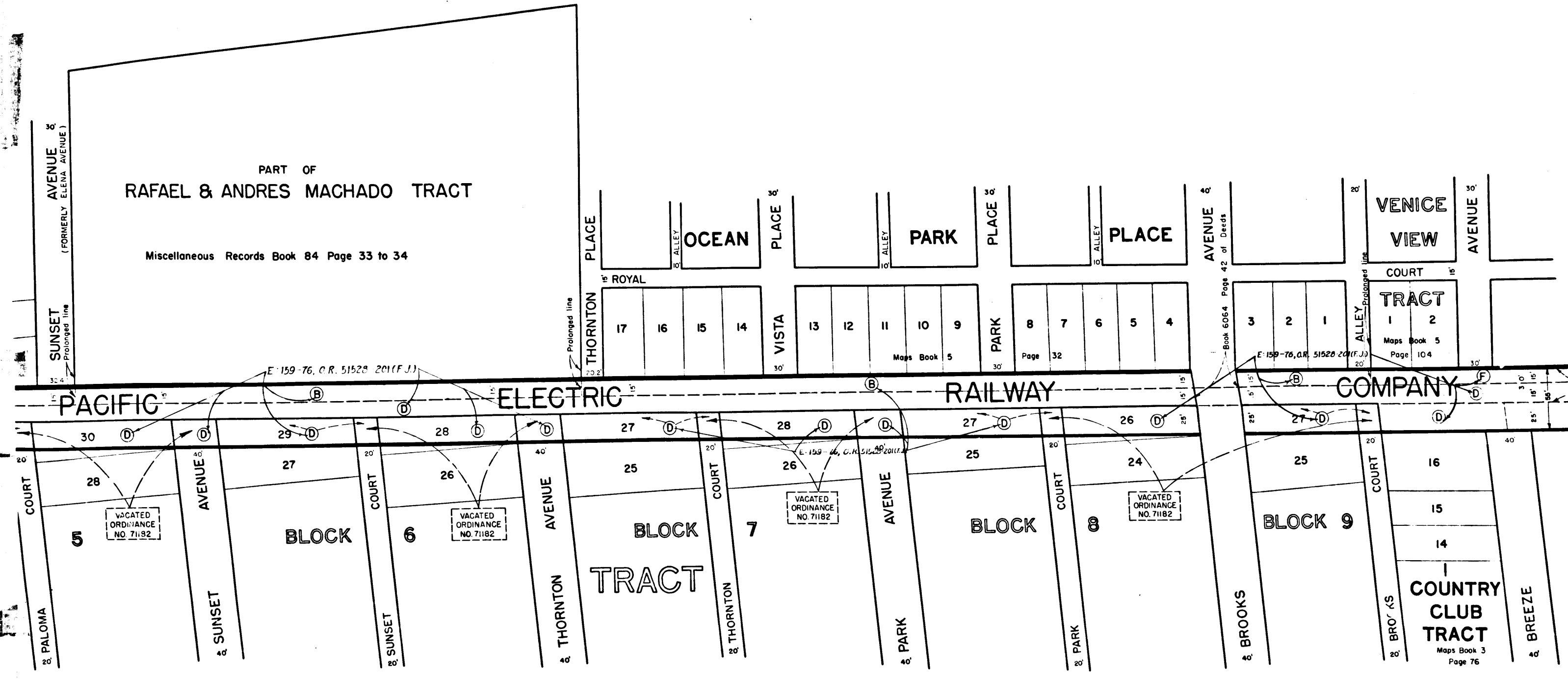
NEG 26-1. I.M. 23

A-9821

SEE SHEET 2.



C.F. 2463 1-2



SHEET 2 OF 2 SHEETS

Title	VENICE BLVD & PACIFIC AVE. LD
Order No.	A.C. 8304 Dist Maps 7, 8, 4, 7, 18, 7 Div. Index 1428
Clerk's File	43223 Council Dist. 10 Engr. Dist. VENICE
Plans & Profiles	Field Book
Office Work	Reviewed Ckd Supervised by <i>[Signature]</i>
Submitted	JUNE 23 <sup>rd</sup> 1954 Division Engr. <i>[Signature]</i>
Approved	JUNE 23 <sup>rd</sup> 1954 City Engr. <i>[Signature]</i>

A-9821

C.F. 2463 2-2

