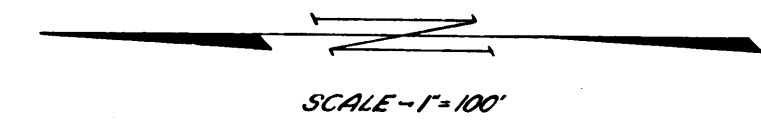
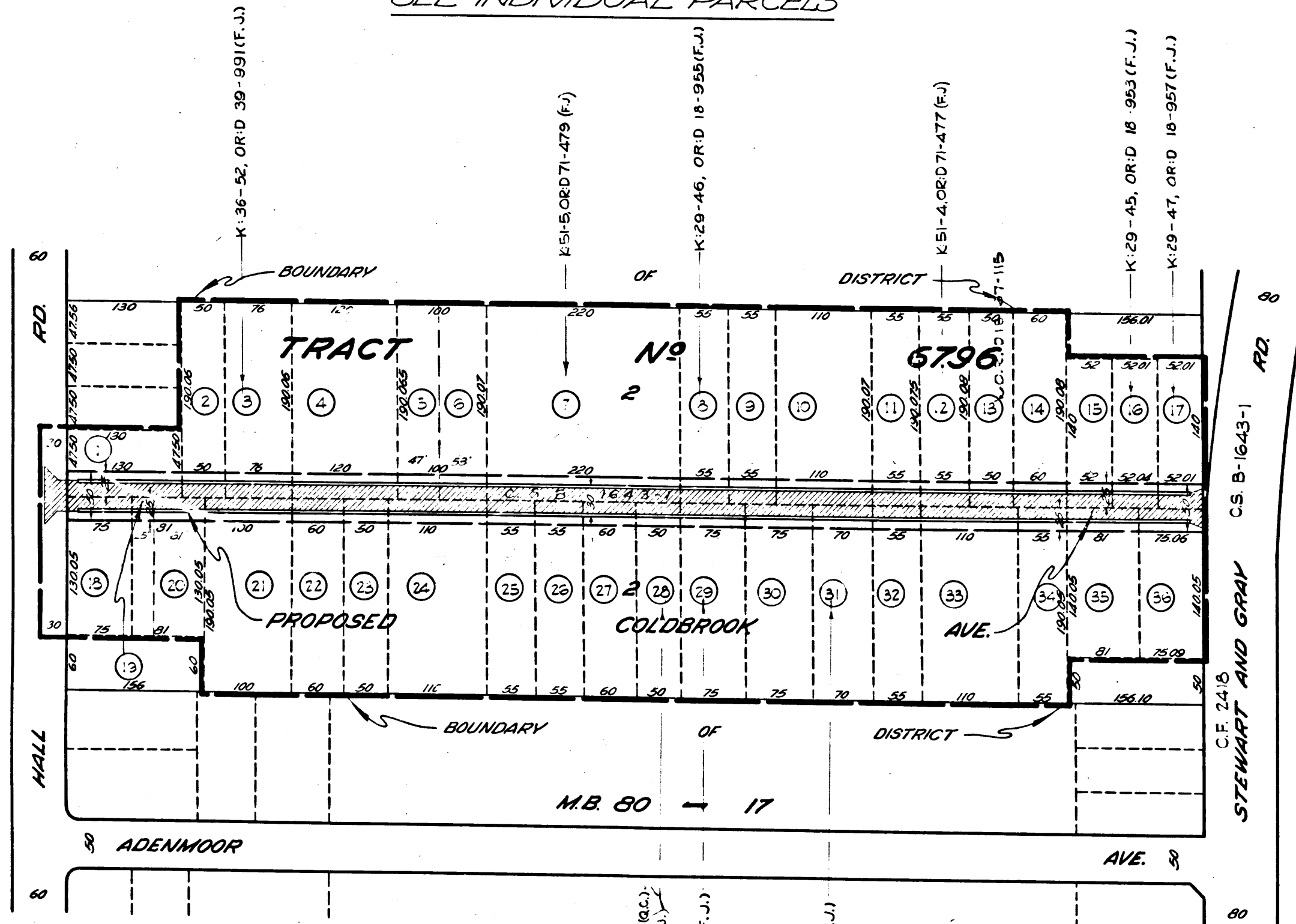


Superior Court Case No. 668886
 Suit for Condemnation
 Filed Oct. 30, 1956
 County of Los Angeles, Plaintiff
 VS
 August O. Ostlund, et al, Defts.
 FOR CURRENT STATUS
 SEE INDIVIDUAL PARCELS



COUNTY IMPROVEMENT NO. 1739 M
 (COLDBROOK AVENUE)

DIAGRAM SHOWING THE RIGHTS OF WAY TO BE ACQUIRED, THE PROPOSED ROAD IMPROVEMENT, THE EXTERIOR BOUNDARIES OF THE DISTRICT TO BE BENEFITED BY SAID ACQUISITION AND IMPROVEMENT AND ASSESSED TO PAY THE COST AND EXPENSES THEREOF.

COUNTY OF LOS ANGELES, CALIFORNIA
 JOHN A. LAMBIE COUNTY ENGINEER

SUBMITTED *W. H. Kelle* DIVISION ENGINEER APPROVED *F. S. Doss* CHIEF DEPUTY COUNTY ENGINEER

LEGEND

PARCEL NUMBER	(34)
CURB	_____
GUTTER	_____
PAVEMENT	_____
RIGHTS OF WAY TO BE ACQUIRED	_____

CHECKED	ROBERTSON	JULY, 1956
DRAWN	HEIM	FEB., 1956
INDEX	AMB	DOWNEY

C.F. 2468