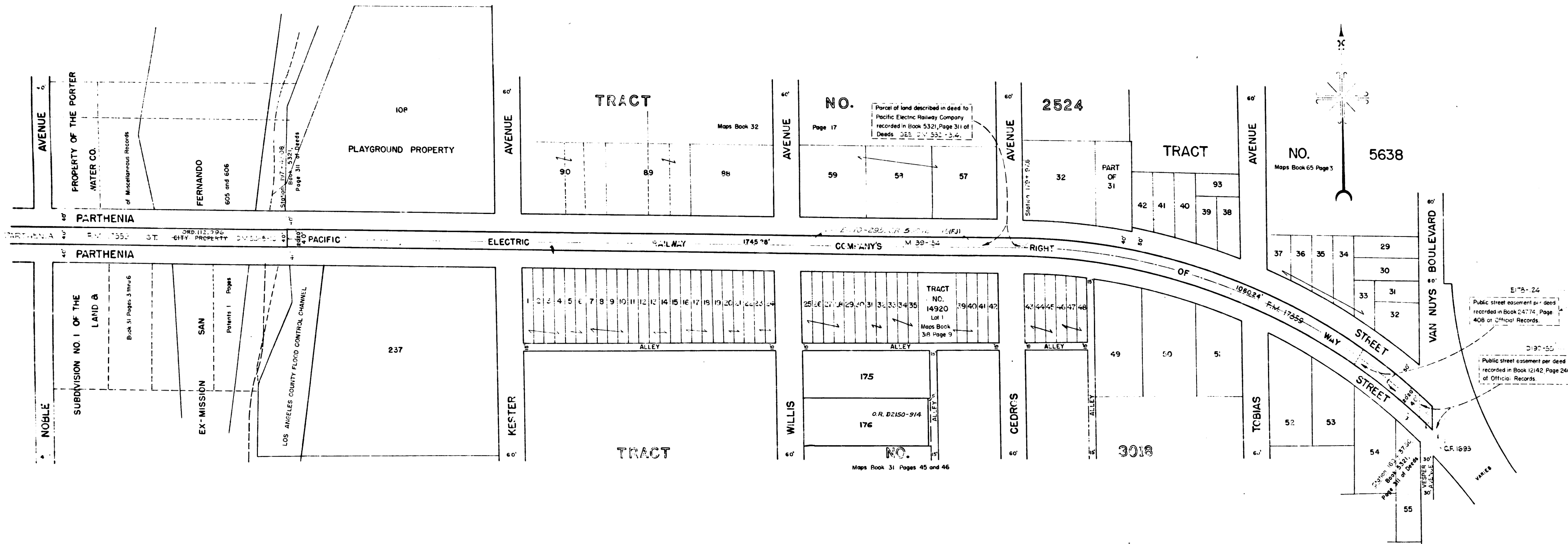
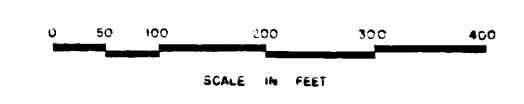


Superior Court Case No. 621446
 Suit for Condemnation
 Filed Nov. 19, 1953
 City of Los Angeles, Plaintiff
 vs.
 Cara A. Altman, et al, Defendants



MAP
 SHOWING CERTAIN REAL PROPERTY
 TO BE CONDEMNED IN FEE
 FOR PUBLIC STREET PURPOSES
 FOR THE WIDENING AND LAYING OUT OF
 PARTHENIA STREET
 BETWEEN VAN NUYS BOULEVARD AND
 APPROXIMATELY 550 FEET WESTERLY OF
 KESTER AVENUE
 IN THE CITY OF LOS ANGELES, CALIFORNIA
 IN ACCORDANCE WITH ORDINANCE NO. 98256
 LLOYD ALDRICH, CITY ENGINEER
 OCTOBER 1953



NOTE
 Land to be condemned for public street purposes
 shown outlined in red.

The PART OF PARTHENIA STREET, VAN NUYS BOULEVARD, TO 550 FEET WEST OF KESTER AVENUE, Right of Way No. 25176
 Order No. 16-42 (Dist. Map 760-754) E.L. Index 588, 599
 Clerk's File 48218 Council List 1 Eng. List VALLEY
 Plans & Profiles Field Book
 Office work supervised by
 Submitted Oct. 27, 1953 Division Eng. J.B. [Signature]
 Approved Oct. 27, 1953 City Engineer LLOYD ALDRICH

A-9523

C.F. 2469