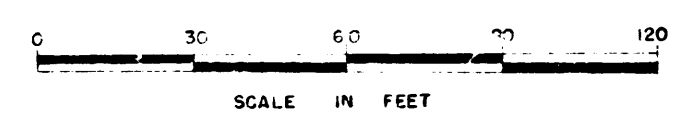
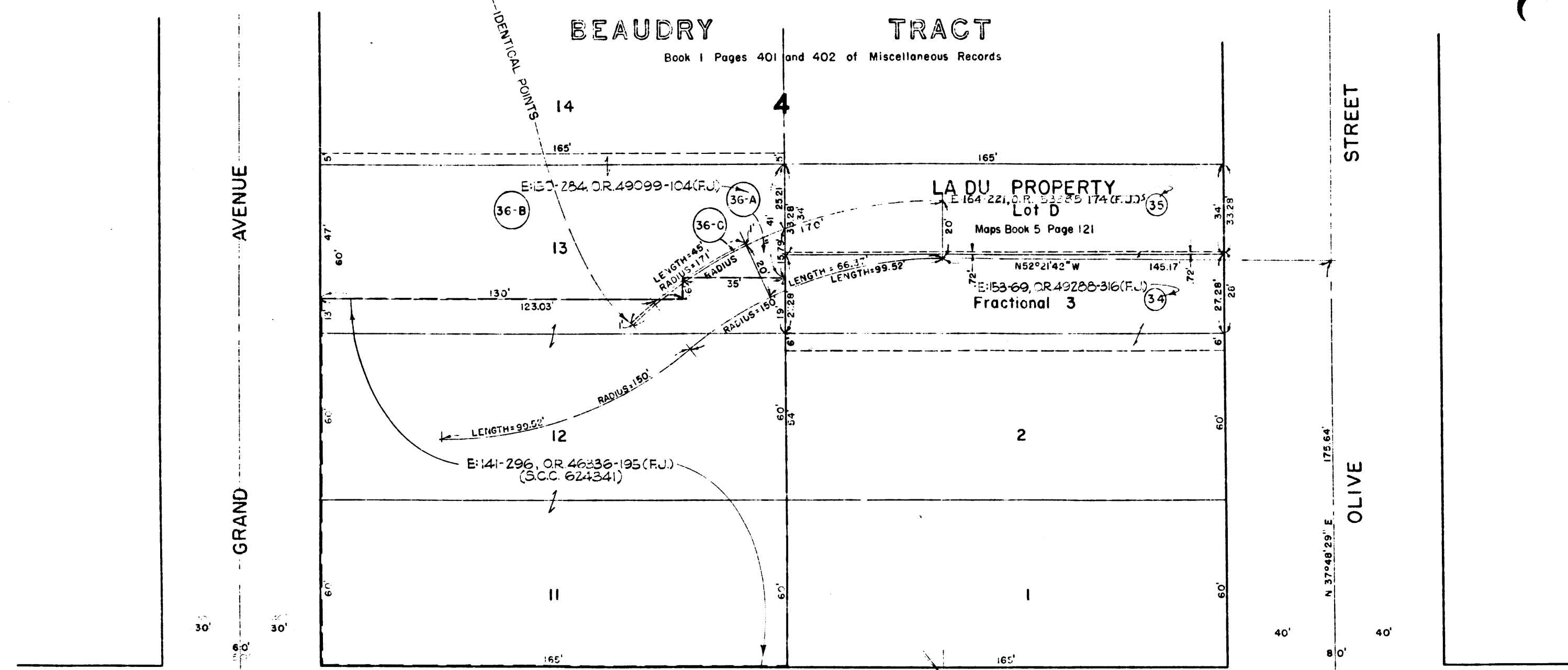
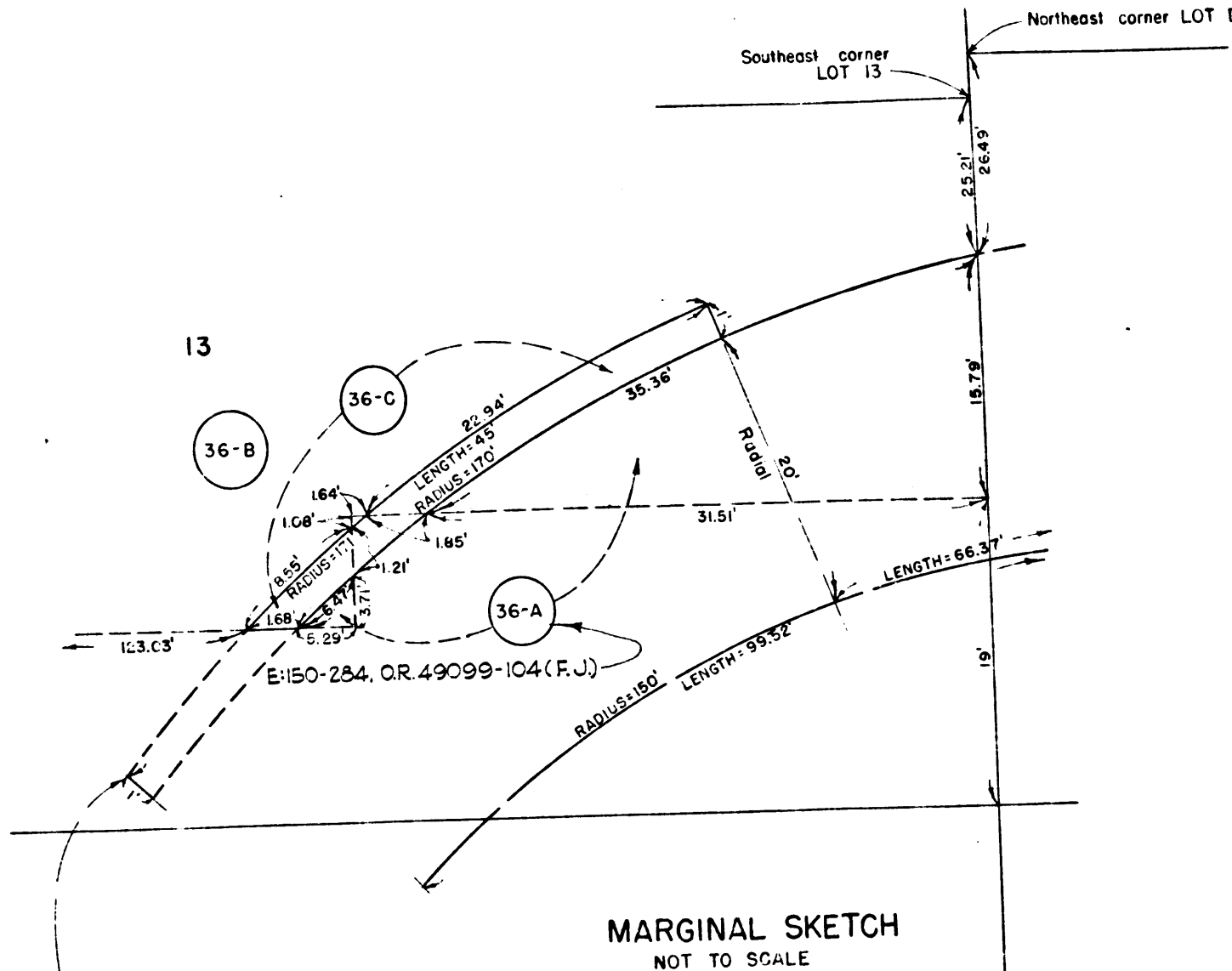


Superior Court Case No. 641929
 Suit for Condemnation.
 Filed March 24, 1955
 L.A. County Flood Control Dist, Plff.
 VS
 Agnes O. Stark, et al, Defendants
FOR CURRENT STATUS
SEE INDIVIDUAL PARCELS

MAP
 SHOWING CERTAIN REAL PROPERTIES
 WHICH ARE TO BE CONDEMNED IN FEE
 ALSO
 SHOWING CERTAIN REAL PROPERTIES IN AND UPON
 WHICH EASEMENTS ARE TO BE CONDEMNED
ALL FOR PUBLIC STREET PURPOSES
 IN CONNECTION WITH THE OPENING OF A
 NEW STREET TO BE KNOWN AS
THIRD PLACE
 LOCATED APPROXIMATELY 120 FEET NORTHEASTERLY OF
FOURTH STREET
 AND EXTENDING FROM
OLIVE STREET
 TO
GRAND AVENUE
 ALL IN THE CITY OF LOS ANGELES, CALIFORNIA
 IN ACCORDANCE WITH ORDINANCE NO. 104,394
 LLOYD ALDRICH CITY ENGINEER DECEMBER, 1954



NOTES:
 Real properties to be condemned in fee shown outlined in red.
 Real properties in and upon which easements are to be condemned shown colored green.
 Real properties which are to ascertain damages, if any, shown outlined in yellow.
 Dashed lines and figures indicate property holdings which differ from recorded subdivisions.
 Figures and letters in circles indicate parcels as set forth in the complaint.

Title: <u>3RD PLACE BETWEEN OLIVE ST. AND GRAND AVE.</u>	
Order No. <u>61391</u>	Right of Way No. <u>22987</u>
Clerk's File <u>53401</u>	Dist. Map <u>129 B 209</u> Div. Index <u>95-96</u>
Plans & Profiles <u>P-16010</u>	Engr. Dist. <u>CENTRAL</u>
Office Work <u>Submitted</u>	Field Book <u>16410</u>
Submitted <u>DECEMBER 15th</u> 1954	Supervised by <u>[Signature]</u>
Approved <u>DECEMBER 15th</u> 1954	City Engr. <u>[Signature]</u>

C.F. 2475-