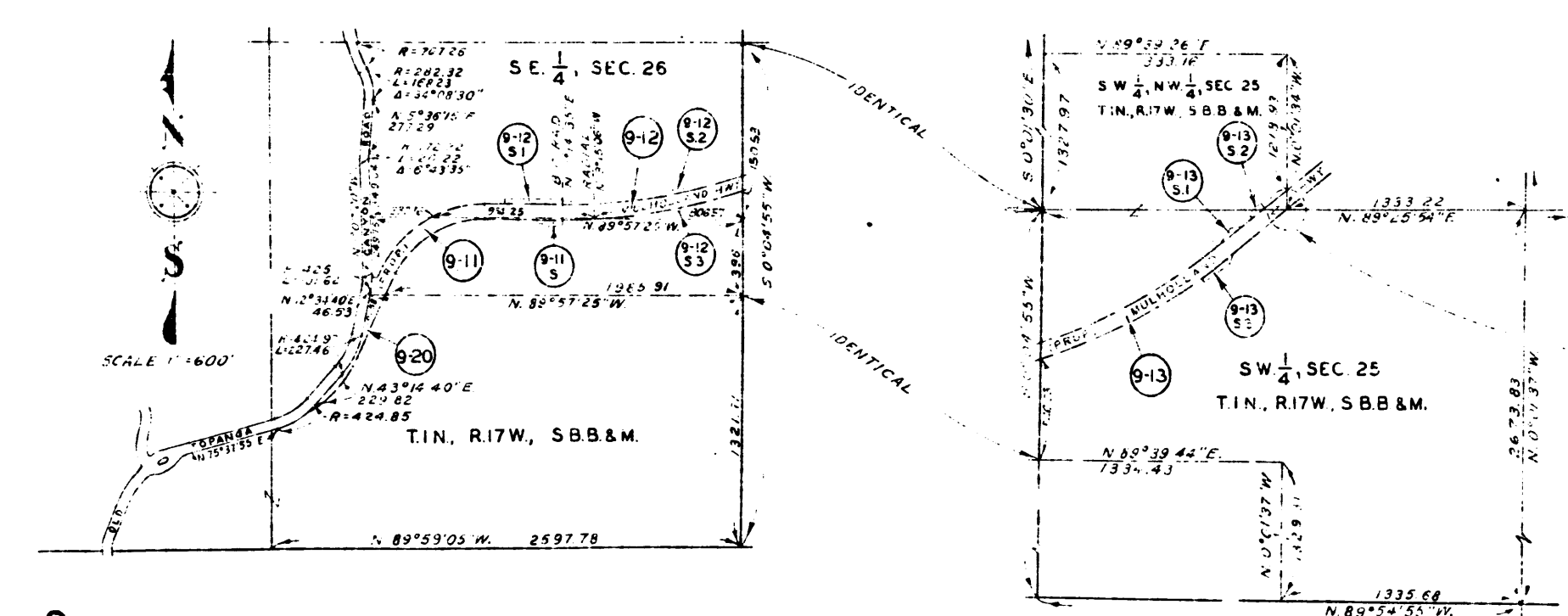


FOR EXTENT OF HOLDINGS SEE MARGINAL MAP ABOVE RIGHT



MARGINAL MAP OF HOLDINGS FOR PARCELS:  
9-10, 9-11, 9-12, 9-13

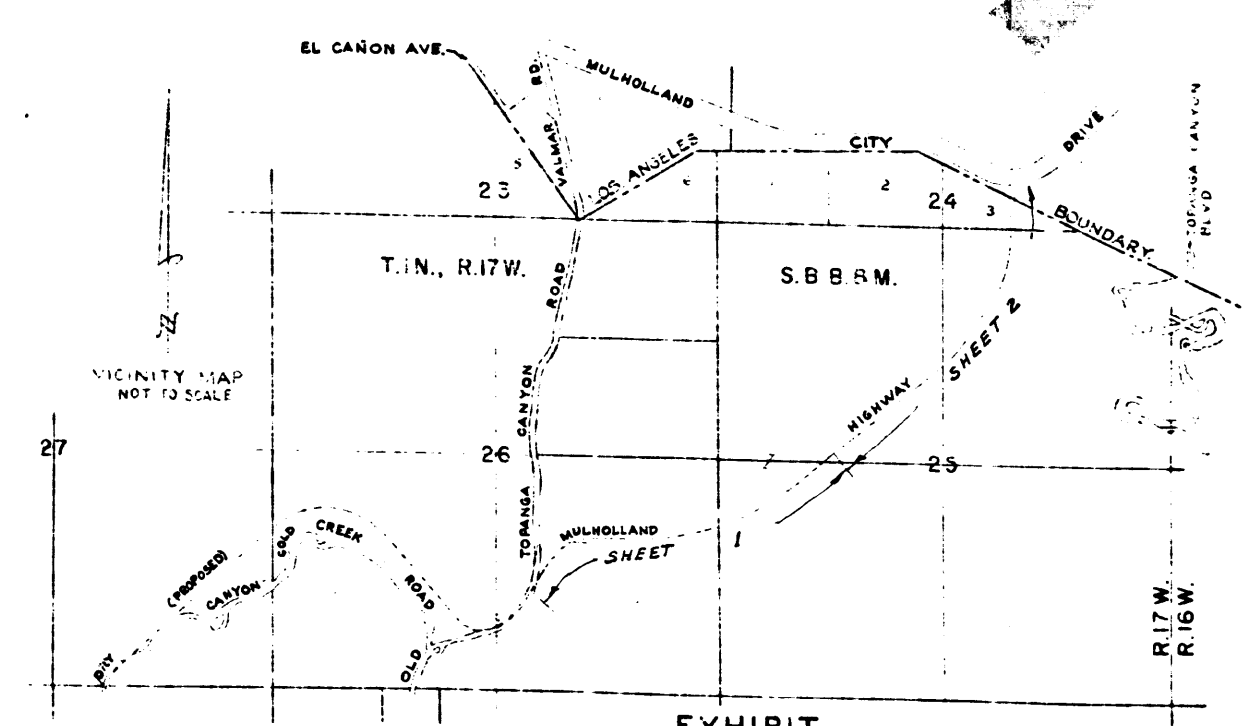
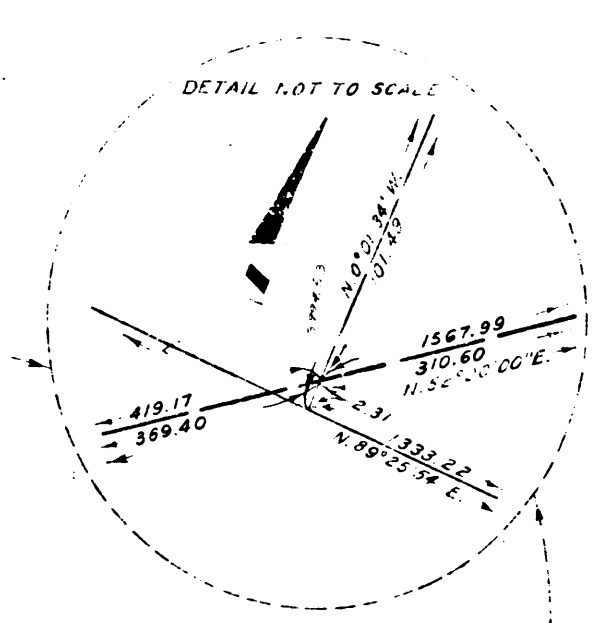


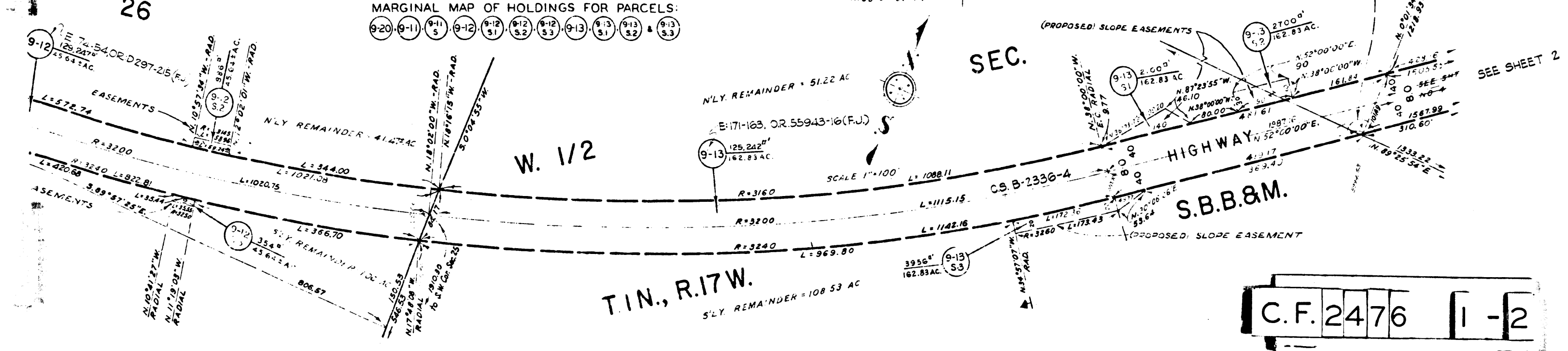
EXHIBIT  
MAP SHOWING PROPERTY SOUGHT TO BE ACQUIRED  
FOR THE OPENING  
OF  
MULHOLLAND HIGHWAY

JOHN A. LAMBIE, COUNTY ENGINEER NOVEMBER 1955  
LEGEND

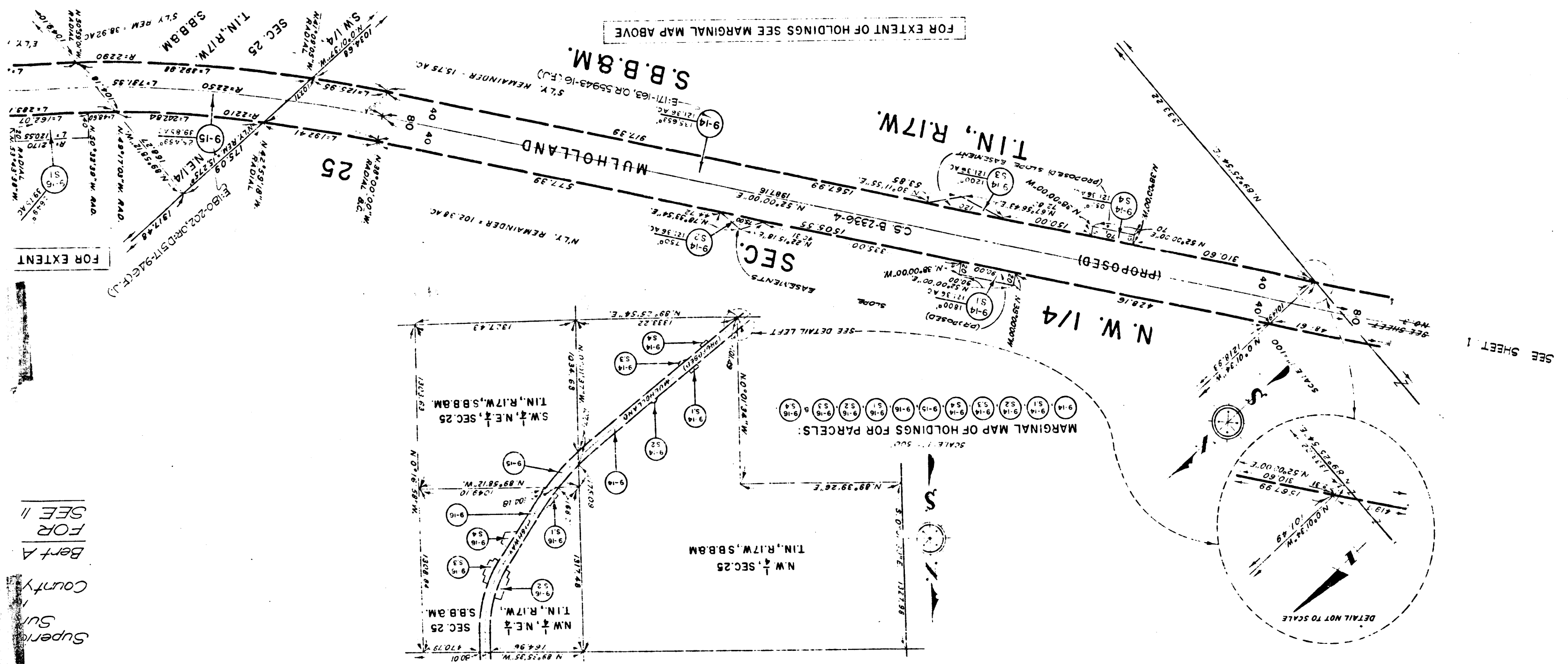
NUMBERS IN CIRCLES REPRESENT PARCELS SOUGHT TO BE ACQUIRED.  
PARCELS FOR PROPOSED HIGHWAY EASEMENTS SHOWN IN RED.  
PARCELS FOR PROPOSED SLOPE EASEMENTS SHOWN IN YELLOW.

AREAS SHOWN THIS: 0000 = AREA OF PARCEL IN SQUARE FEET  
00000 = AREA OF HOLDING IN SQUARE FEET OR ACRES

DRAWN BY	DATE	CHECKED BY	DATE	CALCULATED BY	DATE	CHECKED BY	DATE
RUSH & THOMPSON	8-55	FARMER	8-55	V.M. & R.F.	3-55	THOMPSON	3-55
ALIGNMENT CS B-2336-3 & 4 REVISIONS: Revised to match a 1-55 W.R.							
TOPOGRAPHY J.F. SMITH							
INDEX MAP 40-52							
ASSESSOR BOOK 854							
JOB NO. 0902.10							
MULHOLLAND HIGHWAY (3) ADDITIONAL							
SHEET 1 OF 2 SHEETS							

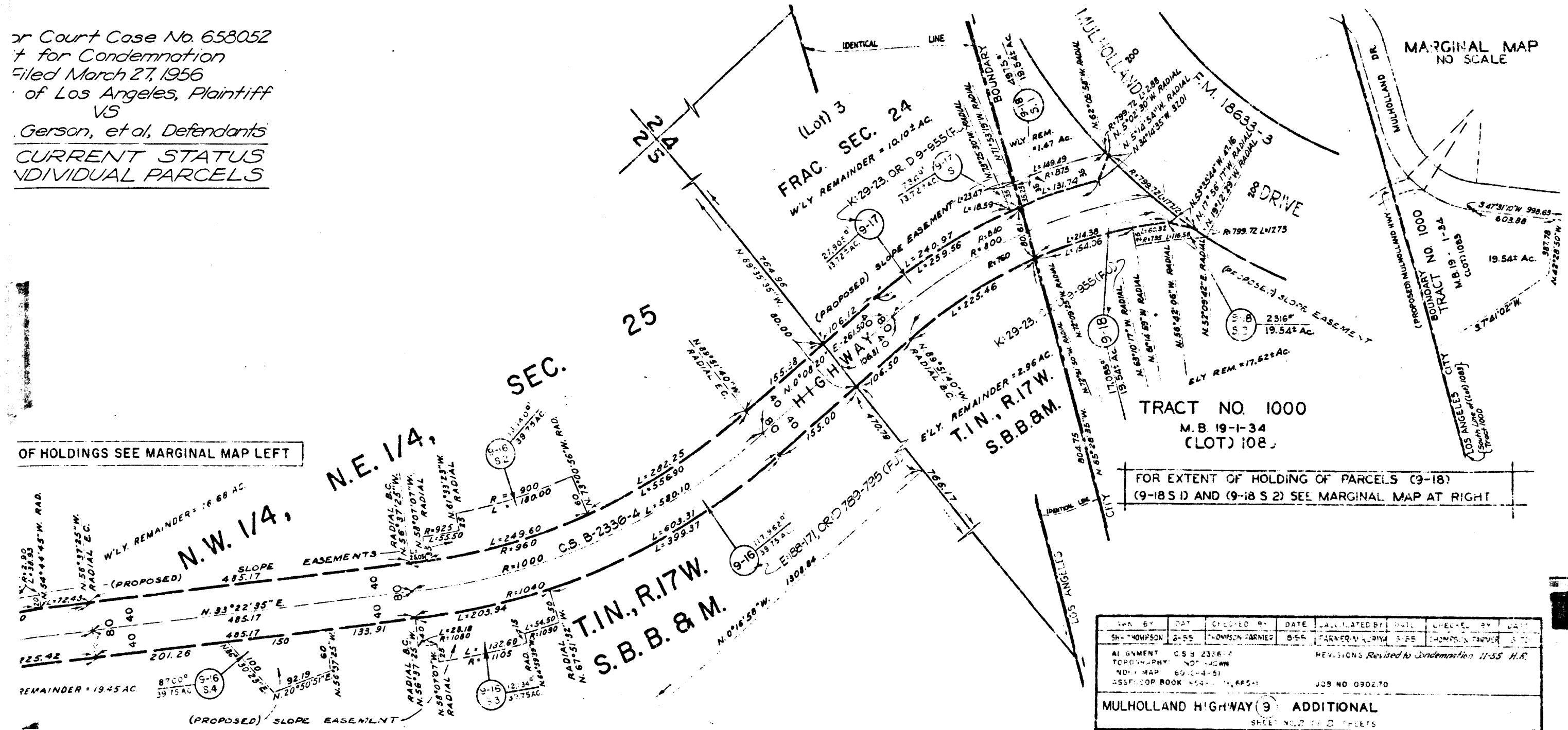


C.F. 2476 1-2



Superior  
County  
Bert A  
FOR  
SEE II

or Court Case No. 658052  
for Condemnation  
Filed March 27, 1956  
of Los Angeles, Plaintiff  
VS  
Gerson, et al, Defendants  
CURRENT STATUS  
INDIVIDUAL PARCELS



DATE	BY	REVISION	DESCRIPTION
1955	SH. THOMPSON	1	PREPARED FOR CONDEMNATION
1956	THOMPSON	2	REVISIONS REVISED FOR CONDEMNATION

MULHOLLAND HIGHWAY (9) ADDITIONAL  
SHEET NO. 112 OF 115

C.F. 2476 2-2