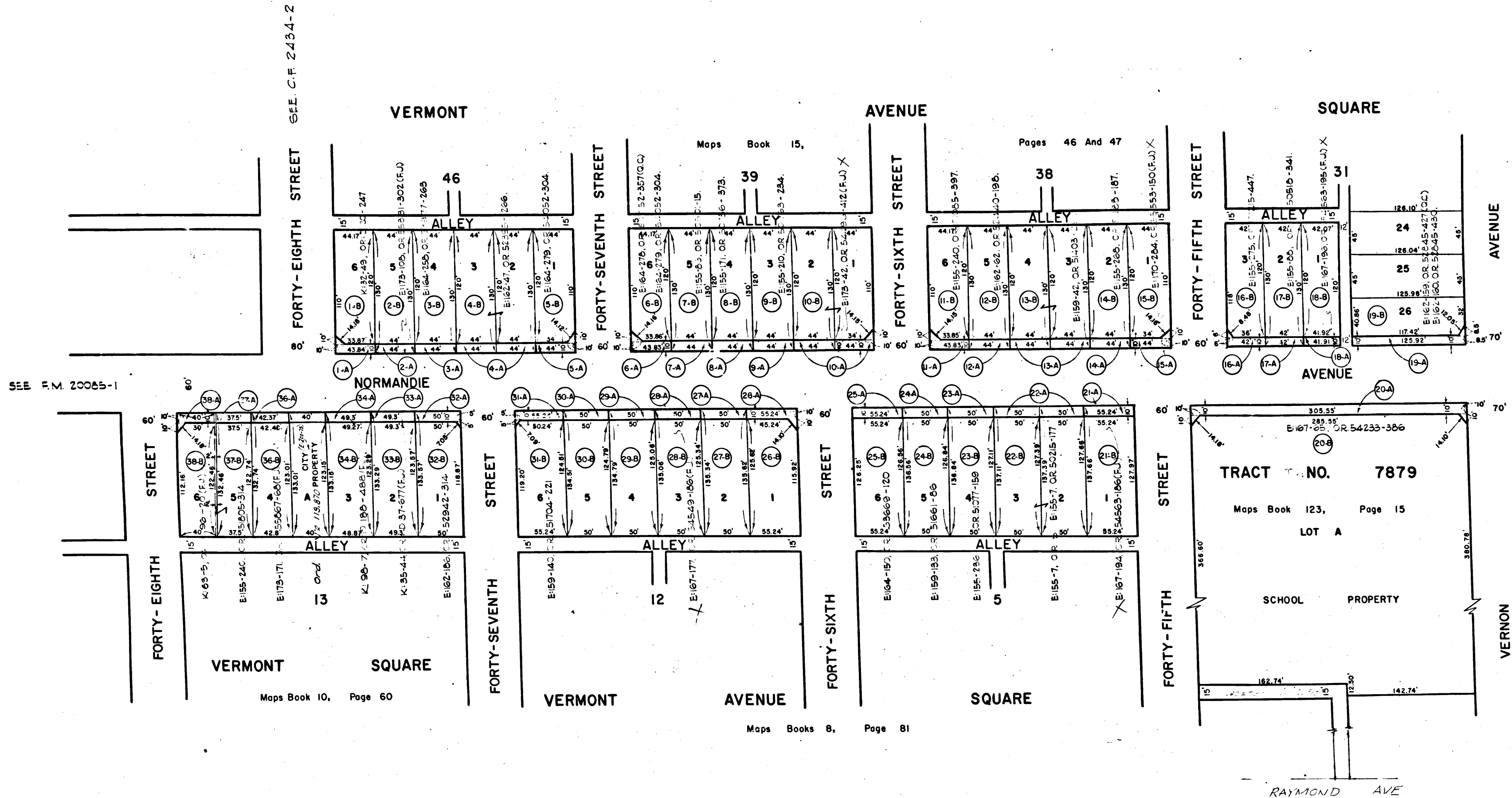
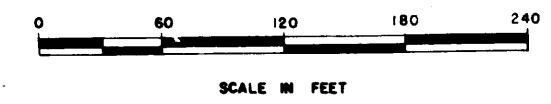


Superior Court Case No. 673950
 Suit for Condemnation
 Filed Feb. 11, 1957
 City of Los Angeles, Plaintiff
 VS
 John Appel, et al, Defendants
 SEE INDIVIDUAL PARCELS FOR
 FINAL JUDGMENTS AND DEEDS



MAP
 SHOWING REAL PROPERTIES
 TO BE CONDEMNED, IN FEE SIMPLE,
 FOR PUBLIC STREET PURPOSES
 FOR THE WIDENING OF
 NORMANDIE AVENUE
 BETWEEN
 VERNON AVENUE
 AND
 FORTY-EIGHTH STREET
 IN THE CITY OF LOS ANGELES, CALIFORNIA
 IN ACCORDANCE WITH ORDINANCE NO. 108,390
 LYALL A. PARDEE CITY ENGINEER NOVEMBER 1956



- NOTES:
1. Property to be condemned for public street purposes shown outlined in red.
 2. Property to which it is proposed to ascertain damages, if any, shown outlined in yellow.
 3. Figures and letters in circles indicate parcels as set forth in the complaint.
 4. Dotted lines and dimensions indicate holdings in those cases where they differ from recorded subdivisions.

Title NORMANDIE AVENUE - VERNON AVENUE TO
 FORTY-EIGHTH STREET Right of Way No. 23052
 Order No. 81378 Dist. Map 473B, 476L Div. Index 195, 196
 Clerk's File 59514 Council Dist. 7, 8 Engr. Dist. CENTRAL
 Plans & Profiles 2-18558 Field Book
 Office Work MC MULLIN, Ckd. E.M.C. Supervised by H. P. ...
 Submitted NOVEMBER 22 1956 Division Engr. ...
 Approved NOVEMBER 22 1956 City Engr. ...

I.M. 24

C.F. 2477 -