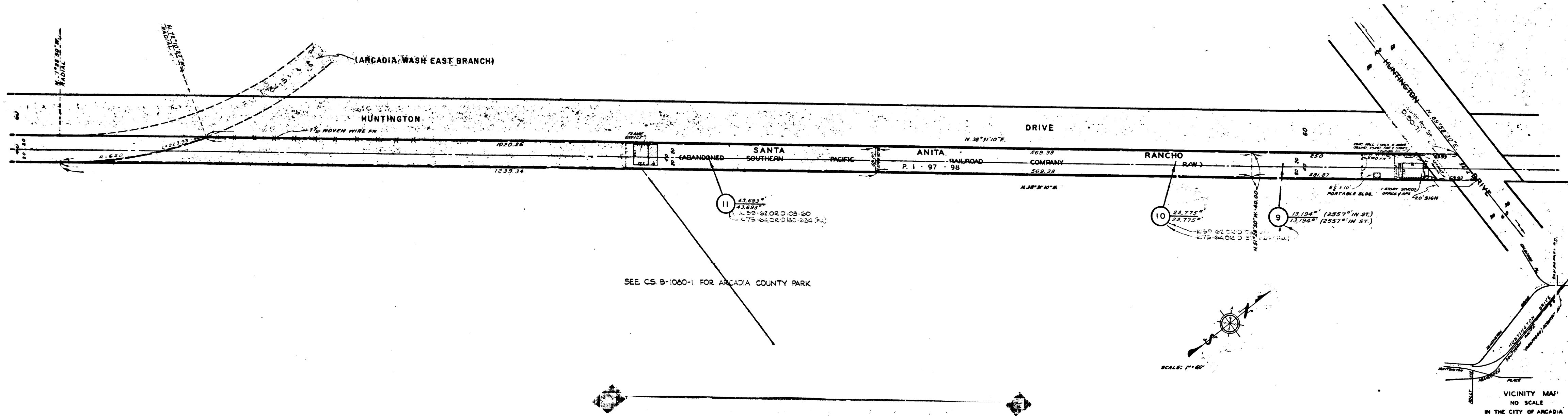


Superior Court Case No. 671409
 Suit for Condemnation
 Filed Dec. 19, 1956
 County of Los Angeles, Plaintiff
 vs
 C.P. Cassady Inc., et al. Defts
SEE INDIVIDUAL PARCELS FOR
FINAL JUDGMENTS AND DEEDS



SEE CS. B-1060-1 FOR ARCADIA COUNTY PARK



VICINITY MAP
 NO SCALE
 IN THE CITY OF ARCADIA

MAP SHOWING PROPERTY TO BE ACQUIRED FOR

PUBLIC PURPOSES

JOHN A. LAMBIE COUNTY ENGINEER
 AUGUST 1956

LEGEND

NUMBERS IN CIRCLES REPRESENT PARCELS SOUGHT TO BE ACQUIRED
 RED BORDER DENOTES BOUNDARY OF PROPERTY SOUGHT TO BE ACQUIRED FOR PUBLIC PURPOSES

AREAS OF PARCELS SOUGHT TO BE ACQUIRED SHOWN
 THUS: 0000' AREA OF HOLDING, 1 SQUARE FEET.

DRAWN BY	DATE	CHECKED BY	DATE	CHECKED BY	DATE
S. RUSH	8-26	K. ANDERSEN	8-26	S. RUSH	8-26
REFERENCES					
ALIGNMENT: C.S.B. 1060-1					
TOPOGRAPHY: APPRAISER'S SKETCH					
J.N. 0054.00					
INDEX MAP 45(B-5) ARCADIA COUNTY PARK ADDITION PARCELS SHEET 6(6)10					

1 M. 45

C.F. 2478 -